

A volunteer enterprise entirely supported by advertising.
PLEASE SUPPORT OUR ADVERTISERS.



The ELMSWELL **Newsletter**

At the heart of your community - bringing people together
DECEMBER 2000

Sports clubs will ignore 'quit' notice

Protest
 march
 against
 takeover
 move

ELMSWELL sports clubs are to ignore a Suffolk County Council notice to quit their playing fields by the end of March.

This was decided at a public meeting attended by about 200 residents and yesterday a 150-strong protest march demonstrated opposition to the council's



The Elmswell playing field protest march in the village yesterday.

*Could
 history
 repeat
 itself?*

*(East Anglian
 Daily Times
 18th October
 1982)*

"We have decided to ignore the notice 'terminating use of the land on March 31'."

The public meeting attended by Barry St Edmonds MP, Mr J. Greaves, was working hard to reach a solution...

There is £6,000 in the kitty and the target is £30,000. Other proposals are considered although, stressed Mr Reed, the present field was easily the most viable...

which residents would find hard to keep up to high standard."

Another site has been earmarked on farmland, Westwater Road but it is not clear if it will be used...

*'Were you
 fighting then ...
 you might be
 needed again ...*

..... See 'Comment'
 page 1.

**This Month's
"COMMENT"**

"If you have a 300-500 word "Comment" on something directly related to, happening in or affecting Elmswell please submit it! Presentation unimportant - hand written is fine - simply include contact telephone number." Editors.

This Month's 'Comment' comes from members of the Cricket Club and the Football Club who have forwarded copies of correspondence recently received from the Secretary who have forwarded copies recently received from the Secretary of the newly formed Blackbourne Management Association, Parish Councillor Ronald Curry.

The letters were sent to both Clubs following a letter requesting that they meet with the Association to discuss the use of what the new Association called 'our facilities' in the coming year. The letter was dated 1st November. The Clubs meet monthly. The Association comes into being on 1st January 2001.

LETTER 1 dated 26th November

As you have not replied to our letter dated 1st November 2000, with regards to the use of the facilities at the Blackbourne in 2001, we assume that you do not wish to do so. I must inform you therefore, that the Association shall endeavour to find alternative users of the facilities in the coming year.

LETTER 2 dated 3rd December

As we have not had a reply to our letters dated 1st and 26th November it is abundantly clear that your club does not wish to use the Blackbourne facilities in 2001.

We hereby give notice that the facilities will not be available to you as from 1st January 2001, would you therefore please make alternative arrangements for your club.

Asked to say more by way of 'Comment', it was suggested that we point out that the two clubs have a combined history of 180 years in our village and that we extend the compliments of the season to all our readers.

MILLENNIUM HISTORY GROUP



A rare sunny Saturday recently allowed the Millennium History Group to enjoy 2 hours of Clive Paine's fascinating facts as he led them through a breathless history of the Abbey at Bury.

The Abbey once owned property in Elmswell and our links go back to 956 AD. Some of the members are seen here around Elizabeth Frink's celebrated statue of St Edmund.

Photo by Paul Kent

The deadline for the next issue is 5.00 p.m. on Wednesday 3rd January 2001. Copy to Gebblin's office on Station Road Industrial Estate or contact: Jean Barker 241135 or Peter Dow 241841.

The Amenities Association, which publishes the Newsletter, will try to find space for all contributions, regardless of any point of view expressed, if space permits and providing that they are legal and that the writer's name and address are included.

Any views expressed or implied are not necessarily condoned or supported by the Association which offers, in the Newsletter, an impartial service to the community.

Advertising at the following rates. Please let us have an invoicing address with your copy:

Repeat ads - run for 6 months or more - per issue:

¼ page £15 ½ page £20 Full page £30

One off ads:

¼ page £17 ½ page £22 Full page £34

Charitable, non-party political community groups based in Elmswell:

¼ page £8 ½ page £11 Full page £16 Front Cover £22

Payment strictly in advance.

**N.B. Photographs £10 extra.
Classified Ads: 30 words
maximum £5 cash with
order.**

**A surcharge is made on
advertisers from outside
the village.**

Around and About ...

ELMSWELL GARDENING CLUB



Our past Chairman always maintained that the letters AGM stood for "All Go Missing", and that was certainly true at this year's AGM, but that may not be as negative as it would first appear, as it has, in the past been my experience that it is only when organisations and even companies get big turnouts is when things are going wrong, and then it's left to a few very vociferous individuals who are fully paid up members of the "Can you hear me I'm not doing anything" brigade to try and take centre stage, but conversely if no-one turns up it means that everybody is happy with the way things are, so that can be equally gratifying. The AGM agenda followed the usual format with the acceptance of apologies and the reading of the minutes, both the Secretary and Treasurer in their reports reflected on the success of the past year, and looked forward to an even more satisfying statement for next year.

The Chairman in his address spoke of the success of the Open Gardens Day and wished to express his thanks to all the people that had opened their gardens and all the other folk that had worked so hard in achieving so much, he also mentioned what a wonderful and happy day members and friends enjoyed on their trip to Leeds Castle, and that both ventures returned a profit, whilst he said that to pick people out for special praise was not the done thing, he felt that a special thank you should go to Mike Scott for standing in at the last minute as an entertaining speaker on more than one occasion, and also a thank you to Mr David Hawes for his generous sponsorship in printing our Annual programmes, and also to Marguerite Lankester for organising the Leeds Castle trip. All Officers and Committee members expressed a willingness to continue in their posts and thus were re-elected en bloc.

Next came the presentation of the

Competition Cup which this year went to Mrs Ruth Armstrong who, while on her feet, expressed on behalf of herself and the members their thanks to the Officers and Committee for their hard work over the past year.

The Chairman in closing the meeting said that on behalf of himself and the Committee he would like to wish all members and friends of the Gardening Club a Merry Christmas and a Happy and Prosperous New Year.

ELMSWELL BAPTIST CHURCH

It's that time again, this Millennium year seems to have gone so fast. For some it's been great, others it may hold sad memories, others it may be a time which you'd rather forget. However you have felt, why not end

EXPERIENCED CHILDMINDER

has vacancies
from January 2001
for any age children -
can take / collect if
necessary from Playgroup,
Nursery or School.

Holder of Certificate in
Early Years Care & Education.

Fully Insured -
First Aid Certificate.

Please phone 01359 241370

Around and About cont'd., pg3

the year by joining with us for our Christmas services. This year is an extra special occasion, which only happens every six years. Our services fall on Christmas Eve, and this gives an extra special touch than normal. We shall have a service especially for children, families and the young at heart at 11am. An ideal service for those that enjoy a few carols in an informal setting, with no long sermon. Then at 6.30pm we have our carols by candlelight, which is very popular normally, but even more so if it falls on Christmas Eve, so please come early to avoid having to sit at the front!!

Expect a few changes this year, we shall still have the candles, carols and mince pies afterwards, but as for the rest - you'll have to wait and see.

If anyone in the village would like to take part by joining up with an over enthusiastic guitar player, and an even better keyboard operator, please phone Tony on 241541. It would be great to add to our sound with a variety of instruments, so if you fancy

joining us in playing some well known carols and have an instrument stuck up in the loft that you haven't played for ages, let us know. It's your chance to show off your talent to the village.

Beginning in the new year on 8th January 2001 the ladies join up at 7.45pm for an evening with a local JP, that is unless one of them meets up with him beforehand (those Nosh and Natter evenings can turn nasty sometimes). I was told that in November some of them lost their marbles - no comment.

Our normal services and Trailblazers Club meet throughout December at the usual times with the exception of no Trailblazers on 31st December.

Our Tuesday get-togethers have finished for this year, but they were very well attended, and a lot of new ideas have been discussed. Look out in the forthcoming newsletters for our exciting future plans, for both our church and the village.

Has anyone noticed how tidy the grounds of the church are becoming, the ground force team have been out, all we need now is a water feature.

Have a good Christmas and New Year and see you in 2001 if not before. **Mark**



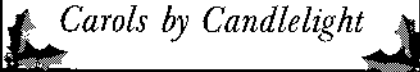
**YOU
ARE INVITED TO:**

***Elmswell
Baptist Church***

24th December 2000

***11am
Family Service***

***6.30pm
Carols by Candlelight***



ST JOHN'S CHURCH, ELMSWELL

First of all an apology to Margaret and Graham Newman - the amount they raised from their sponsored walk for the Children's Society was £2,800 not £1,400 as previously reported.

Once again this year the Church was open on 11 November for a short period of reflection and prayer, then on Remembrance Sunday our service was very well attended, with the Brownies and Cubs taking part. Wreaths were placed near the Memorial by representatives of the Scout and Guide Movement, the Parish Council and the Parochial Church Council.

Our Autumn Fair was held at the Blackbourne and almost £1,000 was raised for general Church Funds - thank you to

Around and About cont'd.. pg5

every one who attended or helped in any way to support this event.

The next day, 19 November, a Service of Thanksgiving was held, marking the completion of the work to the floor, chancel roof and exterior flint work. We still have to pay for the work, so the Appeal Fund remains open!

On Saturday 2 December Mrs Anne Dyball gave an entertaining demonstration of Christmas flower arranging. This was a most enjoyable morning, the proceeds of which will go to the Church Fabric Fund.

The following day, 3 December, the Church was full for a 'Christingle' Service - Elmswell Primary School Choir sang and the Church Music Group accompanied the hymns. The service focused on the work of the Children's Society, all the children received a 'Christingle' - an orange depicting the world, a red ribbon to mark the blood of Jesus, sweets to represent the four seasons and a candle to remind us that Jesus is the light of the world.

We now look forward to our Christmas services to which everyone is welcome.

THE FRIENDS OF ST JOHN'S CHURCH, ELSWELL

Please note our new title! We are now a registered charity, following a meeting of members on 23 October when a revised constitution was approved.

Our last fund raising event for 2000 was the concert by the Suffolk Constabulary Male Voice Choir and was a great success. In reply to all of you who asked if they could make a return visit - they have already been invited! Watch this space for further details. Thank you to everyone who has supported the work of the Friends throughout the year, during which £3,250 has been raised for the upkeep of the Church fabric.

SERVICES etc AT ST JOHN'S CHURCH

Sunday	17 December
10.30am	Holy Communion
Sunday	17 December
6.30pm	Nine Lessons and Carols

Wednesday	20 December
7.00pm	Village Carol Service
Sunday	24 December
10.30am	Morning Prayer
11.30am	Holy Communion
11.30pm	Christmas Eve Holy Communion

Christmas Day

8.00am	Holy Communion
10.30am	Family Service with Music Group
11.30am	Holy Communion
Sunday	7 January
9.30am	Family Service with Music Group
10.30am	Morning Prayer
11.30am	Holy Communion
Sunday	14 January
8.00am	Holy Communion
10.30am	Parish Praise

Sunday School at 10.30am each Sunday except 1st Sunday in month

ST JOHN'S CHURCH FLOODLIGHTING

For the winter months the lights will be on between 5.30pm and midnight.

A night's floodlighting costs £5 (Please make cheques payable to "ST JOHN'S CHURCH, ELSWELL")

NOVEMBER 2000 SPONSORSHIP NOT PREVIOUSLY ACKNOWLEDGED

13	in memory of Natasha Smith's 18th Birthday
----	--

DECEMBER 2000 SPONSORSHIPS

3	in memory of Reg Bloomfield
11	in loving memory of Edward (Ted) Woolnough
13	in memory of Bert Hollings
17	cherished birthday memories of Des, a wonderful husband, dad and grandad
18	For Pat
20	In memory of James Williams and Lilly Mannings
21-24	in memory of Revd Noel Clarke
25	sweet memories of my twin sister, Rita Bennett, on Christmas Day

Around and About cont'd., pg7

26 & 27 John & June Pursglove
28 in memory of Wilfred Hammond

All bookings and payments, please, to:-
Trevor Sadler, Abbots Warren, Church
Road, Elmswell (Tel: 240908)

- ALERT -

CON ARTISTS AT WORK

Postcode Scam - This scam has been targeted at females in particular. They receive a phone call from the Post Office asking them to confirm their company postcode. When this is given, they are told that they have become eligible for some gift vouchers for their co-operation and are asked to provide their home address and postcode in order to receive the vouchers. So far 90% of the women who have provided this information have been burgled, as it is assumed that their houses are empty during office hours. The police are aware of this scam and the Post Office have confirmed that they are NOT conducting postcode surveys.

Telephone Scam - This scam has also been noted whereby a person received a telephone call from an individual who identifies himself/herself as being an AT & T Service Technician who is conducting a test on that telephone line. If they ask you to do the following, DON'T. They will state that to complete the test the recipient should press nine zero hash (90#) and then hang up. To do this gives full access to your phone line, which allows them to place a long distance international or chat-line calls which are billed to your account. The information which the police have, suggest that many of these calls are emanating from local prisons. The information has been checked out by the police and is correct.
DO NOT PRESS 90# FOR ANYONE.

CATHOLIC PARISH OF OUR LADY, STOWMARKET

Parish Priest:

Father Denys Lloyd,
The Presbytery,
29 Lockington Road,
Stowmarket IP14 1BQ
Tel: 01449-612946

Parish Office:

Tel: 01449-771703

MASS TIMES:

Saturdays (First Mass of Sunday)

Woolpit C of E Parish Church, 6pm

Sundays

Stowmarket (Our Lady's, Stricklands Road), 8.30am and 10.15am

Wattisham Airfield Church (first Sunday of each month), 12.15pm

Needham Market C of E Parish Church (second Sunday of each month), 12.15pm

Holy Days

Stowmarket (Our Lady's), 8am; 10m & 7pm

Weekday services in the parish are listed at the front of the church at Our Lady's and in the weekly Newsletter. If you are unable to contact Fr Denys and need a Priest in a hurry, please telephone either 01284-754358 or 01473-741975.

The Parish Representative in your Area is: Mrs Hilda Jackson, Holly Cottage, Long Thurlow, Badwell Ash IP31 3JB. Tel: 01359-259944.

CLASSIFIED ADS

BUFFYS! Do you need any housework done, shopping, ironing, baby sitting, and also gardening. If you do need someone don't hesitate, call us now on 07930 948245.

STEAMERS IRONING SERVICE 01359 242369. For a fast reliable and professional service including free collection and delivery, returned within 48 hours neatly folded or on your own hangers as required.

Around and About cont'd., p28

TIMES OF CHRISTMAS MASSES IN THE CATHOLIC PARISH OF OUR LADY, STOWMARKET

FOURTH SUNDAY OF ADVENT

Anticipatory Mass on Saturday (23rd December) at St Mary's (C of E), Woolpit at 6pm

Masses at Our Lady's, Stricklands Road, Stowmarket at 8.30am and 10.15am

CHRISTMAS EVE

(Sunday 24th December):

Mass at St Mary's (C of E) Woolpit at 9pm

Midnight Mass at Our Lady's, Stricklands Road, Stowmarket at 11.30pm

CHRISTMAS DAY

(Monday 25th December):

Mass at St John's, Needham Market at 8.30am

Mass at Our Lady's, Stricklands Road, Stowmarket at 10.15 am

SACRAMENT OF RECONCILIATION (CONFESSIONS)

BEFORE CHRISTMAS

(At Our Lady's, Stricklands Road)

**CATECHISM RECONCILIATION
SERVICE (with individual Confessions):
MONDAY 4th December at 6.30pm.**

**PARISH RECONCILIATION SERVICE
(with individual Confessions):
THURSDAY, 14th December at 7.30pm.**

**CONFESSIONS also on Tuesday, 19th
December: 7.15pm until 8pm; Saturday
23rd December: 10.30am-11.30am.**

Other times by appointment.
Tel: 01449-612946.

HELPING HANDS CLUB

Our year has drawn to a very successful close following our visit from the Brownies who gave us all much enjoyment with their programme of musical performance and readings (and we love to see the young people anyway), another lively evening



provided by Peter Clarke and his one-man band, and, finally, the highlight of the year, our Christmas Party, well attended by members and a goodly number of invited guests. We all enjoyed a very good meal, the happy atmosphere, a departure from our usual in entertainment this year and, of course, our Christmas Draw.

Our thanks are due to our long-time friend (who maintains his interest in our Club) Andy, for providing the wine, to Roy Finch for supplying the crackers and to all those behind the scenes whose labours go largely unnoticed in the planning, organisation, preparation and setting-up, which are all so important to the success of any event.

To those of our members who are also members of the new Elmswell Luncheon Club, may I remind you that in January lunches will resume at Woolpit Bull, and that the age of entry to the Luncheon Club has been lowered from 60 to 55. Any prospective new members from the village (i.e. you do not have to belong to any other club to qualify), will be most welcome. For further details please contact the Luncheon Club Secretary, Mrs Rosaline Summons on Elmswell 240001.

Age Concern Suffolk, to which body the Helping Hand Club is affiliated, has contacted me to ask if any of our members, or indeed ANYONE with a little time on his or her hands, could consider giving some voluntary help to the Bury Office which is direly in need. I understand that the help required is in the form of manning the telephone and perhaps doing some photocopying if the need arises (instruction given). The office is open between 9am and 1pm from Mondays to Fridays but if anyone has only a couple of hours to offer on any morning it would be a great help. In this case please contact Linda, who mans the office, on 01284 769524 or by Fax 01284 769 337.

Finally, may I wish all members a very happy Christmas together with a happy, healthy and peaceful New Year, and may you all enjoy our winter break.

Betty

Around and About cont'd., pg10

ELMSWELL TODDLERS

Christmas is coming and Elmswell toddlers are enjoying festive preparations. We are busy doing Christmas Crafts - making Christmas tree cards, candle decorations and Christmas sticking amongst other things. We are also busy preparing for our forthcoming Christmas party at The Blackbourne. The children will have party food, play games and a visit from Father Christmas.

Toddlers have also had a couple of 'book looks' at recent sessions and the mums/carers had a night out at Elmswell Fox in November. A group of mums also entered a team in the village quiz.

Elmswell Toddlers meet on Mondays from 1.30pm - 3pm, and on Wednesdays from 10.00am - 11.30am (excluding Bank Holidays) at The Wesley Hall, School Road, Elmswell. We welcome parents, childminders, nannies and grandparents, and the cost per session is 75p, or £1 if you have 2 or more children over one year. This includes refreshments for parent/carer and child.

For further information, please contact Jackie Denial 242857 or Sarah Mansell 241857.

KILN MEADOW

Sunday 3rd December was our last meeting of the year at Kiln Meadow and it took the form of a winter bird watch. All the usual suspects turned up - both volunteer and avian! The weather has been mild and so we didn't see the sort of unusual or rare species which turn up in severe weather, but there was plenty to keep us occupied and entertained. The highlights of the morning were:

- A sparrowhawk, alternately swooping and soaring, and successfully putting the wind up a large flock of woodpigeons roosting in the trees
- A pied wagtail, which obligingly sat for nearly twenty minutes on top of a telegraph pole until everyone had had a good look at him, apparently unperturbed by the dozen pairs of binoculars trained

on him

- Several goldcrests, a tiny but colourful bird (and very fond of hiding in thickets, so difficult to spot)
- A large number of long tailed tits, which like to go about in gangs and don't seem at all put off by human presence.

Our thanks to everyone who managed to crawl out of bed so early, and especially to our leader for the morning, Alan Hall, who can spot birds just by listening. How does he do it?

The January newsletter will have news of all our programmes of activities for 2001. We have plans for some exciting new events. A dawn chorus meeting (even earlier out of bed for this one!), an evening's bat monitoring and pond dipping are just some of the goodies in store.

Thank you to everyone who has supported us during the year. We look forward to seeing you on the wildlife site next year!

Mary Feeney (Tel 241901)

ELMSWELL CRICKET CLUB

Sponsored by Manvers Triumph

Christmas has come early for the Club in the form of a grant from the Sports Aid Foundation for just under £1,000. This in response to a successful bid for finance



to provide outdoor nets so that practice and coaching sessions might be held for youngsters (although adults will be allowed to use the facilities as well!). For too long the Club has compared unfavourably with others in this respect and to receive such a sum is tremendous news indeed.

To ensure a surface that is consistent and safe, the nets need a small concrete base. The Club has, therefore, applied to the Parish Council for permission, at no cost to the Council, to lay such a base at The Blackbourne. The site proposed by the Club is as far removed from houses and paths as it could be. Although we have yet to receive a reply, we did note that the official Council report, in the last issue of this newsletter, stated that the Council was "...fully

Around and About cont'd., pg13

supportive of this request...". We hope, therefore, to be able to provide further good news regarding this development early in 2001.

In the meantime, it's that time of year when 'thanks' are due to those who have helped us survive another 12 months. Inevitably, the list is as long as a Dickie Attenborough award speech so we'll spare you the quantity - just feel the width. Briefly, then, to Clive Manvers for having the Branson-esque vision to be the first sponsor of this Club has had as a whole. His support has been tremendous and even extended to the prizes for our Entertainment Quiz held last month. Obviously, those who served on the Club's Committee, in particular, deserve a mention. They know who they are so we won't bother to name them! Dick Burch, as ever, has been a terrific help. Stan King's been a treasure. Sorry, that *should* read he's been Treasurer - and done a darned good job. We must also thank Tony Green for auditing the accounts wherein our meagre pennies are logged. Of course, we mustn't forget the 'tea persons' (ladies' no longer being appropriate). We are indebted to them for their time and hard work (how about next season, Eileen?). Festive greetings to all the others, too numerous to cite.

OK, having mentioned the Entertainment Quiz we must congratulate 'The Regulars' for winning our annual event. The team, so ably managed by Martin 'Villa' Reilly, just edged out 'The Clever Dicks' in the final straight. The latter was skipped by a man

(guess who?) whose proud boast was that he was the only member of the team *not* to get a question right. There's hope for us all. Again, thanks to everyone who turned up on a foul night and to those, not previously named, who very kindly provided donations for the evening - Babs Ambridge and Ally Leeks.

We held our AGM last month too. Little has changed in the way of the Committee (this will please some and annoy others!) We do, though, have a new Club Captain in the shapely form (not sure what shape, though) of Nigel Greathead. Despite an election process of presidential proportions, he secured the position without the need for a re-count.

Finally, please note that there's still time to grab the ECC stocking-filla for Christmas. The **Quiz of the Century**' sheets are still available for just £1.00 (*not* £2.00 as mis-reported in the last issue) from all usual retail outlets i.e. anyone in the Club. Just provide the correct answers to the 100 questions and you could be in line for the £25 first prize. More fun than a trip to the dentist - get one before they all go. Have a happy and safe Christmas, and peaceful new year. Greetings from everyone in the Club to everyone in the village.

Doug Reed, Secretary (Tel: 241009; e-mail: elswellcc@hotmail.com)

PS: Mark, Baptists - it's cracker time again so your jokes might improve again??!

~~ Novelty Cakes! ~~

You create the idea - Let me create the cake!

Something different for Christmas?

Free Delivery within Elmswell

Jean Barker ~ 01359 241135

Cartoons ✓ Sports ✓ Animals ✓ Hobbies
Anything!...



Around and About cont'd., pgl 4

STDP PRESS

Parish Council representatives on the 'Committee' of the proposed 'Blackbourne Management Association' (Councillors Marriott, Clark and Curry) have, as of December 4, indicated that this Club should find alternative cricketing facilities for 2001, i.e. that Elmswell Cricket Club will no longer play in Elmswell.

To paraphrase Mark Twain, "The reports of our death are greatly exaggerated".

Elmswell CC Century Club

Results

November

£15 M Upson (No.108)

£10 D Wiggins (No.95)

£5 D Royal (No.5)

December

£30 D Wiggins (No.95)

£20 R Farmer (No.79)

£10 L Linnett (No.28)

£5 R Batten (No.88)

£5 H MacLagen (No.96)

ELMSWELL F.C.

Club Sponsors: Mirror Group Newspapers

Warm Up Top Sponsors: Energizer.

First Aid Sponsors: Euro Good Machinery (Elmswell)

Match Ball Sponsors: Rota Rod (Bob Barter), Travel Stop (Elmswell), Tulipa Gardens (Elmswell), Stowmarket Golf Club.

1st Team Sponsors: Mirror Group Newspapers.

2nd Team Sponsors: Elmswell Fox.

1st Team Manager: D Scase; **Assistant:** K Hammond.

2nd Team Manager: B Barter; **Assistant:** S Harrison.

Over 35 Sponsors: C G Finch & Sons.

Fixtures for December / January 01

Dec 30th 1st XI - Mendlesham K.H. (A)
Res - Needham 'B' (H)

Jan 6th 1st XI - Greyhounds (H)
Res - Martlesham Ath (A)

Jan 13th 1st XI - Ufford Sports (A)
Res - Old Newton 'A' (H)

Jan 20th 1st XI - Dennington Utd (H)
Res - Stowupland 'A' (A)

Results for November

Nov 4th Res v Old Newton 'A' Won 7 - 4, scorers G Coleman 3, D Siville 2, T Warby 1, S Goddard 1.

Nov 11th 1st XI v Brantham Ath Lost 3-2 (Omnicup), scorers P Swallow 1, P Farmer 1.

2nd XI v Sproughton Sports Lost 6-2, scorers D Hudson 2.

Nov 18th 1st XI v Mendlesham K.H. Won 3-1, Scorers M Lombardo 2, D Thomas 1.

Res v Benhall St Mary Won 8-0, scorers G Coleman 2, J KeMillan 1, J Watkins 1, S Pinca 1.

Nov 25th 1st XI v Waterside Drew 2-2, scorers S Champion 1, M Lombardo 1.

2nd XI v Bramford Road Drew 2-2 (Orwell Cup), scorers D Hudson 1, S Pinca 1.

Monthly Draw December

Drawn by P Reid

170	W Baldwin	£500.00
243	Sid Redit	£115.00
106	Sue Smith	£75.00
370	J McMillan	£35.00
301	D Redit	£15.00

Elmswell FC would like to thank everyone who participated in our Monthly Draw this year and hope you will continue to do so. We would also like to hear from anyone who would like to join our Monthly Draw. Ring H Mulley on (01359) 240889.

Anyone wishing to join Elmswell Football Club, please ring B Hayward on (01359) 240951.

Training Wednesday nights on Grove Lane pitch.

Compiled by H Mulley



Around and About cont'd., pg16

ELMSWELL MILLENNIUM HISTORY GROUP

Many people will remember Clive Paine's talk on the History of Elmswell last April. Over a thousand years of history were wonderfully described in one and a half - hours. Of necessity, such an undertaking could only focus on the main events of the history of this parish. There was little time for pointing up the fine detail. Recently Clive returned to Elmswell, and in a series of five talks expanded on his original lecture, filled in some gaps, and set local events within a national context.

Few people can present local history in such an enthusiastic and entertaining manner. Whether he is describing the foundation of St Edmunds' Abbey - one of the largest and richest in Medieval Europe, or the foundation of Elmswell's timber-framed parish workhouse; the magnificence of the bejewelled shrine of St Edmunds, or the

simplicity of 'the boy Goymer's coffin,' (sic) Clive never fails to hold his audience's full attention. We look forward to his return next April when he will deliver our First Anniversary Lecture, *Railway Mania 1846 - the Ipswich to Bury line.*

Our programme for 2001 begins on Thursday January 11th with a talk by Dr Tessa Stone on Oral History. Meetings are held in St John's Church Room and begin at 8.00pm.

The History Group's book 'Elmswell - A Marker for the Millennium' is available from the following outlets: Elmswell Post Office, Elmswell Library, St John's Church and The New Saxon Book Shop, Hatter Street, Bury. Price £2.50. Or by post from Maureen Dow £3.20 incl. p&p. on 240390.



Mother's Help Wanted

For family in Elmswell,
commencing January 2001

- * 3.00 - 5.00 or 5.30pm daily, could be flexible
- * Competitive rate of pay
- * To collect 2 children from school
- * Duties include cleaning & ironing
- * Walking distance from Elmswell School
- * Term-time only
- * Reference required

Telephone 01359 242215
after 6pm for further details

Is your garden
a jungle ?

Call Jane Hamblin
garden design and build
Tel: 01359 270644

LAND ARMY DESIGNS
www.gardendesignsuk.co.uk

Elmswell Amenities Association
Registered Charity No. 304879

NOTICE

To all Trustees and Officers, past and present

On 7th December 2000 a quantity of files and papers were seized by officers of the Suffolk Constabulary Fraud Squad under a Warrant to Search *'for material which is likely to be relevant and substantial value to the investigation of a serious offence.'*

The material sought consisted of, *'All accounting records and associated paperwork relating to the Elmswell Amenities Association.'*

I have co-operated fully with the officers involved and given them all the assistance I could by providing them with further documents after their initial search. Other Trustees have freely surrendered all paperwork as required.

The Police are not a liberty to disclose the origin of the complaint which has given rise to their action other than that it was an individual or an individual acting on behalf of an organisation. They cannot say what, specifically, they are looking for.

There are other warrants outstanding for other premises in the village. These premises cannot be identified to us. The warrants are valid until 1st January.

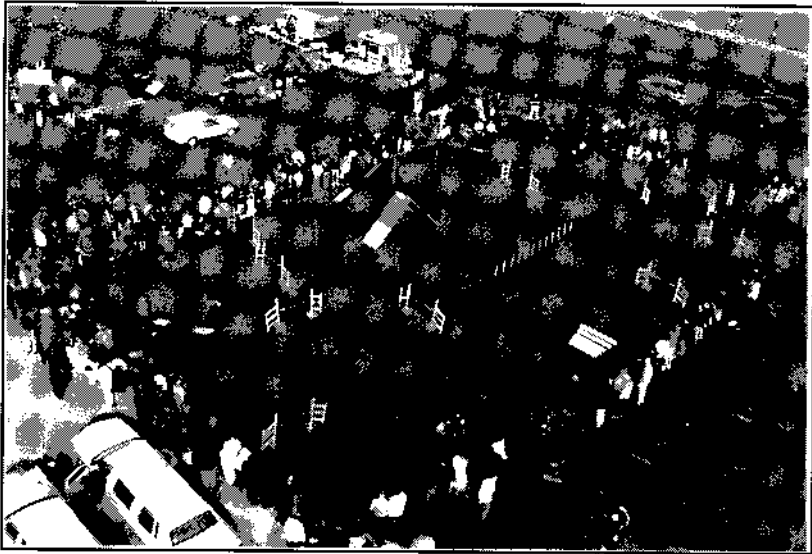
I believe that I have given the officers sufficient evidence for them to make their investigation. I know that Trustees have nothing to fear from the results of these procedures as the Association is competently and properly run within the strict guidelines of the Charity Commissioners with whom our accounts are lodged annually and fully up to date.

If any Trustee would like further details or clarification, please do not hesitate to be in touch on 241841.

Please do not worry. We have nothing to hide.

PETER DOW - Chairman

**This year's Autumn Fayre - as seen from
the top of the Suffolk Fire service's
extending ladder...**



WHY NOT TAKE A LOOK FOR YOURSELF? -

Elmswell's Retained Firefighters are looking for women
and men to join them who are:

- ✓ Aged 18 - 45
- ✓ live and work in the village
- ✓ have their own car
- ✓ can pass a basic fitness/medical test

All uniform and training supplied together with a basic allowance.
Most local employers realise the value of our work and encourage staff to
join this life-saving service.

We are aware of the wasted potential resulting from the under -
representation of women in the service...
give it some thought?

**Ring Mike Mutimer on 241127 for more details - or call in
at the Fire Station Mondays between 7 & 9 pm.**

At a meeting of Elmswell Parish Council held on Monday 11th December 2000 the following points were discussed.

KILN LANE WILDLIFE

Alan Thompson read a report outlining a winter bird watch held on Sunday December 3rd. Mr Alan Hall, a new member of the group took along a laptop computer with a CD-ROM of bird calls making the occasion a learning experience. The footbridge has now been repaired although the group feel that a replacement in the future will be necessary. The Council later approved the purchase of wire netting and stakes for use on the site along with tree pollarding work on one of the oak trees on the site in order to prevent it splitting.

RECYCLING CENTRE

The licence for the Recycling Centre was due to be considered but owing to amendments being necessary on the part of Mid Suffolk the document could not be considered at this stage.

PUBLIC ENTERTAINMENT LICENCE

The Council raised no concerns over a Public Entertainment Licence application for the Methodist Hall on the 1-3 February 2001 for a musical entertainment.

COMPLAINT - STREET LIGHTS/LEAVES

A resident had expressed concern at the lack of street lighting in Ashfield Road, Shop Corner and Bennett Avenue. Councillors were informed that a street light survey has been requested from Eastern Contracting to receive expert advice on the poorly lit areas. The letter also complained of the poorly levelled road surfaces and whilst councillors sympathised with this view the only action that they could take was raise these concerns with Suffolk County Council. They decided to do this. Discussion then took place over leaves causing problems on paths at this time of year. It was pointed out that Mid Suffolk pay us a grant to employ a street cleaner and under the terms of the Environmental Protection Act 1990 leaves are not classified as litter, this problem is the responsibility of the street cleaner. A problem area regarding leaves was identified which is not on the street cleaner's route and approaches are to be made to Mid Suffolk District Council to have this area cleaned.

COMMUNITY SAFETY STRATEGY

Details were read out of the revised aims and objectives of the Community Safety Strategy as supplied by MSDC. Councillors were of the opinion that whilst any strategy to reduce crime and increase public safety should be applauded there was a desperate need for more policemen to be on the beat. The Clerk was asked to address these points to Mid Suffolk District Council.

WINTER MAINTENANCE PROGRAMME

Councillors noted the Suffolk County Council pamphlet outlining their response to ice and snow on the roads, footways and cycle tracks as circulated. The pamphlet makes clear that there is no likelihood of footways and cycle tracks in Elmswell being salted. The only priority route to receive salt on a precautionary basis is Church Hill.

BLACKBOURNE VENTILATION

Unfortunately this matter could not be discussed as only 2 of the 3 anticipated quotes have been forthcoming. The third contractor has expressed a desire to quote, but this has not been received.

BLACKBOURNE CAR PARK

It was decided to undertake work to tarmac part of the car park at The Blackbourne, there was discussion as to whether it would be better to tackle it piecemeal or as one undertaking. It was the Council's view that doing some of the work now would not prevent the completion of the work in the future and therefore at least some of the work should be undertaken straight away.

REPORT FROM COUNTY COUNCILLOR

A report was read from C Councillor G Iredale, which dealt with various matters including the crime and disorder act 1988, abandoned vehicles and policing within the area.

FOOTPATH TO CEMETERY

The Diocese of St Edmundsbury and Ipswich have granted permission for pedestrian access to Elmswell Cemetery via Glebe land between Church Road and the Cemetery. The agents of the Diocese will be contacting the Parish Council regarding specific terms. This offer does not prevent the planned footpath and cycleway between Elmswell and Woolpit from being actively pursued and Councillor Talbot outlined the on-going situation regarding this footway down Church Hill.

CAFE ON A14 SLIP ROAD

A letter was ready out regarding the Cafe on the A14 slip road which outlined that whilst there was no

problem with the building and toilet block on the site there were some problems regarding the placement of those buildings, the display of advertisements and the laying of a hard surface. Councillors expressed concern at the increased traffic usage in Warren Lane which they felt was as a direct result of increased usage of the Cafe and whilst the Cafe supplies a valuable service for lorry drivers and local residents the use of Warren Lane by heavy goods vehicles should be prevented. The Clerk was asked to write to Suffolk County Council regarding this increased usage and the possibility that confusion was being caused by the placement of road signs.

THEDWASTRE PLAY AREA

Councillors noted that the Play Area at Thedwastre has now been completed with the exception of the fencing, which would be provided once the field was dried out. The Contractors had undertaken to remove the spoil heap, again when the weather improves.

CLERKS PAY

Councillors approved an annual increment in pay for the Parish Clerk in line with advice received from National Association for Local Councils.

PLANNING

No applications have been received, the following results were noted:-

1080/00	Shangri-La, New Road	Granted
1090/00	Warren Close	Granted
1018/00	Elmswell Telephone Exchange	Granted

ANY OTHER BUSINESS

Councillor Crook suggested that keyholders for The Blackbourne should be published in the Newsletter. They are: Tony Clark, St Johns House, Church Road, Elmswell 240966 (Day), 242126 (Home). Ron Curry, 1 Crabtree Meadow, Elmswell 242742.

Elmswell Parish Council:

Mrs D Brannick, Parish Clerk, Street Farm, Ashfield Road, Elmswell

Tel: 244134 (24hr answerphone)

THIS REPORT WAS SUBMITTED BY THE PARISH COUNCIL AND THE SPACE PAID FOR AT ADVERTISING RATES.

The Old Tea Room



Veterinary Surgery and Pet Health Care Centre

The Level Crossing, Elmswell

New Opening Hours:-

8.30 a.m. to 6.00 p.m. Monday to Friday

Consultations By Appointment. Tel: 01359 241761

Please call in to see our full range of pet supplies, including flea treatments, worming tablets, pet shampoos, pet food and many other accessories for the routine care of your pet.

24 Hour Emergency Service 01449 613130

This Year's Christmas No 1?!



During the recent cricketing campaign, a bunch of players had been on a long hike and they arrived back in their home village at Elmswell. The next morning being Sunday, several of the lads went to church. The Club Captain commanded the boys in church and after the chaplain had read the prayer, the text was taken up next. Those of the guys who had a prayer book took them out, but this one boy had only a deck of cards, and so he spread them out. The Captain saw the cards and said, "Oi you, put away those cards". After the service was over, the player was taken and brought before the Club Chairman.

The Chairman said, "Captain, why have you brought this man here?" "For playing cards in church, sir." "And what have you to say for yourself, son?" "Much, sir" replied the cricketer. The Chairman said, "I hope so, for if not I shall punish you more than any man was ever punished." The player said "Sir, I have been waiting for this afternoon's match for six days. I have neither Wisden nor any other cricketing yearbook, but I hope to satisfy you, sir, with the purity of my intentions." And with that, the boy started his story:

"You see sir, when I look at the Acc, it reminds me that there is but one Lord's from which all rules governing village cricket emanate. And the Deuce reminds me that the game is divided into two parts, before tea - when it's normally hot and we, having lost the toss, end up sweating profusely in the field chasing the ball all over the park; and after tea - when it gets colder and the opposition, buoyed up by their score, rip through our batting. When I see the Trey, it reminds me that I should be at the crease with any player but Andy Brown. He once called for three runs and, foolishly, I trusted his call. He got home safely but I was run out by something like 44 yards. Who said he doesn't have a sense of humour?

When I see the Four, I think of the four captains who, every week, preached how we should play the game. We only elected one at the AGM but, once on the field, several believed they should give the orders. And when I see the Five it reminds me of the number of times the Club had to plead with Tony Sadler *not* to make a comeback. When I see the Six, it reminds me that David 'Wink' Peachey actually *did* once clear the boundary in a match (though he didn't last long afterwards). When I see the Seven it reminds me of the number of times, at Committee meetings in the last year, the Chairman has said he'd resign.

And when I see the Eight, I think of the number of balls in a Ben Whaling over (we're often lucky if it's only eight). When I see the Nine, I think of the 'help' the Club's been given by the newer group of members on the Parish Council. When I see the Ten, I think of the number of players we are usually left with before the start of a game.

When I see the King, I realise I've had too much to drink, as I do know that Elvis is dead. And when I see the Queen, it reminds me that only Nigel Greathead is reported to have more homes than she has. And the Jack or Knave is that devil, the umpire from whom all decisions seem to flow - but to the opposition rather than us.

When I count the number of spots on a deck of cards, I find 365, a total this Club has never achieved in a single game and, probably, never will.





The words 'hell' and 'freezing over' come to mind. There are 52 cards, the number of times Dave Wiggins moans during a game about the fielding, the umpiring, the batting, the sandwiches, the pitch, the opponents ... anything! There are 4 suits - three more than were worn at the Club dinner last year. There are 12 picture cards, the number of letters in Ronald Farmer, who made a welcome return to the Club and smashed the ball all around the hallowed square (not the outfield, just the square!). And there are 13 tricks, the number of months in the year that players' wives and girlfriends reckon is really taken up with cricket! So you see, sir, my pack of cards serves me as an Elmswell cricketing bible, almanac and yearbook."

"And friends, the story is true. I know, I was that player."

Monica L. Carlin

MSSCh. MBChA.



Ruth E. Carlin

MSSCh. MBChA.

Qualified Surgical Chiroprodists

Registered Members of the British Chiroprody Association
Surgery & Visiting Practice

Langdales', The Green, Woolpit, Suffolk, IP30 9RQ.

Tel. (01359) 241731

Dieselcare & B Starie Motor Engineers

Unit 1 Thurston Granary — 01359 232114 or 0802 278042

- * Fixed price servicing, major service from £48 including parts
- * Interim service from £35 including oil and filter
- * Unipart clutches supplied and fitted (2 year guarantee) from £98
(Escort 1.3 MK3 80-90)
- * Mechanical repairs, MOT preparation, all makes including light commercials
 - * Diesel specialist, injectors, injector pumps reconditioned
 - * Exhaust emission problems, starting problems
 - * Engine management & electronic ignition diagnosis
 - * Starters and alternators supplied

**ALL AT VERY COMPETITIVE PRICES
ALL MAJOR CREDIT CARDS ACCEPTED**



Between the Lines

.....putting some flesh on the bare bones of this month's Parish Council meeting (see pages 24-25 for the official report) ... noting some of the undercurrents that swirl about our community ... our Diarist reaches the parts others can't quite manage to tickle or scratch as appropriate.

To begin at the end ... 32 people attended the December Council meeting which was one of the saddest yet. Towards the merciful close of business one of them, in the village for just 6 weeks, pleaded, as the confrontational atmosphere of recent weeks threatened to blossom into all out war, for some humour, some two-way talking. To no avail. Chairman David Marriott is a good man in a crisis. Has to be as his depleted raggle-taggle army stumbles aimlessly into deeper and deeper mire. But the commuting is taking its toll and the excuses are stretched to breaking point.

The Blackbourne Management Association needed the cleverest footwork. This organisation comprises the Chairman of Council, his Vice Chairman, the Chairman of the Planning Committee and one other member. The other member is a Councillor. This structure is intended, we were told, to liberate Blackbourne, to, 'let the people run it.' Keen readers will find elsewhere in this edition some idea of the dangerously shaky basis on which this body is constituted. But this meeting was told that the two bodies are, 'at arms length.' Tremendous hurt and upset has already been caused by letters from Councillor Ronald Curry writing as Secretary of the 'new' body (see 'Comment', page 1). Attempts at the meeting to get the Council's view on the way the village is being treated by the Association came to nothing. Questions relating to the Constitution were fudged. However, copies of The Constitution are available from the Clerk. No charge was mentioned.

However, individual battles are being won. Having broken their stick,

the Association has stolen a carrot with which to tempt the Sports Clubs. All they ever asked for - a token £1 annual fee, their own key to Blackbourne, no strings attached - if they will play ball of one kind or another. This is, apparently, what is on offer. After almost two years of obstinate refusal to come off their high horse, the Big Three have, in the words of one of their number, 'learned a lot over the past two years.' What next ... perhaps the disabled ramp is to be straightened out to remove the thrills and spills chicane effect?

The larger carrot, the bowls pavilion, is also back on the agenda. No clerk's office or bar this time. They are to go into the new extension of the hall at Blackbourne. You heard it here first.

More access to Blackbourne problems. Apparently, in the words of Cllr Burch, the ghost is back. This is the mysterious presence which was blamed for earlier 'security problems' at Blackbourne. Lights were being left on, doors left ajar ... spooky stuff. So all the locks were changed. This time floors are being dirtied as well as the lights and doors phenomenon. According to the Bowls Club, the last users prior to the incident, and much abused for their pains, it wasn't them. Do we hear the jangle of a new set of keys - or is it chains? Of course, we could check the log of the security monitoring system to see who has been in and when. But why spoil the fun?

The Play area at Thedwastre Close is open. or, rather, it will be when the ground water subsides. The area on which it is built is under water for three months of the year - in a normal year. This year has been exceptional. The ground is badly churned up from the installation work. It is too wet for the fencing to go in (nevertheless, the builders have been paid in full.) The last play area on Thedwastre was scrapped just a couple of years ago for the very reasons that this one will struggle against - a totally unsuitable site. The new equipment was installed at no cost to the village as part of the deal which built the new flats at Jubilee Terrace. The Parish Council asked the user groups where a new play area should go. They opted overwhelmingly for Blackbourne. The recent Village Appraisal asked a similar question and came up with the same answer - Blackbourne. Any more questions?

And finally, although photocopies of recent press reports were evident in the papers of certain Councillors, nobody mentioned **the raid**. Shhhhhh!

OUR NEW VILLAGE GREEN?

We have been promised an Independent Enquiry into our claim that the land at Pightle Close (see map) on which Planning Permission has recently been granted for 30 houses, is, by rights, a village green.

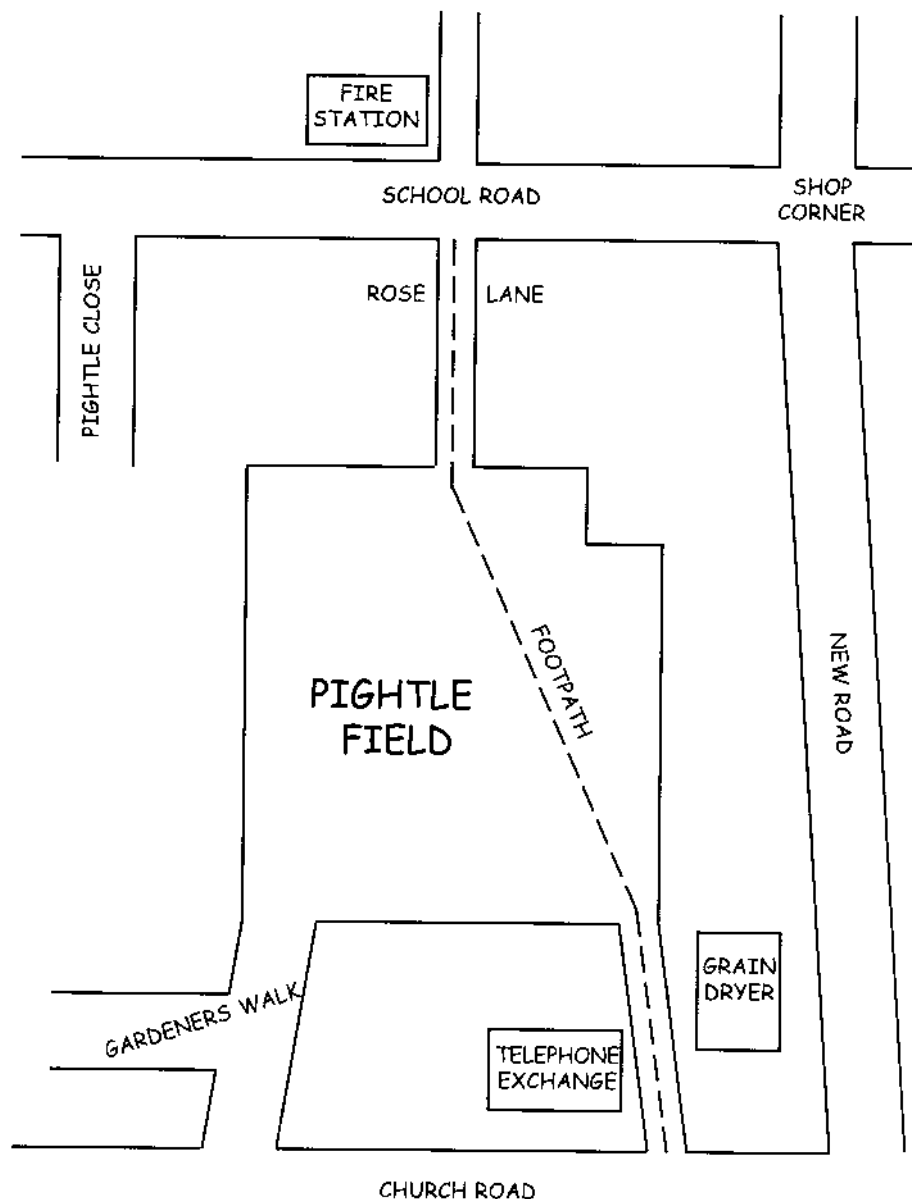
YOU may be able to help to preserve this priceless green space FOR EVER.

Consider the following list of activities. Try to recall whether you, your children or their children have ever used the Green in any of these OR SIMILAR ways:

DOG WALKING ... BALL GAMES ... PICKING
BLACKBERRIES OR MUSHROOMS ... BIRD
WATCHING ... PICNICKING ... KITE
FLYING ... BONFIRE PARTIES ... HORSE
RIDING ... FETES OR GET-TOGETHERS

We have a good case in law so far, but extra support could prove vital.

Please, think back. If you think you can add to our list of users, please ring Rex Durham on 240718



NOTE: This map may not be completely accurate and is certainly not to scale.

Letters to Editor

Letter to Ed from Micky Powell of Station Road

Johnny-Come-Lately clowns ...

I have lived in Elmswell for 41 years this month and many villagers will know that I take an occasional interest in community matters, particularly the sometimes antisocial behaviour of certain youngsters with whom I often have a quiet, invariably effective, word or two.

My reasoning with the rowdies is usually along the time-honoured lines of 'why don't you grow up/act your age/behave in a more mature way,' etc. I may tell it differently, but that's usually the message.

I am, however, finding it increasingly difficult to suggest to these impressionable young people that there is a maturity in adult years for which they should be aiming. This is because of the increasingly bizarre behaviour of our elected representatives, surely the role models within our community.

Our County Councillor no longer travels the potholed roads of his constituency. He accepts 'an offer he can't refuse' for his house and moves to Sussex to be closer to his holiday home in France. We are left unrepresented. If all of the noise and rubbish was experienced outside the houses of any of our so-called 'elite', something would soon be done, I am sure.

However, our Parish Council Chairman demonstrates his commitment by moving to the other side of Bury but refuses to do the honourable thing and resign so that a villager can take his place. One Councillor does resign because he moved out of the village (although no-one has ever seen him) and another goes under an enormous cloud of rumour citing 'personalities' as his reason for abandoning his post.

Meanwhile, we struggle to get into our hall at Blackbourne because the Johnny-Come-Lately clowns who remain won't let us have a key. What's more, they blunder about insulting people who have been making our community work for years and creating rifts and tensions all over the place. They write to the Football Club (established over 100 years) asking whether they want to use 'OUR' facilities next year.

Those facilities, the people that won them for the village and the clubs and groups that maintain and use them, were around for a long time before these Councillors swaggered on to the scene. They seem to have no appreciation of what has gone before - for generations. They don't seem to grasp the fact that they were voted in as stewards, not bosses.

They are setting the worst possible example. I suggest that they move to a village where they can play their manipulation games on a less troublesome populace and leave Elmswell so that the people who know the village can run it.

I remember their party election leaflet. Apart from promising 'Open Access to All,' 'Integrity With Efficiency,' and 'Respect for Local Opinion,' (don't laugh, it really did) it accused the last lot of offering 'A Farce In Three Acts.' They are giving us instead 'A Night at the Opera.' The Marx Brothers at their crazy best!!!

Letter from Eddie Stagg, Chairman, Elmswell Luncheon Club

'...difficult and upsetting time...'

It is with some considerable sadness that I have to report that the Luncheon Club is having to leave the village.

The decision was made by a unanimous vote of our Committee which has spent many weeks looking into alternatives. There are none.

Our troubles started when the Parish Council, without warning or consultation, bumped up our rent for Blackbourne by over 160%. Then they took exception to our reaction. Newsletter readers may remember some very unpleasant correspondence which included criticism for shopping at Tescos. Individual Councillors, apparently led by Councillor Tony Clark, began a campaign which included seizing our account books. As a direct result, Suffolk County Council Social Services decided that we should no longer enjoy our privileged position whereby they had, for the past 15 years, given us grand aid for our transport and our cook. This is outside of their current policy and had to stop.

The County Council have been very fair with the Club and gave us until the end of the year to make alternative arrangements. Unfortunately, the only way we could stay on at Blackbourne was to employ a cook ourselves. This posed so many legal and liability problems that the Committee felt unable to take the risk.

Neither of the village pubs can, at the moment, accommodate us. We shall, from 8th January, be meeting on Monday lunchtimes at the Woolpit Bull where between 26-30 members will enjoy a two course meal for £2.95 each.

Any retired person aged 55 or over is entitled to join the Club. We have outings during the year and the Committee is looking forward to a new beginning and a bright future. Do contact our Secretary, Rosalie Summons, on 240001, or any Club member for more details.

On behalf of the members, may I thank all the various community individuals and organisations who have rallied round to help us in so many ways during what has been a difficult and upsetting time.

Letter from Elmswell Bowls Club, Elmswell Cricket Club and Elmswell Football Club

"Once again treated with contempt"

Readers of "The Elmswell Newsletter" will, no doubt, recall our letter in the November issue on the subject of the proposed Blackbourne Management Association. In that letter we expressed the hope that the representatives of the Parish Council would have discussions with the representatives from the sports clubs about the serious concerns and reservations which they hold regarding the proposed constitution, organisation and set up of the Association.

It is with very great regret that we have to inform the village that the Parish Council representatives (Councillors Marriott, Curry and Clark) flatly refused to have any discussions with, or even to listen to, our members who were, once again, treated with contempt.

The sports clubs' representatives are very concerned about the proposed constitution. In their opinion the document is extremely flawed in many areas and could, without

doubt, lead to the members of the proposed body being held personally liable for financial expenditure and losses. Not surprisingly, our representatives were not prepared to put themselves in this position. Councillor Clark and his colleagues have repeatedly refused our members' reasonable request and continued to do so at the meeting on 24 November.

We are aware that an informed and professional resident of the village holds serious reservations about the proposed constitution, similar to those held by our representatives, and has, quite voluntarily and independently of our three sports clubs, written to the Parish Council to that effect.

We can only wonder at the attitude of the Parish Councillors. What can they possibly have to hide? There has been a lot of talk recently from the Parish Council regarding the building of bridges between itself and organisations in the village. This refusal by them does not suggest they have much commitment to these expressed desires.

We must emphasise that we are fully committed to The Blackbourne project and wish to be involved with its development. It is a substantial amenity within the village and, between them, the three sports clubs represent a significant percentage of the Elmswell population. There can be no conceivable benefit in not promoting and contribution to its development so it is all the more curious that the clubs' enthusiasm and commitment is not, seemingly, matched by the Parish Council members of the proposed management committee.

Until such time as our representatives' reservations are considered and mutually satisfactory solution agreed, we have reluctantly decided that they must withdraw from the Blackbourne Management Association. Obviously, this cannot be good for the village. We must hope, therefore, that the relevant Parish Councillors will now reconsider their apparently intransigent position and meet with our representatives so that their problems can, at least, be aired and, hopefully, resolved.

If the Parish Council will not listen to us through our representatives, we express the hope that reason will prevail and that it will, at the very least, consider the independent advice which it has received.

from Little Elm Pre-School

... Thank you ...

Little Elms Pre-School has recently held a number of fund raising events, and would like to thank the following for all their support:

4 Paws Pet Food
The Flower Station
Avon
Bright Acres Tool Hire
D & J Fish Bar
Thurlow Nunn & Standen
Elmswell Chinese Takeaway
and the parents of those children who attend Little Elms.

Without such great support from many people, the children would not enjoy the many toys and equipment we are able to buy.

from Mark Proctor of Wyatt Close

Parish Council ... follow her example

After reading about the unfortunate events after the Football Club dance (letters to the Editor November 2000) I felt indebted to write about our family's experience when hiring the Blackbourne on the 5th November to celebrate our daughter's 5th Birthday.

On arriving at lunchtime we stumbled across an assortment of various discarded clothes, football kits & boots, it being a Sunday one of the local teams were using the Blackbourne's changing facilities but due to a misunderstanding they couldn't get into the changing rooms. On top of that the heating wasn't working, it was blowing a gale outside and inside the hall it was freezing. Not ideal conditions to entertain thirty odd children, parents and a magician!

Who do you call? step forward Debbie Brannick, 'How do I get the heating to work?' I enquired. 'I'll be there straight way' came the reply. Half an hour later two young footballers were tidying up the hallway and the temperature in the hall was ready made for party dresses and magic tricks! Nothing was too much trouble for her and she didn't seem to mind in the least that her family Sunday afternoon was disturbed to help ours run smoothly. I would like through this newsletter to thank Mrs Brannick for her help that day and hope the Parish Council appreciate her efforts and follow her example.

[The Parish Clerk's direct line number is no longer available to the public. All emergencies, as above, are referred to the answer phone. Ed.]

from Tony Chaplin, Poppy Appeal Organiser

Grateful Thanks

The Poppy Appeal in the village this year raised the splendid sum of £1,192.70p. As the Appeal Organiser in Elmswell I would like to thank everyone who gave so generously to this very worthwhile cause.

Grateful thanks are also due to my band of collectors, who despite the bad weather, clock changing making the darkness come earlier, and even in one case not feeling at one's best, turned out to make it another high total.

Thanks are also due to both the Parish Council and to St John's Parochial Church Council for their generous donations.

The money given is counted, banked, and the paperwork completed and sent to Appeal H.Q. The leaves, like the poppies, have fallen and soon the evenings will begin to get lighter again. Christmas will be but a memory, the summer (will we get a decent one) will be here and then I shall be looking for helpers for next year - anyone who would like to join the team (you do not get "voted off") please get in touch with me.

Tony Chaplin, 22 Pightle Close, Elmswell, 242059.

from John Dodds

... noise from the A14 ...

With reference to the October letter from Mr M Hutchens of School Road concerning the road noise level, especially that of the A14, he advised to "be like all politicians, ignore it".

Mr A Couzens of Cresmeadow Way, who is not a new resident of Elmswell by the way (Nov letter) was emphatically troubled by the incessant, perpetual, non-stop 24 hour, 365 days a year noise from the A14 emanating from the concrete section of the Elmswell/Woolpit roundabout to Haughley New Street. This disturbing intrusive racket has

caused one resident in that area to move elsewhere as it upset him so much! My wife and I complained about this noise pollution about 10 years ago. The Mid Suffolk Environmental Officer kindly came to see us to assess the situation. Of course the noise was not loud enough for him to be able to take any action but he did advise that should - if and when - the ill-chosen road were to be resurfaced that we should write to the appropriate authority to plead for a suitably more silent surface to this road which was built around 1978 some seven years after we had bought our house in Elmswell.

Why complain? When our cars are assailed by all sorts of other noise such as that from trains, aeroplanes and thumping radios pounding out their awful cacophony? Well, it is a matter of the interminable persistence of the noise that penetrates double glazing and never ever stops. Interestingly a friend of mine who lives in Great Hallinbury complains not of the aeroplane noise of Stansted airport down the road but of the never-ending Chinese torture of the M11, just over a quarter of a mile away!

So what is to be done? Change of organisation has meant that our friendly Mr Jim Nunn, the Western Area Highway Surveyor, cannot help us. His office knew a man who could. A phone call to the Owen Williams Agency of the Ministry of Transport (they do the repairs, alterations etc on the A14 trunk road) advised me to phone Mr Simon Amos (01234 796202) of the Highways Agency in Bedford. He advised that there was no immediate plan to resurface the offending road at the moment although the Government was making moves to deal with such problems. "The road had not yet been identified ..." for quiet resurfacing. Annual assessment with a deflectograph would continue. He strongly advised complaining villagers to write to our local M.P. - David Ruffley - to alert the authorities of this very real problem. That way we would hopefully have the noise reduced sooner than later.

from Elmswell Sports Advisory Committee (formerly Elmswell Sports Club)

Huge, Potentially Limitless, Risk

The Elmswell Sports Advisory Committee is a registered charity which administers the village's playing field and facilities at Grovc Lane.

The Committee has a strong 'sports' element, unsurprisingly, but includes representatives from St John's Church and the Parish Council and elected individuals from the village.

We have been pleased to be involved since the village acquired Blackbourne Meadow in co-operating with the Parish Council regarding the running of the facilities at



TaxAssist Direct

**The Tax and Accountancy Service for
Small Businesses and Taxpayers**

Self Assessment, Tax Returns, Annual Accounts, Book-Keeping,
Employed, Self-Employed or Starting a New Business

For a free initial discussion without obligation call

Clive Jenkins. Tel/Fax 01359 242284

Blackbourne in tandem with those at Grove Lane. The contribution from some of our expert members in areas of grounds maintenance and use has, we think, been of great benefit. We were involved in discussions as long ago as 1997 towards setting up an independent body to administer Blackbourne, thus saving a considerable rates bill for the village. Along with other user groups, we have not been consulted by the council in their recent proposals for a 'Blackbourne Association'.

However, we have been made aware of the dangerously inadequate basis on which the Blackbourne Association is to proceed. There has been public concern expressed by the non-Parish Council Appointees who have felt obliged to walk away from the proceedings unless and until the document which lays down rules and procedures is radically amended.

Their feelings are echoed and soundly backed by professional advice. We have seen such advice and are so concerned that, at a recent meeting, it was agreed that we should publish this warning.

If any club, organisation or individual is approached to serve on the Management Committee of the Blackbourne Association as it would appear to be currently constituted, they should be aware that extremely serious shortcomings in the governing document render all Committee Members, personally and individually responsible in a variety of situations which could arise. This is a huge, potentially limitless, risk.

The Sports Advisory Committee is happy to pass on detailed elements of the advice they have received if any club, organisation or individual wants them. Contact Peter Edmonds on 241640 or Graham Newman on 240846.

Individual Parish Councillors have received details of this very serious situation. It is to be hoped that, until they take the responsible course of action and re-draw their documentation and procedures, no-one outside the council is persuaded to put themselves at risk.

Parish Council By-Election

Following the resignations of Barry M Samain and John Helliwell from the Parish Council, an election has been properly requisitioned by 20 electors in the village.

The Poll, if the election is contested, will take place on 25th January.

The Newsletter invites contributions from Candidates of up to 500 words by way of an Election Address to the voters.

Any such contributions must reach the editorial office at Gobblins on the Station Road Industrial Estate behind the Fox by 5.00pm on Wednesday 3rd January.

Providing that the text is legal and decent it will be printed without editorial comment in alphabetical order of the candidates' surnames.

.....

Points to Ponder

.....

DO WE DESERVE CRIPPLING FUEL TAXES AS A MATTER OF GLOBAL OBLIGATION?

The "knee-jerk response" is a cliché borrowed from the medical profession and used by the media in almost every news bulletin. Speeches, impending legislation, the budget etc have to be announced upon radio and television BEFORE presentation in Parliament. What is the hurry? Now it's the weather. We are heading - so they tell us - for "Global Warming" or are we?

A short memory together with a mere 300 years of weather records might tend to cloud our judgement. Many of us remember the serious snowfall in 1947. We had the coldest winter in 1963 since 1740. At this time the new ice age theory began to emerge: we were going to have colder and colder winters!

However, a study of stalagmite growth by scientists of Exeter and Newcastle has demonstrated the probable pattern of rainfall over the last 1000 years. The study showed wide variations in the weather with nothing to support global warming, or an impending ice age.

The effects of terrible weather have been very severe. Much of these effects have been self-inflicted. Bad planning decisions where housing estates have been built on flood plains; trees and hedgerows have disappeared, ditches filled in. For example, can anyone tell me why the Wetherden Road just outside Elmswell 30 mile an hour limit has been flooded for the past couple of months?

We have just had the wettest Autumn ever (since records began). Floods, mud slides, hurricanes and all the horrors they brought during this year in Mozambique, India, the United States, England even, and many other parts of the world have failed to impress the representatives of the 180 governments who reviewed the work of some 3000 meteorologists at the Hague in 12 days of November 2000 upon the subject of climatic change. Negotiations to agree to measures to implement the 1997 Kyoto Protocol collapsed on Saturday November 25th! Tempers were lost and Frank Loy the US negotiator received a well aimed custard pie from an indignant protester!

The two camps, basically France, Germany, Denmark and Sweden on one side faced the USA on the other. The United States having only 4% of the world's population manage to be responsible for 25% of the world's greenhouse gases! The European countries emissions are much less because Great Britain's performance has a great deal to do with the decline in manufacturing and the collapse of the coal industry. Germany has benefited by the closure of East Germany's industry. France produces cleaner air by relying on nuclear power generation without apparently worrying about the possible future awful consequences. Remember Chernobyl?

Whatever you may think about climate change which has always been capricious, never before have greenhouse gases belched into the atmosphere in such quantities. America fears that any substantial reining back of these emissions would affect their standard

of living and probably that of the rest of the world, hence a reluctance to impose taxes on fossil fuels especially petrolcum.

We are told that the concentration of carbon dioxide (a greenhouse gas with a very long life) in the atmosphere has increased by one third in the past 150 years. Moreover 26 per cent of all carbon dioxide emissions come from the transport sector, much of it due to cars which have increased tenfold in the last 40 years, with an average distance travelled per person of 18 miles! There has been a concomitant decrease in the use of buses, coaches, cycling and walking.

A trend in global warming there may be as extreme weather conditions and melting glaciers portend. Reduction of greenhouse gases will reduce ill-health in the shape of cancer, heart disease, obesity, high blood pressure and diabetes. So if the former is not true but the latter is, then there is reason enough for the world meeting on climate change in October 2001 to do something positive. Don't you feel that this problem boils down to finance?

Perhaps we should all heed the Cree comment: ONLY WHEN THE LAST TREE HAS DIED AND THE LAST RIVER HAS BEEN POISONED AND THE LAST FISH HAS BEEN CAUGHT WILL WE REALISE WE CANNOT EAT MONEY.

John Dodds

.....

BUNDS - BUNDS

VERTICAL FREE QUOTES
VENETIAN WITHOUT OBLIGATION
ROLLER FREE FITTING
PLEATED HOME SELECTION
 CANOPIES
 CONSERVATORY SPECIALIST

**NO GIMMICKS - JUST THE
BEST**

VALUE - ALWAYS

**C.D.R. SUNBLINDS
STOWMARKET (01449)
672750**

8 am - 7 pm Mon.-Sat.

**WANT TO LOSE WEIGHT?
OR
IMPROVE YOUR FITNESS?
WHY NOT TRY STEP CLASSES?**

**Kind to the body
Burns fat**

**And it's fun!
Get an all round body workout**

**Every Tuesday
Methodist Church,
Wesley Hall,
Elmswell**

**Fully qualified instructor
For more details or to book your
place contact**

**Pat Ward on 01359 241554
B.H. (Nons). CERT ED. YM.C.A./R.S.A.**

What's On in Elmswell ?

To be included in our events diary make sure you send separate notification of your announcement.

December

- 16 "THE BEAVERS"
- 17 Nine Lessons & Carols, St John's Church, 6.30pm
- 17 Toddlers Christmas Party at the Blackbourne
- 20 Village Carol Service at St John's Church, 7pm
- 24 Family Christmas Service, 11am, Elmswell Baptist Church
- 24 Carols by Candlelight, 6.30pm, Elmswell Baptist Church

January

- 11 History Group talk - 'Oral History' - 8pm at St Johns

February

Thurs 1st - Sat 3rd

Elmswell Amateur Dramatic Society presents
'Aladdin'.

- 8th History Group talk - 'Archaeology in Elmswell' - 8pm at St Johns

Tell us more - Tel 241841

LARK
ELECTRICAL

Consult us for all types of
installations, repairs and
maintenance

(01359) 243500

Fax. No. (01359) 244405

Email: info@lark-electrical.co.uk

Lark Electrical Ltd
(Incorporating E L Smith), Woolpit Business Park, Woolpit



National Inspector Council for
Electrical Installations Contracting

NICEIC
APPROVED CONTRACTOR

