

Sixteen years of Parish Record.....  
..... ALL THE FACTS THE COMMUNITY NEEDS.

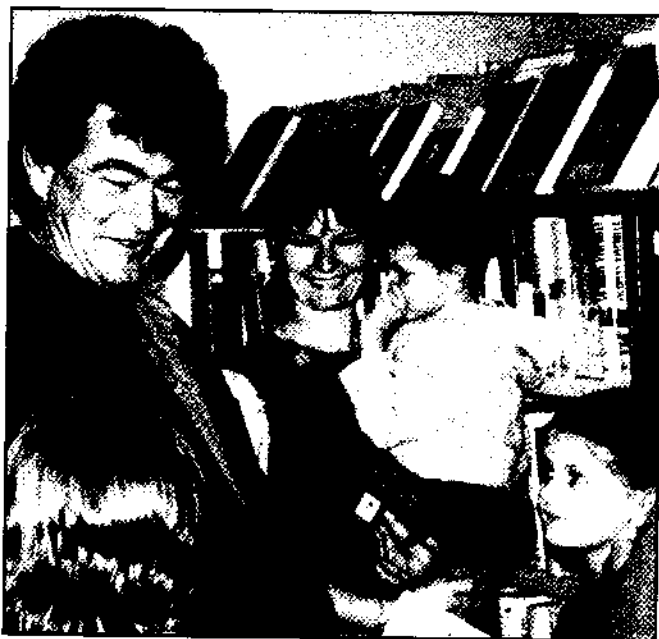


# The ELMSWELL Newsletter

OCTOBER 2001

..... Your Parish Matters

**POET IN MOTION .....**



..... see centre page for news of our New Library

Published by the Elmswell Amenities Association Reg. Charity No. 304879.  
Delivered free to every household and to businesses in the community.

A volunteer enterprise entirely supported by advertising.

**PLEASE SUPPORT OUR ADVERTISERS.**

**This Month's  
"COMMENT"**

Once again Autumn is upon us, the evenings are drawing in and the weather is getting more like winter as the days pass. It always seems to get like this when the time comes round for poppies and Remembrance Time.



At this time, this year remembering is particularly poignant when the recent horrific events in America are considered. What our response will be is still not clear (at the time of writing at least) but something which is clear is that our British Armed Forces will be involved and that means the chance of casualties and inevitably more calls on the Earl Haig Fund. This in turn derives a lot of its income from the sale of poppies.

Last year we in Elmswell raised £1192 towards the total which nationally was over £20 million pounds. Suffolk raised nearly £380,000 of this total. Poppy appeal headquarters works out an average donation per head of the population of each county and Suffolk came 7th with an average donation of over 60p per head. The national average is 35.7p per head.

During 2001 the Earl Haig Fund is budgeting to spend over £42 million on its benevolent work so it is important that it raises as much as possible from the Poppy Appeal collection.

The House to House collection this year is between Saturday 27th October and Saturday 11th November. During this time I hope that someone will call on you or that you will give a donation in one of the boxes in the village shops.

Despite the generosity of the people of Elmswell last year Suffolk slipped a bit on its 1999 position of 3rd so please give generously and let's see if we as a village can better 2000 and help the county regain its 'podium' position.

P.S. We are way ahead of Norfolk, Essex and Cambridgeshire.

**Contact: Tony Chaplin (Poppy Collection Co-ordinator)**

# Around and About ...

## MILLENNIUM HISTORY GROUP

24 members attended the brief AGM held in the Wesley Hall on 13th September. A goodly number of members of the public joined them later for a showing of films from the East Anglian Film Archive by Geoff Clark who is a film archivist based at the university of East Anglia. The 30,000+ films held in the archive have mostly been contributed by the general public and are copied for showing all over the County and beyond.

We saw some fascinating footage. There were trolley buses in Ipswich 1934, floods at Combs in 1938 (little changes), in what was then Mr Barnard's garage. Wetherden school children celebrated their school's centenary in 1967 by dressing as Victorians (little changes!), and an intriguing piece from the BBC made in 1975 related the legend of the Green Children of Woolpit. We visited

Yarmouth quay in 1902 and Bury St Edmunds in 1913, all visits illuminated by Geoff's gentle, evocative and always informed commentary.

True to the tradition of proper film shows the projector broke down. Professional to the last, Geoff had a spare one in his car. Sweet wrappers were not, on this occasion, thrown at the screen.

We went on to finish the evening with an insight into the phenomenon that was The Singing Postman, Alan Smethurst. There was a scene in Girling's Bakery at Stowmarket and of Alan in his studio at Combs from where, for a fleetingly popstastic moment he battled with the Rolling Stones and the Beatles for the No.1 spot in the charts.

A thoroughly bizarre collection of intriguing samples of living history, far removed from the stodgy fare so many of us remember from school. As is our next series of events, four talks by Clive

---

**The deadline for the next issue is 5.00 p.m. on Wednesday 14th November 2001.** Copy to Gobblin's office on Station Road Industrial Estate or contact: Jean Barker 241135 or Peter Dow 241841.

The Amenities Association, which publishes the Newsletter, will try to find space for all contributions, regardless of any point of view expressed, if space permits and providing that they are legal and that the writer's name and address are included.

Any views expressed or implied are not necessarily condoned or supported by the Association which offers, in the Newsletter, an impartial service to the community.

Advertising at the following rates. Please let us have an invoicing address with your copy:

Repeat ads - run for 6 months or more - per issue:

¼ page £15      ½ page £20      Full page £30

One off ads:

¼ page £17      ½ page £22      Full page £34

Charitable, non-party political community groups based in Elmswell:

¼ page £8      ½ page £11      Full page £16      Front Cover £22

Payment strictly in advance.

**N.B. Photographs £10 extra.  
Classified Ads: 30 words  
maximum £5 cash with  
order.**

**A surcharge is made on  
advertisers from outside  
the village.**

## Around and About cont'd., pg2

Paine who is a great favourite wherever he speaks, nowhere more so than in Elmswell where he launched our group with his inaugural lecture.

See the advertisement in this Newsletter. All are welcome to give living history a try.

### ELMSWELL TODDLERS



Another month has flown by and the Toddler group is enjoying a busy build up to Christmas.

The Nearly New Sale was yet again a roaring success. Toddlers raised in excess of £240 which will help for our forthcoming Christmas Party on Sunday 16th December. Thanks go to everyone involved with the preparations for the day including the many volunteers who leaflet dropped around the village; those (not so many) who labelled up the donated items; the helpers on the day; those who sold; those who kindly donated and finally, those who bought! The next sale will be sometime in March. Watch this space for more details....!

On Sunday 30th September we experienced yet another rain-drenched event - the third this year - with our village treasure hunt/quiz. Despite the continuous downpour, a very impressive number turned out to traipse around the village answering some easy-ish questions and on completion enjoying a glass of wine. In October we look forward to a Pot Luck Supper (Tuesday 16th at 8pm) and during half term, Tempest Photos

will be with us (Wednesday 24th 9.30am - 11.30am at the Wesley Hall). So if you'd like your little treasures photographed do come along. The pictures make good Christmas presents for the family. A committee meeting (all welcome) ends the month on Tuesday 30th at 8pm.

We are always keen to meet new parents/carers. We have a range of toys to suit children from birth to 4, craft activities, music sessions and refreshments (new beakers for the children courtesy of the Railway Tavern Social Club) and occasional subsidised trips out. If it sounds like your cup of tea, then join us on Mondays 1.30pm-3pm and Wednesdays 10am-11.30am at the Wesley Hall, School Road. It only costs 80p per session and your first visit is free!

**For more details please contact Alex Bartholomew (244692) or Elizabeth French (244229).**

### ELMSWELL PTA BONFIRE NIGHT

It is hard to believe another year has passed but is indeed Bonfire Night again. This year Elmswell Primary's Bonfire Night will be November 3rd with the Bonfire being lit at 6.00pm and the fireworks starting at 6.30pm (show lasts approximately 20-25 minutes, plenty of time to still make the Bury show!)

Entry is by donation. **All** the proceeds from this event go directly to school funds so please come along, watch the show and buy a hot dog.

## **Around and About cont'd., pg3**

Elmswell Community Primary School is proudly sponsored by: JW Diaper & Sons Poultry, Harris Quality Bacon, Manvers Triumph, John Rannoch Foods, H C Wilson Transport, and Village Homes. When you have a choice, we ask that you support these local companies.

We will have many events planned in the coming year that we hope to make village events, further reinforcing the bond between school and community. Please watch this space for more details.

### **W.I. SHOPPING TRIP**

The bus will leave Bakers yard at 9.10am on Thursday 20th November 2001 for Norwich. Then leave Norwich at 4.30pm on return journey. Cost £5 each.

### **ELMSWELL BAPTIST CHURCH**

Firstly, an apology this month. I know there was a queue at our tent this year at the fete, all waiting in anticipation for the arrival of the Chippendale/Beppe look-alike. Unfortunately I had to work this year, so was unable to attend. I'm sure the free balloon

compensated for my absence.

Our church was also open all day for the cycle ride this year, although the number of cyclists were down slightly from other years, we still had over 150 pass through the doors (it didn't half mess up the carpet).

Good news as well in September, our Trailblazers Club had 4 new children join. We are so pleased to see you (even though you do support Blackburn Rovers). We also had another family join us for a couple of services this month, and as I write this our thoughts are with you at this sad time. Our Trailblazers is growing, and we now have over 7 children attend, this may not seem many, and we still have room for more. It's open for an hour at 9.45am each Sunday and we cater for two groups of children ageing from 4-8 and 9-13ish. Give us a look, before we get to full.

We welcome any children to this or to our weekly services at 11am. If you would like to join us, please don't feel you have to leave your family at home. We will cater for their needs (mostly being excitable, loud, and wanting to be creative with glue), whilst you can sit and enjoy the service.



## **TaxAssist Direct**

**The Tax and Accountancy Service for  
Small Businesses and Taxpayers**

Self Assessment, Tax Returns, Annual Accounts, Book-Keeping,  
Employed, Self-Employed or Starting a New Business

For a free initial discussion without obligation call

**Clive Jenkins. Tel/Fax 01359 242284**

## Around and About cont'd., pg5

The Ladies Friendship Group will meet on Monday 8th October 2001 at 7.45pm. We shall also be starting our Alpha Course, (the only one in the village) this month. We should be starting this immanently, after our supper and introduction on 13th, so if you are interested in attending (no commitment), or want to know more phone Tony on 241541.

Finally two more dates for your diary, we shall have our church meeting, open to all who attend here on 23rd October, and we shall be having a meeting on 6th November with regard to a mid week children's club. If you would be interested in helping with this, please give us a look. We shall be having someone called Kevin Moore visit us, who has previous experience in setting up clubs, he shall also be

visiting the school, so look out for him. That's it for October - plenty to do, give us a look, you never know, you might enjoy it. What else have you got to do now the cricket season is over!! - and you don't have to spend time afterwards washing all your whites.

**Mark**

## CATHOLIC PARISH OF OUR LADY, STOWMARKET

### Parish Priest:

Father Denys Lloyd,  
The Presbytery,  
29 Lockington Road,  
Stowmarket IP14 1BQ  
Tel: 01449-612946

### MASS TIMES:

**Saturdays (First Mass of Sunday)**  
Woolpit C of E Parish Church, 6pm

### Sundays

Stowmarket (Our Lady's, Stricklands Road) 8.30am & 10.15am  
Wattisham Airfield Church (first Sunday of each month), 12.15pm  
Needham Market C of E Parish Church (second Sunday of each month), 12.15pm

### Holy Days

Stowmarket (Our Lady's, Stricklands Road) 8am, 10am and 7.30pm  
Weekday Services in the parish are listed at the front of the church at Our Lady's and in the weekly Newsletter. If you are unable to contact Fr Denys and need a Priest in a hurry, please telephone either 01284-754358 or 01473-741975.

The Parish Representative in your area is: Mrs Hilda Jackson: Holly Cottage, Long Thurlow, Badwell Ash IP31 3JB. Tel: 01359-259944.



## Winter Flowering Pansies

£3.50

for a tray of 15

The Wood Yard  
Kiln Lane  
Elmswell

Tel: 01359 242228



## Around and About cont'd., pg7

### METHODIST CHURCH

Our Harvest celebrations were well attended and enjoyed, although very much overshadowed by the dreadful happenings in America. Our thoughts and prayers were with all folk affected, are still with them and will continue to be for a long time to come.

The 'three church' harvest supper was a time of good food and rich fellowship. We have two annual events now looming large. On **October 28th** we have our **103rd Church anniversary** with a service at 10.45am conducted by our Superintendent minister Revd. Ian Wilson, the service will be followed by a church lunch. On the following Saturday **NOVEMBER 3rd** it is our **BAZAAR** from 2-4pm. Please take time to read the advertisement elsewhere in this Magazine, book the date in your diaries, and come

along to support us.

The Exchange Club meets on 16th October, when 'Fred' from Radio Suffolk will be the speaker.

The ladies meet as usual on Tuesdays at 2.45pm, speakers:

October 23rd - Mrs Joyce White :

November 6th - Mrs Jessie Parker :

November 13th - Mr Alan Newcombe.

The Preachers planned to lead our Sunday Services at 10.45am are:

#### October

21 Revd Stephen Yelland  
(Holy Communion)

28 Revd. Ian Wilson  
(Church Anniversary)

#### November

4 Mrs Carol Colton

11 Mr Alan Newcombe

18 Revd Alan Ashton from Newmarket

### NUMARK PHARMACY

Woolpit Health Centre  
Heath Road, Woolpit

NHS and Private  
prescriptions dispensed.  
Pharmacist available to discuss  
your medicines and other  
healthcare matters including  
common illnesses, in confidence.

We stock a large range of family  
and holiday medicines,  
alternative remedies, toiletries,  
babycare, suncare, family planning  
and first aid supplies.

Tel: 01359 242394

Fax: 01359 241975

### ST JOHN'S CHURCH, ELSWELL

Following the terrorist attacks in America, the Church was open on 12 September for a time of quietness and private prayer. The Books of Condolence have been signed by many of the congregation and £90 has been forwarded to the American Red Cross.

Thank you to everyone who has made donations to our Gift Day in response to the letter in last month's Newsletter. Our Harvest Thanksgiving Service on Sunday 30 September was very well attended - the Church was beautifully decorated with flowers and gifts of fruit and vegetables. The Brownies, who as usual had decorated the font, came to the service together with the Rainbows and Guides. The Brownies sang a song about Harvest Time, the music group led some of the hymns and the Choir sang the anthem 'For the beauty of the Earth'.

On 28 October we shall be thinking of the work of the South American Mission

## Around and About cont'd., pg9

Society, one of the organisations whose work St John's supports.

On 2 November at 7.30pm in the Church there will be a concert by students of Mrs Jean Towers and our own Music Group. The Concert is to raise money for six young people from the village who are to visit Mongolia next year.

The Autumn Fair will be held on 17 November at the Blackbourne at 2pm. Please come and support this, one of our main fund raising events for general Church funds.

Then on 1 December Mrs Anne Dyball will be demonstrating flower arrangements for Christmas. Starting with Coffee at 10.30am and ending with a buffet lunch with wine, this promises to be a most enjoyable day. Tickets £6 are available from Anne, telephone 01359 240245. Proceeds to the Church Fabric Fund.

### The Friends of St John's Church, Elmswell

Our Fifth Annual Festival of Art, Music and Flowers was a great success, raising £980 for our funds. The concert on Friday 7 September was compered by Helen Tilney, who with her husband Graham had also arranged the concert which was by members of St John's Church, with a guest soprano soloist - Clare Presland, a

student at Thurston Community College. Items included vocal solos by Clare and by Margaret Hodgson; a violin solo by Karen Godfree and a flute solo by Jo Cromarty with items by 'The Band' and poetry readings by Jean Turner and Jean Folkard. The concert was followed by cheese and wine and a preview of the Art Exhibition - over 120 paintings by local artists.

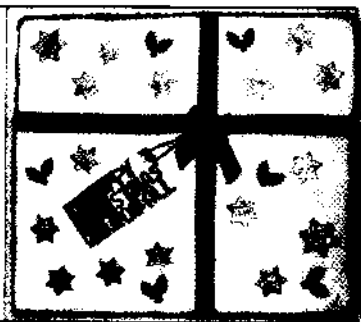
The Church was open for the exhibition on Saturday, when many of the cyclists taking part in the county wide sponsored cycle ride visited Elmswell. The Annual Friends' Service on Sunday was arranged by the Friends' committee, conducted by the Rector and addressed by Mr John Andreassen, who spoke of his time in the village prior to his leaving in 1934. The theme of the service was 'Sing a new song unto the Lord'; Joan Davidson and Karen Godfree read the lessons and the Choir sang the Anthem 'How can I keep from singing?'.

The Friends have donated £2000 to the Church Fabric Fund in the last two months, the proceeds from our recent coffee morning and the Festival Weekend. There are so many people we should thank, it is impossible to name them all, but mention must be made of the support given by the Elmswell Amenities Association and everyone who fetched,

~~ Novelty Cakes! ~~

*Let me create something  
different for Christmas*

Jean Barker ~ 01359 241135





## Around and About cont'd., pg10

carried, arranged flowers, and attended the concert and the service. There was a great feeling of warmth and friendliness in the Church over the whole weekend and the money raised brings us within £603 of the total needed to pay for the work which has recently been carried out on the fabric of the Church.

### Macmillan Coffee Morning

The Coffee morning held in the Church Room on 28 September as part of the Biggest Coffee Morning in the World was attended by 86 people and raised £340 for the Macmillan Relief Fund. Jean Folkard would like to thank everyone who attended, bought items for sale and made donations.

### Bells at St John's

Our Church tower has 5 bells of varying age and condition. Unfortunately the years have taken their toll(!) on both the bells and their supporting frame, and they are no longer ringable.

However, the tower bells are not the only bells belonging to the Church in Elmswell. We also have a set of handbells, originally purchased (we believe) in 1903 "for the use of the young men of the Parish", the intention being that "if some sort of recreation were provided for our young people it is possible we should hear less of village immorality".

The bells were first used in a performance in December 1903, but unless urgent repairs are carried out they will not be able to see their centenary. This resource is one that should be maintained and used by us for the benefit of the village, not only because of their historical importance, but for the immense pleasure they can give.

The handbells have been assessed by

Taylor of Loughborough - to get the set ringing again is going to cost upwards of £3,000. We are therefore looking for volunteers who would be willing to help in fund raising efforts (perhaps you know of an individual or company who would like to sponsor an individual bell?) and/or would like to be involved in a handbell ringing group, once the set has been refurbished.

If you can help please contact Nick or Anthea Smith on 01284 768226.

### Services etc at St John's Church

#### Sunday 21 October

10.30am Holy Communion

#### Sunday 28 October

10.30am Morning Prayer

11.30am Holy Communion

South American Mission Sunday



**Guus Hamel**  
Garden Design  
01359- 244213  
E-mail: [guushamel@aol.com](mailto:guushamel@aol.com)

## Around and About cont'd., pg13

### Friday 2 November

7.30pm Concert

### Sunday 4 November

9.30am Family Service with Music Group

10.30am Morning Prayer

11.30am Holy Communion

6.30pm United Service Fellowship of Churches

In Methodist Church

### Sunday 11 November

8.00am Holy Communion

10.30am Remembrance Sunday Service

### Sunday 18 November

10.30am Holy Communion

Sunday School every Sunday except 1st Sunday in month in Church Room

### St John's Church Floodlighting

A night's floodlighting costs £5 (Please make cheques payable to "ST JOHN'S CHURCH, ELMSWELL")

### October 2001 Sponsorships

1 in loving memory of Thomas Robertson's Birthday

4-5 Anon

6 in memory of Dorothy May Bloomfield

8-12 Happy Birthday Thomas Mitchell. Love Mummy.

17 in memory of our darling daughter Kayleigh Wallace on her 4th Birthday. Love Mummy, Daddy and Brother Kyle.

19 in memory of Percy Pleasance

21 in memory of Ron Comber's Birthday

25 in loving memory of my dear wife Rita Bennett on her Birthday

31 in memory of Roy Clark

All bookings and payments, please, to:- Trevor Sadler, Abbots Warren, Church Road, Elmswell (Tel: 240908)

### PROJECT 2000

The next kneeler meeting will be held in the Church Room on Tuesday 30th October at 2.30pm. Anyone interested in joining this project should contact Pat Catton 242902 or Janet Baker 240229.

### ELMSWELL GARDENING CLUB

Our September meeting always seem to have that back to school feeling about it, but to many of us it's a place where we wanted to be unlike school, and those that stopped at home to watch the football missed a very good night with Peter Fisk and his slides, and as always Peter gave a very responsive and down to earth talk about how to grow vegetables, and how he has personally gone about it, and his experiments with different seeds, to get the best results, even going as far as to breed his own seed to



## FAMILY DISCO

featuring

**"Hot Shots" disco**

**Friday 2nd November**

**6pm - 9pm**

**at Haughley Park Barn**

**Tickets £5 per family**

**In aid of Wetherden Pre School**

**For tickets and more information call  
Sarah 242965 / Alex 244692**



## Around and About cont'd., pg 14

achieve success at various vegetable shows at local, county and national level, no Pink and Fluffy stuff with Peter and he was more than happy to share his secrets, and to further enhance his vast experience he brought along a table full of prize winning vegetables which he offered to the audience at the end of his talk, which were readily accepted. The competition of three Runner Beans gave several members the opportunity to demonstrate their own prowess in this field, the winner being Mrs Maurcen Cruickshank, followed by Mrs Muriel Durham and Mrs Jean Mason in second and third places, and as usual well done to all other entrants.

Now next months talk by Mrs Ford will be on Ornamental Grasses and the competition will be for an arrangement of seed heads, and of course that will all take place at the Exchange Hall in School Road at 8.00pm on October 18th and because the printing of the Newsletter and our meeting cannot coincide, now would be the only time that I can remind you that we hold our AGM on November 15th again at the Exchange Hall. I know that AGM's are boring but it would be nice to see you all there.

### HELPING HAND CLUB

Our trip to the Olde Tyme Music Hall at Felixstowe was truly a stroll down memory lane. So good to hear the good old songs from yesteryear. A great evenings entertainment.

Our Harvest Supper proved to be a happy and most enjoyable evening a large gathering of members, friends and guests enjoyed a superb supper catered for by Crossays Caterers. Sincere thanks must go to Tina and Sylvia for all their hard



work and excellent service. After supper we were left in the hands of two very special entertainers, our good friends from the village, Rosemary and David Oliver. Their fine singing and playing, ranging from Cliff Richard and Tom Paxton, was a joy to the ear and enjoyed by everyone. Many, many thanks to you both from us all.

Hopefully in October we are going to have a speaker from the Health Centre at Woolpit to give us an insight to the every day running of the place.

Until next month, Best wishes  
Stan

### WETHERDEN UNDER FIVE'S PRE-SCHOOL

Yet another year has passed and it has been a great success story. The Pre-school started a slow build up last September, with over half the children taking up the early years class at school. During the year we gained a full class of twenty four children, more than some reception classes. The Pre-school went from strength to strength, we even had a waiting list of children wanting to come to our Pre-school.

In December 2000 we obtained a Grant to help pay for heating and hot water in the kitchen, toilets and children's toilets. There were also areas in the Pre-school which were in need of decorating. Janet Rookard, Lisa and Simon Warren kindly donated their time and painted and decorated the kitchen, hallway and toilet areas, we would like to thank them for all their hard work.

The school employs two members of staff, Mrs Sandra Gidney the Pre-school Leader and Mrs Billie Granger Pre-school Assistant, they have both recently gained their NVQ level III in Child Care and

## Around and About cont'd., pg17

Education. We would like to congratulate them for all their hard work and dedication. In the Summer Term we employed two other members of staff, to cope with the number of children and had our own Granny Mary, a volunteer, who the children enjoyed having around once a week and who worked well with the other staff. A BIG thank you to 'Granny Mary', Mrs Mary Urwin.

The Pre-school has once again lost a number of children to the schools and nurseries, so we now have vacancies available. At present we have eleven children on our register and three staff. As you will agree this is a good adult to child ratio. We also have an excellent ofsted report and can teach your child, numerical, literacy, arts and crafts, social skills how to extend their vocabulary these are amongst a few. If you have a child between the age of 3-5 years we are open on Mondays Tuesdays and Fridays, 9.00am to 12.30pm, other days may be coming available in the near future. Vouchers welcome / £5.00 per session. Visitors welcome via an appointment, due to security reasons. Please telephone Sandra on 07971 827522 for an informal chat or to request a prospectus.

### ELMSWELL DROP-IN CENTRE

The Drop-in centre at Blackbourne is opening its doors once again following the summer holidays break, for anybody in 'year 8' or above.

Initially, it will be on Monday evenings from 7.30pm to 10.00pm starting the 4th November. And, as usual, will extend to other nights to suit the children who attend and of course dependant on adult volunteer helpers.

We are all hoping that with the new wave of youngsters eligible to attend the centre with different ideas, attitudes and parents

or guardians prepared to join in and get to know the children and build a rapport, this could be a successful and enjoyable year. There is also the prospect of a permanent purpose-built centre as proposed by the Parish Council, which if successfully completed will have more useable space, will have a better layout, and with proper facilities. This will then be there for the ever-increasing future generations.

If anybody has any doubts about the centre because of various adverse publicity in the past from uninformed and blinkered individuals, just come along and see for yourselves. There are always at least two adult supervisors in attendance, a few more bods will be welcomed.

**C D Abbott**

### ELMSWELL FOOTBALL CLUB

Club Sponsors: Mirror Group

Newspapers

Warm up top sponsors:  
Energizer

Match Day Sponsors: (Harris  
Cuffaro Nichols) Solicitors  
Old Harlow Essex

First aid sponsors: Euro Food  
Machinery (Elmswell)

Match ball sponsors: Rota-Rod (Bob  
Barter), Travelstop (Elmswell),  
Stowmarket Golf Club, Tulipa  
Landscaping (Elmswell)

1st Team sponsors: Mirror Group  
Newspapers

1st Team Manager: D Scase. Assistant:  
K Hammond.

2nd Team sponsors: Elmswell Fox

2nd Team Manager: B Barter. Assistant:  
S Harrison

'A' Team Manager: J McMillan.

Over 35 sponsors: C G Finch & Sons

Under 14s Sponsors: Abbots Estate  
Agents

Under 12s Sponsors: Allpack



# BRARY – *the beginning of a whole new chapter*

that the naming of the building, 'The Memorial Library,' and the proposed Memorial Garden addressed issues raised over the years. In the light of the enormous success which the occasion marked, looking to the future was very much the watchword.

There was thanks for the co-operation from Suffolk County Council and from the contractors, Seamans of Stowmarket. And praise from all sides for the local staff who had endured sub standard working conditions for far too long.

And there it was...bigger, as promised, brighter, warm and waterproof! With five computer terminals offering the chance of IT training through West Suffolk College (watch this space), automatic entrance doors and flush with fine facilities.

Do we like it? There have been more new readers registered every day since it opened than would normally register in a whole week. We like it. Suffolk County Council are looking to base other village libraries on our design. They like it.

The formalities over, it was time for people involvement and some fun. As part of their commitment to working with the community, the Amenities Association liased with Beyton School to book the services of Brian Patten... very popular as a children's poet and author but widely read and internationally published for more serious work for grown-ups. The date, Friday 5th October, was notified to other local schools. The date came. So did Brian and he was great! Signing dozens of his books brought by fans and reading a selection of his work – some for the many kids who showered him with requests for their favourites... 'We love to squeeze bananas, / We love to squeeze ripe plums, / And when they're feeling sad, / We love to squeeze our mums.' – and a few for the adults.

The finale? The bursting of a tangle of balloons which released the multi-coloured drapery behind which the bold and unambiguous statement announced to the world in six inch stainless steel 3-D glory... 'ELMSWELL MEMORIAL LIBRARY.'

An enterprising and exciting investment in the future. A fitting tribute to the past. An invaluable community resource for many years to come. A clearing house for learning, for leisure, for communication. All of this. Opened with a poet's hope;

*'...that our words might bend grasses,*

*make paths which are both simple and possible,*

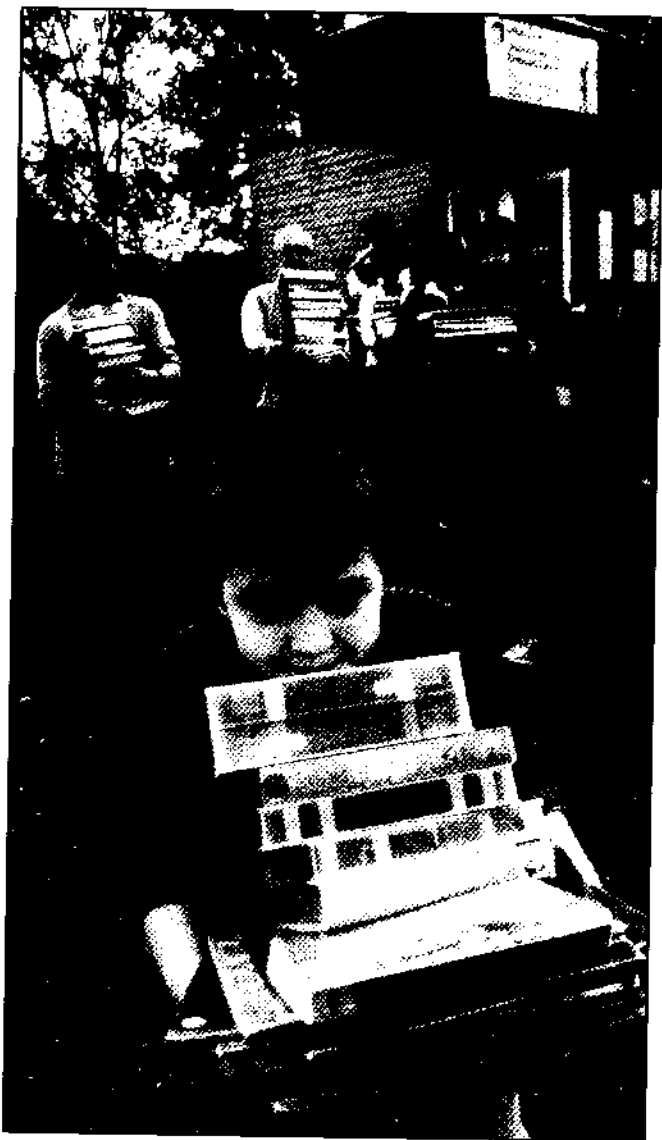
...paths, we hope, into a better future for our community.

# ELMSWELL MEMORIAL LIBRARY

Right up to the last minute, librarian Julie Harrison and her staff at the old library were busy - right up to when the doors closed for the last time and our photo was taken of users and friends eager to clear out the old into the new.

It was all shifted and shelved in a week. The children who had taken part in the reading scheme over the summer holidays were duly feted as important guests - in the new Memorial Library! A fitting acknowledgement of the intention to look to the future.

Officially it wasn't open until 22nd September when the Great and the Good donned suits, said a few words and cut a ribbon. There was praise for the support which the scheme had enjoyed from the community, both formally at some very positive public meetings and less publicly in so many ways. There was acknowledgement of the sensitivity of the scheme, which had meant the demolition of the old hall, and the express hope



# BRARY – *the beginning of a whole new chapter*

that the naming of the building, 'The Memorial Library,' and the proposed Memorial Garden addressed issues raised over the years. In the light of the enormous success which the occasion marked, looking to the future was very much the watchword.

There was thanks for the co-operation from Suffolk County Council and from the contractors, Seamans of Stowmarket. And praise from all sides for the local staff who had endured sub standard working conditions for far too long.

And there it was...bigger, as promised, brighter, warm and waterproof! With five computer terminals offering the chance of IT training through West Suffolk College (watch this space), automatic entrance doors and flush with fine facilities.

Do we like it? There have been more new readers registered every day since it opened than would normally register in a whole week. We like it. Suffolk County Council are looking to base other village libraries on our design. They like it.

The formalities over, it was time for people involvement and some fun. As part of their commitment to working with the community, the Amenities Association liased with Beyton School to book the services of Brian Patten... very popular as a children's poet and author but widely read and internationally published for more serious work for grown-ups. The date, Friday 5th October, was notified to other local schools. The date came. So did Brian and he was great! Signing dozens of his books brought by fans and reading a selection of his work – some for the many kids who showered him with requests for their favourites... 'We love to squeeze bananas, / We love to squeeze ripe plums, / And when they're feeling sad, / We love to squeeze our mums.' – and a few for the adults.

The finale? The bursting of a tangle of balloons which released the multi-coloured drapery behind which the bold and unambiguous statement announced to the world in six inch stainless steel 3-D glory... 'ELMSWELL MEMORIAL LIBRARY.'

An enterprising and exciting investment in the future. A fitting tribute to the past. An invaluable community resource for many years to come. A clearing house for learning, for leisure, for communication. All of this. Opened with a poet's hope;

*'...that our words might bend grasses,*

*make paths which are both simple and possible,*

...paths, we hope, into a better future for our community.

## Around and About cont'd., pg18

### Monthly Draw for October 2001

#### Drawn by Colin

£50	324	O Salmon
£35	36	S Pryke
£25	9	V Perry
£15	106	Sue Smith
£15	254	D Bloomfield

### Results for September

- 8th 1st Team - Wickham Market (Home) Lost 2-1  
Reserves - Whitton Maypole Away  
Lost 4-2. Scorer S Twedle 2  
A Team - Minden 2000 (Away) Lost 2-1. Scorer B Hail
- 15th 1st Team - Saracens (Away) Won 5-3. Scorers T Conway 2, J Clarke, P Farmer, T Price  
A Team - Jubilee 96 (Home) Drew 1-1. Scorer D Scase  
Under 14s - St Johns (Home) Lost 5-1. Scorer D Lynch  
Under 12s - Wetherden & Haughley (Away) Lost 4-0
- 22nd 1st Team - Thurston (Home) Lost 1-0  
A Team - Barrow 2001 (Away) Drew 4-4. Scorers S Church 3, D Scase 1  
Under 14s - Framlingham B (Home) Lost 5-0  
Under 12s - Pulham Lost 4-2. Scorers M Hurrell, C Rutt
- 29th 1st Team - Sicklesmere (Home) (Cup) Lost 3-1. Scorer P Farmer  
Reserves - Bacton Reserves (Home) Won 4-1. Scorers J Irving 3, G Colman 1  
A Team - Black Boy (Away) Lost 4-2. Scorers L Stiff, L Waller

### Fixtures

#### 20th October

1st Team - Murray Rangers Away

Reserves - Saxmundham Sports Home

#### 21st October

Under 14s - Christchurch Away

#### 27th October

1st Team - Stowupland Home

Reserves - AFC Hoxne Away

A Team - Fornham St Martin Away

#### 28th October

Under 14s - Bury Town Home

#### 3rd November

1st Team - St Edmunds 65 Away

Reserves - Benhall St Mary Home

Under 12s - Wetherden Home

#### 4th November

Under 14s - East Bergholt Away

#### 10th November

1st Team - Whitton United A Home

Reserves - Copplestonians A Away

Under 12s - Pulham Away

#### 11th November

Under 14s - Walsham Away

**H Mulley would like to apologise to Tulipa Landscaping for omitting to include their name last month as Matchball sponsors.**

Anyone wishing to join Elmswell Football Club please telephone B Hayward on (01359) 240951.

Training Wednesday nights Grove Lane Pitch

**Compiled by H Mulley**

### KILN MEADOW

Some of you may already know that we have purchased and put down on the site a couple of seats so that you will be able to sit and appreciate the site. This is thanks to the funding from the nest box sponsorship and the raffle held at the Autumn Fayre, so thank you to everyone and we hope you will enjoy using them.

**Alan Thompson**



### ELMSWELL CRICKET CLUB

Sponsored by Manvers Triumph



As our usual scribe is on holiday in Samos, a Greek Island (or is it a Brighton B&B?) it falls to one of us less erudite of mortals to produce this month's column. Not for the first time he had arranged his holiday to ensure he misses the end of season work on the cricket square.

With Doug Reed approaching his final years as a cricketer we are looking at the other clubs or organisations in the village he is likely to join. On the sporting front we have the Football Club. Perhaps he could replace Dick Burch as the oldest recorded player but anyone who lists Kings Lynn as his favourite club has no knowledge of the game! Then there is the Bowls Club but having tried this sport his off white slacks did not go down very well, neither did his bowls. As least he did look young.

He is much too old for the Youth Club and drop in centre. The Gardening Club and Kiln Lane Wildlife Group would be no good as these nature lovers like early morning starts and he would never catch the worm if it were anything like a cricket ball. By joining Mark, the Baptist Church columnist, he could form a comedy duo. Canon & Ball? For obvious reasons the W.I. is out as he could never sing Jerusalem in the showers.

Having ruled out a number of clubs it only leaves the Helping Hand Club where he would be a great hit with the more mature ladies thanks to his youthful looks and boyish charm. Rumour has it they could do with an ex professional bingo caller. He could also seek advice

on aching limbs and pension funds. Oh well it looks like we will have to put up with him for another year or two, body parts and movement permitting. All joking apart we hope (who cares) this column will not offend Doug as his writing skills are obviously needed to bring light-heartedness to the Newsletter. As Doug has a cult following perhaps you would like to meet him personally. He will be available for photos and autograph singing at the Jumble Sale on Saturday 27 October at the Wesley Hall, 2pm and at the Entertainment Quiz at The Blackbourne on Saturday 17 November, 7.30pm.

Turning to the cricket news we were lying second and needed to win our final game against Bushell to gain promotion. Sadly we failed at the final hurdle and ended up third in the table. Maybe actually being able to overcome the weather for a full game was beyond us. However, the season did have a fairy tale ending as the league subsequently decided to promote three teams this year so we shall be playing in the McNeil Suffolk League Division 3 in 2002.

Congratulations to Nigel Greathead, our Club Captain, on his marriage to Denise after the season had ended. Maybe the skipper had his mind on other things during our defeat against Bushell.

The cricket tea has been a topic of conversation since time immemorial and cricketers are being asked to help ensure the long-term survival of the aromatic herb, camomile. However, we are not being asked to use it to flavour the tea but instead the plant conservation charity "Plantlife" are asking clubs to plant the herb on their pitches "where mowing regimes will keep down taller plants and

## **Around and About cont'd., pg24**

mimic the closely grazed areas where the plant was found the past". Despite the lure of an aromatic cushion if you fall over while fielding there is no truth in the rumour that camomile will be grown on our square.

### **Elmswell CC Century Club September Draw**

£15 (80) J Keeble  
£10 (84) E Farmer  
£5 (4) S Proctor

### **YOUTH FOOTBALL Elmswell F.C.**

Training starts Thursday evenings from 11th October at Grove Lane.

Under 10s - 6 till 7pm

Under 12s - 7 till 8pm

Under 14s - 7 till 8pm

Training for the first 4 weeks will be taken by coaches from Ipswich Town F.C., then by a qualified coach every week throughout the season. This is open to any young player who would like to play football for Elmswell F.C.



## **Fraud Squad raids on the Amenities Association**

---

There have been several puzzled enquiries following the recent public assertion from the Parish Council that it was not responsible for the raids on 7th December last.

Furthermore, the Council has requested that the Association provide any documentation which proves that the Council was involved.

The association has, accordingly, forwarded the letter from the Suffolk Constabulary Fraud Squad officer who lead the raids in which he says; 'The complaint was made by officials of the Elmswell parish Council who have a duty to the residents of Elmswell.'

This was backed up verbally by the officer concerned both in formal interview and otherwise when he was clearly convinced that the two Parish Councillors concerned, Cllr David Marriott and another who refuses to come forward, were acting in their official capacity when they made their complaint. He expressed the view that the complaint would not have carried the same weight had it not benefited from what he perceived to be official Parish Council backing.

*The maze on Church Road – opened by the  
Community ... led by Colin the juggler*



## **ELMSWELL IN BLOOM**

Join in the mass planting of crocus bulbs  
around Elmswell Maze

**Saturday October 27th at 11.00 am**

Meet at the maze - bring a trowel -

Crocus bulbs provided

Any enquiries Tel: 240421

### **Setting the Record Straight**

In an effort to put right any inaccurate or misleading reporting in your newsletter, we are bound to point out that the excellence of the fish served on Mondays at the Fox is, in no small measure, due to the unique formulation of the lager batter, not cider, as previously reported. Our thanks to the many fans and aficionados who contacted us pressing for a full and frank admission of our error.

*Letter from Ray Eyres - an Elmswell inhabitant for 75 years*

### "An Epitaph to a Memorial"

**T**he time has come, with the final destruction of our Memorial Hall, to write an Epitaph to an enterprise which as the outcome of the gift of a plot of land for a specific purpose, (ie) a final and lasting tribute to men, sons of this Village who gave their all in not one but two World Wars. The people whose efforts to create a much needed Meeting place in the form of a Memorial Hall, different efforts raised funds for a Hall and a sports ground, by relatives, villagers, and returned ex-servicemen and women. the Doner of the plot of land was a Mr Chamberlayne (Solicitor) the Hall was to a prize winning design by a firm from (Capel St Mary) and of interlocking bricks, the erection was by local labour freely given, and supervised ably by Mr John Knight. Now may I ask, how is it legally possible for a total stranger who came here years later to claim that this was not a Memorial, and was responsible for its demise and destruction.

It is to me unclear how the hall got into the hands of the Charity Commission in the first place, secondly why wasn't the Village informed by them, that its Memorial was to be a sacrifice to ego and a failed bid to get backing from Lottery, for a project that eventually became a cost on the community, and with it a lot of ill will which still exists today!

The village at that time doubled in size, with the building of housing estates, the influx out numbered the original inhabitants this was a method by which the Nazis legally occupied territory. One person became Chairman of the Parish Council, also the so called Ammenities Comm. was formed and behold the same person held the reins, a virtual Dictatorship. I was coopted to serve, but due to continuously. Being put down by the Chair I resigned. I wrote to both the B.F.PRESSs, and the E.A.D.T. on the subject only to be told, "they had a local reporter, this to me was Bias of the first degree. The Newsletter was born and I have every copy since its inception. Strangely in every event that was photographed one face always appeared, a sure sign of self gratification. being an ex serviceman and believeing that ours was a just cause I took it to The Royal British Legion, I had served this Elmswell Branch as Hon. Sec. when the branch was in being here, only to be told that as the word Memorial did not appear in the Deeds, it was not a Memorial. This amazes me, each year I regularly hear "They shall grow not old as we that are left grow old, time shall not weary them or the years condemn at the going down of the sun and in the morning, we will remember them"?

This village has been delt a serious injustice by the influx of people who didnt even know those who gave so much on their behalf, also a generation of selfish youngsters who delight in vandalism, one question is still unanswered Why? did out tribute, have to be a sacrifice.

A new Library has been built, a much needed addition to our village it is to have a memorial garden, this to my mind does not represent the original concept as this is built on what was formerly a Bowling Green given to the Club by a Mr Kay, Gents hairdresser, and late of Harrods of London. The Memorial Hall site Formerly tennis courts was a separate entity.

One Legal Question remains, I believe that War Memorials are the responsibility of the local authority, this being the case why? have we lost our Memorial.

You may say these are the rantings of an old man, my answer is that having served Five years in the R.A.F. and helped to obtain funds for, helped to construct I feel I have a right to vent my views. One thing is certain, given the opportunity to start afresh, even if I was young enough I wouldnt lift a finger to help, for fear of a wolf in sheeps clothing and abetted by the influx of people totally ignorant of the true facts.

Now to Fallen Comrades, R.I.P.

By the way I wonder What happened to the fund left over from the Hall wich should have gone toward a sports field?

*Letter from Neil Thomson of Farm Meadow*

### **Quality Conservatories**

**T**he above Company has been advertising in the Elmswell Newsletter regularly for some time. I have strong reason to believe that the individual who runs this company maybe trading under false pretences as he has left the area and is no longer contactable. Because of this, I would advise any new potential customers not to contact Quality Conservatory's and certainly not to send any money.

If you have bought or have had any dealing with this company would you please call me on 01359 241918 as I am preparing legal action for breach of contract. Trading Standards have already been notified.

**Monica L. Carlin** MSSCh. MBChA.

**Ruth E. Carlin** MSSCh. MBChA.



**Qualified Surgical Chiroprodists**

Registered Members of the British Chiroprody Association  
Surgery & Visiting Practice

Langdales', The Green, Woolpit, Suffolk. IP30 9RQ.

Tel. (01359) 241731

# GREEN MATTERS...

The news is not good for those who like their greenspace and their Access to it.



The long running battle to stop a householder blocking up a claimed footpath to extend his garden off Wetherden road has been lost. The Inspector, who held a public enquiry on 31st July, at which the village made its case for the reinstatement of a path they had known and used for as long as they could remember, has decided that the path is not a public right of way.

The complex arguments by which Suffolk County Council, in support of the community's claim, sought to reclaim the path hinged upon a 'Common Law' case requiring evidence of evidence of public use between 1970 and 1989 and of the landowner having allowed such use. The Inspector concedes that members of the public did use the route as of right and without interruption for that period. However, for part of that time the land was mortgaged. The bank would have had to be party to any agreement to dedicate the right of use as a footpath, and this was provably not the case. The effective time span for proof of public use as justification for dedication is, therefore, reduced to five years. The Inspector was satisfied that, for those five years, the owner did not know that the public were using the path and therefore could not have been 'allowing' such use. It follows, therefore, that he had no intention to dedicate the path as a footpath and the case falls.

The acknowledged importance of the route since the 16th century, its role in marking ancient boundaries, the effective cul-de-sac created for the short stretch of Footpath 9 which does legally exist from the railway towards Wetherden Road, the existence of a County Council footpath finger post and the testimony of many users from the community were all swept aside by the ruling.

To access the footpath network from Wetherden Road walkers must now risk the traffic for over a hundred yards at which point they are, for the moment, allowed permissive access across set-aside land.

Thanks are due to all who tried to salvage this important piece of our countryside and historic heritage for future generations.

Less unexpected, but no less depressing, is the news that the Suffolk County Council Regulatory Committee has decided to accept the conclusion of the Inspector who, following an earlier Enquiry, has advised the Council to reject the application for registration as a Village Green on land at Pightle Close, made by Rex Durham and widely supported by the community. The Open Spaces Society is advising on the viability of an appeal. Your newsletter will keep you informed.

---

## PARISH COUNCIL

---

The October meeting took place at Blackbourne on 15th attended by 14 members of the public and the following items of interest were among those discussed;

### **Play area**

Vandalism over the past year to the play area at Crown Mill has not been addressed and there is the possibility that the facility will have to be closed on grounds of health and safety.

### **Derelict vehicle**

The burned out motor car on the car park at Blackbourne which has caused some concern is to be removed.

### **Rats**

The infestation of rats at the allotments which was drawn to Council's attention prior to the September meeting is soon to be dealt with, competitive quotes for the work having now been obtained.

### **Warren Lane pavement**

The scheme to provide a footway from Church Road to Warren Close down Warren Lane which was developed by the previous Council administration has been revived by Suffolk County Council who are willing to give it priority in their programme should the current Parish Council so wish. Councillors agreed to take the idea up again.

### **Footpath 9**

The status of the apparently dormant scheme to develop Footpath 9 and adjacent footpaths at Eastern Way to allow access to the footpath network from the housing estate was raised by Cllr Feeney who chairs the relevant advisory committee, the Environment Working Party. Progress is delayed due to the Council's solicitor having, it was said, ignored correspondence.

### **Churchyard grass cutting**

The grant to St John's Church towards the cutting of the grass in the churchyard will not, as requested by the volunteers who carry out the work, be increased from £75 to £100.

### **Planning matters**

Cllr Burch suggested that the weight of planning matters on the agenda was detrimental to the monthly meeting which has so much other business to attend to and which is limited to 2½ hours. He proposed that these matters be adjourned to a Planning Committee meeting. Chairman Ronald Curry argued that this was impractical given the availability of Councillors and venue and

the proposal fell.

- 1) Councillors voted to oppose the erection of a house at Windrush, Ashfield Road, as being an overdevelopment.
- 2) Councillors voted to oppose the proposal for 5 industrial starter units at Grove Lane on the grounds that all service traffic would have to come through the centre of the village.
- 3) Councillors had no objection to plans for development at Holly House, Warren Gate, to Glendinin, Oak Lane or to 60 Bennett Avenue.

### **Emergency expenditure**

In the light of recent concerns expressed by Councillors and others regarding the use of powers which permit three Councillors to agree expenditure on an 'emergency' basis without prior reference to Council, Cllr Reed was successful in proposing that the calling for such transactions be reduced to £500 on any one item and that a full report of the expenditure together with the reason for it being incurred are presented to the next Council meeting.

### **Daytime meetings**

Cllr Mrs Feeney proposed that no Parish Council meeting should take place before 6.00pm. This was in response to a recent attempt to hold an afternoon meeting which, although it had failed due to lack of Councillors able to attend, had caused public concern. She argued that potential Councillors might be discouraged from standing if they thought that meetings might be called during the working day. Cllr David Marriott pointed out that meetings were held for Councillors, not for the public who merely have a right to attend. Cllr Ronald Curry pointed out that most people's jobs were flexible enough to allow time off during the day. The proposal fell.

### **Public access**

Cllr Reed proposed that the opportunity for the public to speak at the end of each meeting, prior to 'Any Other Business' should be reinstated as a valuable opportunity to obtain feedback from the electors. He was supported by Cllr Birch who pointed out that it was the public who empowered Councillors and it was their money which Council was spending. Cllr Clark remained adamant that members of the public are entitled merely to attend, and that any opportunity to speak is a privilege. Despite Cllr Reed reinforcing his case with a plea for the public to be viewed by Council as neither a threat or a problem, the proposal fell.

### **Council representatives**

The Council having failed to elect representatives to various bodies at the Annual meeting in May, Cllr Reed proposed that the omission be rectified. This was agreed, but the process was adjourned owing to lack of time following the lengthy discussions on planning matters.



### **Blackbourne - public meeting**

Cllr Mrs Feeney proposed that a public meeting be held to discuss Council plans for development at Blackbourne. She pointed out that it is the public's money which is involved and that she felt it better to consult rather than present a package with no reference to the funders. Chairman Curry argued that Council is not in a position to hold such a meeting and, anyway, has adequate means to put its plans across should it see fit to do so. He suggested the Council web site as an example of how this might be done. Councillor Reed argued that things had moved on since the Village Appraisal and that certain elements of the proposals have no reference to that document anyway. He felt that engaging the people in a dialogue was the way forward. Cllr Marriott pointed out that the public isn't interested anyway, citing the fact that no-one has written to the Council seeking information on their plans. The Council is elected to decide and that is what it should do. The proposal fell.

### **Grants**

Little Elms Pre-School was granted £257 for equipment. A request from Roy Finch for funding towards the organisation of next year's Carl Finch memorial events, the proceeds of which go to the Woolpit Health Centre, was turned down.

The Lunch Club was granted £200 towards weekly transport costs to Woolpit. However, Cllrs Marriott and Clark argued that, given their previous experience with this organisation, the money should not be given all at once. It was decided to make the money available £40 at a time over 5 months.

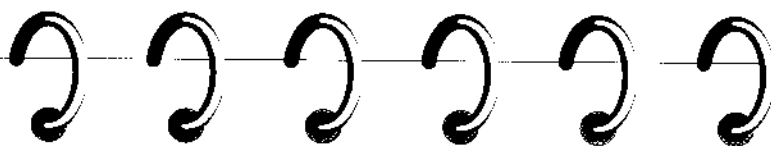
Cllrs Reed and Feeney argued, for a coherent policy on grant aid as suggested in a paper presented by Cllr Reed some months ago but never brought before Council.

### **Adjournment**

Owing to the pressure on the agenda imposed by the inclusion of so many planning applications and the recently adopted rule that meetings last no longer than 2½ hours, the last two items on the agenda were adjourned and the meeting closed at 10.00pm. No date was fixed for the next meeting and the outstanding items were not referred to any subsequent meeting.

### **Next meeting**

The next scheduled meeting should take place on 19th November at 7.30 in the Blackbourne. Only the legal minimum of three days notice, including Saturday, are likely to be given under recently adopted procedures, so notice of that meeting should be posted on Wednesday 14th November at the Co-op notice board.



## What's On in Elmswell ?

To be included in our events diary make sure you send separate notification of your announcement.

### October

- 24 Tempest Photos, Wesley Hall, 9.30am-11.30am, Elmswell Toddlers
- 27 Jumble Sale, 2pm, Wesley Hall, School Road, to raise funds for Elmswell Cricket Club
- 28 Craft Fair at the Blackbourne, 10am-4pm
- 30 Committee Meeting, 8pm, Elmswell Toddlers (244692)

### November

- 2 Concert in St John's Church, 7.30pm
- 3 Methodist Church Bazaar, 2-4pm, Wesley Hall
- 7 2pm. The Old Telephone Exchange, Elmswell Exchange WI, Annual Meeting. Speaker Mr Copping, topic British Birds. Competition animal photo
- 11 St John's Church, Remembrance Sunday Service, 10.30am
- 15 E.M. History Group, 7.30pm with Clive Paine
- 17 St John's Church Autumn Fair, 2pm at the Blackbourne
- 17 Elmswell Cricket Club: Entertainment Quiz, 7.30pm, £2 per person, max. 6 per team
- 24 E.M. History Group, 10am, Tour of St Mary's Church, Woolpit with Clive Paine

November continued

- 29 E.M. History Group, 7.30pm with Clive Paine
- 30 Little Elms Christmas Fayre, 2.30-4pm in the School Hall

### December

- 1 Flower arranging demonstration in St John's Church, 10.30am
- 4 Christmas meal out for Toddler Adults, Elmswell Toddlers
- 5 2pm. The Old Telephone Exchange, Elmswell Exchange WI, Christmas Party. Competition homemade Christmas Tree decoration
- 6 E.M. History Group, 7.30pm with Clive Paine
- 13 E.M. History Group, 8pm, talk by Dr Pat Murrell, 'A Victorian Christmas'
- 16 Elmswell Toddlers Christmas Party
- 19 Elmswell Toddlers last 2001 session

### January

- 2 First Toddlers session of 2002

*Tell us more -  
Tel 241841*