

Seventeen years of Parish Record.....
..... Community News and the Community's Views



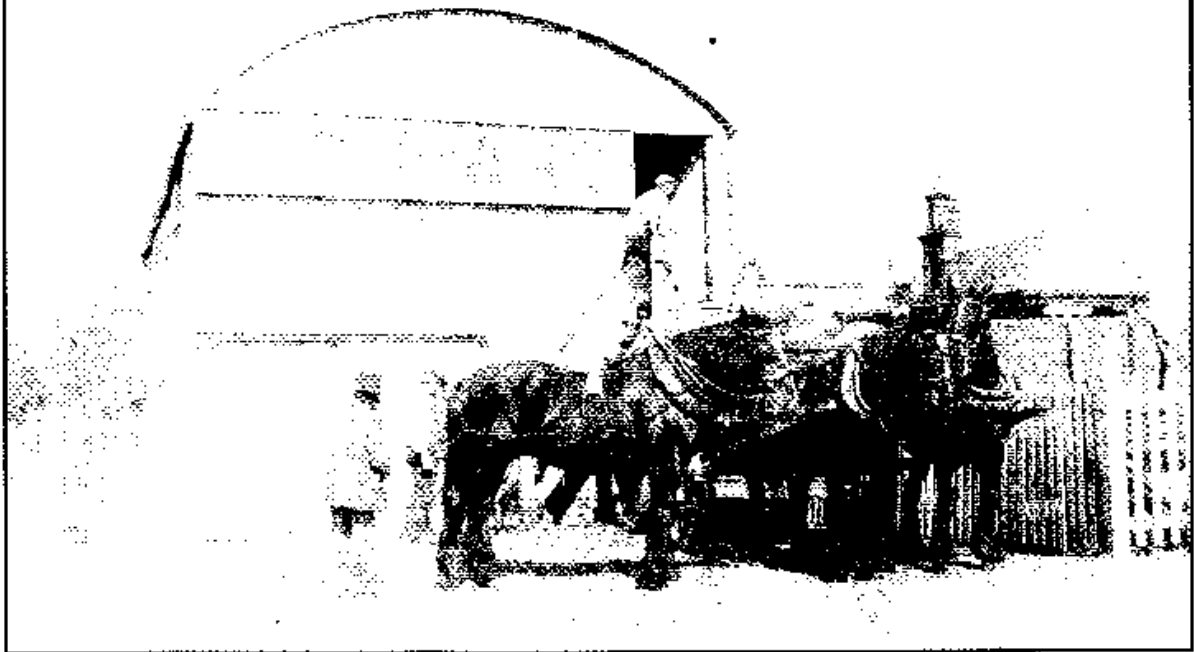
The ELMSWELL Newsletter

APRIL 2002

..... Your Parish Matters

a little historic character ?

see page 30



**Published by the Elmswell Amenities Association Reg. Charity No. 304879.
Delivered free to every household and to businesses in the community.**

A volunteer enterprise entirely supported by advertising.

PLEASE SUPPORT OUR ADVERTISERS.

**This Month's
"COMMENT"****This month's talking
point is raised by
Elmswell Primary
School Governors**

On the evening of March 13th, one or more people saw fit to vandalise Elmswell Primary School property. While we on the school governors find this incident completely maddening, we must ask ourselves (and you) several questions. First, do you, the general public realise that it is YOUR money that is being spent to repair the damage done to the property? Your money that you pay in taxes that is attributed to the school is being spent to purchase paint remover and sanding equipment to repair the damage. Had this not been the case, that money could have been spent on new books, new play equipment, new anything. This could have in fact been the book that your child needed, the play equipment you wanted for the school or any other countless items that could have made your child's life a little richer.

Second, how could children possibly have been out, unsupervised, allowing this to happen? Do we keep such loose supervision on our children that they have the time to commit crimes unbeknownst to us? What does this say about us as parents? Do you know what your children are up to and where they are?

We understand that these are strong words, in fact we are counting on you finding them upsetting. We want you to get angry, we want you to open your eyes and see that these small seemingly 'kids crimes' are in fact criminal acts. They are against YOUR PROPERTY. How many times does this village have to be abused before it begins to get fed up? The local police feel that they can do nothing about local petty crime. If this becomes a neighbourhood that is rampant with crime, our property values go down, our taxes go up and then what happens?

Do we want this village to look like an inner city gang has moved in? Do we want graffiti all over the walls, up and down the streets, all over the bus shelters, in every place the eye falls? How many times does the library have to be broken into before we get tired of paying to replace it?

From this point forward, if you are caught vandalising any school property, we will ensure that you are prosecuted to the very fullest extent of the law. We hope that this results in greater community awareness that it takes a village to stop such blatant acts. We will not tolerate them and neither should you.

YOUR COMMENT INVITED... If you have a comment, a view, a statement - something to say about anything of concern to Elmswell - share it with our readers via the 'Comment' column or our 'letters to the Editor' feature c/o Goblins, Station Road Industrial Estate. Please include your name and address and a telephone contact number - our next deadline is 15th May.

The deadline for the next issue is 5.00 p.m. on Wednesday 15th May 2002. Copy to Goblin's office on Station Road Industrial Estate or contact our Editors: Jean Barker 241135 or Peter Dow 241841. The Amenities Association, which publishes the Newsletter, will try to find space for all contributions, regardless of any point of view expressed, if space permits and providing that they are legal and that the writer's name and address are included.

Any views expressed or implied are not necessarily condoned or supported by the Association which offers, in the Newsletter, an impartial service to the community.

Advertising at the following rates. Please let us have an invoicing address with your copy:

Repeat ads - run for 6 months or more - per issue:

¼ page £15 ½ page £20 Full page £30

One off ads:

¼ page £18 ½ page £23 Full page £35

Payment strictly in advance.

Charitable, non-party political community groups based in Elmswell:

¼ page £8 ½ page £11 Full page £16 Front Cover £22

Out of Village Advertisers

Repeat ads - run for 6 months or more - per issue:

¼ page £17 ½ page £22 Full page £33

One off ads:

¼ page £20 ½ page £25 Full page £38

N.B. Photographs £10 extra.

**Classified Ads: 30 words maximum
£5 cash with order.**

Around and About ...

ELMSWELL F.C.

Club Sponsors

Mirror Group Newspapers

Warm up top sponsors

Energizer

First Aid Sponsors

Euro Food Machinery (Elmswell)

Match Day Sponsors

Harris Cuffaro Nichols (Solicitors Old Harlow, Essex)

Summer School Sponsor

Wells Stitched Embroidery

1st Team Sponsors

Mirror Group Newspapers

2nd Team Sponsors

Elmswell Fox

Match Ball Sponsors

Rota-Rod (Bob Barter)

Travelstop (Elmswell)

Stowmarket Golf Club

Tulipa Landscaping (Elmswell)

1st Team Manager

(Joint) A Garnham, T Price

2nd Team Manager

B Barter, Assistant K Hammond

(A) Team Manager A McMillan

Under 13 Sponsors Abbots Estate Agents (Manager P Case)

Under 12 Sponsors Allpack (Manager S McCreesh)



Under 10 Sponsors Village Homes (Manager N Kerry)

Over 35 Sponsors C G Finch & Sons

Monthly Draw for March

Drawn by D Scase

No 335 D Long £50

No 374 T Warby £35

No 130 D Piggott £25

No 111 B Hayward £15

No 210 L Waller £15

Results to hand since last Newsletter

First Team

Ipswich Exile, Away, Lost 6-2, Scorer D Hutson 2.

Somersham, Home, Lost 4-1, Scorer D Hutson.

Res

Needham (B), Home, Lost 4-3, Scorers J Irving 1, A Ford 1, J Clements 1.

Dennington (Cup Semi-Final), Lost 3-0.

Ipswich Postal, Away, Lost 10-4, Scorers D Hutson 1, J Irving 3.

Saxmundham, Home, Won 5-2, Scorers G Coleman 2, T Birch 1, S Warby 1, L Stewart 1.

Compiled by H Mulley
(01359) 240889



TaxAssist Direct

The Tax and Accountancy Service for
Small Businesses and Taxpayers

Self Assessment, Tax Returns, Annual Accounts, Book-Keeping,
Employed, Self-Employed or Starting a New Business

For a free initial discussion without obligation call

Clive Jenkins. Tel/Fax 01359 242284

Around and About cont'd., p23

ELMSWELL CRICKET CLUB

(Sponsored by
Manvers Triumph)



It's now just a little over two weeks to when eleven finely-tuned, lithe, supple young men comprising that well-oiled cricketing 'dream team' take to the field. But forget about the opposition...what about our lads? Well, we're almost starting to think about toying with the notion of possibly getting vaguely fit...sometime soon. It's a moot point, much discussed with partners and other sceptics, just how fit you need to be to play cricket but it's probably fair to say that you need to be a great deal fitter than we are.

Most of the time a village cricketer will regard his body with a combination of shame and resigned amusement but about now you feel almost sorry for it. It has no idea what's in store for it. Having over-wintered in some quaint Elizabethan cottage (rented from our skipper, no doubt) and/or been mollycoddled in the warmth of "The Fox" it will, within days, be called upon to bend down and retrieve passing cricket balls at speed. Then it'll be forced to run 22 yards (don't know what that is in Euros) at full pace, spin round and run half-way back down the pitch again before the other batsman finally shouts "No!!"...and scramble back to avoid being run out. It won't like it and, quite frankly, isn't up to it. What to do? Panic is good. Some players institute rigorous Schwarzenegger-like fitness routines, only to quietly abandon them a few days later. "Life's too short..." will be the explanation "and it'll be even shorter

if I keep attempting twenty press-ups every morning." So, instead of getting fit, Elmswell CC arranges some nets! But what's the point? Our bowlers don't try to rediscover line and length because (a) they never had them in the first place; and (b) they're too busy trying to decapitate team-mates who upset them last season. Batting is an exercise in intimidation during which you're quickly forced to confront your limitations. So, first, it's the quick drink to steady the nerves, then time to change and the first grim whiff of that curious odour of sweaty underwear and Ralgex that characterises the well-patronised changing room. A few deep breaths, a mild coughing fit and out to join the players who are trying to remember which end of the bat to hold. Cricket is a game of confidence. I tend

Wetherden Under Fives



Pre school (age 3-5) and
Rising 3's (age 2½-3)

Open:

Mondays, Tuesdays,
Thursdays and Fridays
9.00am - 12.30pm

A secure, happy place where learning to socialise, share and develop is fun.

We accept nursery grants.

Contact:

Sandra Gidney 07971 827522 or
Sarah Paczy 01359 242965

Around and About conf'd., p25

to think the only sure-fire way to maintain that confidence is never to play it. First ball anyone (and I mean *anyone* - even the likes of Farmer or Newman) bowls to you in a pre-season net is always on a perfect length, as straight as Charlton Heston, is too fast, swings viciously at the last minute and reduces the stumps to matchsticks. By now, you're wishing you could bat as well as Devon Malcolm or Ben Whatling, yet alone Brian Lara. After 10 minutes in the nets you've been bowled fifteen times, and notionally caught in the slips a further three or four times. You haven't moved your feet (not that Wink ever does), you're not thinking fast enough, your reactions are shot to hell and you can't even remember the basics (whatever they were). You relearn what you've learned

a hundred times before - in that great world of cricket rankings you might reach 954,672...at a push.

Later...you drink too much and wonder whether you might take up something more competitive like backgammon or curling. The following morning, a vast new aggregation of chickens comes home to roost when you awake up to find rigor mortis has set in. Muscles are screaming at you, some in a language you didn't know they knew. The time's come to get one of those chair things advertised by Thora Hird, but short-term it's a Radox bath and more drink to ease away the pain. So what do we get from nets? Just a profound sense of our innate inferiority, a chronic hangover and an inability to walk without assistance for at least four days. And we do this for fun!

So why not come and join us... **Nets at The Blackbourne on Sunday 21 April from 2.00pm.** Failing that, if you'd like to know what alternative comedy is really about, then come and watch one of our games - see "What's On In Elmswell" elsewhere in this issue.

Doug Reed, Club Secretary
(Tel: 241009)

Elmswell Parish Council

Require A Street Cleaner

9 hours per week during school Term time.

14 hours per Week during School Holidays.

Rate of pay is £4,80 per Hour.

Please apply in Writing to
Peggy Fuller- Parish Clerk.

C/o. St Johns House,
Church Road,
Elmswell,
Suffolk, IP30.9DY.

or Telephone/Answerphone-
01359 244134

CLASSIFIED ADS

STEAMERS IRONING SERVICE - Do you hate the weekly ironing? Or simply don't have the time? Phone Steamers Ironing Service 01359 242369.

Do you need a **BABYSITTER**. Reliable and experienced. Phone Emma (Mob) 07761 931466; (Home) 01359 241278.

Around and About conf'd., pg7

Elmswell CC Century Club February Draw Result

£15 S Proctor (No. 4), £10 to M Newman (62) and £5 to D Greathead (116).

March Draw Result

£15 M Schofield (36), £10 to S King (23) and £5 to R Abbott (39).

KILN MEADOW UPDATE

Spring is now definitely with us and the nest boxes on Kiln Meadow are showing signs of activity. There are currently 9 boxes containing nests in one form or another. The most unusual this year is a Blackbird that has managed to squeeze itself into one of the boxes.

If you are one of the lucky ones who has managed to sponsor a nest box this year and you have access to the internet then you can check on how your nest box is doing by looking at www.kilnmeadow.uni.cc. This will take you straight to the nest box website or you can get there from the link on the birds page of the Kiln Meadow website at

www.kilnmeadow.btinternet.co.uk.

Yes, that's right, we now have two websites up and running for Kiln Meadow.

So far since the nest box website was set up in January we have had 70 "hits". Please keep on "hitting" us as we intend to keep the nest box web site up to date on a weekly basis so that you can see what's happening.

On a final note please do not investigate any of the nest boxes on site. This could lead to the adult birds deserting the eggs or young.

Alan Hall

CATHOLIC CHURCH OF OUR LADY, STOWMARKET

Parish Priest:

Father Denys Lloyd
The Presbytery,
29 Lockington Road,
Stowmarket IP14 1BQ
Tel: 01449-612946

MASS TIMES:

Saturdays (First Mass of Sunday)

Woolpit C of E Parish Church
6pm

Sundays

Stowmarket (Our Lady's, Stricklands Road) 8.30am & 10.15am

Wattisham Airfield Church (first Sunday of each month), 12.15pm

Needham Market C of E Parish Church (second Sunday of each month), 12.15pm

Friends of St John's Church Elmswell

invite you to an
ORGAN CONCERT
by **JOHN COOPER**

M Mus., FRCO(CHM), ARCM

in St John's Church on
Friday 17 May 2002
at 7.00pm

Tickets from J Folkard (242099)

& Committee Members
or pay on the door

Refreshments

Everyone Welcome

Around and About cont'd., pg9

Holy Days

Stowmarket (Our Lady's, Stricklands Road) 8am, 10am and 7.30pm (except Ascension Thursday 7pm)

Weekday Services in the parish are listed at the front of the church at Our Lady's and in the weekly Newsletter. If you are unable to contact Fr Denys and need a Priest in a hurry, please telephone 01284-754358.

The Parish Representative in your area is: Mrs Hilda Jackson, Holly Cottage, Long Thurlow, Badwell Ash IP31 3JB. Tel: 01359-259944.

BRITISH RED CROSS SOCIETY

Can you help

This charity supports the elderly and disabled of all ages in Suffolk.

It also contributes to humanitarian works and aid throughout the world.

Please will you support the Red Cross by helping with a collection from 5th to 11th May this year.

Please contact Judith on 01359 258600.

ELMSWELL BAPTIST CHURCH

Thanks to all those who took part in our family service on Easter Sunday. A great time was had, wrapping people up in loo rolls (Anns was the best), exploding balloons, and drawing pictures. I can promise you we did tell the Easter story, in a way in which enthralled both adult and child alike - I have to say all that because I did it.

Our Children's club on Tuesdays now has a name, when it was put to the vote it was decided upon CU at the CU club. Thanks to those that thought up the name, drew the poster, and come along every week. We have just planned the next term's programme, which will take us up until the summer holidays. You are in for a great time, with a varied programme that will include games, puppet shows, kite making, outside activities (Summer's coming), a bird night (Dad's not invited) and a 'pop idol' night.

If you would like to know more contact Tony or turn up at 6pm and join in the fun, don't take our word for it, ask those that go.

Our weekly meetings carry on throughout April with something for everyone - Monday 13th May the

~~ **Novelty Cakes!** ~~

You create the idea - Let me create the cake!

Free Delivery within Elmswell

Jean Barker ~ 01359 241135

Cartoons ✓ Sports ✓ Animals ✓ Hobbies
Anything!...



Around and About conf'd., pg10

ladies will meet up at 7.45 for their monthly programme; every Tuesday we have our CU at CU club for anyone aged 4 - 13 from 6 - 7.30pm; on Wednesdays our Alpha course at 7pm; on Thursdays our home groups and on the first Saturday of each month our working party. If you can't fit that in then on Sundays we have a Trailblazers club for children at 9.45am for the early risers, and then at 11am our weekly services.

You must find something there that you'd enjoy, give us a look, we try not to scare too many off.

Look out next month for another alteration in our Church, it's something that will involve stripping, laying down, raising the temperature, and enhancing our appearance - more next time (if they let me write this column

anymore).

On Sunday 5th May after our service we shall be meeting up with our friends from St. Johns, for a farewell meal with John Perrott and his wife. It will be sad to see him go, we have enjoyed his presence at a variety of our services, he has always encouraged us in all we do and we shall miss him greatly. Have a long and happy retirement. Only another 29 years until mine, I know, I don't look that old -

See you soon.

Mark

ELMSWELL TAVERNERS F.C.

On Sunday 21st April the Elmswell Taverners F.C. make their third successive visit to Bury Towns "Ram Meadow" where they will be playing in the Bury Sunday League 2nd Division Cup Final. Kick-off will be 2.30pm.

Their opponents will be Felsham & Gedding who, like the Taverners, will be looking to complete the double.

The Taverners are currently top of the 2nd Division, 2 points ahead of Felsham; both teams have just 1 league game remaining.

That game just happens to be Taverners v Felsham again. It will take place on Sunday 28th April at Grove Lane playing field, kick-off at 10.30am.

Should the Taverners win both games it will mean that they have done the double in the 4th, 3rd and 2nd Divisions in successive years, something that no other team in the Bury League has accomplished.

Also this season the Taverners had a good run in the Suffolk County Sunday Shield, eventually losing 0 - 1 to

ELMSWELL MILLENNIUM HISTORY GROUP

AN ILLUSTRATED TALK

**'TIMBER FRAMED
VERNACULAR HOUSES'
(13TH - 17TH CENTURY)**

BY JOHN WALKER

8.00PM THURSDAY MAY 9TH
ST JOHN'S CHURCH ROOM

MEMBERS £1.00
NON-MEMBERS £2.50
EVERYONE WELCOME

ENQUIRIES:
MAUREEN DOW 240390

Around and About cont'd., pg13

Kesgrave Athletic in the Quarter Finals.

The team managed by Bob Rice have played some very good football this year, in 17 league games they have scored 84 goals and only conceded 17. This has been achieved with the help of the great goalkeeping of Adam Lomax and the rest of the players: Shaun Smith (Captain), Matt Warren, Mike Game, Darren Cooper, Dean Prewer, Marcus Smith, Andy Mulley, Marty Royal, Dean Thomas, Ben Haile, Ashley Stiff, Paul Farmer, Peter Hughes, Paul Swallow and Michael Peachey.

ELMSWELL GARDENING CLUB



It was nearly a full turnout of the membership that came along to the Library on the 21st to hear Mr Steve Coghill from Otley College, speak and demonstrate the intricate art of plant propagation, and as is usual with Otley tutors there was great hands on and audience participation about the whole evening, and like all complicated procedures a skilled hand makes it all look so simple and easy, with a variety of leaf cuttings from Bertolonia and Stiptocarpus, and Notch and Crown grafting being a more commercial function, then of course there is the complexities of Budding, a procedure very much in use in Rose Nurseries, and last but not least there is the method of propagation by the division of roots with a spade which is more in keeping with my own talents, but all second nature to our speaker.

Last month I told you all where we are going on this years outing and the prices, so this month it's a Hurry Hurry

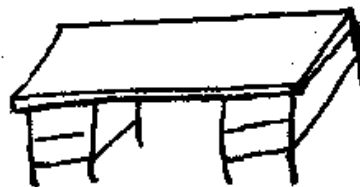
get your seat booked as word is getting around, and we are filling up fast, but should you have missed it in last month's issue we are going to Hever Castle in Kent, for the all inclusive price of £16.50 for Adults and £16.00 for Senior Citizens.

July 21st seems a long way off, but believe me it's not when it comes to organising things, so if you are going to open your garden, and I sincerely hope you will as we need as much support as we can get, would you let Mr John Spanton know by the end of May.

Last month's competition winners were Mrs Jean Mason in first place, Mrs Ruth Armstrong second and Mrs Anice Webb in third place, and well done to all other entrants.

DESKS FOR SALE

3 Modern 'keyhole' desks



2 - 4'3" x 2'6" (1030 x 75)

£20 each

1 - 6' x 2'6" (1080 x 75)

£25

delivery arranged

**All proceeds to Elmswell
Amenities Association**

Tel: 241841

Around and About cont'd., pg 15

Our May meeting will as usual be in the Library at 8.00pm on May 16th and our guest speaker for the evening will be Mr Wheeler on Alpines, and the competition will be a Buttonhole, see you there.

ELMSWELL TODDLER GROUP



Elmswell Toddlers is a friendly group that meets twice a week at the Wesley Hall in School Road (opposite takeaways); Mondays 1.30pm - 3.00pm and Wednesdays 10am - 11.30am. It is a good opportunity to meet other parents/grandparents and make new friends, while the children socialise and let off steam. We have been glad to see many new faces this year and would welcome anyone who would like to join us - admission is 80p per family and your first visit is free!

What have we been up to in the last month? Well, we had a very successful Nearly New Sale. Many thanks to all those who helped on the day, or contributed by buying and/or selling. Our special thanks go to Alex who worked tirelessly to co-ordinate the day.

We have had great fun with a variety of craft activities and the highlight being the making of Easter Baskets. We hope you all had a very happy Easter.

There are a number of exciting events coming up:-

April 29th we will have a "Grown Your Own Sunflower" session.

May 8th and 20th we plan to visit Ocean Adventure/Playworld.

June 3rd we will be running a stall at the Golden Jubilee celebrations. Do

join us for some fun craft activities and music making.

Magic Mickey was hoping to visit us on April 24th, but sadly he has postponed until August 5th 2.00pm - 3.00pm.

The Methodists have very kindly allowed us to use the land at the back of the Wesley Hall to create a garden for Toddlers. The Committee are currently trying to get their creative juices flowing and design a child friendly play area.

We have had a number of other generous offers and would like to express our thanks to an anonymous donor who has given us a Little Tikes car. Our thanks also to W A Hawes for their kind gift of card and paper and to Tom Armstrong for the children's books.

**Chrissy's
Bouncy Castle
Garden Marquees
and**

**QUALITY CROCKERY
HIRE**

**Crockery - Cutlery
Glassware - Cake Stands**

**Telephone
01359 241791**

Around and About cont'd., pg 17

For further information on our social events see the back of the Newsletter or watch our notice board in the Wesley Hall.

NEWS FROM THE METHODIST CHURCH

It is so good that the facilities at our two halls, Wesley and Exchange, are used by several local village organisations, we feel this is a real contribution to the life of our village. Currently we have free slots on Tuesday and Thursday evenings, please contact Tom Armstrong on 240242 if you are interested.

After the Easter break the ladies meeting has recommenced and the arrangements for the coming weeks are:

MONDAY 22nd 7 pm Annual Rally when ladies from local and circuit will be with us. Speaker - Mrs Maureen Wayman.

Tuesday 2.45pm April 30 - Ron Moody.

May 7 - Holiday.

May 14 - Members.

Exchange Club May 21 - Boat Trip.

Sunday 10.45am Preachers appointed.

April 21st Mrs Maureen Wayman

28th Rev. Keith Horton

May 5th Mr Stella Davis

12th Miss Jenny Benfield

19th Rev. Peter Dainty

Do drop in to our **COFFEE SHOP** on 18th April, 2nd and 16th May 10 - 11.30 held at 'Highbury' on Wednesday 17th April, and the dedication of Easter Offerings for the Bury St Edmunds circuit will be held at our church on Tuesday 30th April at 7.30pm.

ST JOHN'S CHURCH SERVICES etc at

Sunday 21 April

10.30am Holy Communion

Sunday 28 April

10.30am Morning Prayer

11.30am Holy Communion

Sunday 5 May

9.00am Holy Communion

10.30am Parish Praise

6.30pm Evening Praise and Praise

Sunday 12 May

Christian Aid Sunday

8.00am Holy Communion

10.30am CA Service

Sunday 19 May

10.30am Holy Communion

Sunday School in Church Room every Sunday except 1st Sunday in month.

St John's Church

On Palm Sunday 24 March, the concert in the Church by the Tudor Rose Singers was well attended and £156.85 was raised for the East Anglian Air Ambulance. Under the direction of Eileen Jones the Singers performed Brahms' Alto Rhapsody (alto soloist Sue O'Keefe), Humperdinck's Evening Hymn and the Fauré Requiem (soloists David Medcalf and Margaret Hodgson).

On Good Friday we joined with our friends from the Baptist and Methodist Church for a United Service of the Fellowship of Churches. The St John's Singers sang 'Come and See' and 'How deep the Father's Love' and the readings were by members of the three churches; owing to illness Revd Stephen Yelland was unable to be present so the service was led by Revd John Perrott, who also gave the address. The service was followed by coffee and

Around and About cont'd., pg19

hot cross buns.

On Easter Day, in a beautifully decorated Church, there was a Family Communion Service; the Sunday School took part as did the St John's Singers; we met again in the evening for Songs of Praise when the service was led by Helen Tilney.

As mentioned in last month's newsletter, Revd John and Mrs Penelope Perrott will be leaving Elmswell in May - their last Sunday with us is 5 May and a special welcome is extended to anyone who would like to attend the 10.30am Service and buffet lunch which will follow.

The following week is Christian Aid Week when we hope that every house in the village will be visited to collect

for this worthy cause. Christian Aid is a registered charity (238003) and works with partners in many countries around the world; this year the focus will be on the work in Ghana, Honduras and the Philippines - if you would like to help with the house-to-house collection, please contact Jean Folkard (242099) CA Organiser for Elmswell. It is possible to increase your gift by 28% if you complete the Gift Aid declaration on the envelope. Collectors will carry with them a Certificate of Authority to collect between 12-18 May - please ask to see this card if you have any doubt concerning callers at your home. Thank you.

ST JOHN'S CHURCH TOWER FLOODLIGHTING

A night's floodlighting costs £5. Please make cheques payable to "ST JOHN'S CHURCH, ELMSWELL"

MARCH 2002 SPONSORSHIP NOT PREVIOUSLY ACKNOWLEDGED

22 in celebration of John and Deb's Wedding.

Lots of love, Mum, Dad & Family.

APRIL 2002 SPONSORSHIPS

1 in memory of Rose Emma Manning's Birthday.

2 in memory of Douglas Kemp's Birthday. Love, all his family.

9 in memory of Grace Rush.

14 in memory of Ray Borrett's 70th Birthday.

14 in memory of Carl Finch.

14 remembering the Birthday of Frances Howe.

PW PRICE

Domestic Appliance Services

for repairs to:-



- Washing Machines •
- Tumble Dryers •
- Dishwashers •
- Cookers • Fridges •

**New & Refurbished
Machines Available**

25 years experience



01359 251268

0771 00111 64 (Mobile)

Around and About cont'd., pg21

- 21 in loving memory of Frances Howe on her Anniversary.
- 21 in loving memory of Gladys May Long, on the anniversary of her Birthday.
- 22 "for Teasel". Always loved, always missed.
- 23 in memory of Carl Finch.
- 27 in loving memory of Edward (Ted) Smith's Birthday.
- 30 in memory of David Lakey.

All bookings and payments please to:-

Trevor Sadler, Abbots Warren, Church Road, Elmswell (Tel: 240908)

HELPING HAND CLUB

On behalf of Malcolm, Grant, myself and all the Committee, I would like to apologise to all our members who attended our first meeting and to find it wasn't the evening they had hoped for. There were various reasons for that and thanks to you all for being understanding. We shall (I hope) be back in the swing of things on Thursday 25th usual time, when we shall have our AGM and plan the year ahead. New members welcome. See you all then. Best wishes. **Stan**

WOMEN'S INSTITUTE

After last months' light hearted talk from Felicity Hat Hire, we were brought down to earth this month by a speaker telling of the traumas affecting mothers and their illegitimate children from the 18th century until the present day, and although some present day mothers have problems and children are still occasionally abandoned,

illegitimacy is no longer a social stigma.

The painting class in March was enjoyed by everyone taking part and some of the pictures produced were on display, all showing hidden talents.

It was decided that the W.I. would donate home-made biscuits and teabags for the Street Party to celebrate the Queen's Golden Jubilee on June 3rd.

The W.I. would also be responsible for providing tea and coffee at the Agenda Conference at Haughley Barns on Tuesday April 16th.

As usual the monthly competition had many entries and Brenda Tullett's amusing limerick about Suffolk won the day.

Next month, Tues May 14th, we will enjoy tasting dips and patés.



Is your garden
a jungle ?

Call Jane Hamblin
garden design and build
Tel: 01359 270644

LAND ARMY DESIGNS
www.landarmydesigns.co.uk

Letter to Ed from Alan Hart of Cross Street

"... not journalism at its best"

It is always with great interest that I read the monthly Newsletter and especially the reports on the regular Council Meetings. I was especially pleased to read your Stop Press account of the local election this week, sharing in your enthusiasm for the result.

However I was disappointed in the way you presented the actual figures, sinking to a pretty low level of journalism (cf. Toothpaste makers offering their product in tubes containing, sometimes millilitres, sometimes grams in order to confuse the purchaser!).

The Conservative vote of 209 represented "a mere 8% of the electorate" or 22% of the votes cast. The Libdem vote of 726 represented 35% of the electorate or "a staggering 78% of the votes cast". The words "mere" and "staggering" were clearly not accidental nor was, I suggest, the use of two different measures to enhance, unnecessarily, the result; not journalism at its best.

Editor's Note

The raw figures, with statistical notes for comparison, are:

937 people, about 37% of the 2540 possible voters, turned out to vote
(*the average turnout at the last 3 comparable by-elections, in August 1996, November 1997 & January 2001, was 23%*)

Ronald Curry (Conservative) polled 209 votes
(*22% of the votes cast, 8% of the electorate*)

Carol Milward (Liberal Democrat) polled 726 votes
(*78% of the votes cast, 29% of the electorate*)

The Liberal Democrat majority of 517 overturns the Conservative majority of 96 votes achieved by Glyn Talbot in May 1999, a swing of 434%.

Letter to Ed from Paul Peachey of Bennett Avenue

"... another vote of no confidence ..."

At long last in Carol Milward we have a District Councillor who is aiming to work with the village. Although the overwhelming majority of votes received was a good turnout by the people in Elmswell, one must not forget this was not a Political vote but another vote of no confidence in the present Parish Council Chairman.

Elmswell deserves better and needs a Parish Council that will pull the village back together again.

Letter to Ed from Ronnie Palmer of Church Road

"... integrity'? I think not!"

I would like to say that I am very unhappy that the recent Parish Council 'Factsheet' came out at the same time as Chairman Curry's election literature and that they both showed the same picture of Councillor Curry on a bike with lots of publicity for Councillor Curry, an election candidate. Why didn't the Parish Council mention the other candidate?

This Parish Council newsletter is paid for out of our rates - whether we want it or not. A Parish Poll last year told the Council that we did not want it. A 'listening Council'? I think not!

So far it has been a waste of time. This last one was a blatant piece of publicly funded publicity for Ronald Curry - who wrote it! Another example of 'integrity'? I think not! Still, the result speaks for itself. Another failed tactic. Well done the people of Elmswell.

Letter to Ed from Terry Southgate of Bennett Avenue

"You are the weakest link, goodbye!"

I was a Parish Councillor when the Council decided to kick-start the Blackbourne building with £100,000 from the rates over two years.

This upset some people. One result was the promise by myself and other Councillors not to spend any more money from the rates on further building at Blackbourne. We didn't - we raised over £140,000 in grants to do the job. Another result was the election of the new Council based on the 'Gang of Nine' led by Mr Marriott, Mr Clark and Mr Curry. They promised a 'realistic Parish rate - currently far too high.' They were 'opposed to the present unjustified expenditure.' They felt that 'Councillors should be aware at all times that they are spending other peoples money.' **If the rates were high three years ago, why are we still in the top six payers in the hundred or so villages in Mid Suffolk?**

The new bowls pavilion is being built. The only money brought into the village was inherited from the previous Council as a grant from Sport England. Otherwise, they are ready to fund the lot from the rates. They have to find £44,000. There is a chance of a grant from the Amenities Association of £15,000. They tried to stop the sale of the old hall right to the end - without the sale of the hall the bowls pavilion would not have gone ahead. **Now they are trying to be the heroes!** I agree with the bowls pavilion 100%. We should have had it months ago.

Why no other grant applications - they've had 3 years to do it? Why all the rush? I suggest that, having done nothing else positive for the village they are desperate to be seen to have achieved something before the elections in May next year. I hope that the recent thrashing of Cllr Curry at the polls means that people have seen through the lot of them and that May 2003 sees a return to a reasonable Council with the genuine interests of the village at heart.

Mr Curry, I bet the Tory Party says to you, 'You are the weakest link, goodbye!' **I hope the villagers say the same next year.**

Letter to Ed from Anna McGowan of Oxer Close

"... dogs can't read ..."

How refreshing to see a show of hands in supporting my views on the Elmswellian dog dirt issue. I take comfort in the knowledge this is not only 'my problem'. This is a serious issue indeed concerning us all. I know there are some very responsible dog owners in our village, and I do not wish to offend these people. For a very brief moment, I thought the dog dirt problem was beginning to disappear and in parts of Elmswell may not be a problem at all. But there is most certainly areas where there is a higher concentration of it. School holiday time has renewed my criticism and filip to write, drawing attention to the current situation yet again. During the half-terms, end of terms, summer holidays etc., the problem escalates and unfortunately does not go away. We are living in a very civilised part of the world, and yet it appears that some dog owners do not want to handle full responsibility of owning such a pet. Dogs can't read and will never know what the implications are for depositing their dirt on gardens, pavements, verges and roads. But their owners should.

Moreover, the litter problem escalates thus during the same periods, keeping some parts of this village in a perpetual state of untidiness. As for the over-grown garden hedges and bushes that are spilling well-over on the pavements, trapping the litter and other things too.... leaves a lot to be desired.

CARL FINCH MEMORIAL FOOTBALL MATCH

**** PRIZE DRAW ****

ELMSWELL XI

V

BURY REFS XI



**at THE BLACKBOURNE, ELMSWELL
SATURDAY 20 APRIL 2002**

K.O. 6pm - All Welcome

*Hot Dogs, Tea,
etc, etc.*

Many thanks to our Sponsors so far:

- | | | |
|-----------------------------|-----------------------------------|--|
| Elmswell Tavern Social Club | Woolpit Plough | Mr R Williams of John Rannocho's Foods |
| AA Cars | Village Homes, Elmswell | Elmswell Fox |
| Travel Stop | Mr & Mrs Petchey, Elmswell Motors | Goblin Wholefoods Ltd |
| Elmswell FC | Co-op, Elmswell | Mr & Mrs Mervyn Fisher |
| Friends of Mr & Mrs C Finch | Bob Rice | Simon & Russel Lomax |
| Mr & Mrs Ray Leeks | Dale & Des Beven | Geoffrey Goymer |
| Mr & Mrs Mick Davey | Peter Dow | Gill & Paul Peachey |
| Ted Yau, Woolpit Fish Shop | Jana Admans | Falcon Promotions |

Our Cover Picture Shows

The building in our cover picture has been part of the Elmswell scene since about 1852 but has recently been demolished as it reached its 150th birthday.

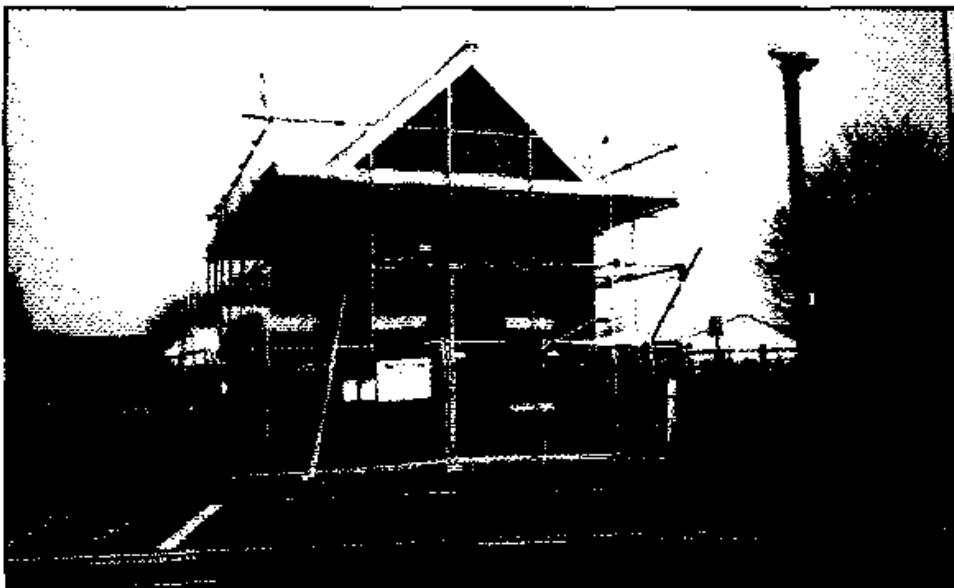
The first occupier of the building was Joseph Fison of Stowmarket who opened a depot in Elmswell when the railway arrived in the village. Fisons sold mainly salt which was widely used for animal nutrition and as a preservative.

In 1878 John Henry Newson bought the building and the property next door which is now the vets' surgery. Our picture shows the store in about 1910 after O.C. Jewers had taken over both buildings from Mr Newson. The store at that time had wooden sides and an external wooden staircase to the upper floor.

The building was used for O.C. Jewers' business as seed and agricultural merchants. The picture shows some local farm workers collecting supplies by horse and cart. The workers came from a wide area and before they began their return journeys Jewers would give them a token which could be exchanged for beer at the local public houses, usually the two nearby, the Crown or the Red Lion.

The building which is now the vets' surgery was leased by J.H. Newson to a lady who ran a tea room, popular with railway passengers. It was about this time that the first daily newspapers appeared in the village, made possible by the new railway. The enterprising occupant of the tea room had copies of newspapers available for customers to sit and read while enjoying a drink, hence the building became known colloquially as "the reading room". After this period it became a tailors, a clockmakers and from 1914-16 a recruitment and training hall for soldiers during the 1st World War. It then became O.C. Jewers' office and remained so until 1973.

In 2002 this same scene, see below is much altered.



As reported in our February edition, a Planning Inspector has given the go ahead for the construction of a two-bedroomed house where our building once stood. Behind it will go three two-bedroomed flats and eighteen one-bedroomed flats in a four storey block which, the Inspector feels, will reflect a 'traditional railway-related seed warehouse, granary, mill or maltings.'

He prefaced his remarks by observing that Elmswell has 'little clearly defined historic character.'

Here, then, is the first stage of that development - the stage that replaces the building featured on our cover.

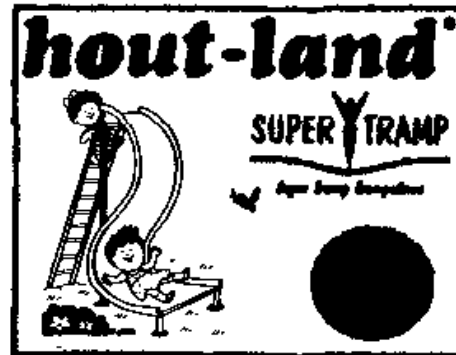
In the distance we see that the fine Dutch gable end to the station booking hall is no more. The industrial estate occupies what was Pye's yard, the road markings suggest that the horse and cart have been superseded by faster and more numerous transports. And our camera is not the only observer ... the ever watchful eye of the video has replaced the good old boys who manned the gates and who, some might argue, were very much part, along with 'the tin shed,' of Elmswell's 'historic character'.

(Our thanks to Paul Peachey for the loan of another fascinating view from his postcard collection for our cover.)

Hall Farm Toys

OUTDOOR ACTIVITY TOY CENTRE

OUTDOOR TOYS
WOODEN
GALVANISED
SWINGS
SLIDES
GOALS
SAND PITS
TRACTORS
TRAMPOLINES
WENDY HOUSES
PADDLING POOLS



Open Tues - Sat
Ring for Colour Brochure
& Free Advice

01728 - 628233

Athelington Hall, Horham,
Eye, Suffolk
(15 Mins from A140)

Amenities Association AGM

The Association held its AGM in the Memorial Library on 19th March. 44 villagers attended. The following Committee was formed;

Appointee Members

Bowls Club	Ian Tullett	Cricket Club	Graham Newman
Football Club	Herbert Mulley	Luncheon Club	Rosalie Summons
Methodist Church	Tom Armstrong	Parish Council	Eric Buckmaster
PCC	Jean Folkard	Womens Institute	Janet Sparrow
Youth Club	Marian Abbott		

Elected Members

David Barker, Jean Barker, Dick Burch, Roger Dalby, Peter Dow, Peter Edmonds, Malcolm Elliston, John Ibbetson, Tony Marsham, Steve Murphy, Lorraine Nicholls, John Petchey, Terry Southgate, Alan Sparrow.

In general questions and discussion following the proceedings proper, it was agreed that the Chairman's Annual Report should be published in the Newsletter.

The Elmswell Amenities Association Registered Charity No 304879 Chairman's Annual Report 2001/2002

Only six months have elapsed since the last AGM which could not be held until September of last year. This was one of the many ramifications of the raid on the premises of various of our Trustees by the Suffolk Constabulary Fraud Squad. Trustees, sitting as the Committee of Management, have met for two ordinary meetings in that time.

The old Library on the Trust's Cooks Road site, ceased to operate on 15th September and just one week later the new Memorial Library was declared open. On Friday 5th October, poet Brian Patten unveiled the new sign and delighted many fans who turned up to see him by reading several of his poems. The facility has received unstinting praise from librarians and borrowers alike and the increase in use stands testament to the planning and foresight demonstrated by Trustees over the many, often painful, years which it took to bring the scheme to fruition. Under the experienced guidance of our new Treasurer, Alan Sparrow, the funds accruing from the various transactions are invested against the time that Trustees see fit to use them to further the charitable object of the Association.

As a last resort, Trustees began County Court proceedings to retrieve £2000 which was lodged with the Elmswell Parish Council in 1998 to help to attract grant aid towards the funding of a community building adjacent to the bowls green at Blackbourne which was to incorporate a pavilion, changing rooms and toilet facilities for use by those using the bowls green, the field and the games pitches. A grant from the Association towards the project was promised should it be seen to be viable. The Association's case for the return of the money in the light of their having been no progress in the matter is backed by a majority of the Parish Councillors who were in office at the time of the transfer. The issuing of proceedings was the last stage of a lengthy and unsuccessful attempt to retrieve the Association's funds and has had the beneficial effect of persuading the

current Council to furnish some details of a new scheme which might well justify the Association's financial support. It is to be hoped that the matter can be resolved by further negotiation before the matter comes before the Court.

In the face of the continued intransigence demonstrated by the Parish Council in refusing to admit the improper behaviour of two of their number in the matter of the fruitless Fraud Squad raid, it was resolved to draw a line under the whole unenlightening affair to prevent further demeaning our community.

The creation of a Memorial Garden to front the new library is to begin soon when railings are installed to define and secure the site. Trustees have been advised in this by a small steering group drawn from other experienced and interested organisations within the community.

The Newsletter has not faltered, despite the competition established by the Parish Council by way of a 'Fact Sheet.' The recent innovation of computerised accounting and the efforts of Steve Murphy in administering the advertising revenue have clarified the debtor situation largely caused by the growth in popularity of the magazine which has meant a far greater administrative burden than in earlier days. The Association's accounting period has been brought into line with the Newsletter invoicing periods at the suggestion of Alan Sparrow whose input as the Association's new treasurer has been most effective and very welcome. The magazine has successfully maintained its policy of publishing everything which is received for consideration and, therefore, continues to reflect the views of a wide spectrum of contributors.

At the request of the Elmswell Sports Advisory Committee, enquiries have been made of the Charity Commission with a view to the possible amalgamation of the two bodies, probably as a new Charitable Trust. This will also address the necessary changes to the defined 'Object' of the Association now that a village hall is not part of its responsibility.

Peter Edmonds and Terry Southgate have, with apparent ease, and with the help of a heartening number of villagers, produced another Autumn Fayre and Quiz which made a substantial contribution to the general funds and remain as the high point in the coming together of our community. The Association has also been involved in assisting, in one way or another, the sheltered housing community at Manns Court, the Kiln Meadow Wildlife Area Volunteers, the Helping Hand Club, Dominote and the Lunch Club.

The Association stands at a crossroads. Trustees have, over the years, made a unique and immeasurably valuable contribution to the community of Elmswell. With the new Memorial Library now established as a runaway success, and the first phase at Blackbourne completed, the Association is in a position to continue to be a positive force for good for the foreseeable future by the wise application of its funds and enhanced income – the beneficial result of good stewardship and hard work. The way forward requires a genuine concerted effort from individuals, organisations and the other major player, the Parish Council. This co-operation has existed in the past – hence Blackbourne, hence the library, hence so many other invaluable initiatives. In recent years much energy and enthusiasm has been dissipated because the co-operation has not been there. This situation is gradually changing as the Parish Council changes, both in terms of personnel and outlook as it slowly comes to terms with the realities of community service and the responsibility of office. Yet again, I thank the Trustees for their loyalty, patience and resolve in helping the community to ride out a stormy passage the end of which is in sight.

Peter Dow

Amenities Association grant aid to the building currently under construction adjacent to the bolws green at Blackbourne

In the February Newsletter The Amenities Association published a letter which had been sent to the Parish Council and which suggested 9 terms under which the Association's Trustees felt willing to grant aid the new building.

A meeting between the Chairman and Vice-Chairman of both bodies followed and the following letter was then sent by the Chairman of the Amenities Association to the Council in the hope of moving nearer to a situation where the Trustees feel a grant can be made.

It is reproduced here in the hope and expectation that the community at large may gain an unbiased picture of the situation.

In order to expedite matters, I convened an informal meeting of Trustees immediately following our AGM on Tuesday 19th March to advise them of the outcome of our meeting on 15th March at the offices of Gross & Co. Of the 23 newly elected or appointed Trustees, 21 were present. David Barker gave a report on the 15th March meeting from the notes which he had taken (and which he had read out at that meeting so as to secure confirmation from all present that they accurately reflected the substance of the meeting).

The Trustees look forward to written confirmation of the following, as promised;-

- the figures for the total build cost including all fees;
- that sufficient funds to cover the total build cost are available either from Sport England or the Parish Council's precepted funds;
- that the building will not be phased in any way;
- that it is anticipated that the building work will be completed in July 2002.

The Trustees have asked me to pass on their disappointment upon hearing that the Parish Council were not prepared to consider the suggestions numbered 4 and 5 in my letter of 6th February, which dealt with the inadequacy of the toilet provision, as they felt that these would be non-contentious issues designed only to make the facility as successful as possible. Nevertheless, they confirm, in the face of opposition, that they do not propose to pursue those issues.

The Trustees were prepared to accept our suggestion that the concerns leading to the original request numbered 7 in my letter of 6th February, i.e. the fear of a change of use of the new building as recently happened at Blackbourne, would be adequately met by the revised wording suggested by David Barker as follows;

That the Parish Council enter into a written agreement with the Amenities Association guaranteeing that no part of the facility will be used for commercial purposes, profit or non-profit making, (which shall include use as an office or shop), for ten years without the consent of the Association.

The Trustees have requested, therefore, that the Parish council agrees to the revised wording of the undertaking as now proposed.

The Trustees do feel that they must ask for copies of the precise terms of the grant from Sport England and I do hope that this will not prove to be an issue.

Subject to the above, I am pleased to say that the Trustees have indicated that they would be willing to formally grant aid the project to the total sum of £15000.

In addition, the Trustees would be prepared to make payment of the sum of £1380 agreed to be outstanding in respect of Newsletter advertising revenue on the basis that both the claim and counterclaim presently pending in the Bury St Edmunds County Court would be dismissed.

Although the offer of a grant is not and will not be conditional upon any appointee status on the Blackbourne Management Association being given to the Elmswell Amenities Association, the Trustees have asked me to convey to you in the strongest terms that they do feel that their substantial financial contribution should be recognised in this way and ask that the Parish Council seek to persuade the Blackbourne Management Association of the reasonableness of their request.

I was disappointed to see that this matter was not discussed at the March Ordinary Meeting on Monday last under agenda item 24. Given the escalation implicit in your Council having served Notice of Application to amend the part 20 claim *, I trust that we may receive a positive response to these proposals quickly in order that this unhappy issue may be put behind us all once and for all.

**This refers to the action taken by the Council whilst the meeting was being arranged in effectively suing the Amenities Association by counterclaiming for £13,000 which, they claim, the Amenities Association is liable to pay.*

**Peter Dow
Chairman**

ELECTION FOR A PARISH COUNCILLOR

Councillor Geoffrey Wood, one of the three of our Parish Councillors who neither live or work in the village, has resigned on the grounds that, 'somebody local should take over.'

The Parish Council has the right to co-opt a new member of their choice unless an election is petitioned by ten electors applying to Mid Suffolk District Council. Such a petition was presented and an election has been called.

If the election is contested, i.e. if there is more than one candidate, then a poll will be held on Thursday 6th June. The Parish Council pays for the election from the Community Charge which it levies.

Your Newsletter offers to print a piece on behalf of any candidate in which they are invited to state their case for election. Submissions will not be edited at all unless the Editors deem them to be in any way unlawful in which case they will be referred back to the writer for amendment. A strict maximum of 350 words is allowed. The deadline for submission to Gobblins, Station Road, is 5.00pm on Wednesday 15th May. All submissions will be printed even if not all candidates are represented.

PARISH COUNCIL

An extra-ordinary meeting was called on 2nd April, attended by 8 Councillors and 7 members of the public. The following items of interest were among those discussed.

Public access at meetings. The Chairman, Cllr Ronald Curry, confirmed that, despite some recent relaxation in his rules governing Council's relationship with the electorate by way of the posting of Council meetings on village notice boards and the deposit of a set of Council's Standing Orders for public access in the library, there is to be no contribution from the public at meetings other than that currently allowed with reference to agenda items only. He declined to discuss further the suggestion that his manifesto for election in 1999 had offered 'open access to all' and 'respect for local opinion,' as the matter was not on the agenda. He further ruled that copies of the month-on-month budget & expenditure figures, which show how and where the Council's levy of Council Tax has been spent, would not be available to the public at meetings.

Ethical Code. Councillors agreed to adopt the Model Code of Conduct which lays down a mandatory code expected of members of Parish Councils across a range of issues relating to conduct in public office. Refusal to agree this code would mean disqualification from office.

The April Ordinary Meeting was held on 15th. 8 Councillors attended along with 27 members of the public and our correspondent noted the following matters of interest;

Lighting at Blackbourne. My Roy Finch was again ejected from the meeting under threat of Police action when he over-enthusiastically pursued various points of concern, including the continuing failure, since October last year, on the part of the Council to remedy the dangerous lack of outside lighting at Blackbourne where he often holds dances. When he mistakenly strayed into administrative queries which properly relate to the Blackbourne Management Association, of which Cllr Ronald Curry, who currently chairs the Parish Council, is Secretary, he was loudly - if ineffectively - told to 'Shut Up' by the Parish Clerk. The matter of the lighting was, eventually, the subject of a proposal which resulted in a decision to spend £570 on replacement units. However, it was subsequently decided that the original specification had been defective and that not as many lights were needed as had been quoted for. The Clerk and the Chairman are to re-negotiate in the hope of getting something done. It was thought unlikely that the situation, which has already been referred to the Health & Safety Executive, will have been remedied in time for Mr Finch's forthcoming charity event on Saturday next.

Claim for Public Footpath. Cllr Keith Harrison recalled the existence of a footpath on a route across the field adjacent to Mill House off Sandy Lane before the fields were amalgamated and Cllr Mrs Mary Feeney agreed that she clearly remembered use by the public after that date. The path is the subject of a claim made by the Parish Council in 1993 for inclusion into the official network based on local user evidence. One of the claimants spoke from the floor in support of his case but the landowner, present as a member of the public, queried the attempt to extend the footpaths which cross his land. The Council is to respond to a query from Suffolk County Council by asserting that there is no evidence of use as claimed. Cllr Dick Burch spoke in favour of the maintenance of the footpath network in the village, an area in which the Council had been entirely inactive for the past three years. He suggested that the post of Footpath Officer, as was in place when the Current Council took office, be revived and that the monthly report on the footpaths be reinstated. The matter is to figure on the agenda of the next meeting which will incorporate the Annual Meeting of the Council.

District Council. Newly elected Councillor to Mid Suffolk, Cllr Carol Milward, was warmly welcomed by the public prior to giving a report to the meeting. She confirmed that Elmswell might become a 'pilot' area for the proposed introduction of wheelie bins following the termination of the current waste collection contract in 2004 and that the system would provide for the separation of recyclable materials prior to collection. She reported on a meeting with the Officer concerned regarding the dangerous state of the Thedwastre Close playing field following recent work on behalf of Mid Suffolk and expressed the hope of remedial action within 4 weeks. She voiced, on behalf of constituents seeking help with problems relating to areas within the Parish Council jurisdiction, concerns regarding rowdy football games on green space at Crown Mill and the arrangements for toilet provision during the proposed Jubilee Street party. She has taken up, on behalf of the village sports clubs and others, the matter of the changing room at Blackbourne annexed as a Parish Council office in contravention, it is claimed, of planning procedures and of the terms of the Mid Suffolk grant given to support the building of a sports facility.

Housing Development at Ashfield Road. An appeal Inspector has allowed the original scheme for 10 houses on the factory site opposite the junction with Grove Lane. Councillors supported Cllr Dick Burch's robustly expressed proposal that the Developer's suggestion, that the site be known as 'Green Willows,' be firmly rejected and that his own suggestion of 'Lyle Close,' reflecting the connection with Tate & Lyle who used the site for sugar production for many years, be confirmed as the name of the development.

Provision for Young People. Cllr Doug Reed suggested that a new Working Party needs to be formed if there is to be worthwhile progress towards providing some sort of multi purpose play area for youngsters in the village. This gained general support, particularly from Cllr Feeney who felt it was about time something was done for young people in the community. Cllrs Harrison, Rowlands and Reed are to pursue this along with 2 members of the public and 2 representatives of the proposed user groups. Cllr Rowlands spoke to his proposal that Youth Shelters be provided as meeting points for young people in the village. This was also positively supported and is to be taken further once sites are identified.

Public comment at Council meetings. During the brief public session, it was pointed out that some of the frustration which explains, but in no way condones, recent disruption to Council meetings by angry members of the public, might be addressed if Council were to bow to pressure and revert to some or all of the access enjoyed by the public at Council meetings under all previous administrations. It was suggested that the recent dramatic District Council election result indicated, by virtue of the position of the Parish Council Chairman as candidate, clear and overwhelming public dissatisfaction with the way the Parish Council is run. Cllr Reed agreed that the problem is in some degree self imposed by the continued denial of free speech and argued that there is no threat to Council procedures if a framework is clearly established. Chairman Curry and Vice Chairman, Cllr Clark, were supported by Cllr Mrs Crook in opposing more open debate, but a proposal to allow a second public access session at the end of each meeting succeeded 5:3, to applause from the public present.

County Council. County Councillor Mrs Jane Storey reported on a meeting exploring the possible acquisition of finance through a Rural Transport Grant towards the provision of a bus serving Elmswell and surrounding villages to be driven by trained volunteers providing services to schools, the Health Centre, shopping trips and ferrying youngsters to and from Bury, etc. to access entertainment. She promised to pursue the on-going issues of road problems at Kiln Lane and an HGV Traffic Management Plan for Elmswell.

Website. Councillors agreed on a vote of 5:3 to spend up to £2375 on setting up a Parish Council Web Site.

Environment: Cllr Feeney raised several concerns as Chair of the Environment Working Party. The condition of Crown Mill continues to deteriorate, despite earlier appeals for action. The Play

area is effectively unfenced allowing consistent abuse and dangerous litter. The condition of the fence is to be addressed. The shrubs, despite the terms of the grounds maintenance contract, are very poorly maintained and overgrown with brambles and weeds encouraging litter retention. The contractor is to be spoken to. The green bottle bank is consistently overflowing, requiring attention from the Mid Suffolk 'Hit Squad' of environmental trouble-shooters. The lack of a sign bearing the contact number for villagers to use continues to be a problem. This will be addressed.

Jubi'ae Celebrations. Cllr Mrs Crook responded to the fears expressed to District Cllr Milward of problems with the toilet arrangements for the proposed street party on Cooks Road scheduled for 3rd June. Portaloos are booked, as is a full programme of events. Despite the press reporting of her recent observation that there had been a poor response to the appeal for support, she stressed that all is going reasonably well. Donations so far include £90 from local business together with some bunting and a large quantity of sausages.

Next Meeting. The next scheduled meeting will incorporate the Annual Meeting, at which Officers are elected, and will take place on 20th May. The timing of this meeting and the possible dates for extra-ordinary meetings will be posted at the Co-op notice board and possibly on other notice boards in the village.

Annual Parish Meeting. An open meeting for the Parish must be held before 1st June for the public to raise any matter of interest or concern. This opportunity was denied last year on the grounds that there had already been meetings at which general concerns could be expressed. Cllr Feeney sought assurance that the meeting would take place this year. Chairman Curry assured her that it would.

Peter Dow

<input type="checkbox"/> SERVIS : HOTPOINT : INDESIT : TRICITY : BELLING : HOOVER : CREDA : PHILLIPS	<input type="checkbox"/> ELECTROLUX : ZANUSSI : JACKSON : BENDIX
Don't Hire	DOMESTIC APPLIANCE SERVICES
<div style="border: 1px solid black; padding: 5px; width: fit-content; margin: 0 auto;">REPAIRS</div>	<div style="border: 1px solid black; padding: 5px; width: fit-content; margin: 0 auto;">SALES</div>
<p>GUARANTEED REPAIRS TO WASHING MACHINES • COOKERS • FRIDGES • MICROWAVES • TUMBLE DRIERS • DISHWASHERS • VACUUM CLEANERS ETC WE COVER IPSWICH • STOWMARKET BURY • STANTON • DISS • EYE • DEBENHAM • WOODBRIDGE AREAS AND HAVE BEEN IN THE TRADE FOR OVER 20 YRS. WE ARE MEMBERS OF THE DOMESTIC APPLIANCE SERVICING ASSOCIATION.</p>	<p>WE HAVE A SHOWROOM WITH OVER 120 APPLIANCES ON DISPLAY INCLUDING AEG • BOSCH • BENDIX • BELLING • CREDA • DYSON • ELECTROLUX • FRIGIDAIRE • HOOVER • HOTPOINT • PHILIPS • SERVICE • ZANUSSI ETC</p>
<p>TEL. SHOP (01449) 780398 Visit our showroom at Finbows Furnishers on B1113 at Bacton</p>	<p>WE ALSO SELL REFURBISHED APPLIANCES OF A HIGH STANDARD COMPLETE WITH A WRITTEN GUARANTEE YOU MAY ALSO TRADE IN GOOD CLEAN EQUIPMENT • BUILT IN OVENS AND HOBS SUPPLIED • ENQUIRE NOW</p>
<p>(CLOSED SUNDAY & MONDAY)</p>	
<input type="checkbox"/> SERVIS : HOTPOINT : INDESIT : TRICITY : BELLING : HOOVER : CREDA : PHILLIPS	<input type="checkbox"/> ELECTROLUX : ZANUSSI : JACKSON : BENDIX



What's On in Elmswell ?

To be included in our events diary make sure you send separate notification of your announcement.

April

- 29 Elmswell Toddler Group:
Grow your own Sunflower,
Wesley Hall, 1.30pm

May

- 8 Elmswell Toddler Group:
Trip to Ocean Adventure/
Playworld at 9.30am
- 9 St John's Church. Elmswell
Millennium History Group.
'Timber framed buildings:
13th - 17th centuries'. John
Walker
- 12 Elmswell CC v Brandon,
League, at The Blackbourne,
2.15pm (Sunday)
- 16 Gardening Club talk, Mr
Wheeler on Alpines
- 17 7.00pm. St John's Church
Organ Concert (John
Cooper)
- 20 Elmswell Toddler Group:
Trip to Ocean Adventure/
Playworld at 1.00pm

June

- 3 Elmswell Toddler Group:
Golden Jubilee Celebrations
- 9 Elmswell CC v Horringer,
League, at The Blackbourne,
2.15pm (Sunday)
- 16 Elmswell CC v Withersfield,
League, at The Blackbourne,
2.15pm (Sunday)

June cont

- 19 Elmswell CC v Falcon
Promotions XI, Friendly,
at The Blackbourne,
6.15pm (Wednesday)
- 20 Gardening Club, Mr
Plaxton on A Garden
Through the Year
- 20, 21 & 22 EADS present
'Busybody'. Methodist
Hall, 7.30 - 10.00.
- 29 Elmswell CC v Old
Warden, Friendly, at The
Blackbourne, 2.15pm
(Sunday)

July

- 2 Elmswell Toddler Group:
Trip to Banham Zoo
- 6 2pm. St John's Church
Summer Fete at The
Cedars.
- 7 Elmswell CC v Bushel,
League, at The
Blackbourne, 2.15pm
(Sunday)
- 10 Elmswell CC v Needham
Lions, Friendly, at The
Blackbourne, 6.15pm
(Wednesday)
- 12 7pm. Friends of St John's
Church AGM and Supper.

July cont

- 17 Elmswell CC v Elmswell FC, Friendly, at The Blackbourne, 6.15pm (Wednesday)
- 21 Gardening Club Open Gardens
- 28 Elmswell CC v Worlington III, League, at The Blackbourne, 2.15pm (Sunday)
- 29 Elmswell Toddler Group: Picnic at Needham Lake via train

August

- 3 Gardening Club Annual Outing to Hever Castle
- 4 Elmswell CC v Cavendish Wanderers, League, at The Blackbourne, 2.15pm (Sunday)
- 5 Elmswell Toddler Group: Magic Mickey, Wesley Hall, 2.00pm
- 14 Elmswell Toddler Group: Toddlers Teddy Bear Picnic at the Blackbourne
- 25 Elmswell CC v Earl Stonham, League, at The Blackbourne, 2.15pm (Sunday)

September

- 6 7.30pm. Friends of St John's Church Festival - Cheese and Wine & Concert
- 7 Friends of St John's Church Festival - Art Exhibition
- 8 10.30am. Friends of St John's Church Festival - Annual Service
- 8 Friends of St John's Church Festival - Art Exhibition
- 8 Elmswell CC v Edwardstone, League, at The Blackbourne, 1.30pm (Sunday)
- 19 Gardening Club, Speaker from Otley College on History of Gardening

October

- 17 Mr Sarman on Variegation/ Origin & Types of Plants
- 18 7.30pm. Concert in St John's Church - Suffolk Constabulary Male Voice Choir

November

- 16 2pm, St John's Church Autumn Fair - Blackbourne
- 21 Gardening Club AGM

Tell us more - Tel 241841