

Seventeen years of Parish Record.....  
..... Community News and the Community's Views.



# The ELMSWELL Newsletter

MARCH 2002

..... Your Parish Matters



## FUN ? IN ELMSWELL ??

see p.1.

Published by the Elmswell Amenities Association Reg. Charity No. 304879.  
Delivered free to every household and to businesses in the community.

A volunteer enterprise entirely supported by advertising.

**PLEASE SUPPORT OUR ADVERTISERS.**

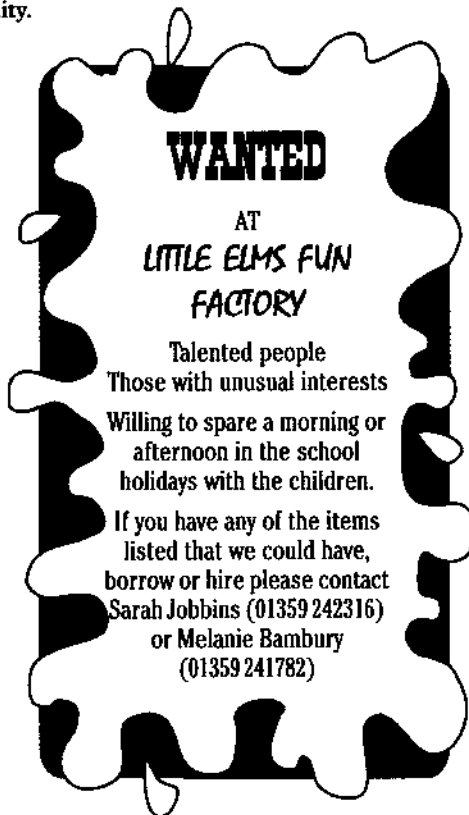
## This Month's "COMMENT"

## LITTLE ELMS FUN FACTORY

Something new and exciting is taking shape in Elmswell and it is going to be **FUN**.

**In the Beginning.....**Following the results of the Village Appraisal and, last year, a "Childcare for ALL" questionnaire, there appeared a great requirement for a Holiday Play Scheme. With this firmly in mind a group of busy, hassled mothers joined together and with the support and advice of Suffolk ACRE we are working towards providing this facility.

**Little Elms Fun Factory** will provide a warm, safe nurturing environment for children aged between 4 and 11 years. Based at the Blackbourne, we will employ qualified trained staff willing to provide structured and fun care, every day of the School Holidays (except Bank Holidays and the week between Christmas and the New Year), from 8.30am to 5.30pm. Our goal is to be up and running for the Summer Holidays, with fun packed activities, themed weeks, outside



visits with interesting projects, plus regular outings to give a holistic and stimulating environment.

**Where are we now?** The committee and staff are furiously beavering away applying for grants, making sure we meet OFSTED's standards and laying plans in preparation for this summer. This is where **you** come into our grand plans. A booking form will be published in the May issue of the Village Newsletter, for you to apply for the Parent

Information and Registration Pack for the limited number of places available. Please fill it in and return it as soon as possible as it will enable us to ascertain the numbers and ages of the children that we will be working and planning for.

Once we have confirmation of our funding we will have an Open Evening at the Blackbourne for you to come and meet the staff and the committee and to hear about our fantastic ideas for occupying your children. This will also be the first opportunity for registering your child(ren). The Open Evening will be on Tuesday 9th July at 7.30pm.

**Our Wish List.** We are looking for various items for entertaining the children, these include items like Karaoke machine, Lego, K-nex, Barbie's, Action men, Play Mobile, bean bags, boxed games, puzzles, books etc., our list is endless. We are also very keen to hear from anyone who has a talent or pastime that could entertain some or all of the children for a morning or afternoon. So, Tinker, Tailor, Soldier, Sailor or more realistically musician, linguist, sports person, art design or technology, again the list is endless. Anyone who would like to just come and help as a Volunteer would also be very welcome.

*Watch this space as the story unfolds further.*

For more information contact Sarah Jobbins on 01359 242316 or Melanie Bambury on 01359 241782.

**YOUR COMMENT INVITED...** If you have a comment, a view, a statement - something to say about anything of concern to Elmswell - share it with our readers via the 'Comment' column or our 'letters to the Editor' feature c/o Gobblins, Station Road Industrial Estate. Please include your name and address and a telephone contact number - our next deadline is 10th April.

The deadline for the next issue is 5.00 p.m. on **Wednesday 10th April 2002**. Copy to Gobblin's office on Station Road Industrial Estate or contact our Editors: Jean Barker 241135 or Peter Dow 241841. The Amenities Association, which publishes the Newsletter, will try to find space for all contributions, regardless of any point of view expressed, if space permits and providing that they are legal and that the writer's name and address are included.

Any views expressed or implied are not necessarily condoned or supported by the Association which offers, in the Newsletter, an impartial service to the community.

Advertising at the following rates. Please let us have an invoicing address with your copy:

Repeat ads - run for 6 months or more - per issue:

¼ page £15    ½ page £20    Full page £30

One off ads:

¼ page £18    ½ page £23    Full page £35

Payment strictly in advance.

Charitable, non-party political community groups based in Elmswell:

¼ page £8    ½ page £11    Full page £16    Front Cover £22

Out of Village Advertisers

Repeat ads - run for 6 months or more - per issue:

¼ page £17    ½ page £22    Full page £33

One off ads:

¼ page £20    ½ page £25    Full page £38

**N.B. Photographs £10 extra.**  
**Classified Ads: 30 words maximum**  
**£5 cash with order.**

# Around and About ...

## ELMSWELL F.C.

### CLUB SPONSORS

Mirror Group Newspapers

Warm Up Top sponsors

Energizer

First Aid sponsors Euro Food

Machinery (Elmswell)

Match Day Sponsors

Harris Cuffaro Nichols (Solicitors Old

Harlow, Essex)

### 1st Team Sponsors

Mirror Group Newspapers

### 2nd Team Sponsors

Elmswell Fox

### Match Ball Sponsors

Rota-Rod (Bob Barter)

Travelstop (Elmswell)

Stowmarket Golf Club

Tulipa Landscaping (Elmswell)

### 1st Team Manager (Joint)

A Garnham, T Price

### 2nd Team Manager

B Barber. Assistant K Hammond.

### (A) Team Manager

J McMillan

### Under 13 Sponsors

Abbots Estate Agents (Manager P Case)

### Under 12 Sponsors

Allpack (Manager S McCreesh)



### Under 10 Sponsors

Village Homes (Manager N Kerry)

### Over 35 Sponsors

C G Finch & Sons

### Monthly Draw for March

#### drawn by B Spence

No 140 M Bull £50

No 66 H Mulley £35

No 157 R Burch £25

No 101 J Armstrong £15

No 21 K Mayhew £15

### Results:

#### Saturday 16th February

First Team: Wirton Utd (A) (Away) won 2-1. Scorers D Hudson, C Brown.

Res: Coplestonians (A) Home won 3-1.

Scorers T Warby, A Ford, J Irving (Pen).

(A) Team: Westbury Away lost 5-1.

Scorer S Church.

#### Saturday 23th February

First Team: Bramford Road O.B. (Away) won 4-1. Scorers P Farmer 2 (pens), J Godson, G Colman.

Res: Woodbridge (Home) (Orwell Cup) won 4-2 A.E.T. Scorers B Hail, J Catling, T Taylor, T Warby.

(A) Team: Mindon 2000 Home won 4-1. Scorers L Stiff 2, G Warby, S Bessant.



## TaxAssist Direct

The Tax and Accountancy Service for  
Small Businesses and Taxpayers

Self Assessment, Tax Returns, Annual Accounts, Book-Keeping,  
Employed, Self-Employed or Starting a New Business

For a free initial discussion without obligation call

**Clive Jenkins. Tel/Fax 01359 242284**

## **Around and About cont'd., pg3**

Under 10: Bury Town Home drew 1-1.  
Scorer S Bass.

### **Saturday 2nd March**

First Team: Stradbroke Utd. Away lost 1-0.

Res: Kirton White Horse Home won 4-2. Scorers J Irving 3, S Warby.

(A) Team: Barrow Away Div. 2 K O Cup drew 2-2 A.E.T. Lost 3-1 on penalty decider. Scorers R Sheldrake, J Lewis.

Anyone wishing to join Elmswell Football Club please telephone B Hayward on (01359) 240951. Training Wednesday nights Grove Lane pitch.

### **Compiled by H Mulley**

Any parents wishing to help with the summer school (football), please contact A Taylor, Elmswell 242427.

## **CATHOLIC PARISH OF OUR LADY, STOWMARKET**

### **Parish Priest:**

Father Denys Lloyd,  
The Presbytery,  
29 Lockington Road,  
Stowmarket IP14 1BQ  
Tel: 01449-612946

### **MASS TIMES:**

#### **Saturdays (First mass of Sunday)**

Woolpit C of E Parish Church, 6pm

#### **Sundays**

Stowmarket (Our Lady's, Stricklands Road), 8.30am & 10.15am

Wattisham Airfield Church (first Sunday of each month), 12.15pm

Needham Market C of E Parish Church (second Sunday of each month), 12.15pm

#### **Holy Days**

Stowmarket (Our Lady's, Stricklands Road), 8am, 10am and 7.30pm

Weekday Services in the parish are listed at the front of the church at Our Lady's

and in the weekly Newsletter. If you are unable to contact Fr Denys and need a Priest in a hurry, please telephone 01284-754358.

The Parish Representative in your area is: Mrs Hilda Jackson: Holly Cottage, Long Thurlow, Badwell Ash IP31 3JB. Tel: 01359-259944.

## **ELMSWELL BAPTIST CHURCH**

The daffs are out, bunnies are everywhere and the chocolate eggs have been in the shops for two months, it means only one thing - Easter is here.

Strangely enough we shall be celebrating Easter at the chapel on 31st March 2002 at 11am. This will be a service geared towards the children so if you fancy attending an Easter service this year that is informal, slightly different and led by me then give this a look.

## **Wetherden Under Fives**



Pre school (age 3-5) and  
Rising 3's (age 2½-3)

### Open:

Mondays, Tuesdays,  
Thursdays and Fridays  
9.00am - 12.30pm

A secure, happy place where learning to socialise, share and develop is fun.

We accept nursery grants.

### Contact:

Sandra Gidney 07971 827522 or  
Sarah Paczy 01359 242965

## Around and About cont'd., p25

The children's club on Tuesdays (no name yet) will break up with the schools in March, and starts again on Tuesday 9th April 2002. As of writing we have a regular 20 - 30 children attending in which we see how many times we can cheat at different games. Give us a look, we meet every week term time and play games in teams for an hour and a half. In March we shall be playing with electric on the 12th (it won't be as dangerous as it sounds), and we shall be having our Easter Party on the 19th. Bring your Easter hat, and get ready for hunt the egg. We meet from 6pm-7.30pm and the age group ranges at present from 4 - 13, anyone is more than welcome to join us, the more ideas for cheating the better, Mark's team will beat Tony's one of these days.

On April 8th the ladies group meets at 7.45pm for an evening entitled 'behind bars'. I'm not sure if this is a talk on prison or pubs but most of those that meet have had experience of both!!

Our Alpha course continues on Wednesdays at 7pm, and our house groups on Thursdays at 7.45pm.

See our notice board outside for details. Our regular services take place at 11am Sundays, and another Children's club called Trailblazers continues at 9.45am. Just when I thought I could put my feet up our Secretary is talking about a social night on a Saturday, still I have nothing else to do now pop idol is over. (I still think Gareth should have won.)

See you at Easter.

**Mark**

a	a
b c	b c
<p><b>Elmswell Toddlers</b> <b>Nearly New Sale</b></p>  <p><b>Maternity Wear</b> <b>Baby's and Children's Clothes</b> <b>Baby Equipment</b> <b>Toys and Books</b></p> <p>If you have any things to sell, please contact Alex Bartholomew on 01359 244692 25% of the sales fees will go to Elmswell Toddlers. We would also welcome any donations of goods.</p>	
sale £ sale £ sale	sale £ sale £ sale
<p><b>Saturday 23rd March</b> <b>2 pm - 4 pm</b> <b>Wesley Hall, School Road</b> <b>Elmswell</b></p>	

## ELMSWELL GARDENING CLUB



It was a good turnout of members who made the effort to come to the Library in what can only be described as a cold and wild night, and they were more than rewarded as Mr Harbutt from Rougham Nurseries gave a very authoritative talk on the propagation and raising of both Icelandic and Oriental Poppies either from seeds or cuttings, plus his own trade secret of Slug and Snail control which he claims to be both very effective and cheap, no doubt there will be several members trying it out over the coming year.

The committee met after the main meeting and have decided that this year's Annual Outing on Saturday August 3rd will be to Hever Castle in Kent with a comfort break on both the outward and return journey's, the cost of the trip will be £16.50 for Adults and £16.00 for

## **Around and About cont'd., pg7**

Senior Citizens, and by kind permission of Mr & Mrs J Baker the coach will pick up at the Mill, but of course there will be no car parking available on site, the normal rules apply, your cheque made payable to Elmswell Gardening Club will secure your seat.

Hever Castle is a romantic double moated castle best known as the childhood home of Anne Boleyn, the castle built in 1270 contains various exhibitions including a costumed figure exhibition of Henry VIII and his six wives, in 1903 William Waldorf Astor restored the interior and filled it with works of Art and Antiques, he also created the romantic gardens including the unique Italian gardens, along with the outstanding Herb garden and possibly the longest Herbaceous Border in the country.

### **Registered Childminder**

**Vacancies for children 1 year +. Also takes after school children, near to middle school in Beyton - off main road.**

**Mary Hooper  
01359 270263**

Winners of February's competition in 1, 2, 3 order were Mrs Marguerite Lankester, Mrs Jean Mason and Mrs Ruth Armstrong. April's speaker will be Sue Russell on Climbers and Containers and the competition will be 5 Spring Flowers, and that will be as usual at the Library at 8.00pm on April 18th.

### **W.I.**

At our February meeting an attentive audience listened to Robin Sharp telling of the work of East Anglia's Children's Hospice and showing a moving film featuring some of the children and families who are being helped.

He was delighted so many members had entered the monthly competition "A HAND-MADE TOY" as he was given these to take back to the hospice.

A busy time of year, the County A.G.M. in Bury St Edmunds attended by about 10 members with yet another award presented to the County for the survey of part of the village, undertaken by our Institute in Millennium Year, in conjunction with Suffolk East Federation.

A County Quiz at the Corn Exchange with about 100 teams taking part, and looking forward to a fabulous display of hats at the March meeting, next day an all day painting class at the Blackbourne Centre, discussion on resolutions for the National A.G.M. and various outings. We do not stand still!

Our meetings are on the 2nd Tues each month at 7.30pm at Blackbourne.

### **ELMSWELL TODDLER GROUP**

The AGM held at The Fox on 20th February went 'with a bang', and a new committee of



## Around and About cont'd., p29

fourteen enthusiastic members has been appointed. As the new chair, I take this opportunity to say a very 'big than you' to Alex and Elizabeth, the previous chairpeople, who with their members did such a fine job in running Toddlers and bringing big successes to the Group last year. The new committee hopes to build on these successes. Our dedicated members have keenly taken on various tasks to ensure the smooth performance of this popular Group. We already have several projects to undertake. For example, we shall be involved in the Golden Jubilee Celebrations in Elmswell. Elmswell Toddlers is a friendly group that meets twice a week at the Wesley Hall in School Road (opposite Takeaways): Mondays 1.30pm - 3.00pm, and Wednesdays 10.00am - 11.30am. It is a good place to meet acquaintances and make new friends, while your children interact and let off steam. There are fun activities the children can take part in. For example, we usually provide a craft session and a music session. The admission is 80p per family. Your first visit is free!

Recently Toddlers has bought a 'giant Teapot' to cater for the increasing numbers. In order to make this new addition more attractive, and keep our

TEA HOT, we already have a 'granny' who has kindly volunteered to knot a special and unusual teacosy to fit the teapot.

The 'Nearly New Sale' is our next major event and takes place on Saturday 23rd March between 2-4pm at Wesley Hall. Anyone wishing to sell any babies or children's items or maternity wear should contact Alex (01359 244692). Donations will be gratefully received but if possible, before the sale date. Be sure to come along to our very popular sale. For further information on our social events, see the back of the Newsletter, or watch our Notice Board in Wesley Hall.

**Anna McGowan**

## ELMSWELL CRICKET CLUB

(Sponsored by Manvers  
Triumph)

It's a glorious day. Sunlight pours through your window. You can feel the adrenaline surging through your veins. For, as Tennyson so neatly put it (and was subsequently so misquoted), in the spring a young man's fancy turns lightly to thoughts of cricket. Self-delusion starts early in the cricket season. Bright March days are one of God's

~~ **Novelty Cakes!** ~~

You create the idea - Let me create the cake!

Free Delivery within Elmswell

**Jean Barker ~ 01359 241135**

Cartoons ✓ Sports ✓ Animals ✓ Hobbies  
Anything...



## Around and About cont'd., pg 10

cruellest tricks - promising so much yet delivering so little. From your lounge it's all so inviting but should you mistakenly venture outside without thermal longjohns, a woollen hat with ear-flaps and four pairs of socks then you'll surely suffer the consequences, as local authority workmen have to be called out to chip you from the pavement. So cricket's out - but then there's nothing to stop you thinking about it. March is the month of hopes, dreams, optimism, anticipation - and of long-term memory loss. By the time March is here, you've forgotten just how useless you were last season. Some scientists blame central heating. Watching TV highlights of England in New Zealand, you begin to think that maybe cricket isn't such a hard game after all - if Andrew Flintoff can do it, why can't you?

And so, befuddled by the deceitful gleam of the chilly March sun, you grab your trusty ruler and play the first of thousands of forward defensives in front of your bedroom mirror. All things considered, it's quite easy to time the ball with a ruler. Suddenly, a distant rattle of stumps and you're at the crease - padded, helmeted, ruler in hand as Brett Lee, world's fastest bowler, storms in from the Great Ashfield end. Wait ... there's no sight-screen - how will you see the ball leaving his hand? You can only blame yourself if he's fired up - you really shouldn't have hit his last five balls to the boundary. Three slips and two gullies wait as he roars in. He bowls. But wait, it's actually a little short ... and wide ... and, luckily, Mr Newman has been over the square on his roller so it's rock-hard; and you're now seeing the ball like a football, so you lean back and smack it sweetly to the bowls green. Steve Waugh

shakes his head in despair. The match had been all but over until you came in. However, you're not there yet. Keep concentrating. Don't relax for a moment - do that silly eye exercise that Graeme Hick and Dean Rust showed you. Lee's back. This time he overpitches and you cut the ball to third man for another four. And all this after you dismissed the first five Australians for 0. Then you wake up ... and it's still March.

Richie Benaud and Wink are always droning on about light bats but perhaps someone should tell them how potent a well-balanced ruler can be in the right hands. Shame you're not so fluent when holding a real bat. Mirror cricket has these advantages over the normal village game. And there's no chance of injury (although I did bang my head on the door last winter while expertly hooking

ELMSWELL MILLENNIUM  
HISTORY GROUP  
PRESENTS

### 'SUTTON HOO'

PAST, PRESENT & FUTURE

An illustrated talk by  
British Museum Expert

**ANGELA CARE EVANS**

(author of 'The Sutton Hoo Ship Burial')

**8.00pm Thursday April 11th**

The Blackbourne, Blackbourne Rd, Elmswell

Members £2.00: Non-members £3.00.

Everyone Welcome

Enquiries: Maureen Dow 240390

## Around and About cont'd., p213

Curtly Ambrose for 6). And it takes less time than a normal match. In fact, you can get through a whole test series in a little under 20 minutes. Only in March can you enjoy such a vivid and productive career. Only in March can you wake up deliriously happy at 4.00am convinced, even momentarily, that you've taken 8 for 35 against the might of the West Indies ... or Falcon Promotions XI!

So it's back to reality in preparation for the new season. You potter cheerfully about, digging up rank-smelling old kit from wherever you buried it for environmental reasons last September, fondling battered old cricket balls, exploring the miniature ecosystem otherwise known as your cricket bag, contacting colleagues to find out which of the teams you played in 2001 have said they never want to see you again, and hand-washing cricket sweaters that shrank in the thunderstorm at Culford and can't be worn anyway. Sad or what? So what's the latest? Good news is we've retained our sponsor (big thanks to Clive Manvers), we're in Division 3 (still hard to believe we were promoted last season), are getting our Web site updated, are about to secure a roller and have obtained a season's concession on those crispy chocolate-covered Cornflake things for teas! Bad news is we've lost our Fixture Secretary (when I say lost, I don't mean he's trundling aimlessly around the Lake District. Oh, I don't know though ...), and need more players - age, inexperience, sex (or sexuality) etc. - no barriers. If you can stand up and look vaguely good in white (but no dentists) then we need you...

**Doug Reed, Club Secretary**  
(Tel: 241009)

## HELPING HAND CLUB

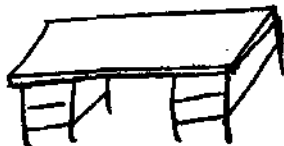
As stated in last month's Newsletter, the Club re-opens on Thursday March 28th at 7pm at the Blackbourne when we hope to welcome all of our old friends and members back to join us and hopefully some new ones. Everyone will be made very welcome so please come and see what the Club involves.

March is a very special month for two of our members, namely Joyce and Stan Howe who celebrate their Golden Wedding on March 23rd. Each and everyone of us at the Club send them our congratulations and very best wishes for their special anniversary. All of us at the Club were sad to learn of the passing of our dear old friend Tom Smith. Along



### DESKS FOR SALE

**3 Modern 'keyhole' desks**



**2 - 4'3" x 2'6" (1030 x 75)**

**£20 each**

**1 - 6' x 2'6" (1080 x 75)**

**£25**

**delivery arranged**

**All proceeds to Elmswell  
Amenities Association**

**Tel: 241841**

## **Around and About cont'd., pg 15**

with his band Tom had given our Club many hours of foot tapping music over a span of many years. Always a pleasure to have at the Club. Grant, Muriel and myself joined a packed church at Cockfield for his thanksgiving funeral service. We shall miss him greatly.

See you all on the 28th.

Best wishes.

**Stan**

### **KILN MEADOW**

Nest boxes go to new heights.

Yes, we are now erecting des res accommodation on the site. On Sat & Sun 1st & 2nd March we erected the telegraph poles from 24 Seven. Many thanks go to John Petchey of Elmswell motors for transporting the poles to the site, also thanks to Duncan McDonald of Bright Acres Plant & Tool Hire Stowmarket (also an Elmswell resident) for donating the use of a post hole borer, which saved a lot of grunt and groan on the volunteers who helped.

The poles will take Woodpecker, Tawny Owl and other nest boxes which will be erected soon.

Also thanks to Alan Hall who came along with me to give two short talks to the two Elmswell Brownie packs on "Shelter", to help them with their "Adventure Out" badge. In turn thanks to the Brownies who gave us a donation of £20 towards the site.

Finally the final haircut has also happened to the Oak tree near the pond, and all the logs and branches have been used to construct some more wild life habitats.

Again, from myself and the other volunteers, thanks to all those who have supported us recently.

**Alan Thompson 01359 241373**

### **EADS**

Following a wonderfully poetic write up to the pantomime in last month's newsletter, and the link to the advert, we had a great turn out at our open evening.



However, huge apologies must go to Graham Tilney, who was unintentionally missed off the programme, and therefore out of the newsletter. Without his wonderful keyboard skills, the pantomime would have been a great deal quieter and the singing not quite as harmonious!

We had a much larger turnout to the open evening than we had expected, and now have a long list of people for the junior production in the summer. If you missed out, don't worry, there is always room for another name on the list. Just

**Chrissy's**  
**Bouncy Castle**  
**Garden Marquees**  
and  
**QUALITY CROCKERY**  
**HIRE**

Crockery – Cutlery  
Glassware – Cake Stands

**Telephone**  
**01359 241791**

## *Retirement of Revd John*

Tuesday 20 June 1978 saw the induction at St John's Church of the Revd John A C Perrott. This was conducted by the Bishop of St Edmundsbury and Ipswich, The Rt Revd Dr Leslie Brown and the service was followed by a reception in the Memorial Hall.

On 15 May 2002 John retires and will be conducting his last Sunday morning service in the Church on Sunday 5 May at 10.30am.

In the intervening 24 years or so, many lives in this village have been touched by John's caring ministry. His daily life takes him into people's homes, into hospitals, residential and nursing homes, sheltered accommodation and in particular into the village primary school.

Into his own home are invited those he prepares for confirmation, families who wish their children to be baptised, couples preparing for marriage and members of the various church committees.

John has always made a point of attending village events when he can, to encourage those who work to enhance village life; he has also served on various committees in the village, such as the Elmswell Fellowship of Churches, the Amenities Association and as a School Governor.

It is impossible to even guess at how many services John has conducted but these include not only the 'normal' Sunday services but many weddings, baptisms and funerals. The weddings are made very personal occasions by John's individual touch - he conducted one in French and English last year! John's baptism services are legendary in the way the baby rarely cries and after the baptism is taken round the Church to be introduced to the family of the Church. Funerals are always conducted with the wishes of the bereaved family uppermost and with great sensitivity.

Some of the main events in the Church's life during the last 24 years have inevitably been related to fund raising - a mediaeval building such as St John's is a great responsibility and one which is taken very seriously. But reading through some back copies of the Parish News it seems that some

## *and Mrs Penelope Perrott*

very light hearted moments took place during the fund raising efforts to restore the Tower (1979-81), for the reordering which resulted in the Church Room, etc., being built (1993) and more recently the re-roofing of the Chancel, repair to the buttresses, replacement of some of the floor and so on. From the need for more and more funds for the fabric of the Church came the development in 1996 of the Friends of St John's Church.

Music plays a large part in the life of Elmswell Church - John has regularly taken his place in the Choir and in the newly formed St John's Singers as well as in the Music Group which plays at the Family Service. This service encourages young families to attend church together and the Sunday School is also part of the youth work at St John's, something very dear to John's heart.

We hope these are all happy memories for John and Penelope as they approach their retirement - Penelope has always been there by John's side, quietly supporting him in his ministry and we are grateful for all that she has done. When I started to write this tribute to John and Penelope I asked several people what in one word was the attribute they would remember when thinking of them and the words which came most readily to people's lips were 'caring' and 'humility'. In John's first letter in the Parish news he said 'Each of us has a gift, however small that gift may be - a gift, or ability to be used in the service of God' - John has steadfastly used his gifts of caring and humility for this village during the last 24 years. We pray God's blessing on him and Penelope as they enter retirement and hope they will have many happy years together in which to enjoy their new home and their new life.

*There is a fund to which monetary contributions may be made in recognition of John and Penelope's years in Elmswell. Cheques should be made out to St John's Church, Elmswell and may be sent to Mrs J Folkard, 10 Warren Close, Elmswell, IP30 9DS or given to Stanley at the Post Office. Everyone is welcome to attend the service on Sunday 5 May at 10.30am. This will be followed by a 'Bring and Share' Lunch.*

## Around and About cont'd., pg 17

contact Pippa (01359 241112) or Sarah (01359 242342).

We also had some brave men and women turn up to find out what the adult production was all about. More importantly, they turned up again for the read through the following week, and the auditions the week after. We now have a full cast, and will be performing 'Busybody' by Jack Poppowell, on June 20-22nd.

In this hilarious comedy, Mrs Piper, the cleaning lady in Mr Marshall's office building, one night discovers a dead man with a knife in his back - but on the arrival of Scotland Yard's Superintendent Baxter the body has mysteriously disappeared. At first, everybody believes that the boss Mr Marshall has been murdered - after having successfully made everybody in the office hate him profoundly. His wife, too, has a convincing motive for the murder: she is finally free for her lover. Actually, every

one of the suspects has a motive for killing Marshall.

Despite the effort of Baxter, the corpse cannot be found. Was it just the imagination of a highly strung cleaning lady? That is exactly Harry Baxter's theory - until the indefatigable Mrs Piper digs up more proof that there has been a murder in the office after all... What happens next? You'll have to come along and find out for yourself.

We have had some people offer to help with costumes and refreshments, but we are still looking for people to help us backstage with our current adult production. That includes building the sets, finding the props, helping with costumes, and helping out backstage. If you want to join in, or just come along and see what all the fuss is about, we meet Mondays at the Methodist Hall, School Road, from 7.30 'til 10pm.

**Pippa**

## PW PRICE

### Domestic Appliance Services

for repairs to:-

- Washing Machines •
- Tumble Dryers •
- Dishwashers •
- Cookers • Fridges •



### New & Refurbished Machines Available

*25 years experience*



01359 251268

0771 00111 64 (Mobile)

## ST JOHN'S CHURCH

Services etc

### Sunday 17 March

10.30am Holy Communion

### Sunday 24 March *Palm Sunday*

10.30am Morning Prayer

11.30am Holy Communion

7.45pm Tudor Rose Singers -  
Faure Requiem

### Monday 25 March

7.30pm Annual Meeting of  
Parishioners to elect  
Churchwardens

### Tuesday 28 March *Maundy Thursday*

7.30pm Holy Communion

### Friday 29th March *Good Friday*

10.00am United Service of Elmswell  
Fellowship of Churches

### Sunday 31 March *Easter Sunday*

8.00am Holy Communion

10.30am Family Communion

## Around and About cont'd., p21

6.30pm Songs of Praise

### Sunday 7 April

9.30am Family Service

10.30am Morning Prayer

11.30am Holy Communion

### Sunday 14 April

8.00am Holy Communion

10.30am Parish Praise

### Sunday 21 April

10.30am Holy Communion

*Sunday School in Church Room every Sunday except 1st Sunday in month*

### St John's Church

There was a full Church for the Mothering Sunday Service at St John's this year, when about 90 posies were given to the children for their Mothers. The hymns and songs were accompanied by the Music Group (leader Anthea Smith) and Graham Tilney was the organist. The Scouts, Cubs, Beavers, Guides, Brownies and Rainbows were there with their leaders - Andy Flack read the lesson and Caroline Long led our prayers.

On Palm Sunday 24 March, there will be a concert in the Church at 7.45pm by the Tudor Rose Singers. The Singers come from several local churches and will sing the Faure Requiem, Brahms' Alto Rhapsody and Humperdinck's Evening Hymn, under the direction of Eileen Jones. Admission is free, coffee and biscuits will be provided in the interval and there will be a retiring collection in aid of the East Anglian Air Ambulance.

During March the Lent Group has been meeting and this year we have reflected on the meaning of the Holy Communion service. On Easter Day at 10.30am we shall have a Family Communion Service, when we invite everyone to celebrate this joyful day together. The St John's Singers have been busy rehearsing some new music for Good Friday and Easter and will also take part in the Songs of Praise service at

6.30pm on Easter Day.

### FEBRUARY 2002 Sponsorship not previously acknowledged

28 Remembering Ronnie Miller on his birthday 28-02-02.  
"Sadly missed by family and friends".

### MARCH 2002 Sponsorships

9 in loving memory of Rob Dalby  
9 in memory of Bill Cammell  
11 in loving memory of Walter Howe on this, his anniversary  
16 for Claire Chester's birthday  
17-23 for various Metcalfe family anniversaries  
24 Nan Stagg. In memory of our Wedding Day, 63 years ago  
31 in memory of Don Baker

**All bookings and payments please to:-  
Trevor Sadler, Abbots Warren,  
Church Road, Elmswell (Tel: 240908)**

Is your garden  
a jungle ?

Call Jane Hamblin  
garden design and build  
Tel: 01359 270644

LAND ARMY DESIGNS  
[www.landarmydesigns.co.uk](http://www.landarmydesigns.co.uk)

Letter to Ed from Stan Grimwade of Oxer Close

... too casual a dismissal of the problems ...

I write in response to Mr. Durham's claim that he "feels" this village is "clean". Unfortunately his feelings do not reflect observed reality. Elmswell is no better than the surrounding villages in this respect. "Where are these piles of dog dirt?" he asks. In answer to his question, I can say that immediately after reading his letter I counted three heaps in Bennett Avenue and Crown Mill, all lying in wait on grass verges. There was a fourth, hidden in the grass near the children's playground at shop corner. None of them called for the rather kindly name of "dirt" however; they deserved a much more basic description.

I am concerned at the implication of the letter that we should take comfort from the claim that "these deposits... are the exception rather than the rule". This is far too casual a dismissal of the problems that arise when children and dog dirt come into contact. The really unfortunate fact, however, is that Mr. Durham appears to be trying to transfer the blame for the situation to Mrs. McGowan herself. His suggestion that the solution to the problem lies in her writing to the Council is a clear attempt to shift responsibility onto the victim and to leave the perpetrators appearing smugly virtuous.

Come Sir - you yourself may be squeaky clean but you must admit that your letter was an unkind response to a very reasonable statement of difficulties encountered.

## **APOLOGY - MR REDFORD**

In last month's Newsletter, we printed Rex Durham's piece on the fight to keep Fighle Close Green Space. In it he thanked 'Mr Redford for his personal interest, advice and support over two tough years'. The gentleman Rex meant to thank was Peter Dow, and he has asked us to make clear that the error was due to his handwriting rather than any similarity in style and looks between Robert Redford and Mr Dow.

## **MEETINGS AT THE LIBRARY**

The new Memorial Library was designed as a multi-purpose community facility. The Amenities Association has equipped it with seating for 50 and it is available to bona fide Elmswell clubs and organisations for meetings when the library is not open.

The Association has decided that one meeting per group may be held free of charge, perhaps for the AGM, etc., and that all other bookings will be charged at £7.50.

For further details or to book telephone 241841.



## ***Thanks to the Newsletter...***

We received a 'phone call from the resident who had written to last month's edition asking that, if anyone knew the whereabouts of the ornamental duck which had recently disappeared from her garden, would they seek to arrange its return. With the Newsletter acting as intermediary, the bird is back safe and sound and the much relieved owner was good enough to say thank you to all concerned.

---

## **MOTORISED SCOOTER**

As a result of a concerted community fund-raising effort some years ago, 'The Elmswell Wheelchair Fund', headed by Des Bevan, Muriel King and Roy Finch, raised sufficient money for the purchase of a motorised scooter for Ivan Allum.

The initiative was so successful that the fund raisers went on to generate enough enthusiasm and cash to buy a second machine - an invaluable facility for those who, as the years advance or as illness strikes, find mobility a problem.

Bill Farrow, the last beneficiary of the second machine, sadly passed away and Julie Marsden, the Warden at Manns Court sheltered housing scheme, was keen to keep up the good work by making the facility available for short-term loan to anyone in the village with mobility problems.

She contacted the Amenities Association who agreed to finance the refurbishment of the machine which is now complete.

**There is no charge, and the scooter can be transported round to the user.  
Julie may be contacted on 241 110.**

# **SHIRES**

---

## ***Property Services***

Please contact James Hines  
**(01284) 760770**

or e-mail us at

[jameshines@shires.fsife.co.uk](mailto:jameshines@shires.fsife.co.uk)

MULTI LISTING  
ESTATE AGENTS  
[www.teamprop.co.uk](http://www.teamprop.co.uk)

---

## PARISH COUNCIL

---

*An extra-ordinary meeting was called on 4th March, attended by 7 Councillors, 5 members of the public and the Community Beat Officer. Our correspondent noted the following items of interest among those discussed.*

**Public notice & access.** It was suggested by members of the public that better publicity for Council meetings might encourage greater participation by the electorate and that notices might be posted on the notice boards throughout the village rather than just at the Co-op. The Chairman, Cllr Ronald Curry, argued that this would prove to be pointless as people have access to these notice boards and could take the notices down again. Cllr Mrs Mary Feeney sought to implement another suggestion from the public that the meeting should, as time allowed, be closed to allow input from the public on any matter of legitimate concern. This, she pointed out, had been very productively done at a recent meeting when the newly elected County Councillor had been open, frank and constructive in dealing with such matters raised by members of the public. The Chairman ruled Cllr Feeney's suggestion out of order as it was a procedural matter and not for Councillors to decide.

**Bowls pavilion.** The contract for the building of the new bowls pavilion at Blackbourne has been signed. The project is likely to cost some £74,000 of which £30,000 was secured by the previous Parish Council administration for a similar scheme as grant aid from Sport England. A meeting is planned with the Amenities Association to finalise the terms under which a further £15,000 in grant aid might be available. Assuming that both grants are forthcoming the shortfall of £29,000 will be made up from the Community Charge levied by the Parish Council.

**Planning.** An informal Appeal hearing is to be held regarding the refusal of planning permission for starter industrial units on land at Grove Lane. The application for two dwellings to the rear of Little Acre on Ashfield Road has been refused but extension work at Becket House in Church Road is approved. Councillors decided to object to an application for a dwelling in the garden of Haysel, 1 Warren Lane, on grounds of overdevelopment.

**Footpath.** A Claim was made by the Parish Council in 1993 that a public footpath exists linking footpath 22 (Sandy Lane off Warren Lane up towards Mill House) with footpath 20 (from Mill Gardens over the field towards Mill House). The County Council is now ready to consider the claim and has notified all concerned.

**Crime.** The Community Beat Officer, P C Critchley, reported that 28 crimes had been logged since the beginning of the year and that 55% of these had been detected. Professional crimes against industrial premises had prevailed, but he expressed the opinion that crime committed by young people might be in abeyance as a result of the winter weather restricting outside activity.

*At the Ordinary meeting, held on Monday 18th March, attended by 10 Councillors and 19 members of the public, the following matters were part of the proceedings.*

**Public access.** The Chairman, Cllr Ronald Curry, confirmed that the agenda item, 'Questions to the Chairman', was not an invitation for the public to make a contribution but rather for Councillors to speak. It was observed that the suggestion made by the public at the previous meeting for wider publicity for Parish Council meetings had been taken up and notices posted throughout the village. This was seen as a welcome opening up of the Council to the electorate, but the continued refusal by the Chairman to listen

to the electorate was regretted. It was pointed out that messages can be left on the Council answerphone at any time.

**County Council.** County Councillor Mrs Jane Storey was, however, willing to take questions from the public following a short presentation in which she confirmed her support for a greater allocation of the County Council budget towards minor road repairs where Suffolk lags behind 75% of other County Councils. Flooding problems at the Grove Lane/Ashfield Road junction and at Kiln Lane were identified as the sort of highway problem which need urgent attention. She spoke of cross-party concerns regarding the Government's Planning Green Paper which seeks to devolve power to regional bodies other than the existing Councils. In response to public questions, she promised that applications for money from her Council's 'Locality Budget', in this case a grant towards seating at the proposed Memorial Garden in Cooks Road, are still under consideration.

**Skateboard/BMX track.** In response to two youngsters who made a case for something for the young people of the village to do, Council is to look into the matter.

**Lighting at Blackbourne.** As a member of the public, Mr Roy Finch made his often repeated plea for the light on the access pathway to be restored as it poses a safety hazard, particularly for the elderly. As a frequent hirer of the hall he has campaigned since October last for action to prevent a more serious accident than the several minor trips and grazes which have occurred to now. Mr Finch, whose frustration became evident, was eventually ruled out of order by the Chairman and the meeting adjourned until Mr Finch, carefully watching his step, left. A letter from the Health and Safety Executive requiring the Council to act on this matter within ten days was read and the Clerk was asked to 'pursue actively' the provision of quotations for the necessary work.

**County Court action.** Despite a constructive meeting with Trustees of the Amenities Association towards an out of court agreement over the £2000 of the Association's money held by Council as possible grant aid towards the Bowls pavilion, the Council has begun new proceedings effectively suing the Association for a further £13,000 which, it is claimed, was firmly and unconditionally promised towards their project.

**Planning.** Planning permission has been granted by the District Council for a house in the back garden of Arvon House, Cooks Road and for work on the protected lime trees at Newlands, Church Road. Councillors supported an application for an extension at 1 Warren Close, but could make little constructive comment on the application for detailed permission at the site for 21 apartments adjacent to the railway station as the plans provided by Mid Suffolk were inadequate.

**Posters.** Vice Chairman, Cllr A Clark, drew the meeting's attention to posters which had been placed on the Council's notice boards giving details of the forthcoming bye election and urging people to vote i.e. 'promoting polling day'. It is his clear opinion that these posters are 'Party Political' and, as such, should bear the publisher's details, which are absent. He has been removing the posters and has reported the matter to the Suffolk Constabulary.

**Cemetery & Crown Mill.** Following a heated debate, the Chairman ruled out of order all but one of the four quotations received for the annual maintenance contracts. He argued that only one contractor had submitted a 'complying tender' as the others had bid for just one of the two jobs rather than both together. A reading of the contract documentation did not clarify the position and the contract was awarded for a second year to Mr D Abbott. It was argued that Cllr David Marriott should have declared an interest and left the room, as he did last year, as Mr Abbott is his brother in law. Cllrs Clark and Curry argued that last year had been different as Cllr Marriott had been Chairman and, furthermore, that this year, Cllr Marriott had not been aware of who he

was voting for. The total awarded for the basic job, with some provision for extra expenditures, was £3440.00.

**Street lights.** Yet another professional survey is to be undertaken following complaints of poor street lighting at Miller Close. A similar survey last year did not suggest a shortfall. Cllr Curry proposed the move as Councillors are not professionally qualified to judge whether or not lighting is adequate.

**Doggie bins.** Following public reaction to a previous suggestion that the number of such units be reduced, 3 more are to be purchased for siting as recommended by Cllr Mrs Feeney's Environment Working Party.

**Cllr Talbot.** Cllr Dick Burch read from the recent resignation letter from Cllr Wood. It stated that Cllr Wood felt that he could not give the support necessary now that he is living away from the village and that a local person should take over. Cllr Burch made the case that the same circumstances apply in the case of Cllr Talbot who has moved away and refuses to say where he now lives. Chairman Curry considered that this matter was nothing to do with Council and suggested that Cllr Talbot is in 'constant touch with those he needs to be in touch with'. Cllr David Marriott felt that the proposal might threaten his position as he now lives at Culford, but Cllr Burch felt that, as he could speak with Cllr Marriott on the phone and as Cllr Marriott attended meetings and spoke when he did attend, then his case was different, if not satisfactory. Cllr Clark thought the whole suggestion disgraceful and pointed out that Cllr Talbot need only turn up one every six months to keep his seat. This he had done so far. He was present to vote against the proposal that a letter be sent to him encouraging him to make way and give other people the chance to represent Elmswell. He declared no interest but did not speak on this, or any other matter, throughout the meeting. Cllr Burch's proposal was defeated.

**Amenities Association/BMA.** Chairman Curry ruled out of order a proposal from Cllr Mrs Mary Feeney seeking to accelerate the improvement in relations with the Amenities Association by encouraging the 3 Parish Council representatives to the Blackbourne Management Association (BMA), Cllrs Clark, Curry and Crook, to call a meeting and support the acceptance of the Association as Appointee members of the BMA. He argued that the originating proposal was illegal in that it sought to tell Councillors what to do and he would allow no amendment.

**Standing Orders.** Cllr Mrs Mary Feeney pointed out that she had, in the past, had to pay privately for a set of Standing Orders to be printed and kept in the Library for public record. Cllr Marriott, as the then Chairman, had 'doubted her motives' in wanting Council to deposit an official copy of this important document and Council had followed his lead and refused to do so. At this the second time of asking, Cllr Feeney was successful in arguing for a more open relationship with the electorate and a copy will be placed in the library for public reference.

**Tools for Kiln Meadow.** The volunteers who maintain the wildlife site at Kiln Meadow, allowing the Council to fulfil its obligations under the lease agreement for the site with Anglian Water who own it, sought two specialist tools to help with the control of dock and ragwort. Dealing with these plants, an important part of the Suffolk Trust management plan to which the volunteers work, has previously be done by hand - an arduous and backbreaking task. Although a budget of £500 is available, on an amendment from Cllr Clark, just one tool is to be purchased at a cost of £64.00, 'to see how it goes'.

**Thedwastre Close Play Area.** Cllr Mrs Feeney reported on a site meeting with Mid Suffolk District Council whose recent unauthorised works to create a ditch near to the kiddies' play area in the hope of alleviating flooding at Jubilee Terrace bungalows has left a dangerous mess. The long term future of the site was discussed in the context of the drainage required if it is to be used fully. Cllr Clark argued for the removal of the play

equipment up to Blackbourne as it was never going to work at Thedwastre. Council had placed it there, he suggested, against his advice. The health and safety aspect of the situation is to be assessed prior to any action being taken.

**Wheeie bins.** Cllr Mrs Feeney, as Chair of the Environment Working Party, has been in frequent contact with Mid Suffolk District Councillor Norris who has provided full information and the local history of the wheeie bin situation. Nothing can happen before the expiry of the current Onyx licence in 2004 but he accepts that, in the light of representation made to him by Cllr Feeney regarding the Elmswell Village Appraisal statistics, our village might be suitable for an earlier 'pilot' scheme.

**Councillors employed by Council.** In the light of questions regarding the employment of Cllr Harrison by the Council to do work at Blackbourne, the Parish Clerk ruled that, as long as competitive quotations are secured, Councillors may be employed to do work for the Council.

**Jubilee Street Party.** Cllr Mrs Jeanne Crook who is co-ordinating the Council proposed celebrations on 3rd June in Cooks Road reported on a poor response from appeals for sponsorship with the significant exception of Alan Wells, of Wells Stitched Embroidery, who is to provide the bunting. This, observed Chairman Curry, proves that there is no "war" in Elmswell.

**Next meeting.** The next scheduled meeting is to be held at Blackbourne on Monday 15th April. This and other meetings are posted at the Co-op and may or may not be notified on other notice boards in the village. Public comment, on agenda items only, is invited at the beginning of the meeting only, so prompt attendance is advised for those who would participate.

Our correspondent is Peter Dow

## ABLE DOMESTICS

(PROP. K HARVEY)



### REPAIRS & SPARES FOR:-

HOTPOINT - HOOVER - INDESIT - BENDIX - CRED A - ELECTROLUX  
ZANUSSI - ELECTRA - PHILIPS - ENGLISH ELECTRIC - WHIRLPOOL  
& MOST LEADING MAKES

BURY ST EDMUNDS, STOWMARKET AND SURROUNDING AREAS

**(01359) 242402**

CHURCH STREET, WETHERDEN, STOWMARKET

ALSO COOKERS,  
FRIDGES, FREEZERS, TUMBLE DRIERS & DISHWASHERS

## What's On in Elmswell ?

To be included in our events diary make sure you send separate notification of your announcement.

### March

23 Toddlers Nearly New Sale 2 - 4pm at Wesley Hall

24 7.45pm. St John's Church Faure Requiem (Tudor Rose Singers)

### April

8 Health Visitor to Toddler Section 1.30 - 3.00pm

### May

9 St John's Church. Elmswell Millennium History Group. 'Timber framed buildings: 13th - 17th centuries'. John Walker.

17 7.30pm. St John's Church Organ Concert (John Cooper).

### June

20, 21 & 22 EADS present "Busybody". Methodist Hall, 7.30 - 10.00.

### July

6 2pm. St John's Church Summer Fete at The Cedars.

### July contd.

12 7pm. Friends of St John's Church AGM and Supper.

### September

6 7.30pm. Friends of St John's Church Festival - Cheese and Wine & Concert

7 Friends of St John's Church Festival - Art Exhibition

8 10.30am. Friends of St John's Church Festival - Annual Service

8 Friends of St John's Church Festival - Art Exhibition

### October

18 7.30pm. Concert in St John's Church - Suffolk Constabulary Male Voice Choir

### November

16 2pm. St John's Church Autumn Fair - Blackbourne.

*Tell us more - Tel 241841*

**Monica L. Carlin** MSSCh. MBChA.

**Ruth E. Carlin** MSSCh. MBChA.

**Qualified Surgical Chiropodists**

Registered Members of the British Chiropractic Association  
Surgery & Visiting Practice



Langdales', The Green, Woolpit, Suffolk, IP30 9RQ.

Tel. (01359) 241731

# **Golden Jubilee Celebrations**

**Monday 3<sup>rd</sup> June 2002 – 2.0pm to 5.0pm**

“A Street Party” Will take place in Cooks Road for Residents of Elmswell to celebrate this great Event.

## **Something for Everyone**

50 Years of Music

Fancy Dress for all Ages- Remembering each Decade

Side Shows with Prizes

Free Refreshments

Local Entertainers

.....

Any Firm, Organisation, or Individual  
Wishing to contribute to this event  
Either – Financially or Physically

Please contact:-

Keith Harrison Tel. 241181  
Or Jeanne Crook Tel. 241591