

Seventeen years of Parish Record.....

..... Community News and the Community's Views.



The ELMSWELL Newsletter

OCTOBER 2002

..... Your Parish Matters

WIN this delightful watercolour –

see “Stowmarket Concert Band” Advert – Page 7

**Published by the Elmswell Amenities Association Reg. Charity No. 304879.
Delivered free to every household and to businesses in the community.**

A volunteer enterprise entirely supported by advertising.

PLEASE SUPPORT OUR ADVERTISERS.

**This Month's
"COMMENT"**

comes from Tony Chaplin -
Poppy Fund Collection Organiser
for the Village. Tel 242059

Every year it does not seem twelve months ago that I sat down to write my 'piece' for the Newsletter. This is no doubt to do with the old adage that time passes more quickly the older you get.



The "older you get" is a phrase which applies to many people and to many things. None perhaps more so than to the ex-service veterans who, over the years, have selflessly and without thought for their futures stood in the line of duty for their country. Recently I read in the newspaper that the last surviving R.F.C. pilot had died aged 106. There cannot be too many World War 1 survivors left now, but there are countless others from other conflicts both large and small down the years. I have recently watched a T.V. programme and read a book about the search for and discovery of the remains of HMS Hood. The last survivor from the catastrophe appeared in the programme - no longer a young man.

More recently, in fact, bang right up to date, our own East Anglian Regiment was sent to Afghanistan, together with a Royal Marine Commando and other support troops. Casualties were mercifully light, but who knows what might happen if our service personnel are involved in any conflict with Iraq.

The welfare of our ex service personnel is looked after by the Earl Haig Fund - set up in the years after World War 1 for specifically this purpose. It derives the bulk of its income from the annual "Poppy Collection" which will be taking place over the next week or two.

Someone will call at your door, or you will find a collecting box in the Post Office, shop or pub. Please give generously and help to make this year's collection one to be proud of. Suffolk has always done well in the Poppy Collection and let us hope that it does so again this year.

Thanking you in anticipation.

Around and About ...

HELPING HAND CLUB

The September outing to Cromer and end of pier show was much enjoyed by everyone.

Our Harvest Supper on September 26th was attended by a large number of members and guests.

A superb supper was catered for by Crossways Caterers. A very sincere thank you to Tina and Sylvia for excellent food and service.

After supper we were entertained by the excellent ex Tom Smith Band. It was great to have them back with us again. Allan was a great replacement for our dear old friend Tom.

Our Oct 10th meeting included a double



acts entertainment quiz which was found quite amusing.

At the time of writing these notes we are looking forward to our next meeting when we are going to be entertained by our good friend from the village, the very talented Peter Clark.

Until next month,
Best wishes
Stan

SERVICES etc., at ST JOHN'S CHURCH

Sunday 27 October

10.30am Morning Prayer

11.30am Holy Communion

Sunday 3 November

9.30am Family Service

YOUR COMMENT INVITED... If you have a comment, a view, a statement - something to say about anything of concern to Elmswell - share it with our readers via the 'Comment' column or our 'letters to the Editor' feature c/o Goblins, Station Road Industrial Estate. Please include your name and address and a telephone contact number - our next deadline is 13th November.

The deadline for the next issue is 5.00 p.m. on Wednesday 13 November 2002. Copy to Goblin's office on Station Road Industrial Estate or contact our Editors: Jean Barker 241135 or Peter Dow 241841.

The Amenities Association, which publishes the Newsletter, will try to find space for all contributions, regardless of any point of view expressed, if space permits and providing that they are legal and that the writer's name and address are included.

Any views expressed or implied are not necessarily condoned or supported by the Association which offers, in the Newsletter, an impartial service to the community.

Advertising at the following rates. Please let us have an invoicing address with your copy:

Repeat ads - run for 6 months or more - per issue:

¼ page £15 ½ page £20 Full page £30

One off ads:

¼ page £18 ½ page £23 Full page £35

Charitable, non-party political community groups based in Elmswell:

¼ page £8 ½ page £11 Full page £16 Front Cover £22

Out of Village Advertisers

Repeat ads - run for 6 months or more - per issue:

¼ page £17 ½ page £22 Full page £33

One off ads:

¼ page £20 ½ page £25 Full page £38

Payment strictly in advance.

N.B. Photographs £10 extra.

**Classified Ads: 30 words maximum
£5 cash with order.**

Around and About cont'd., p22

10.30am Morning Prayer
11.30am Holy Communion
6.30pm United Service Elmswell
Fellowship of Churches
At Baptist Church,
Ashfield Road

Sunday 10 November

8.00am Holy Communion
10.30am **Remembrance Day
Service**

Saturday 16 November

2pm Autumn Fair at the
Blackbourne

Sunday 17 November

10.30am Holy Communion

Sunday 24 November

10.30am Morning Prayer
11.30am Holy Communion

*Sunday School in Church Room at 10.30am
every Sunday except 1st in month.*

St John's Church

The Harvest weekend at St John's commenced with Gift Day on Saturday 28 September and we thank everyone who made donations to Church Funds. Our morning Harvest Thanksgiving Service was led by Revd Prebendary John Pearce; the lesson was read by Mr John Thurlow and we were pleased to welcome the Brownies to this service - they had once again provided some beautiful decorations and gifts around the font and as is usual at Harvest-time there were many lovely autumn flower arrangements in the Church. Rosemary Oliver led some special songs for the children who brought their harvest gifts, which the following day were distributed to housebound and elderly people in the village and to St Nicholas' Hospice. The evening service was conducted by the Rural Dean, Revd Canon Derrick Stiff.

Handbells -the closing date for the Quiz which was set by Nick Smith to raise funds for the repair of St John's Church

Handbells has been extended to 6 January 2003, so there is still time to enter! Entry forms can be obtained from the Church, price £1. They will also be available at the **AUTUMN FAIR** at the Blackbourne on 16 November and at the Flower Arranging Demonstration by Mrs Anne Dyball in the Church on Saturday 7 December. This year the money raised at the flower arranging demonstration will go to the Handbell Fund.

**THE BIGGEST COFFEE
MORNING IN THE
WORLD.** Although only 53
people attended the event



this year there were some very generous donations which brought the final total to £369.46 for the Macmillan Cancer Relief Fund. Each year the organiser has the choice as to whether the money goes

ELMSWELL CRICKET CLUB
in conjunction with Home Start

ENTERTAINMENT QUIZ



"For your next pint, who piloted Thunderbird 4?"

Questions on film, music, theatre, radio, TV, musicals,
and more...

Saturday 30 November at The Blackbourne
Entry from 7.30pm - Quiz starts at 7.45pm

£2.00 per person (max. 6 people per team)
Proceeds split between the Club and Home Start

Contact:

Doug Reed, Second Thoughts, Church Road (241009)
Graham Newman, 25 Warren Close (240848) or
David Peachey, 34 Blackbourne Road (242822)

Around and About cont'd., p23

to national or local funds and as in each year so far the money raised in Elmswell will be spent in this locality. Thank you to all who helped, attended or made donations. *J Folkard*

ST JOHN'S CHURCH TOWER FLOODLIGHTING

For October the lights will be on between 7.00pm and midnight.

A night's floodlighting costs £5. Please make cheques payable to "ST JOHN'S CHURCH, ELMSWELL"

October 2002 Sponsorships

- 1 in loving memory of Thomas Robertson's Birthday
- 2-5 Anon
- 6 in memory of Dorothy Bloomfield's Birthday
- 7 Anon
- 8-12 Happy Birthday, Thomas Mitchell. Love, Mummy
- 13 in loving memory of Elsie Williams. Love, Jane-John
- 17 in memory of Kayleigh Wallace on her 5th Birthday. Love, Mummy, Daddy and Kyle
- 20 in loving memory of Percy Pleasance
- 21 in memory of Ron Comber's Birthday
- 23 in loving memory of Bernard Booth. Love, from all the family
- 25 in memory of my wife, Rita Bennett, on her Birthday
- 26 in memory of Carl Finch on his Birthday
- 31 in memory of Roy Clark.

All bookings and payments please to:- Trevor Sadler, Abbots Warren, Church Road, Elmswell (Tel: 240908)

ELMSWELL BAPTIST CHURCH

Times are a changing and so must we. There was a piece in the Evening Star the day I wrote this about how churches need

to change and become more relevant today. You should feel a sense of enjoyment, relaxed atmosphere, comfort and friendliness when you go through its doors, much the same as Portman Road on a Saturday afternoon!! (Unless you are wearing green and yellow). Well, we may not be able to offer you the nationwide league, but we would like to think we could offer you the comfort of the premier league (although you still may get a look if you wear green and yellow). We have changed quite a bit over the last year, offering you lots more than just Sunday Services, and there is still more to come. After our Church meeting this month, I should have two very exciting changes at the chapel next newsletter. One will be adapting to our modern day Sunday, and the other will involve a bit of new blood. This sounds strange, but at least you'll want to read next months' item when all will become clear.

On 6th of this month we had our harvest/parade service which I hope everyone enjoyed as I took it, and I'd like to be asked back.

On 10th we started our regular Thursday sessions entitled '10'. This carries on at 7.30pm each Thursday so give this a look to find out more and meet new friends. Our Tuesday CU club continues, we continue to welcome new members each week, and I can't believe how quiet, shy little ones can change completely after a six week break in the summer, I suppose it keeps us on our toes. There will be no meeting at half term on 22nd, but that will be our only break until Christmas. Things to look forward to this month will include a luminous evening, a firework poster night and plagues!!! (Please bring your own.).

On 4th November the ladies group will meet at 7.45pm for a look at 'Christmas Arrangements'. I'm sure this will include

Around and About cont'd., pg5

ensuring Gran is asleep after the meal, the children opening their presents by 5am, visiting the same shops in 8 different locations and hoping everyone is gone before Only Fools and Horses starts.

We now offer you a night out on either a Monday, Tuesday or Thursday and a Sunday so you have no excuse. For any information on any of our activities please contact Tony our secretary on 241541.

Finally can I ask you to think of Marion from our Chapel this month who on the 6th will be flying to Hong Kong and China to distribute bibles and help churches in very risky areas that are still under communist rule. We wish her well, and will look forward to hearing from her in two weeks time on her return.

See you next month when hopefully we shall be out of the bottom half of the table.

Mark

GARDENING CLUB

The Chairman opened the meeting by inviting the Treasurer to speak of the success of the Open Gardens Day, the Treasurer said that the day had been both successful in stature and financially, and from the financial view point he was going to recommend to the floor that a cheque for £50.00 be sent to the Friends of Woolpit Health Centre as our donation from the day, the motion was accepted and a cheque would be winging its way over to Woolpit.

The Chairman then went on to say he had received advanced warning of some retirements for this years AGM, and the first one being that of Olive Spanton, and whilst he said he was very sad at this, it had to be recognised that 18 years of loyal service had to be applauded, and throughout his own Chairmanship Olive had always give him great support and that he knew he could rely on her for a first class job, and whether it was her tea making at Gardening Club or around her own kitchen table an exquisitely refreshing cup of tea was soon produced. Secondly he had also received the proposed resignation of John Spanton, and again he felt very sorry about this, and felt the Gardening Club would be all the poorer, he said that nothing but gratitude and praise should be heaped upon a man who had given 20 years service to the club and made the Open Gardens what it now is, through his sheer determination and persuasion in getting the large number of gardeners to open their gardens.

The Chairman then went on to say that his own position had changed, over the last year and he too would not be seeking re-election, and since the meeting his attention had been brought to the fact that Hon Sec was going to retire due to



STOWMARKET CONCERT BAND 'BEER NIGHT'

SCB invite you to join them for a fund raising evening of fun and games, music and food at The Blackbourne, Elmswell at 7.30pm on **Saturday 16th November.**

£6 per person (includes basket supper).

Raffle to take place during the evening for a painting of Elmswell Church.

Prizes to be won during games!

For tickets and further details ring Pam 242299



Around and About cont'd., p27

personal commitments, and again what can be said about a man who had been a member of the Club since its conception, and had been Secretary for more years than his memory would allow him to recall, and personal modesty would not allow him to accept the accolades deserved for having done such a grand job over so many years.

So, as can be seen, there are jobs that will need to be filled at the AGM on November 21st at 8.00pm in the Library. I therefore urge all members to attend and be prepared to do something as no club can run without its principal officers and a committee, and just one further thought, if you don't, the third Thursday in the month will not be the same.

LITTLE ELMS FUN FACTORY

We cater for 4 to 11 year olds 8.30am to 1.30pm and 1.30pm to 5.30pm Monday to Friday during each and every school holiday (except bank holidays). We are based at the Blackbourne village hall in Elmswell.

For more information or to reserve your child's space phone Sam Woolnough on 01359 242806 or Joy on 01359 242259.

ELMSWELL W.I.

The October meeting of Elmswell W.I. took an unusual form, a large number of regular members were joined by friends of Bridget Baker to remember her time with us.

After the ordinary business was dealt with, Janet Baker gave an interesting account of the Autumn Council Meeting held at the Corn Exchange in Bury St Edmunds. Margaret Byne was congratulated on her beautiful arrangement of flowers entered in the County Competition.

The Darts team captained by Glenda Armstrong had won the Darts Shield for

the second year running.

Then on to the main purpose of the meeting - poems and humorous anecdotes remembering Bridget were read and told by her many friends, causing much laughter, but also sadness. How Jerusalem had to be sung at every meeting and her high standards when washing clothes or crockery. We then played 'Bingo' and ate chocolates, two of her particular likes.

The flower arrangement competition reflected her many facets.

After finalising visits to the Group Meeting at Norton and to the theatre and looking forward to next month's AGM, members went home in thoughtful mood, everyone glad to have had the good fortune to know Bridget.

Jeanne Crook

AUTUMN FAIR

at the
BLACKBOURNE
Elmswell

(Proceeds to general funds
St John's Church, Elmswell)

SATURDAY
16th NOVEMBER 2002

at 2pm

Cakes - cards - darts - books -
gifts - raffles - tombola - games -
childrens' corner

REFRESHMENTS

ADMISSION FREE

Around and About cont'd., p29

W.I. Shopping Trip

The shopping trip to Norwich in on Tuesday 19th March leaving Bakers Mill Yard at 9.10am returning by 6pm, leaving Norwich at 4.30pm. Cost £5.

Some seats available. Contact Janet Baker 240229.

NEWS FROM THE METHODIST CHURCH

Around 50 folk from the three churches in our village sat down to a most enjoyable Harvest Supper on Friday 4th October, and afterwards learned more of the work of TEAR Fund, and were able to contribute at the end of the evening. The speaker, David Cooper from Ipswich, was delighted to receive £173.00 from the Fellowship of Churches annual supper. The three churches join together for the evening service on November 3rd at the Baptist Church, Ashfield Road, at 6.30pm.

Our hall continues to be used by many organisations, and we are thrilled that a youth club is now being held, and although not many weeks old, already boasts very good numbers.

The Tuesday Exchange Hall Club will meet on November 19th when Alan Fish will be speaking on the work of the Royal National Lifeboat Institute. Everyone interested is welcome, the meeting begins at 2.45pm.

The Women's Fellowship will visit Old Newton on 29th for their annual rally. On November 5th they have a members afternoon, and on November 12th Ron Moody will speak to them. The speaker on 26th will be Mrs Maureen Newcombe. Preachers planned to lead Sunday worship - 10.45 am

Oct 27th	Revd Keith Horton
Nov 3rd	Mr Stephen Roe
Nov 10th	Revd Stephen Yelland
Nov 17th	Revd Jeffrey Bloomfield
Nov 24th	Mrs Carol Colton

ELMSWELL TODDLERS

Tensions have been high this month with competition fever hotting up over who's got the biggest sunflower (well done Trudi and family) and who's grown the biggest pumpkin (well done Ben Stott & Co). Needless to say, it's the grown ups who have been comparing "their" entries with other possible contenders around the village and not our little angels who actually planted the seeds (and swiftly lost interest)!

A major part of *The Garden Project*, Toddlers' joint venture with the Methodist Church Committee, has been completed with thanks to Tulipa Landscaping. It looks fantastic - thanks



~~ Novelty Cakes! ~~

You create the idea - Let me create the cake!

Free Delivery within Elmswell

Jean Barker ~ 01359 241135

Cartoons ✓ Sports ✓ Animals ✓ Hobbies
Anything!...

Around and About cont'd., p210

Guus, from all the Toddlers. Elmswell Toddlers have offered to pay the Methodist Church ½ of these costs and hope to raise approximately £800 this year with our various fundraising projects purely for this purpose. In true fashion, September/October has seen the Garden Project Fund account steadily rise. The latest major financial boost to the project came from September's Nearly New Sale which once again was a roaring success. With over 50 sellers and crowds queuing to get their winter bargains, we made over £200 on commission and donations. In particular Alex would like to thank Sarah Webber and Peter who helped for almost 13 hours on the day! Additionally, a huge thank you to everyone else who took part: leaflet droppers, helpers on the day, sellers and buyers. Without your help, we couldn't put these bi-annual sales on. Well done you Elmswellians!

Wetherden Under Fives



Pre school (age 3-5) and
Rising 3's (age 2½-3)

Open:

Mondays, Tuesdays,
Thursdays and Fridays
9.00am - 12.30pm

A secure, happy place where learning
to socialise, share and develop is fun.

We accept nursery grants.

Contact:

Sandra Gidney 07971 827522 or
Sarah Paczy 01359 242965

A generous donation from Lloyds TSB of £50 (thanks to toddler mum Jane Riches) made another boost to the funds and the end of October hopes to see yet more cash flowing in following ½ term's Tempest Photo Shoot. It really is great to see such a positive community involvement. Throughout the year, the people of Elmswell and its local businesses have been so generous and for that we are really grateful.

A huge thank you from us all at Toddlers goes to Evelyn Jennings. Evelyn has been a regular Toddler adult for the last 4 years, always keen to lend a hand in the Toddler sessions and with our various fundraising events. Libby Mac, Evelyn's grand daughter is too old for Toddlers now, but Evelyn doesn't feel she is ready to give us up just yet, so has kindly offered to be the Tea/Coffee lady for us on our Monday sessions (John is especially thankful for this very kind offer as the coffee rota and getting everyone to do their stint is the bane of his life!). Thank you! thank you! thank you!

For anyone thinking about their little ones' birthday parties and possible venues around the village for hiring, don't forget the Wesley Hall. Contact Tom Armstrong c/o the Methodist Church Committee (why not pop along to a Toddlers session and pick up his number!) and for an additional small donation, you can hire Toddlers' kiddy tables and chairs.

So, if you haven't yet been along to see our fantastic Toddler Group in action, then why not drop in. Your first session is free which can't be bad and we meet on Mondays (1.30-3pm) and Wednesdays (10-11.30am). Usborne Books will be visiting us on the 4th and 6th of November and we'll be having a story time session along with our regular music and craft sessions on these dates. It will also be an

Around and About cont'd., p213

ideal time to sign up to a couple of social events leading up to the big C word. Our Christmas Meal out with adults at the Bull in Woolpit is on Wednesday 4th December and the Toddlers' Christmas Party is on Sunday December 15th. Don't miss out anymore, come on down and see what you're missing. For more of our busy action packed schedule, see Dates for your Diary in this month's Newsletter or call Anna on 242348 **Alex B**

Dates for your Diary

Monday 4th November

Usborne Books visiting Elmswell Toddlers 1.30pm

Wednesday 6th November

Usborne Books visiting Elmswell Toddlers 10am

Wednesday 4th December

Elmswell Toddler Adults' Xmas Meal out

Sunday 15th December

Elmswell Toddlers' Xmas Party

Monday 16th December

Health Visitor visit to Elmswell Toddlers

Monday 23rd December

Last 2002 Elmswell Toddlers Session

Monday 6th January 2003

Happy New Year Elmswell Toddlers

Monday 13th January

Playworld Trip for Toddlers

Wednesday 12th February

Playworld Trip for Toddlers

ELMSWELL CRICKET CLUB (Sponsored by Manvers Triumph)

So, the season's over ... and we survived again. Village cricket these days seems to be about keeping your Club above water and, in Elmswell, we're in danger of becoming masters of the art. So many places have lost teams - despite the odd fact that it's a form of cricket that continues to receive a favourable press. First class and international cricket have been tainted by corruption, gamesmanship, and Merv Hughes's moustache but the village variety remains (sadly?) untouched by commercialism and is widely perceived to have kept alive the game's more honourable traditions.

Just mention the words 'village' and 'cricket', and for many this conjures up a romantic view of rural East Anglia. A sepia-toned rustic idyll, full of burly blacksmiths and off-spinning parsons, and chaps with pipes called John (not the pipes!) who always make big scores. Birdies tweet from the branches of 200-year-old oaks while floppy-eared bunnies scamper cutely through the undergrowth. No multi-lane bypasses abuse the perimeter of this paradise. No day-trippers, no New Age travellers and no thirty-somethings buying up all the best



Christmas Flowers

a demonstration by
Anne Dyball

on

Saturday 7th December 2002

at

St John's Church, Elmswell

10.30am Coffee

**- followed by demonstration
and Buffet lunch**

Tickets are £6.00

and are available from

Anne Dyball, 01359 240245

In aid of Handbell Appeal

Around and About cont'd., p215

houses in the village as holiday homes. There are no licensing hours 'cos the jolly landlord is still dispensing foaming tankards of strong local brew at 4.30pm. Yokels in smocks, relentless sunshine, lambs bleating, small children in sailor suits... Oh, stop it! Get real. Despite the repeated efforts of thousands of mad village players around the country, and of eleven pick 'n' mix guys here in Elmswell especially, the nauseating image above remains. The blame probably lies in decades of black propaganda from the *Test Match Special* team, not to mention improbable costume dramas on TV and film which use village matches as scenic backdrops for feeble, corset-ripping storylines.

"Ah, young Dick, good times eh? The harvest be done, the young Mr James is to get wed, and his Lordship is 73 not out against Thurston. Ar... we'll nivver see tha likes of these days agin." "Ah, young Peter, that we won't. Fancy another foaming tankard of strong local brew?" Twenty minutes later Dick and Peter are mown down by friendly fire at Ypres.

The romantic image of village cricket prevails because people want it to - advertising companies wanting to make their worthless products more 'rural' and appealing. Dubious publishers reproducing grotty old cricket books from the 1650s. Tim Rice. The list is endless (unlike David Peachey's innings). Truth is, in the many village cricket matches I've played in, I've never seen a floppy-eared bunny scamper anywhere, unless it's under the wheel of a passing lorry. Robin redbreasts search in vain for branches of aged oaks from which to tweet because Farmer Giles plc has had them all cut down. The last burly blacksmith died in 1953. The jolly landlord is forced to sell watered down Stella Artois from the local brewery. The parson spends Sunday

afternoons with his close friend, Clive, and village cricket is anything but a soft-focus backdrop to a costume drama. It's brutal. John Inverdale should forget "The World's Strongest Man" and pay attention to a game that some observers have compared to catfish wrestling. While outsiders might see elegant (Nigel Greathead excepted) figures bounding across The Blackbourne cheerfully shouting expletives at each other, the reality is that beneath the calm idyllic surface raging torrents surge. As ever, people see what they want to see. If they'd rather watch village cricket than play it then it's their choice to miss the subtleties of play, the artful stratagems, the blatant cheating and the random violence. The old image is all but indestructible. We're stuck with it. Come and see for yourself some time.

Anyway, I'll stop prattling and congratulate Ian Tullett who was the winner of the Club's recent quiz-competition "Who Is It?" Eight entrants somehow managed to submit all-correct sheets. Carole Reilly somehow managed to draw the winning name from those who went into Wink's cricket cap. Speaking of quizzes ... our "Great Christmas Quiz" is now on sale @ £1. Watch out for this. And our annual "Entertainment Quiz" will be held at The Blackbourne on Saturday November 30. See the separate advertisement in this newsletter. Get your entries in now...please contact myself, Graham Newman (Tel: 240846) or David Peachey (Tel. 242622).

Doug Reed (Tel: 241009)

Elmswell CC Century Club Draw September:

£15 M Schofield (No 36)

£10 J Scott (91)

£5 M Peachey (101)

Around and About cont'd., p216

ELMSWELL F.C

Club Sponsors: Mirror
Group Newspapers

Warm Up Top Sponsors:
Energizer

First Aid Sponsors: Euro
Food Machinery (Elmswell)

Match Day Sponsors: Harris Cuffaro
Nichols (Solicitors, Old Harlow, Essex)

Summer School Sponsors: Wells
Stitched Embroidery (Elmswell)

1st Team Sponsors: Mirror Group
Newspapers

2nd Team Sponsors: Elmswell Fox

(A) Team Sponsors: Wilsons Transport
(Elmswell)

Match Ball Sponsors: Rota-Rod (Bob
Barter), Travelstop (Elmswell),
Stowmarket Golf Club, Tulipa
Landscaping (Elmswell).

1st Team Manager: D Scase. Assistant
B Barter.

2nd Team Manager: P Smith. Assistant
T Warby.

(A) Team Manager: D Carter. Assistant
J McMillan.

Under 14 Sponsors: Abbots Estate
Agents (Manager P Case).

Match Ball Sponsor: W Jarvis
(Landscaping, Elmswell)

Under 11 Sponsors: D J Fishbar
(Elmswell). (Manager T Ingram)

Under 10 Sponsors: Village Homes
(Manager J Tuzinkiewicz)

Over 35 Sponsors: C G Finch & Sons.

Monthly Draw for September drawn by R McLagan

No 234	W Southgate	£50
No 86	M Bendall	£35
No 360	M Elliston	£25
No 122	Y Jones	£15
No 17	D Finch	£15



Fixtures up to Nov 23rd:

First Team

- 02.11.02 Orwell Ath (Away)
09.11.02 Mendlesham Kings Head
(Home)
16.11.02 Saint Clements Hospital
(Away)
23.11.02 Saint Edmunds 65
(Home)
30.11.02 Coddendam Country Club
(Home)

Reserves

- 02.11.02 Murray Raingers Res (Home)
09.11.02 Claydon (Away)
16.11.02 Benhall St Mary (Home)
23.11.02 B T Trimley (A) (Away)
30.11.02 Salvation Army Res (Away)

(A) Team

- 02.11.02 Barrow 2001 F.C. (Away)
16.11.02 Pot Black F.C. (Home)
23.11.02 Elveden Phoenix F.C. (Home)
30.11.02 Jubilee 96 F.C. (Away)

Under 11's

- 20.10.02 Bury Town (Away)
03.11.02 Stow Falcons (Home)
10.11.02 Melton St Audreys (Home)

Under 14's

- 03.11.02 Stow Falcons (Home)
10.11.02 Thetford Ind (Away)
17.11.02 Capel Colts or Bury (A) Cup
(Away)
24.11.02 Framlingham (Home)

Results:

Sat 14.09.02. 1st Team: Wenhaston
United (Away) drew 0-0. Res Kirton
White Horse (Home) won 7-6. Scorers
S Brittain 3, G Colman 2, P Hughes 1,
J Allan 1.

(A) Team: Rising Sun Res (Home) lost
3-0.

Sat 21st 1st Team: Bramford Road Old
Boys (Home) won 3-2. Scorers M
Peachey 2, D Thomas.

(A) Team: Jubilee 96 (Home) Mick

Around and About cont'd., pg 18

McNeil Cup won 5-2. Scorers S Church 2, S Bassant 2, G Colman 1.

Under 14: Sicklesmere won 6-3. Scorers M Hurrell 2, N Riggy 2, D Ireland 1, J Steverson-Wall 1.

Sat 28th 1st Team: West Row Gunners (Home) S J Cup. Lost 2-1.

Res: Bramford Road O.B. (Home) lost 5-1.

Sat 5th Oct 1st Team: B T Trimley (Home) lost 2-0.

Res: Westbury Utd (Away) S.P. Cup lost 8-0.

(A) Team: Elveden Phoenix (Home) lost 7-1. Scorer S Bessant.

Sat 12th Oct 1st Team: Saxmundham (Away) Lost 5-2. Scorers S Britton 1, J Irving 1.

(A) Team: Barons (Home) M M Cup lost 9-1. Scorer S Bassant.

We are still looking for someone to mark out our pitches either on Friday afternoons or Saturday mornings. If you could help us out, please ring B Hayward. Anyone wishing to join the football club please telephone B Hayward on (01359) 240951.

Training nights Wednesday nights Blackbourne at 18.15.

Compiled by H Mulley (01359) 240889.

CATHOLIC PARISH OF OUR LADY, STOWMARKET

Parish Priest:

Father Denys Lloyd,
The Presbytery,
29 Lockington Road,
Stowmarket IP14 1BQ
Tel: 01449-612946

MASS TIMES:

Saturdays (First Mass of Sunday)

Woolpit C of E Parish Church, 6pm

Sundays

Stowmarket (Our Lady's, Stricklands Road), 8.30am & 10.15am

Wattisham Airfield Church (first Sunday of each month), 12.15pm

Needham Market C of E Parish Church (second Sunday of each month), 12.15pm

Holy Days

Stowmarket (Our Lady's, Stricklands Road) 8am, 10am and 7.30pm

Weekday Services in the parish are listed at the front of the church at Our Lady's and in the weekly Newsletter. If you are unable to contact Fr Denys and need a Priest in a hurry, please telephone 01284-754358.

The Parish Representative in your area is: Mrs Hilda Jackson: Holly Cottage, Long Thurlow, Badwell Ash IP31 3JB. Tel: 01359-259944.

STOWMARKET CONCERT BAND

Stowmarket Concert Band is all set to round off an exciting 40th year with a couple of great concerts.

Before December's Christmas Concert, a Bavarian-style 'beer night' is in order, to be held at The Blackbourne, Elmswell on Saturday 16th November at 7.30pm. This allows everybody (including the band themselves) to partake in games galore, feast on a basket supper and listen to great music all at once, whilst washing it all down with a few drinks. Prizes will be given for the games and there is also the chance to purchase draw tickets for an original painting of St John's Church. Tickets for this event cost just £7 (including food) and are available from Pan on (01359) 242299.

Following this, on Wednesday 18th December, the Annual Christmas Concert takes place at The Regal Theatre, Stowmarket, at 7.30pm. As usual, this will include all your favourite



Around and About cont'd.,pg19

Christmas anthems along with an exciting mix of ancient and modern classics. Tickets cost £6 for adults, £4 for concessions and are available from The Regal Theatre Box Office. If the last couple of years are anything to go by, you'd better get them quick to avoid disappointment.

For any further details about booking or joining the band, please contact Pam on the number above.

BLACKBOURNE MANAGEMENT ASSOCIATION

The BMA now meets monthly rather than twice a year in an attempt to address all the management problems which have allowed the hall at Blackbourne to decline. At the October meeting, held in the memorial Library, the increase in bookings was noted and Lesley Reed thanked for her continuing efforts in this regard. Members were pleased to note that although wishing to resign from the post of Secretary to the Committee in the face of the difficulties posted by having to deal with the Parish Council, her work as Booking Secretary would continue. Peter Dow was elected without opposition to the post of Secretary. Alan Sparrow, who has been working for some weeks to produce figures fit for audit, has recommended that a line might best be drawn under the financial situation inherited from the previous treasurer, Cllr Ronald Curry, as the bookkeeping has not been adequately administered and various issues seem to be beyond provable resolution. Officially the position of Treasurer remains unfilled and the books unaudited. Members expressed the wish that Mr Sparrow be asked to act as Treasurer as and when he feels in a

position to do so. The Parish Council is to be further consulted regarding their having re-positioned the green lorry body storage container so as to cause obstruction, the disposal of the drinks vending machine, disabled parking, general lack of external maintenance, the need for wider consultation regarding proposed extensions to the hall and the vacation of the changing room which they annexed as a Parish Clerk's office.

ELMSWELL AMATEUR DRAMATICS SOCIETY

Well it only seems like a few weeks ago we were doing our dress rehearsals for Busy Body in 'high noon' heat and now it is dark early in the evenings, cold, wet with only Christmas to look forward to, **WRONG!!**

For EADS it means the start of panto time. Rehearsals are now well underway for 2003 production of 'Babes in the woods', which has been written for us by Paul Goffin. This panto includes all the original 'behind you's', 'ooh yes he did's' and songs but also a few modern idea's for us to entertain you with.

Auditions were held recently at the Wesley Hall and all those who attended enjoyed themselves, even those who felt a little nervous ended up with a smile on their faces. The casting panel would like to thank all those who attended and to say it was the hardest of decisions to make their final choices, with perhaps the exception of the Dames!! We are still on the look out for backstage hands, and if you are interested in this important part of the production please feel free to contact our Producer Sue on 01359 259062, or Sarah 01359 242342 for more details. You never know you may enjoy yourselves so much that you fancy being on the stage next time!!

Well enough about the future, what



Around and About cont'd.,pg21

about the past year. In June the group produced *Busy Body*, a humorous 'who-dunnit' with Val Wil?? as the nosy parker office cleaner Miss Piper who thought she knew better than grumpy Superintendent Baxter, played by Rod ??? with a supporting cast who all had good reason to murder the victim, soon to become victims!! The play was well received and well supported, even though the world cup was trying to upstage EADS. Our thanks to all who worked so hard to make this a thoroughly enjoyable production. A special thank you goes to the Parish Council who granted our request for help funding the royalty charges, this made a big difference to our outgoings on the play and, although we are not a profit making group, we do prefer to have funds left over to help produce bigger and better productions for you, the community, to enjoy.

During the summer the adult members for EADS ran various workshops for our junior section. This entailed learning many different aspects of a production including acting, speech, production,

directing and even program designs. We were all pleased with the numbers, who attended, a few familiar faces returned, and encouragingly many new faces came, some of which will be in the next pantomime.

For those of your organised enough to have a diary or calendar for 2003, get a pen and make a note of our performance dates. First night will be Wednesday 29th January through until Saturday 1st February and as in previous years we will preform a matinee on the Saturday afternoon. As for the tickets going on sale this date will be publicised in due course. If your local group would like to come en-mass for a night / afternoon out together, then please book early. You can do this now if you wish by telephoning Jon Barber on 10359 244002 with numbers and your chosen date, but please don't delay as we already have one brownie pack booked.

For further news on the pantomime and EADS then please look us up in next months newsletter as we will be, from now, a regular contributor to the community grapevine.



TaxAssist Direct

**The Tax and Accountancy Service for
Small Businesses and Taxpayers**

Self Assessment, Tax Returns, Annual Accounts, Book-Keeping,
Employed, Self-Employed or Starting a New Business

For a free initial discussion without obligation call
Clive Jenkins. Tel/Fax 01359 242284


4 Page - "Talking allowed" *Special* LOSING OUR FOOTBRIDGE



As reported in last month's edition, the Parish Council, in extremely questionable circumstances, decided at a quietly convened 'extra' meeting on 27th August to apply for permission to build a house on the greenspace at Crown Mill. This site had, since April 1994, been set aside as the site for a future footbridge link over the railway line from the Bennett Avenue, Eastern Way, Crown Mill estates and the school to the Blackbourne Estate, the community centre etc. The planning permission which established the footbridge site did so, 'to secure a comprehensive footpath system in this part of the village in the interests of road safety.'

The Parish Council's application to vary this condition so as to allow the building of a house on the site was made with breathtaking speed - within a week of the Council's hairsbreadth decision - by 4 votes to 3 - having been taken (Kiln Meadow volunteers eat your hearts out!) It describes the land as having, 'no designated use.'

The public response, some of which was forwarded to the Newsletter, has been considerable. We do not have room for all the letters but have done our best to represent all the points raised;



From Alan Crouch, Cooks Road
I am deeply perturbed by the way in which the Parish Council is handling the proposed sale and development of the greenspace opposite Crabtree Meadow.

This piece of land was given to the VILLAGE in hard fought negotiations with the developers or Crown Mill and it is not for the Parish Council to dispose of willy-nilly and without due consultation with the Parishioners because a few children happen to play on this ground and upset Curry and a few of his cronies.
If our Councillors have any thought for the villagers that they represent they should vote against this application and call a Village Meeting so that the views of all of those affected can be heard and not just fall in line with the personal wishes of Curry, Clark and Marriott.



From Julia May, Battenhaugh House, Ashfield Road
In recent years there has been considerable housing development north of the railway (with more to come) separated from village amenities, i.e. school, Post Office, library and Co-op stores, by the railway. Currently the main pedestrian access is across the level crossing bringing pedestrians in close proximity to the ever-increasing heavy traffic that services the housing and industrial areas north of the railway. Similarly, Elmswell residents living south of the railway who wish to use the community facilities at Blackbourne and other amenities either run the gauntlet of the level crossing or use their cars to the general detriment of our environment. The previous Parish Council fought for this footbridge as part of the planning permission for the Crown Mill development in 1994, and in my opinion its building is long over due, as it is for the benefit of the community of Elmswell. This footbridge has been on the agenda for Elmswell since building started on Crown Mill and is most definitely not "pie in the sky".

From Philip Shaw, East View, Ashfield Road

Erection of a Two Storey dwelling at Crown Mill, Elmswell.
Reference: OL/123/02

I wish to place on record my objection to the above application.

In February 1999 The Planning Inspectorate overruled Mid Suffolk District Council's refusal to grant planning permission for the erection of a footbridge over the railway line, on land between Crown Mill and the public footpath No 10, Elmswell. In his findings the Inspector agreed that 'the bridge would be a positive future element for the village as a whole, linking footpaths and neighbourhoods safely and that it would go some way towards meeting national advice in Planning Policy Guidance Note No 13, SP Policy T1 and the County's measures to improve routes for pedestrians so as to encourage the priorities of walking and cycling.' Having considered the alternative of improving access over the railway at the level crossing, he concluded that a 'pedestrian footway at that point would do little.' He stated that 'the footbridge was a feature foreseen by the highway authority, the local planning authority, and the Parish Council when planning permission was (first) granted for the Crown Mill development.' He also stated that 'now that much of the development on both sides of the railway is complete he did not believe that planning permission should be withheld.' He emphasised that 'if ownership or operational functions precluded a footbridge, this was not a planning matter.'

More than three years later nothing has changed: except that the village now has more houses, more traffic, more trains - and all likely to increase further for the foreseeable future, not least because there are currently over 100 houses with planning permission and waiting to be built, or being built, in Elmswell. This figure will increase dramatically as other sites in the village become available for significant multiple development, e.g. the O.C. Jewers' site on New Road which has the potential for, say, a further 70 houses.

From E J Kiddy, Ashfield Road

A bridge is needed, and its need is increasing, and will continue to increase, as Elmswell continues to be developed, more houses, more people; and the existing crossing, rail crossing North to South, South to North becomes used by more people, of wide ranging ages competing with ever more traffic of all kinds, on road and rail. Government initiatives encourage less use of motor cars for local, short journeys the footbridge would directly enable reduced car use for visits to the Primary School, Library, the Blackbourne, social visits and many more.
The competition between people, especially the adults with young

There is no need for yet another house in Elmswell, particularly one on this specific spot, as the range and number of dwellings planned or under construction will deal adequately with the current demand. Not only would the proposed development remove yet another 'green space' and produce an overcrowded result but, most importantly, it would remove for all time the chance of providing a footbridge over the railway line.

Whatever the state of its coffers, the Parish Council has absolutely no need at this time to realise short-term financial gain by selling Elmswell's long-term vision and benefit.

Whilst I acknowledge and understand that consideration of planning applications must follow strictly defined procedures, and that purely emotive issues cannot be part of such procedures, I am obliged to record my personal confusion and deep cynicism over this application.


Given that the application is being made by the Parish Council, under the Chairmanship of Councillor Ronald Curry, it cannot be overlooked that that same Chair, then as *citizen* Mr Ronald Curry, was also one of the prime movers in the campaign to have the original planning application for a footbridge turned down by the District Council. Incidentally in response to those 'local residents (who) were concerned that there was no mention of a footbridge on Local Land Charge Searches' The Planning Inspector concluded that that was 'a legal matter between the (District) Council, owners and their solicitors and was not a planning issue.'

There is no merit whatsoever for the community of Elmswell in this application. The only ones to benefit will be those few individuals, now Parish Councillors, who seem determined to sell off a village asset simply in order to overturn the earlier decision of a Planning Inspector who had, himself, quite properly overturned Mid Suffolk District Council's refusal to grant planning permission for a footbridge to be constructed, at some future time, for the benefit of our community.

children and babies, and shopping bags, etc., and people who are unstable on their feet, is intense NOW, likely to become much more intense.

I do not want any one to have to experience the terrible trauma my wife, myself and my family went through when our 11 year old son was run over by a lorry, on his return from school, he died from his injuries, next day.

It is imperative that the planning for a house on this site @FAILS, and so retaining it for this purpose for which it has been fought for,
"THE FOOTBRIDGE"



From Mr D M H Sixsmith, Elliston Close
Do we really need yet another house particularly at that site which the developers had never envisaged; together with privacy problems and consequent loss in value for neighbouring dwellings.
It is a real worry to me that if the District Council allows this application it will DENY for EVER the chance of a footbridge ever being provided for the village which would seem odd at a time when use of cycles, walking should be encouraged.

From Dr John Dodds,

So why is it so important and so urgent to apply for the permission to build a house on a site reserved for the erection of a footbridge? There is one answer only to that erection and it has nothing to do whatsoever with any excuses being put forward now. It is a device simply to prevent the erection of a footbridge on any future date to the detriment of many and to the advantage of a few. NIMBY is the mnemonic "NOT IN MY BACK GARDEN."

There is a total disregard by the supporters of this house building scheme of the need of any disabled person, young family with children, indeed of any family at all who might prefer to access the school, shops etc in safety ON FOOT via the footbridge without having to run the gauntlet through the level crossing on foot, by bicycle or wastefully by car.

It is a terrifying thought, but do we need one serious injury or even death at the level crossing to prevent this planning or even death at the level crossing can there be in leaving madness? What possible harm can there be in leaving the site as it is to allow future generations to decide in the fullness of time. When such a footbridge might be erected? What is all the hurry for?



From Mr R Durham, Warren Lane

The footbridge was confirmed as a village amenity in 1999 by a Planning Inspector, who granted planning permission for its erection. That was 4 years ago and in my opinion this facility is even more necessary now with the huge growth in population and increase in road and rail traffic since that time. Indications are that these factors will increase greatly in the future in a busy and thriving village.

I hope, therefore, that the Planning Department will reject their application.

see over ...

The application came back to the Parish Council for their comments prior to consideration by Mid Suffolk District Council. In order to discuss it, along with several other applications (see our Parish Council Report), the Planning Committee was convened. The Planning Committee has not been heard of for 18 months. The meeting was postponed from a Friday to a Wednesday – when England were playing. The meeting was not advertised on the notice boards, only on the official board at the Co-op. The meeting still attracted 26 members of the public, most very obviously determined to make their opposition felt.

What the majority of those at the meeting did not know was that Mid Suffolk's legal department had spoken with Cllr Ronald Curry. Their legal department has been heavily involved, in tandem with The Standards Board for England, in the investigation into how this planning application had been made. The case has gone to an Investigating Officer of the Standards Board on the basis that there are grounds for serious concern. The advice given to Chairman Curry was that both he and Cllr Marriott might, even if they remain obstinate in their refusal to declare a *prejudicial interest* in the matter of the footbridge site, leave the meeting whilst it was discussed. As Cllr Talbot had not managed the journey from his new home on the other side of Cambridge to attend, the ruling group's majority was not safe if its leading lights were to do the honourable thing and depart. So they stayed, and Cllr Curry simply took the matter off the agenda. Job done.

Cllr Marriott, proposed by Cllr Curry as Chairman of the Planning Committee, later confirmed that the matter would not come before the Parish Council again and that Councillor's views would not, therefore, go forward for consideration by the Mid Suffolk Planning Committee. No dissent possible. No public comment allowed. Job well and truly done.

The application will probably be considered by Mid Suffolk on 2nd December. Until that date, letters for consideration by the District Councillors who will decide the matter will be accepted by The Planning Control Manager at the Mid Suffolk Offices in Needham Market, IP6 8DL. The reference number is OL/123/02.

... And to sum up ...

From Mike Schofield of Fairmead

I must congratulate Elmswell Parish Council on its recent decision to apply for planning permission on the Council-owned plot in Crown Mill, designated for footbridge provision. It has somehow managed to exceed even its own recent standards in open and honest decision making. It has allowed itself to be swayed by two of its members into making a decision of direct financial benefit to those members. Further, those two members decided that it was not necessary to declare a financial interest, took a full part in the ensuing discussion and then voted in favour! Would any reasonable member of Elmswell's community like to explain how ownership of adjacent properties whose value could adversely be affected by a footbridge does not constitute a direct financial interest? Perhaps Councillors Curry and Marriott would like to offer their own explanation?

This, of course, is not just an issue about a footbridge. Indeed I do not know whether one is justified or not. It is now an issue about the abuse of trust and authority placed

in our elected representatives. But, of course, it is not the first time that the present Parish Council Chairman has tried to use his authority to prevent the footbridge from being built. His involvement in 'Elmswell Committee against the Footbridge' (ECAF) is well documented. What is perhaps less well known is that he also effectively threatened to derail the Village Appraisal process unless a direct question about the footbridge was removed from the draft questionnaire. As Chairman of the Appraisal Group I was aware that it would not take place without some Parish Council support and I reluctantly agreed to include a vaguer question about the crossing over the railway.

I hope now that the entire village can see the shameful manoeuvring and abuse of power which has been taking place within our midst.

The elections in May cannot come soon enough, but the proper course of action would be for the entire council to repudiate this decision and for its two architects to go now.



ANNUAL VILLAGE QUIZ

There were 20 teams this year. Experienced eyes scanned the steady trickle of team members as they stood entranced by the dazzling display of draw prizes arrayed in the entrance lobby at Blackbourne. A frisson of excitement...EADS hadn't turned up...last year's rollercoaster winners abandoning their crown! A groan as various ex-Fox quiz superstars were spotted looking lean, determined and a bit bright on the table labelled, 'Archimedes' Crew'.

It was close. Anthea Turner nestled up to Anne Boleyn - but which of them was the first female presenter of the National Lottery Live? Clarence Birdseye invented frozen food, and Bobby Charlton was capped 106 times, but are we sure what a capercaillie is?

Only 9 points from a possible 115 separated the top 6 teams, with the bookie's favourite, Archimedes' Crew, taking the Muriel King cup and copious bottles of wine by just 4 points from the Over the Hill Mob. The latter, however, having declared themselves as the official Elmswell Toddlers team, won a £50 cheque for the organisation. £30 also went to the Luncheon Club courtesy of the remarkable performance of Dickies Diner who, under the rigorous command of Dick Burch, came 4th overall. The third community team were the Cricket Club, their best result of the season earning them £20.

£50 also went to the Stowmarket Gateway Club, one of whose supporters provided the questions, and a substantial donation went through to the bar as a thank you to Andy Pike whose team are holding the fort as Andy struggles to recover from a recent serious stroke.

John Reed was the impeccable MC for the evening, positively the last time he says, and means it. His unique style did much to help establish the Quiz as a major community event in the early years, and he has continued tirelessly since. In this, as in so many Elmswell enterprises, his involvement has been invaluable and our thanks go to him.

Thanks also to Muriel King for organising a superb half-time buffet, to Roy Finch and Stephen de Sautoy for impeccably polite, sartorially faultless waiter service throughout a busy evening, and to John Ibbetson whose scoring needed not a single query. For donations and other help, thank you Eileen Brooks, Jean Folkard, Doug Reed, Carol Reilly, the Blackbourne Management Association, Goblin Wholefoods, Burnett Barker, Paddy Butcher, Dominote & Jean Barker.

The Quiz is organised by a volunteer group from a Working Party of a Sub Committee of the Events Co-ordinating Council of the Amenities Association - Peter Edmonds, Graham Newman, Peter Dow & (in spirit) Terry Southgate.

YOUR ENVIRONMENT

Our cover picture shows, almost literally, a picture postcard image of Elmswell. However, a closer look reveals that the hard work and community initiative needed to maintain a neat, tidy and safe environment is not evident in our village.

Why not? For years Elmswell lead the way in progressive environmental ventures; the station was saved from demolition and put to good & profitable use...a wildlife area was created out of desolation at Kiln Meadow...Blackbourne Meadow was established at no cost to the village from planning gain...Crown Mill... the Village Sign... the footbridge site...there was a lot to do, but it was being done.

A Letter to your Newsletter from Parish Councillor Mrs Mary Feeney throws some light on the subject;

Further to the article in last month's edition on the September Parish Council meeting, which reported my resignation from the Parish Council's Environment Working Party, I would like to explain to the village my reasons for taking this action.

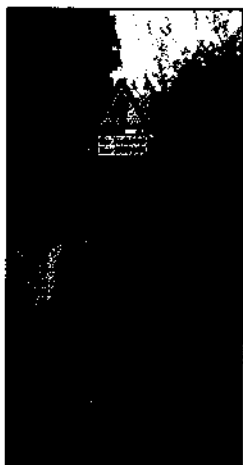
I have worked hard over the last year to carry out the remit of the Working Party, even though the bureaucracy imposed on us has meant that progress has been painfully slow. The Working Party has drawn up a comprehensive schedule of improvements for each of its areas of responsibility – Crown Mill, Thedwastre Close play area, the cemetery and allotments, and the recycling centre. It has also addressed other issues when asked to do so by Council, including the siting of new doggy bins, grass-cutting in the village, fly-tipping, repairs to benches and seats, the possible introduction of wheelie bins for refuse collection, care of trees and hedges at Blackbourne Meadow, and the appointment of a street cleaner. We also began to plan a tree and shrub planting scheme for the village.

However, I am not prepared to continue leading this Working Party when its contribution to such an important and controversial issue as the review and disposal of green space at Crown Mill has been so comprehensively sidelined. At its meeting of 19th November last year the Parish Council voted that this review should be carried out by a coordinated group of the Environment Working Party and the Finance & General Purposes Working Party, with the presumed intention of providing a balanced view which considered all the options. A second resolution of 20th May this year authorised the Environment Working Party to draw up a shrub planting scheme for this area. Both of these resolutions were swept away by the decision made at the September meeting to accept the F&GPWP's recommendation, taken in isolation, that this land should be sold for building, a decision which I believe to be unlawful and undemocratic.

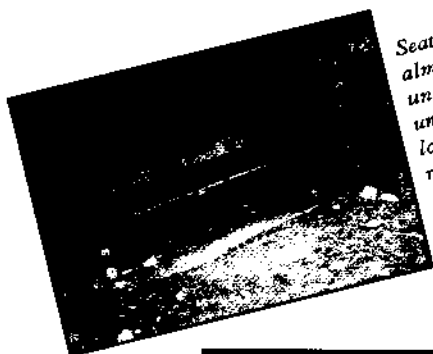
Many of the Working Party's recommendations have yet to be implemented and I am aware that this is a constant source of frustration to the village. Even though the Environment Working Party has fallen apart, rest assured that I will continue to work at getting these things done. Please continue to bring any environmental concerns you may have to me, and I will do my best to get them addressed.

... pages 31 & 33 – see how 'progress has been painfully slow...'

We had a look on your behalf and saw;



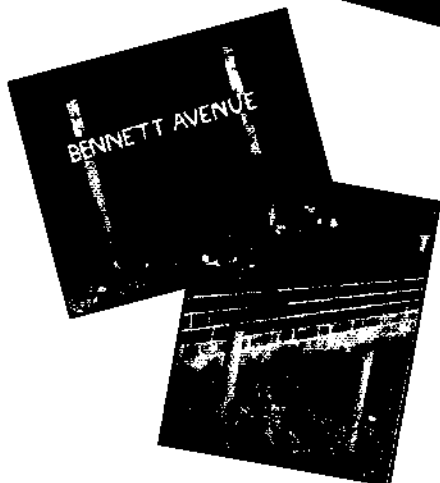
Warren Lane - 'No Footway' ...still...despite several election literature promises... the Parish Council inherited a scheme ready to go - so far no go



Seat at Blackbourne - almost lost in the undergrowth of the uncut hedge...litter bin long gone and never replaced...idyllic country scene?



grit bins - owned and "maintained" by the Parish Council - a health and safety priority?



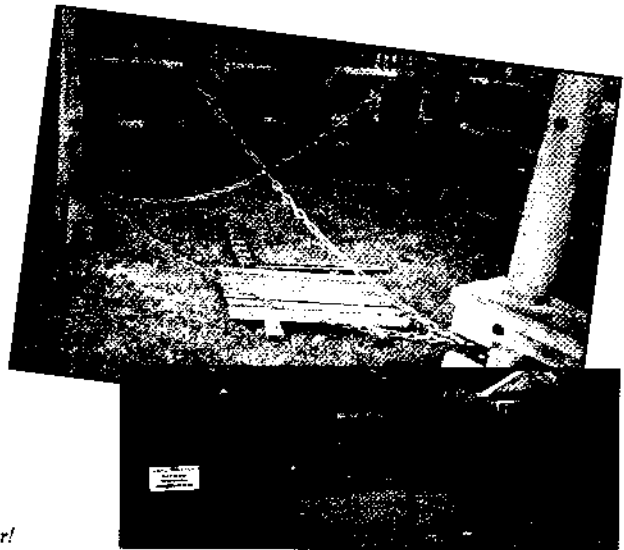
Missing street signs - a Mid Suffolk responsibility, but only if the Parish Council liaises with them ... the Bennett Avenue sign has been gone for so long, someone has made one!



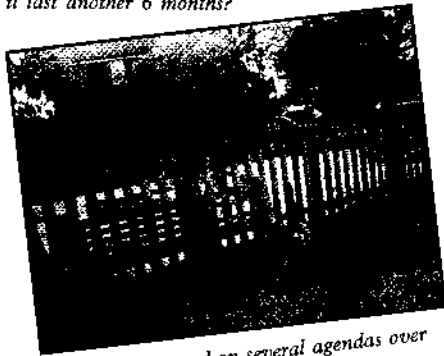
One of a dozen litter/doggie bins to be re-instated, renewed or re-sited. This one removed by contractors installing a new telegraph pole 6 months ago



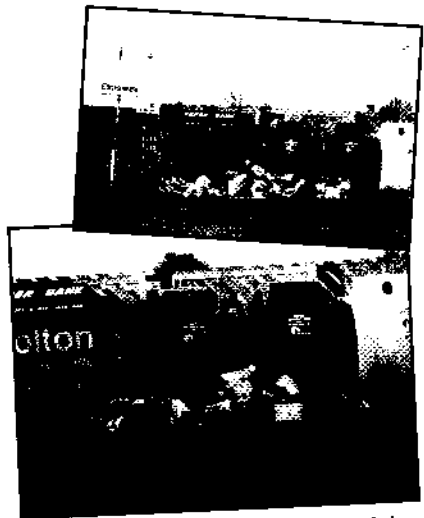
The village sign is falling over! Subsidence? Callr Clark is maintaining the situation. For a year it has been monitored. Will it last another 6 months?



Crown Mill Play Area, unfenced, unsightly and unsafe ... as it has been for more than 18 months



Seats - as featured on several agendas over the past 3 years ...



The bottle bank - overflowing time and time again ... who to contact? ... the relevant information notice was removed and never been replaced ... 8 months ago

There is hope! Traditionally, the approach of an election means that people begin to matter...that their concerns had better be addressed.

Almost exactly 6 months left.

From Sue Cobbold of Crown Mill

The Chairperson ... is just plain rude ...

I attended the Parish Council Meeting on 16th Sept 2002 (only the 3rd one I have been to) and came out midway through totally frustrated and angry.

I have attended various different meetings in the past but none run so appallingly as this. The Chairperson seems to have rules of his own, will not listen thoroughly to people's comments and is just plain rude. He only seems to discuss issues he wants to. What sort of impression would someone new to the village or someone attending a meeting for the first time get? (total disgust, I would imagine).

How can anyone like myself go to a Council meeting to discuss an issue regarding facilities for the youngsters in the village, stand a chance of stating their opinions when Cllr Curry doesn't seem in the slightest bit interested - and if he's not interested the subject is closed!!

I fully appreciate a meeting of this kind has a lot of issues to discuss in a short space of time and someone has to take control of the situation but surely there is a way of doing this and I do not think by any stretch of the imagination Cllr Curry does it the right way!

From Julia May of Ashfield Road

... kicked in the teeth by some on the Parish Council ...

I can't believe the Parish Council could not have arranged insurance cover for the Kiln Meadow volunteers. I, for one, have never done an ounce of work there and only have admiration for the volunteers who give up valuable time to create these lovely places for us to walk and enjoy.

The people that gave their time and efforts must feel like they've been betrayed and kicked in the teeth by some on the parish council. May I take this opportunity to thank all the volunteers, not only for Kiln Meadow, which my husband and I have enjoyed walking to and admiring but also for those who keep footpaths passable. Let's hope the few council members making life difficult will soon get their act together and find suitable insurance.

This is a good, well served village with a lot of parishioners putting a great deal of time and effort into its future. It's a shame that some of the parish councillors, and we all know who they are, can not take off their blinkers and work for the benefit of the community as a whole.

From Sandra Hurrell, Warren Close, Elmswell

"The sorry state of Kiln Meadow"

I was very sad to see what had happened (or rather not happened!) at Kiln Meadow. The meadow is now so overgrown and unmaintained that even the wildlife are struggling to take up residence and for why? - because the Parish Council can't get their act together over the insurance problems. Surely it wouldn't take that long to sort out - a fraction of the time that volunteers have spent maintaining what was once a very pleasurable place to go.

Is it any wonder that Alan Thompson has washed his hands of it? You can only stand so much. My thanks go to him and all the other volunteers and hope that one day if the Parish Council ever get this sorted out, I'll once again be able to walk my dog in these lovely surroundings.

From Marie Brinkley and Wendy Patey of Cooks Road

... Special thanks ...

The Annual Rick Brinkley Memorial Darts evening was held at the Railway Tavern and we would like to extend special thanks to Chris and Debbie of The Railway Tavern for hosting the event, also to all players for their support. Congratulations go to Ray Kerridge who won the five set final against previous winner Brian Hawes.

The total raised was £263.00, which has been donated to Cancer Research U.K. This being made possible by generous donations of draw prizes, for which we were very grateful. So a big thanks to: The Railway Tavern, Eric King, Roy Finch, Jim Cole, Roger Dolby, Brinkley Builders, Stella and Ted Smith, Lawrence Gregory, Ronnie Palmer, The Elmswell Co-op, Major Patey, Midway Stop Cafe, and to all those who wish to remain anonymous.

Hope to see you all again next year.

From Sarah Jobbins of Little Elms Pre-School

Help - we need somebody

During the last twelve months negotiations have been going on to enable the Pre-School to build a permanent building within the school grounds. Some preliminary investigations have taken place and up until now I have been handling this project.

Due to a change in my personal circumstances I am unable to continue to lead this project, so we are looking for someone who can put in the necessary time

and effort in order that the Pre-School can achieve this much needed facility and continue to thrive within the village.

The current portacabin has a very limited life left in it and the planning application to keep it in its current position expires in 2004. There is some doubt as to whether or not it may be renewed and if so far how long.

Given that the population of Elmswell is about to have a small spurt of growth, with all the new houses being built, the portacabin will also not be large enough to accommodate all the three year olds resident in the village. So the new building already has two very strong reasons to support its requirement.

Along side this, after all the work the staff and committee have achieved in the last eighteen months, meeting OFSTED's standards and fulfilling a much needed requirement for three year olds in the village. It would be a horrendous shame if this project was not fulfilled for the community as a whole.

There are several people ready to work on this project but we need someone to lead it. Wouldn't it be a great shame if this much used, much required and much admired facility in the village was lost to us all.

If you can help, please contact Sarah Jobbins 01359 242316 or come and speak to the staff at the portacabin.

From David Sixsmith of Elliston Close

Wetherden Footpath One

After battling since October 1995 and finally enlisting the help of David Ruffley, I have this morning been the first person with Lucy my dog to walk the re-opened path. It runs from:

Grove Lane, Botany Bay Corner (005646) through the linear copse, a dogleg into the farm and via gates to the Wetherden Upper Town road by Darsham's Farm entrance (099638). It has been waymarked throughout. The work was the responsibility of The Central Area Rights of Way at Gt Blakenham 01473 830010). Perhaps you will find the time to enjoy it as it adds another circular walk - returning through the Mutton Hall 'access' land. Please tell others.

A Queztion of Honour

Reading the September Edition of Newsletter, I felt impelled to write another letter. The inspiration came from the picture of a Spitfire, I would say probably Mk.5B. It may be a long time since I served, but the memories are always there. Sixty One years have passed and I still have photo's to prove it. I am now eighty

severn, and have lived in Elmswell since 1929. Hence I think I am able to distinguish the good from the bad as I have seen it over the years. I was born and raised in London NW 10, at the age of fourteen I was sent to my Grandma in Elmswell to seek work as there was a slump on at the time. The Jarrow Marchers set the vogue.

I have played an active part in the village in Sport, Football, Cricket, Tennis, The Cub, Scout, Rover, Group was second to none in the Area. The Rev. J.D. Sayer was Rector, and we used to play Billiards and Tennis at the Rectory, not to be confused with the present day modern Rectory.

The Bacon Factory, a Farmers cooperative concern was an active Employer, I was employed there for thirty eight years. When W.W.2 started I joined as a Volunteer and spent Five years with the R.A.F. the first two and half with Spitfires, Mk. I to Mk.9. attached to a Canadian Squadron, 421.

When the War in Europe finished I was in Hamburg, from where I was demobbed. On my return I joined with others, from the village to pay respect to those who gave their all and did not return, from Two World Wars.

We raised the funds, for a Memorial Hall. The cost was met from funds gathered, the land, formally a tennis court was a gift for a specific purpose, i.e. a memorial. Erection was by volunteer labour, I did my bit with others. Mr Chamberlayne (solicitor) was the Donor of the plot.

The Village expanded at this time, and fresh faces appeared. One person with an ego bigger than a double decker bus became hell bent on changing everything that this place was, he succeeded in running the hall down, until he could legally claim it was unfit for use. The Library was built on what was formally a Bowles Green, this was not part of the Memorial sight. Now they have the Gall to call it the Memorial Library. To see the site of our Memorial Hall now is both distressing and disgusting, truly unpatriotic. This was all done by a person who by guile and promises got the reins and even persuaded the Royal British Legion, that because the word Memorial didn't appear in the Deeds it was not a Memorial. I am informed that the destruction of our Hall paved the way for capital for the Blackbourne project. I did not give my time and labour for that purpose, dictatorial direction gave me no choice. I served with, and knew those boys, respect costs very little.

In my opinion, a Memorial, once built at no cost to the Local Authority then becomes a charge on them to maintain, this was bypassed by the fact that this person got himself in a position whereby he dictated the venue. In all the years that I have lived here I Know of nothing that approaches the disgust that I feel for this act of indecency to those who gave these people the Standard they have today. Greed and Ego, what a combination.

Now I read of the ongoing conflict and niggling between present day and former

powers that be. I feel that if this modern generation has so little respect for those who bore the burden of two wars, perhaps a little military service would serve a useful purpose. It may be said, time does not stand still but respect in the minds of others, and relatives still living, deserve just that. Time only dims memories it does not forget.

I wonder if the Historians who are writing the Village history will include the fact, that Elmswell did have a memorial to the Sons of this place, who paid the supreme price for freedom.

EX L.A.C. R. EYRES
(attached) 421 Sqdn. R.C.A.F.

From Church Wardens Valerie Rogerson and Derek Blackman of St John's Church

Appointment of Rector of St John the Divine

As some of you may be aware the P.C.C. met with the candidate for the vacancy of Rector and we can report that the meeting went well, but we are unable to give a statement at this time.

Various legal and official procedures with the Diocese must take place before any official announcement can be made.

We would however like to thank you all for your prayers and continued support during this time of interregnum.

From Ted Pratt of Thurston

WANTED!

BROADBAND ACCESS 01359

Would you like to have ADSL Broadband access in the 01359 capture area? BT will only consider offering the service if approximately 400 people or businesses register their interest via an ISP (Internet Service Provider) e.g. Freeserve, Tiscali etc. I am trying to let everyone know how to do this as simply as possible. Just follow the instructions below.

Note:- You are not signing up for anything, just registering interest. Please send me a mail if you need further help - teds@screaming.net.

- 1) Type the following URL into your browser
https://broadbandaccess.freeserve.com/signup/welcome_ref.cfm
- 2) Click Continue
You will see a message "I do not have a Broadband Reference Number"
Click on CONTINUE

- 3) You will see the message "To check availability and to register please click continue." Click on CONTINUE
- 4) You will see the following message
Enter your phone number
Please Enter Number here
- 5) Enter your telephone number. Click on CONTINUE
- 6) You will get a message letting you know that "BROADBAND ACCESS IS NOT AVAILABLE IN YOUR AREA". Click CONTINUE to register your interest. Enter your name, address and Post Code. Click CONTINUE.

That's it all done!

Check the number of people registering at:-

<http://www.adslguide.org.uk/availability/btprereg.asp#filter>

CURRENT NUMBER OF PEOPLE REGISTERED 53 (13th Oct 2002).
Only 347 to go, please be one of them.

Dieseldcare & B Starie Motor Engineers

Unit 1 Thurston Granary — 01359 232114 or 0802 278042

- * Fixed price servicing, major service from £48 including parts
 - * Interim service from £35 including oil and filter
- * Unipart clutches supplied and fitted (2 year guarantee) from £98
(Escort 1.3 MK3 80-90)
- * Mechanical repairs, MOT preparation, all makes including light commercials
 - * Diesel specialist, injectors, injector pumps reconditioned
 - * Exhaust emission problems, starting problems
 - * Engine management & electronic ignition diagnosis
 - * Starters and alternators supplied

**ALL AT VERY COMPETITIVE PRICES
ALL MAJOR CREDIT CARDS ACCEPTED**

PARISH COUNCIL

Planning Committee

As reported elsewhere in this edition, a Planning Committee meeting was held at the Blackbourne on 16th October. The Planning Committee comprises all Parish Councillors and has met very infrequently under this administration, the last time was some 18 months ago. No minutes of that last meeting were presented.

26 members of the public had spotted, squirreled away amongst the agenda items, the Parish Council's own application to build a house on the footbridge site at Crown Mill. They had, in the main, come to make their objections known (see our centre page feature).

Cllr Ronald Curry opened the proceedings by informing those gathered that he had, on the basis of advice from Mid Suffolk District Council, decided to withdraw the agenda item relating to the loss of the footbridge. The advice from the District Council, who have the final say in planning matters, was that, if the meeting were to include the footbridge site application, then Cllrs Curry and Marriott should withdraw from the meeting. The implications for the usual safe majority of which Cllrs Curry and Marriott invariably form part were obvious for all to see. The inevitability of the withdrawal tactic was equally obvious.

Mid Suffolk's advice came, presumably, in the light of the serious nature of allegations under investigation by the Standards Board for England regarding Cllrs Curry and Marriott in the matter of the footbridge site application. It was confirmed that the matter will not now come before Parish Councillors for their views.

Public comment was permitted on agenda items only. The footbridge site was no longer an agenda item. Nevertheless, various voices were heard above the discontented murmurings. The view was expressed that Council might take the opportunity to seek less destructive ways to ensure that Cllr Curry can live at peace with his neighbours. Councillors' attention was drawn to the Village Appraisal wherein a large percentage of villagers were in favour of a safer railway crossing. It was suggested that, should the site be sold to a developer, the name of the house built should be 'Curry's Revenge.' The comments were politely noted.

Cllr Curry proposed Cllr Marriott as Chairman of the Planning Committee. This was seconded by Cllr Clark and Cllr Marriott was elected unopposed without a vote.

A member of the public expressed surprise that an application which he had made was up for discussion when no site visit had been undertaken by Councillors. His complex plan, he argued, could not adequately be assessed from the paperwork available to the meeting. Cllr Mrs Mary Feeney observed that, although the Council's

Planning Policy (available at <http://you.genie.co.uk/elmswell.pc/index.htm>) clearly states that site visits are an integral part of the Council's planning responsibilities, she was unaware of any such a visit having ever been arranged. No reason was forthcoming for this inadequacy of practice and procedure which was reinforced when Cllr Curry spoke of a visit he reported as having made to the rear of the chip shop in School Road where he could not see that there is adequate room for the siting of a mobile home as applied for. The public made it clear that they, and presumably many other villagers, were fully aware of a large, green, shiny mobile home already well established on the site and clearly visible from the road. Amongst other suggestions proffered from the floor was the possibility that Cllr Curry had visited the wrong chip shop.

Councillors went on to oppose the application at the chip shop for the retention of the mobile home on the grounds that there are adequate housing alternatives available, to oppose the erection of a dwelling at Haysell, Warren Lane as being an over-development posing access problems and to oppose the erection of a dwelling to the rear of 3 houses fronting New Road as being, 'backland development of the worse kind'. No objections were made with regard to the pollarding of 2 lime trees in New Road, to various extensions and improvements at East View, Ashfield Road, to extensions at 74 Eastern Way and 92 Bennett Avenue or to revisions to the existing outline permission for a bungalow at Ekfield, Wetherden Road.

Council Meeting

Immediately following on from the Planning Committee meeting, with just 9 members of the public remaining, a meeting of full Council was convened to discuss the appointment of an interview panel for the post of Clerical Assistant to the Parish Council. Chairman Curry informed the meeting that an application for the post had been received. Various people were known to have applied for the position. It was not made clear how this had been shortlisted to one applicant.

Despite objections on the grounds that no job description or contract of employment had been before Council, and after much procedural fumbling, Cllrs Curry, Clark and Crook were voted delegated powers to appoint, with the Parish Clerk in attendance.

Under Any Other Business, Chairman Curry then informed the meeting that the Parish Clerk had, in fact, resigned. Suggestions that this knowledge might have changed Council's thinking on appointing an assistant to help someone who wasn't there were not accepted by the Chair for discussion. The likelihood of a resignation had been widely expected following the brave showing at the last meeting of full Council when the Clerk, asked to advise Councillors on the way forward in the vexed 'footbridge' debate, had clearly recommended deferment of the matter pending legal advice. This advice having been rejected by Chairman Curry, the Clerk went on to assure the meeting that her position would be minuted. The inevitable clash when the minutes were drafted could well have been a final straw.

The resignation takes effect from 8th November. Without reference to Councillors, Cllr Curry has appointed himself Parish Clerk until a replacement is found. This will be the 5th Clerk to serve over the 42 months of the current administration.

Cllr Curry went on, again without reference to Councillors or to the procedural rules laid down in Standing Orders, to cancel the meeting scheduled for 21st October on the grounds that the Parish Clerk had not had an opportunity to prepare the necessary papers.

No public notice of this was given and some people did arrive at Blackbourne for the cancelled meeting.

STOP PRESS The October meeting will now be held at 7.30 on Tuesday 29th AT The Blackbourne. A lengthy agenda includes;

- **the abolition of the public's right to speak on general matters of concern**
- **the termination of the Kiin Meadow Wildlife Site scheme**
- **full funding from the community charge for a Parish Clerk's office etc. tacked on to the hall at Blackbourne**
- **the beginning of the process which will mean only 4 Council meetings each year.**

Do Come.

Peter Dow

P H PECKHAM

Plumbing and heating



- Corgi Registered
- Solid Fuel, Oil or Gas
- Boilers Serviced
- Bathroom Suites Installed
- Water Softeners Fitted
- Tiling

* 24 Hour Call-Out. * Free Estimates

28, Eastern Way, Elmswell. Tel: 240 958
Mobile: 07802 642884

What's On in Elmswell ?

To be included in our events diary make sure you send separate notification of your announcement.

October

- Kiln Meadow Fungi Foray
CANCELLED
- 28 Soft Furnishing and Upholstery - 9.30am until 12 noon at the Blackbourne
- 29 Keep Fit for the more Mature - 10.30-11.30am at the Blackbourne

November

- Kiln Meadow Tree Planting
- IF PERMITTED
- 4, 11, 18, 25 Soft Furnishing and Upholstery - 9.30am until 12 noon at the Blackbourne
- 5, 12, 19, 26 Keep Fit for the more Mature - 10.30-11.30am at the Blackbourne
- 14 History Group. 8pm in St John's Church Room, a talk by Gwyn Thomas from Bury Record Office on 'Suffolk War Memorials'. Members £1, Guests £2.50.
- 16 2pm, St John's Church
Autumn Fair - Blackbourne

November continued

- 20 Elmswell Cricket Club AGM, 8pm in Elmswell Library
- 21 Gardening Club AGM
- 30 Entertainment Quiz - teams of up to 6 (£2 per person). Organised by Elmswell Cricket Club, 7.30pm for 7.45pm start in The Blackbourne

December

- 3, 10 Keep Fit for the more Mature - 10.30-11.30am at the Blackbourne
- 7 10.30am - in St John's Church: Flower Arranging Demonstration by Anne Dyball
- 12 History Group. 8pm in St John's Church Room. 'A Georgian Christmas', an illustrated talk by Dr Pat Murrel. Members £1, Guests £2.50.
- 15 Toddlers Christmas Party

Tell us more - Tel 241841