

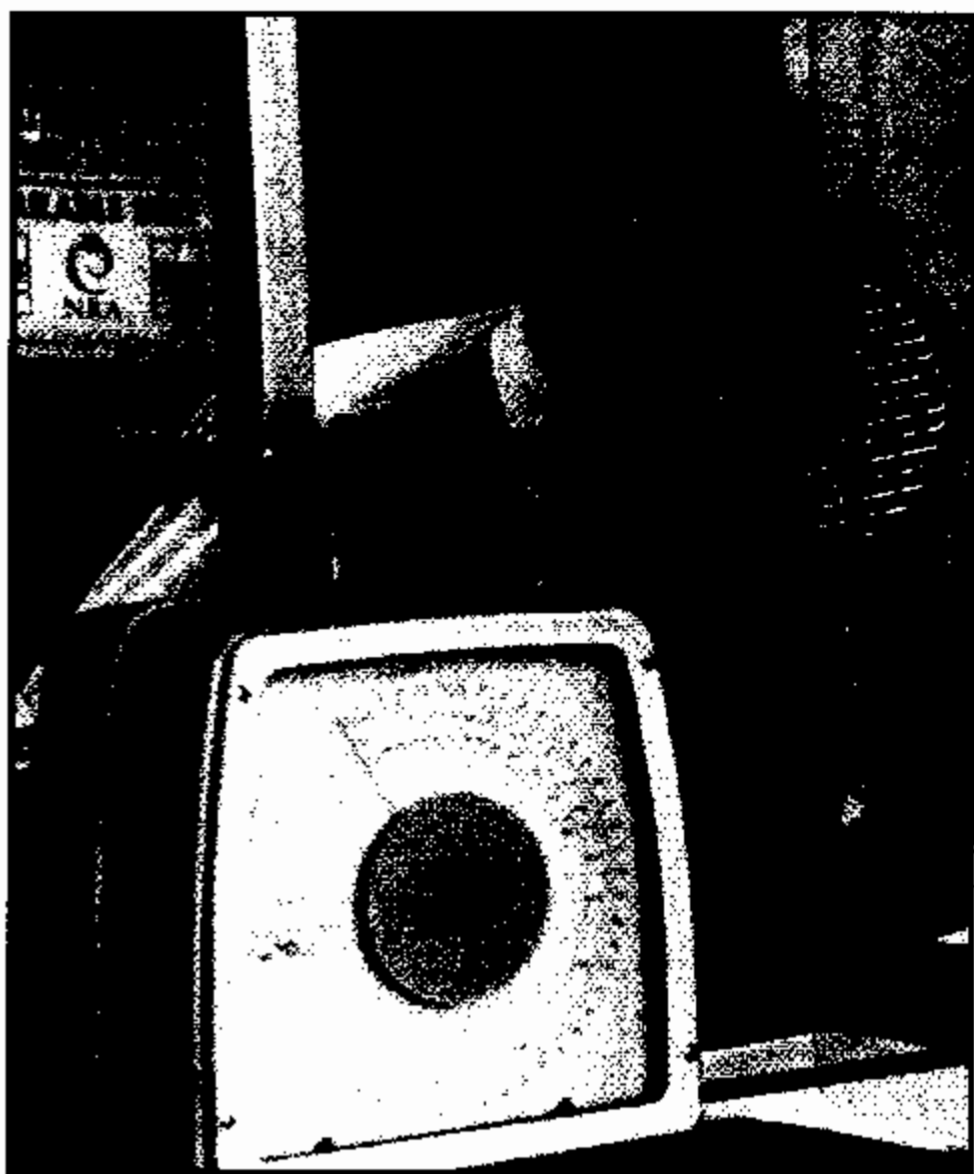
Seventeen years of Parish Record.....  
..... Community News and the Community's Views.



# The ELMSWELL Newsletter

JULY 2003

..... Your Parish Matters



*Our  
own  
Royal  
Male ?*

See page 27...

**Published by the Elmswell Amenities Association Reg. Charity No. 304879.  
Delivered free to every household and to businesses in the community.**

A volunteer enterprise entirely supported by advertising.

**PLEASE SUPPORT OUR ADVERTISERS.**

**This Month's**  
**"COMMENT"**  
is from Terry Southgate,  
Peter Edmonds  
& Graham Newman

**Well the Fayre is coming up  
on us all - fast!**

The three of us are trying to put the Fayre together. Yes only the **THREE OF US!** We still have many loose ends to put together, hopefully we will be able to sort everything out, as we have done over the last years.

There are only certain things we can do on our own. We do need your help with handing in your draw tickets which are found in your Newsletter. There is no way we would be able to sell the draw tickets door to door. We know most of the 1,400 books of tickets inserted in the Newsletter will finish up in the bin, but what else can we do? Well, at least you will be able to put them in the green recycling bin this year!

We will be lucky if we get 200 books back, yes, only 200 books at the most. We do have a look at the stubs and we would like to thank our regulars for their help. We just wish we did not have to upset some of you by putting them in the Newsletter. Of course you do not lose anything by putting them in the green recycling bin. It does not take a lot of effort to do that! The effort is made by the people who put them in the letter boxes.

If you would like to hand back the books for the first time, we have many collections points in the village. If the three of us had any spare time we would collect them from your doors, so please help us. If any of you can sell extra books, please make contact with one of us. If we could find a 100 people to sell 5 books it would be brilliant. Sadly, I think we will not even have 5 people answering this appeal, (if that). I made an appeal 3 years ago and did not have 1 call offering help. Fingers crossed for this time!

The 3 of us have decided to let the village organisations have stalls for **FREE** this year. We want to encourage Clubs and organisations to raise money for themselves. Only 2 people per stall will be allowed in free. We have spent lots of

**YOUR COMMENT INVITED...** If you have a comment, a view, a statement - something to say about anything of concern to Elmswell - share it with our readers via the 'Comment' column or our 'letters to the Editor' feature c/o Gobblins, Station Road Industrial Estate. Please include your name and address and a telephone contact number - our next deadline is 23rd July 2003.

money on entertainment for the Main Arena. We have already booked 2 national acts and we are looking for more entertainment, so watch this space.

## DRAW SPONSORED BY TRAVEL STOP, YOUR LOCAL TRAVEL AGENTS.

Some of the Collections Points for completed draw ticket stubs:

4 PAWS FOODS

POST OFFICE

FISH SHOP

32, ROWAN GREEN

TRAVEL STOP

MACE

GOBLINS

*Please help us...*

*Terry Southgate, Peter Edmonds & Graham Newman*



## TaxAssist Direct

The Tax and Accountancy Service for  
Small Businesses and Taxpayers

Self Assessment, Tax Returns, Annual Accounts, Book-Keeping,  
Employed, Self-Employed or Starting a New Business

For a free initial discussion without obligation call

**Clive Jenkins. Tel/Fax 01359 242284**

The deadline for the next issue is 5.00 p.m. on Wednesday 23rd July 2003. Copy to Goblin's office on Station Road Industrial Estate or contact our Editors: Jean Barker 241135 or Peter Dow 241841.

The Amenities Association, which publishes the Newsletter, will try to find space for all contributions, regardless of any point of view expressed, as long as space permits and providing that they are legal and that the writer's name and address are included.

Any views expressed or implied are not necessarily condoned or supported by the Association which offers, in the Newsletter, an impartial service to the community.

Advertising at the following rates. Please let us have an invoicing address with your copy:

### Village Residents

Repeat ads - run for 6 months or more - per issue:

¼ page £15 per month    ½ page £20 per month    Full page £30 per month

One off ads:

¼ page £19                      ½ page £24                      Full page £36

Charitable, non-party political community groups based in Elmswell

¼ page £8                      ½ page £11                      Full page £16                      Front Cover £22

### Out of Village Advertisers

Repeat ads - run for 6 months or more - per issue:

¼ page £17 per month    ½ page £22 per month    Full page £33 per month

One off ads:

¼ page £21                      ½ page £26                      Full page £39

**PAYMENT STRICTLY  
IN ADVANCE.**

**Cheques payable to:  
ELMSWELL  
AMENITIES  
ASSOCIATION.**

**OR**

**Photographs £10 extra.  
Classified Ads:  
30 words maximum £5  
cash with order.**

# Around and About ...

## CATHOLIC PARISH OF OUR LADY, STOWMARKET

### Parish Priest:

Father Denys Lloyd,  
The Presbytery,  
29 Lockington Road,  
Stowmarket IP14 1BQ  
Tel: 01449-612946

### MASS TIMES:

**Saturdays (First Mass of Sunday),**  
Woolpit C of E Parish Church, 6pm

### Sundays

Stowmarket (Our Lady's, Stricklands Road), 8.30am & 10.15pm

Wattisham Airfield Church, (first Sunday of each month), 12.15pm

Needham Market C of E Parish Church (second Sunday of each month), 12.15pm

### Holy Days

Stowmarket (Our Lady's, Stricklands Road), 8am, 10am and 7.30pm

Weekday Services in the parish are listed at the front of the church at Our Lady's and in the weekly Newsletter. If you are unable to contact Fr Denys and need a Priest in a hurry, please telephone 01284-754358.

The Parish Representative in your area :  
Mrs Hilda Jackson, Holly Cottage, Long Thurlow, Badwell Ash IP31 3JB. Tel: 01359-259944.

## ELMSWELL FOOTBALL CLUB

**Club Sponsors:** Mirror Group Newspapers

**First Aid Sponsors:** Euro Food Machinery (Elmswell)

**Match Day Sponsors:** Harris Cuffaro Nichols (Solicitors, Old Harlow, Essex)

**Summer School Sponsors:** Wells Stitched Embroidery (Elmswell)

**1st Team Sponsors:** Mirror Group Newspapers

**2nd Team Sponsors:** Elmswell Fox

**(A) Team Sponsors:** Wilsons Transport (Elmswell)

**Match Ball Sponsors:** Rota-Rod (Bob Barter), Travelstop (Elmswell), Stowmarket Golf Club, Tulipa Landscaping (Elmswell)

**1st Team Manager:** D Scase. Assistant B Barter.

**2nd Team Manager:** D Carter. Assistant T Warby.

**(A) Team Sponsors:** S Beasant. Assistant **Under 14 Sponsors:** Abbots Estate Agents (Manager P Case)

**Match Ball Sponsor:** W Jarvis (Landscaping Elmswell)



★ St John's Church - Elmswell

☆ Saturday 26 July at 7.30pm

♪ A CONCERT

'Bach to the Fuchsia!'  
by local musicians

★ Admission £3.50  
(includes refreshments)

Tickets now available  
(Tel: 242099)

☆ Part of the FUCHSIA FESTIVAL WEEKEND

★ Proceeds to Church General Funds

## Around and About conf'd., pg3

**Under 11 Sponsors:** D J Fishbar (Elmswell) (Manager T Ingram)

**Under 10 Sponsors:** Village Homes (Manager J Tuzinkiewicz)

**Over 35 Sponsors:** C G Finch & Sons.  
**Monthly Draw June, drawn by T Burch**

No 198	A Brett	£500
No 373	G Hurrell	£115
No 93	C Gould	£75
No 28	M Day	£35
No 261	M Royal	£15

Anyone wishing to join the Football Club please telephone Barry Hayward on (01359) 240951. Training nights Wednesday nights, Blackbourne at 18.15. Compiled by H Mulley (01359) 240889.

## ELMSWELL F.C. CLUB

Monthly Drawn for June drawn by T Burch

No 198	A Brett	£500
No 373	G Hurrell	£115
No 93	C Gould	£75
No 28	M Day	£35
No 261	M Royal	£15

## ELMSWELL BOWLS CLUB RESULTS

Stowmarket and District League

### Monday League Division 2

Bramford 84	Elmswell A 73
Elmswell A 50	Rookery A 93
Haughley 67	Elmswell A 70
Bildeston 77	Elmswell A 67

### Monday League Division 4

St Botolphs 75	Elmswell B 88
Elmswell B 75	Rookery B 60
Elmswell B 71	Stowupland B 60
Elmswell B 71	Thurston 71

### Tuesday Afternoon League Section A

Elmswell A 24	St Botolphs A 44
Thornham Magna 28	Elmswell A 34
Elmswell A 17	Debenham A 59

### Tuesday Afternoon League Section B

Stowupland B 22	Elmswell B 31
Elmswell B 48	St Botolphs B 18
Debenham B 66	Elmswell B 11

### Wednesday Section

St Botolphs 99	Elmswell A 39
Elmswell A 54	Haughley 78
Bildeston 78	Elmswell A 62

### Thursday Section

Elmswell B 91	Needham Market 65
Debenham 96	Elmswell B 41
Elmswell B 79	Earl Stonham 53

### Stowmarket & District Bowls League

#### Thurlow Charity Shield

Elmswell B 13	Bramford 35
---------------	-------------

#### Suffolk County Bowls Association

#### 1st Round Camel Charity Cup

Elmswell 90	Thornton 76
-------------	-------------



## Wetherden Under Fives



Pre school (age 3-5) and  
Rising 3's (age 2½-3)

### Open:

Mondays, Tuesdays,  
Thursdays and Fridays  
9.00am - 12.30pm

A secure, happy place where  
learning to socialise, share and  
develop is fun.

We accept nursery grants.

### Contact:

Sandra Gidney 07971 827522 or  
Caz Hewett 242733

## Around and About cont'd., pg5

### 2nd Round

Newton Road Conservative Club 91  
Elmswell 68

### Stowmarket & District Bowls League Thurlow Shield

Walsham le Willows 27     Elmswell A 51

### LITTLE ELMS FUN FACTORY

Following our  
second EGM and a  
recent meeting held



Holiday Play Scheme

on 11th June, it is  
with great regret that we have to inform  
everyone that Little Elms Fun Factory is  
**CLOSED**. It was unanimously decided  
that due to the lack of support and helpers  
to run this organisation, we are unable to  
continue for the summer months and into  
the future.

If you have any questions or concerns

regarding this matter, please contact  
Linda Mitchell at Suffolk Acre on (01473)  
242516.

We would like to take this opportunity to  
thank everyone who came, took part,  
volunteered their time and enjoyed this  
facility.



### **THANK YOU** **CARL FINCH MEMORIAL** **FUND**

To all those who supported the  
bonfire night in November, the  
fund raising day in April and the  
extra draw held in the Tavern on  
8th June.

Yet again we have been  
overwhelmed by your generosity -  
thanks to you all - from those who  
supplied prizes, made donations -  
to those who helped at all events in  
whatever capacity.

Total raised this year for the  
Friends of Woolpit Health Centre is  
£2263.00

The money will be used to  
purchase another 24 hour BP  
monitor as the one already  
purchased is constantly out being  
used and there is a waiting list.

Once again thank you.  
Roy Finch & Virginia Finch



### ELMSWELL W.I.

At the June meeting of Elmswell W.I. a  
large audience waited to see how many  
appetising dishes Jenny from Sainsbury's  
would produce in one hour.

She did not disappoint us, seven sweet  
and savoury dishes were cooked and  
assembled in record time, these were  
then eaten and enjoyed by everyone. We  
all wished we could be such skilful cooks.  
The evening outing to a stud in Thetford

# Celebrate!

The Elmswell  
Fellowship of Churches  
invites you to an  
**OPEN-AIR SERVICE  
OF CELEBRATION**

**Sunday 20th July, 3pm**  
**Crown Mill Green**  
(by the railway crossing)

*Please bring along your  
garden chairs or a rug*

ELMSWELL FELLOWSHIP OF CHURCHES



## **Around and About cont'd., pg7**

had been most interesting and enjoyed by all, some members winning excellent raffle prizes as well as relishing the refreshments provided.

Arrangements were finalised for the village walk and BBQ and also next month's mystery outing.

The monthly competition "4 Jam Tarts" encouraged many members to show their ability to make pastry.

Jean Mason was voted best pastry maker. Our next meeting is on Tues Aug 12th at Blackbourne Centre, visitors are always welcome.

Tel. 01359 241591

**Jeanne Crook**

### **ELMSWELL CRICKET CLUB (sponsored by Manvers Triumph)**

First, my apologies for the lack of a report in the last issue. My two loyal readers (OK, Mark, I know you've got three!) were disappointed. No doubt, the rest of the village was pleased. When the editors changed the deadline I was still working to the Chinese calendar. I'm still struggling to shift from horse year to sheep year. Well, it's either that or poor eyesight? So how are we doing? Four wins in five matches; then five straight defeats. Maybe we peaked too soon. A lot of us peaked years ago - which is why we have to be 'hidden' when fielding. I've mentioned before about the average age of our fielders. On some days, in some parts of the ground, it's been over 50. It's rumoured the "Time Team" is about to investigate some of the players. Where once stood a cricketering Adonis with the speed and agility of a Jonty Rhodes now stands a player who is to fielding what Bernard Manning is to speed-skating. Best we can do is to avoid humiliation. Priority for a hopeless fielder is not to be found out. Any idiot can show how good



he is but to conceal ineptitude is the real art. But how?

First, make sure you field not too far from the wicket. When Wink's placing his fielders, talk to the batsman and keep your back to the skipper - so you don't hear him shouting at you to field on the boundary. Never fails. Remember your dicky shoulder - rub it frequently having, before the game, asked if anyone had a Deep Heat spray as it's playing up a bit today - so you can only throw underarm. If that's fooled 'Two Fridges' Peachey, then what of opponents? Walk in before every ball. The best fielders do this as they're genuinely enthusiastic; the worst want everyone to *think* they're the best. Look keen. Show off a bit - especially when it doesn't matter (you know what I'm saying Mr Greathead). A well-timed dive is good, whether or not you had the slightest chance of reaching the ball - ask



*Are you in  
need of a  
reliable  
experienced  
babysitter?*

*Look no further*

**Contact Amy Jarvis  
01359 241958  
Mobile 077199 14298**

## Around and About cont'd., pg9

Deano - and it saves you having to run miles to retrieve it. Always back up. It's easy, and anyone who stops the ball while backing up is a hero (because some other idiot failed to do it ten minutes ago). If, accidentally, you happen to do something impressive, stay cool - everyone should think you're always as good as that. Ensure the ball comes to you on its way back to the bowler. Experiment with different ways of catching it: hands up like the Aussies, hands down like the English, or hands flapping from side to side like the sea-lions at Colchester Zoo. Keep your mouth shut as the ball loops through the air. Don't hyperventilate. And, of course, never cry! And don't put your hands in the air until just before you catch the ball - this looks good. Doesn't matter if you drop it because it's better to *look* as though you're going to catch it than to actually do so. Pick it up, polish it, study it and always hold on to it a second too long - it gives the impression you've been fielding the ball constantly, whether or not you have. Nigel Burch has perfected this. Avoid very close fielding unless you're OK about complex bone fractures. You don't have the reactions to evade it, let alone catch it...and you're terrified anyway. Slip is easier. No one in village cricket takes slip catches - so it might just as well be you. It does help if Wink puts you in the right place. Should I be at square leg or behind square? At mid-off Wink's also pondering - should he be at square leg or do I put someone there who can field?

The ultimate challenge is to stay awake - it's 30 minutes to tea, the sun's caressing your balding bits, songbirds are warbling, you haven't fielded a ball for yonks and the lunchtime lager has dulled what few senses you have left. Hannibal Lecter would have trouble concentrating in such conditions. All is peace and you're at one

with nature - the smell of the variegated greens of the massed foliage that is The Blackbourne hedge, the sounds of local teenagers copulating in the undergrowth...and someone in the distance shouting "Catch!". Oh, my God...

**Recent Results** (please note that these have not been 'sexed-up' by the BBC)

League: Elmswell 172 for 6 (Brown 62, Reed 31); Woolpit 43 (Greathead 3 for 9).

League: Tendring Park 102 (Reed 7 for 10); Elmswell 83 (Greathead 24).

League: Elmswell 103 for 7 (Reed 25, Jordan 25); Stowupland 2nd XI 106 for 9 (Whatling 3 for 31).

League: Elmswell 172 (Brown 30, Peachey 25); Withersfield 174 for 3 (Reed 2 for 29).

Cup: Acton 296 for 6; Elmswell 196 (Jordan 41, Van Den Berg 40).

## W. JARVIS TREE SERVICES

Wood chips for sale  
Used for gardens,  
Pathways, and play areas.

Approx 1¾ ton per load  
£75 + VAT  
½ load £40 + VAT  
Delivered

Ring: 01359 241958  
Mobile: 07850 046504



## Around and About cont'd., pg 1

League: Lakenheath 3rd XI 161 for 9 (Greathead 4 for 21); Elmswell 138 (Van Den Berg 36).

Finally, our grateful thanks to JD and RJ Baker Ltd for the loan of a tractor, thus enabling the outfield at The Blackbourne to be cut immediately prior to home matches.

**Doug Reed (Tel. 241009)**

### Elmswell CC Century Club - Results May Draw

£15 S Jordan (No 105)

£10 T Newman (40)

£5 H Mulley (72)

### June Draw

£15 H MacClagen (No 96)

£10 N Greathead (54)

£5 L Mowles (27)

### ELMSWELL BAPTIST CHURCH

How many of you spotted our walk around the village on June 8th. We had a meal after the service and then a few volunteers (one with his arm firmly held behind his back) decided to go for a walk around the village in the afternoon. A large dog led us and I kept up the rear (I was frightened that if I went in front with my shorts on, it might think that it was teatime). As soon as we got back to the chapel it rained (about an hour too late). Some enjoyed it so much that they want another one so if you're a hiker watch out later in the year.

On July 8th we have a bar-b-que at the Blackbourne for our early end of term CU party (there will be two more after this date). I know, I got the date wrong last month - if you turn up on the 15th you will join the WI who beat us to the booking. No hard feelings, I shall continue to buy your jam.

Our CU club finishes on the 22nd July at the Chapel and then have its summer recess before starting again at the beginning of September. Thanks to all children and families who have supported us over this year, we've had a great laugh and we look forward to new faces joining us in September.

On July 20th the 3 churches in the village will join together for an outside service at Crown Mill Green (by the railway crossing) at 3pm. It's also the open garden day so give us a look in between your tour of the village gardens. You will spot me, I shall be the rose between two thorns. Please feel free to bring along your garden chair or a rug, you may need to sit down when I strike up on the guitar!!!!

Our refurbishment of the kitchen is complete, and during this month work should be starting on our indoor loo and outside roof.

Our services continue each Sunday morning at 10.30am. It lasts just under an hour, and is an enjoyable way to start your Sunday. If you are new to the village

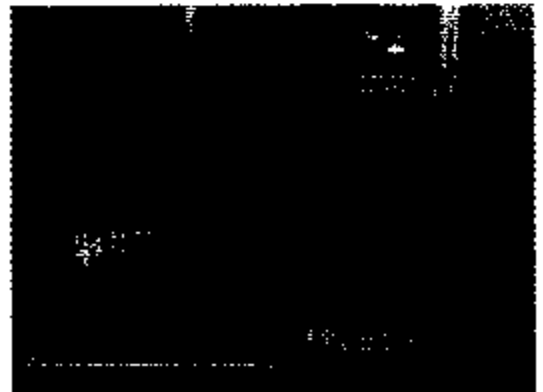
~~ **Novelty Cakes!** ~~

You create the idea - Let me create the cake!

Free Delivery within Elmswell

**Jean Barker ~ 01359 241135**

Cartoons ✓ Sports ✓ Animals ✓ Hobbies  
Anything...



## Around and About cont'd., pg 12

give us a look.

That's it for July, role on August when the footy season starts again, the church now has two season ticket holders in its membership, unfortunately one is for Colchester Utd (I think they found it in their Christmas cracker this year).

See you next month if not before (or in Tesco's - Debbie).

**Mark**

P.S. Glad to see the cricket club kept their column short last month!!!!!!

### CLASSIFIED ADS

**GARAGE SALE**, Saturday 26th July at 11am at The Limes, Church Road, Elmswell. Household items including Ercol dining room table & 4 chairs, garden furniture, carpet, curtains, glass, toys.

## A.L.W. Electrical Contractor

All Commercial & Residential Electrical work undertaken by experienced and qualified engineers.

Ring now for a competitive quotation:  
**01359 241677 or  
07887 614902**

### SERVICES etc., AT ST JOHN'S CHURCH

#### St John's Church

The Fuchsia Festival in the Church, staged by West Suffolk Fuchsia Fellowship will be held on 26 and 27 July. The Church will be open from 10am - 6pm on Saturday and 12 noon until 5pm on Sunday. Refreshments will be available and entrance is free. On Saturday evening 26 July at 7.30pm there will be a concert by some of our local musicians, 'Bach to the Fuchsia!' Tickets for the concert are now available from Jean Folkard (242099) - £3.50 (includes refreshments). Proceeds from the weekend will go to the general Church funds.

#### The Friends of St John's Church

The Annual General Meeting of the Friends was held on Saturday 14 June and was followed by a Coffee morning which raised £180 for Friends' funds. Thank you to everyone who supported this event.

#### Sunday 13 July

08.00am Holy Communion

10.30am Parish Praise

#### Sunday 20 July

10.30am Holy Communion

3.00pm Celebrate! Open Air Service  
Crown Mill

#### Saturday 26 July

10.00am-6.00pm Fuchsia Festival

7.30pm Concert

#### Sunday 27 July

10.30am Morning Prayer

11.30am Holy Communion

12noon-5.00pm Fuchsia Festival

#### Sunday 3 August

9.30am Family Service with Music  
Group

10.30am Morning Prayer

11.30am Holy Communion

#### Sunday 10 August

08.00am Holy Communion

10.30am Parish Praise

## **Around and About cont'd., pg 15**

*Sunday School in Church Room at 10.30am every Sunday except 1st in month and summer holidays.*

**A night's floodlighting costs £5. Please make cheques payable to "ST JOHN'S CHURCH, ELMSWELL".**

### **JUNE 2003 SPONSORSHIPS NOT PREVIOUSLY ACKNOWLEDGED**

- 15 in loving memory of Vera Norman
- 17 in loving memory of my dear friend Vi. Died 17 June 2002
- 20 in memory of Stanley Watts

### **JULY 2003 SPONSORSHIPS**

- 1 in memory of Ron Last on his Birthday
- 2 in memory of Betty Peachey
- 12 in memory of Shirley Beamer
- 15 in loving memory of Ivy Millicent Elliston

- 18 in loving memory of Rosina Pamment
- 19 in memory of Grace Rush
- 19 in loving memory of Vic Fuller. Love Heather
- 20 in memory of Wilfred Hammond's Birthday
- 21 in memory of Reginald Bloomfield
- 23 in loving memory of Thomas Clover
- 26 in ever loving memory of my wonderful husband, Des. Left me suddenly July 26th 1999. May
- 28 Nan Stagg. Sadly missed, but Happy Days.

**All bookings and payments please to:- Trevor Sadler, Abbots Warren, Church Road, Elmswell (Tel: 240908)**

### **METHODIST NEWS**

On Sunday 20th around 2.45pm you will hear the lovely sound of the Norton Salvation Army Band as it calls us to the 3pm CELEBRATION arranged by the Fellowship of Churches on the Green near the station gates - see advertisement elsewhere in this Magazine.

We look forward to this event, arranged with agreement of the Gardening Club, on our Village Open Gardens Day. We hope this will really be a great village day, when we can enjoy and give thanks for the beauty of the garden remembering the ever welcome cup of tea which will be available for all in the Methodist Wesley Hall.

Our Parade Service, Strawberry Fayre and Annual Church lunch all went very well. The total raised at the Fayre was £460 - quite an increase on previous years, and we do thank all who supported us. The front of our church has had a rather overdue face lift and we hope to extend this clean up in due course.

The ladies have ceased their weekly meeting now until the Autumn, but the monthly Exchange Hall Social Club

## *Eastern Frames*

### **Picture Framing Bespoke Framing Service**

Large Selection of Frames  
Friendly Service & Advice  
Free Estimates - Free Parking

**Broken Glass Replaced  
X-Stitch Stretched & Framed  
Prints & Cards For Sale**

**DMC Stranded Coton &  
Cross-stitch Kits  
Now in Stock**

Find Us At Red House Farm Station Road  
Between Haughley & Old Newton

**Ring (01449) 675897**

## **Around and About cont'd., pg 17**

continues with an outing on July 15th to the Rougham Tower Museum. The youth clubs continue to the end of term at 5.30pm each Thursday.

Preachers planned to conduct our Sunday morning services, at 10.45am are:

July 20th Revd. Stephen Yelland,  
Holy Communion

July 27th Mr Stephen Roe

Aug 3rd Mrs Maureen Newcombe

Aug 10th Mr Oliver Baker

Aug 17th Mr Cyril Mowles

### **ELMSWELL MILLENNIUM HISTORY GROUP**

The June meeting was treated to an excellent illustrated talk by one of our favourite speakers, Pip Wright, on the Dissolution of the Monasteries. Sixteenth-century Suffolk patently had its fair share of young men ready to take full advantage of the political opportunity presented by

the Dissolution, and prepared to cut a few corners into the bargain.

The History Group meets on the second Thursday of the month at 7.30 pm in the Church Room (inside St John's Church), unless otherwise announced (members £1, non-members £2.50). There is no meeting in August. Our 2003-2004 programme kicks off at - please note - 7 pm on September 11th with the annual general meeting. This will be immediately followed by a talk by Tony Redman on the development of Suffolk churches, as shown by St John's, Elmswell, and on October 9th Colin Cooke will discuss the bells of St John's. Ashley Cooper will recount three hundred years of countryside history on November 13th, and on December 11th Johnny Stone, of the Mid-Suffolk Countryside Management Service, will present a history of hedgerows.

History Group membership: individual £10, joint £15, senior citizen £5, under-18 £1.

Enquiries to Norman Kenyon on 01359 241569

[www.elmswell-history.org.uk](http://www.elmswell-history.org.uk)

## **STOWMARKET SKIP HIRE**

Suppliers of  
2, 4, 6 & 8 Yards Skips  
1 Tonne Waste Bags  
Hoggin, Topsoil & Hardcore

### **PROMPT & RELIABLE SERVICE**

Weaver House  
Finborough Road  
Onehouse, Nr Stowmarket

Tel: 01449) 613824  
Mobile: (07860) 692733

### **EADS**

After a "rest" EADS is back in action with rehearsals underway for our next production, "The Thwarting of Baron Bolligrew" a play by Robert Bolt, which is being directed by Helen Tilney. Follow the adventures of our Knight Oblong as he crusades against dragons and the evil Baron. Performances are 18, 19 and 20 September. Notices and posters will be up in plenty of time to warn you of tickets sales. Remember, buy your tickets early to avoid disappointment later!

We had our AGM late June and the new Committee has been elected for the coming year. We said goodbye to Pippa



## Around and About cont'd., pg 19

Larkman and Philip Pursglove who have contributed a lot to the society and will be sadly missed by us all. Replacing them on the committee are Helen Tilney and Helen Humphries - or easily referred to as Robin and Marion to avoid confusion.

As always we are keen to welcome new people to the society - whether you want to be on stage or off. We need people to help with costumes, backstage - are you a dab hand with a paint brush?, then why not help with painting the scenery. Come along any time on a Monday evening - or if you want to ring first then contact Sue on 01359 259062.

With warmest regards to all our supporters.

**Susan Dey**

### GARDENING CLUB

The Gardening Club meeting for June was held as usual at the Library, on the 19th and the theme by the Speaker, Mr Callan, was 'Clematis from cuttings to blooms'. His talk not only showed us how we as enthusiasts could set out our cuttings, but also how the trade prepares each plant for sale to the public. Clematis have been with us since the 16th Century and are as popular today as they were then. The next speaker on the 18th September is Mr Bob Jackson who moves us on through the year with a talk on 'Winter hanging baskets' - a must for some colour during the dark months. All are welcome - doors open at 7.30pm for 8pm.

Each month we have a competition and it would be nice to see more entries. In September the competition is '5 Tomatoes' and over the year these competitions cover most of your gardens.

We are looking forward to our outing to Wisley RHS gardens on Saturday 2nd August.

Happy Gardening.



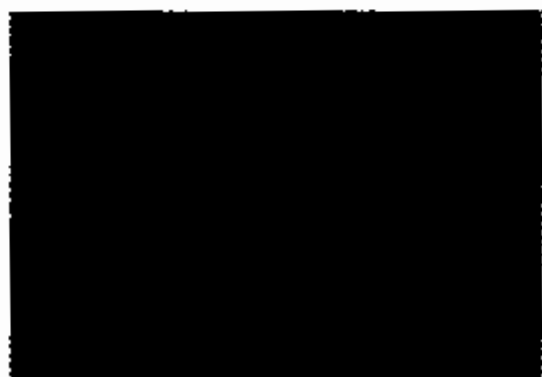
### ELMSWELL TODDLERS

This month the children have been busy with crafts such as pasta necklaces, Handmade Fathers Day Cards and - that old favourite - Playdough! As usual, Playworld was a hit with the children and we are all looking forward to our other up and coming events - Banham Zoo (14th July), Adult night out to Bingo (24th July), Family Barbecue including Grand Prize Raffle Draw (10th August) and Teddy Bears Picnic (20th August). Also, the bowling night was such a success we are planning to go again on 28th August - who said toddler groups were boring! This is the busiest social life I've had for years!

If you would like to purchase any raffle tickets to help support your local toddler group, please call me on the number



**FAST FORWARD**



**Jackie Hill**  
Bsc (Hons), Dip. SACH.Hyp

Help with psychological, emotional and habitual difficulties. Get rid of the stressful thinking that robs you of your efforts.

Act today and discover how you can get a free consultation.

Explanatory brochure on request.

**By appointment only:**  
**Telephone: 01359 240094**

## **Around and About cont'd., pg21**

below for details - prizes include makeovers, vouchers, attraction tickets, toys and much more.

We have now made story time a regular part of the session and children and carers alike seem to like this chance to wind down at the end of what has normally been a high energy level 90 minutes!

Finally, but very importantly, is the date of our next nearly new sale - Saturday 27th September. Look out for more details on how to sell, buy or help at the sale in the coming weeks.

If you have a baby or young child and would welcome the chance of somewhere in the village to go for an hour or so twice a week, come and join us at our regular sessions and see what you think. We meet in the Wesley Hall on Mondays at 1.30 - 3.00pm and Wednesday 10.00 - 11.30am and have lots of toys, crafts, singing and

refreshments - all for £1 and your first visit is free. The group is very friendly and new mums in particular find it invaluable to have somewhere to go and chat to other mums whilst the children play safely. For any further information - or to meet someone from the group before you venture in - do contact me on (01359) 242824.

**Caroline Long**

Chairman

## **BROADBAND GROUP FOR ELMSWELL & WOOLPIT**

The first milestone on our road to broadband was passed on 27th June, when pre-registrations reached 200!

BT has consequently confirmed that the Elmswell telephone exchange is currently being reviewed for the possible setting of a trigger level, i.e. the exact number of pre-registrations to be reached in order to secure broadband.

This does not mean it's certain that the Elmswell exchange will be included in the next batch of trigger levels due to be announced within the next few weeks.

However, indications suggest that our chances must be good. If you have pre-registered for broadband and would like to be informed as soon as we learn any further news, just send an e-mail to [broadband@elmswell.net](mailto:broadband@elmswell.net)

The campaign is now a joint one involving both Elmswell and Woolpit and has the support of both Parish Councils, and Jim Laflin, who has been a very active campaigner in Woolpit, has now added his youthful energy to our efforts.

As you may have read in his letter in The Mercury on 23rd June, our MP David Ruffley is strongly backing broadband campaigns in this area and he stresses the importance that everyone should pre-register. This is very easy to do on the website [ELMSWELL.NET](http://www.elmswell.net) (<http://www.elmswell.net/>) and please remind

# **NRH**

## **GROUNDWORKS**

### **YOUR LOCAL PAVING SPECIALISTS**

**Driveways \* Patios  
Block Paving \* Slabbing  
Garden Walls \* Fencing**

**Telephone**

**01359 251833**

**Mobile**

**07771 728481**

## Around and About cont'd., p23

your friends and neighbours: **THERE IS NO COMMITMENT BY PRE-REGISTERING!**

Our local campaign will be helped in July by distribution of a flyer to homes by BT and the availability of other forms of promotional material. We also plan to provide forms at various points in the villages for those wishing to ask the broadband campaign to pre-register on their behalf.

With the remainder of our route to broadband hopefully coming into view before the next newsletter is published, it's important to continue building up the number of pre-registrations.

### HELPING HAND CLUB

Our meeting on June 19th was a real foot tapping evening. Great music was



supplied by Les Allan and Peter.

Great songs and melodies were enjoyed and there were actions to YMCA to be seen coming from some of our younger members.

At the time of writing these notes our Strawberry Supper is almost upon us. Our meeting on July 17th, our speaker is giving us a talk on walking sticks and that will be followed on Sat July 19th by an outing to Clacton. Hopefully the weather will be kind.

Until next month, best wishes

**Stan**

### LITTLE ELMS PRESCHOOL

At Little Elms Pre-School, children take part in free play within a structured framework. They can choose from a wide range of activities and toys under the supervision of trained and caring adults. Each half term there is a different theme on which we base our activities, information can be found on the

curriculum notice board with a detailed description of the learning goals. The current theme is travel, with the emphasis on countries of the world and different modes of transport.

The pre-school relies on additional fundraising by parents, staff and committee members. We will be taking part in the school summer fair (18th July), the Elmswell Autumn Fair (7th September) and running a family disco in October.

We are looking into the possibility of opening for an additional two weeks during the summer holidays. This would be offered to any children aged 2½ to 4, on a "pay per session" basis. If you are interested or would like further information on the pre-school, please contact the Play Supervisor on 07762 234336.

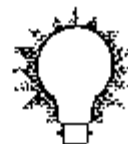
**Gary Morgan** (Vice Chairman)



## PW PRICE

### Domestic Appliance Services

for repairs to:-



- Washing Machines •
- Tumble Dryers •
- Dishwashers •
- Cookers • Fridges •

**New & Refurbished  
Machines Available**

*25 years experience*



01359 251268  
0771 0011164 (Mobile)

## *Our Cover Picture Shows . . .*

### **KING AND QUEEN**

Yes... Our own Stanley King, seen on our cover as most of us know him - busy behind the counter at the Post Office - is going to see the Queen.

Stanley is invited, on Tuesday 15th July, to a Garden party at Buckingham Palace. The invitation came via the Lord Lieutenant of Suffolk and suggests tea at 3.00 pm in anticipation of Her Majesty arriving at 4.00 to spend a couple of hours with her guests. Two military bands will be in attendance - music very much to Stan's taste.

Surely a difficult moment might arise should the Monarch ask of Stan, in time-honoured fashion, '...and what do you do?' For there is little that Stan doesn't do. From the crack of dawn and often before, he is sorting and delivering papers and mail. During the day he is, as on our cover, administering postal services and wise counsel from the Post Office counter. And in his 'spare time' ... the Cricket Club, the Helping Hand, the Newsletter ... there are not many areas of community activity which have not benefitted from Stanley King's indomitable and selfless efforts over a lifetime of involvement in the community. A brief 20 minutes should acquaint Her majesty with what Stan 'does'! Of course, he could regale her with one of his innumerable anecdotes, for Stanley does Stand-Up and sitting down. He can entertain a company for hours with humorous tales and delightfully apocryphal stories - although the tone and content of certain of the more mature examples could land the poor lad in the Tower.

We hope not. We hope that Stan has a thoroughly enjoyable day and look forward to the stories which will, inevitably, ensue. There could be no better emissary representing the Village of Elmswell than Stanley King.

## **Able Bishop & Company**

### **Solicitors and Commissioners for Oaths**

Your friendly local firm with local knowledge. Always available with a helping hand.

#### **We can help you.**

Moving home?  
Had an accident?  
Problems at work?  
Unpaid invoices?  
Buying a business?  
Dispute with neighbours?

#### **Then call Mike Jones**

Conveyancing; Planning;  
Debt Collection;  
Employment Disputes:  
Commercial Leases: Accidents.

#### **For an appointment call:**

Tel: 01359 245141  
Fax: 01359 245085  
Email: [info@ablebishop.biz](mailto:info@ablebishop.biz)

#### **Visit our website at**

[www.ablebishop.biz](http://www.ablebishop.biz)

**Selwyn Chambers, Second Floor  
Sampson House, The Street,  
Woolpit, IP30 9QN**

#### **Office Hours:**

Seven days per week  
(Monday to Sunday 8am - 8pm)



## *Letter to Ed from Haughley Hoofers*

### **...free taster session...**

Haughley Hoofers ladies clog dancers invite you to come along to their *free* taster session on Saturday 13 September 2003 between 10.30 am and 12.00 which is being held at Haughley Village Hall, Haughley (just off the A14). If you are looking to make new friends, and have a new interest which helps to keep you fit too you may find this group meets those needs. If you would like more details or are worried about coming along alone, give our friendly squire Gill Brett a ring on 01449 673518.

## *From Lesley Reed of Church Road*

### **The Blackbourne**

When I agreed to take care of the bookings diary for The Blackbourne a year ago, I persuaded the BMA committee to adopt a strategy which, I believed, would ensure that the building would be used to full capacity. I also felt that this approach would generate enough income to cover day-to-day running costs, with the potential for generating a profit.

When I first saw The Blackbourne, I realised that it is a wonderful venue for all types of community events and activities. Additionally, because it is a quality venue, I knew that during periods when it was not needed for the community, it could attract hirers who were prepared to pay a premium price for particular events, e.g. seminars, training events, special celebrations.

By charging this premium price, particularly to outside bodies and organisations, we could continue to reduce the charges to Elmswell organisations and hirers. At the same time, we would generate enough income to cover day-to-day running costs, thus reducing the need for the Community of Elmswell, through the Parish Council, to over-subsidise The Blackbourne.

Because of particular problems over the last year, it has only been possible to use this approach in a limited way, even so, the accounts presented at the AGM on the 24 June showed that it has proved successful and that it is the way forward in the future.

The numbers and types of events taking place at the Blackbourne have increased greatly over the last year. Both community events and use by outside bodies. And we did raise enough income to cover running costs.

At present, organisations such as Suffolk County Council are increasingly moving training and meetings out to the villages in recognition of the growth in quality venues. They do this in order to give some revenue to local halls and community centres as part of a policy for supporting the rural economy.

The Blackbourne has become a key venue for training and large management meetings. I am told that it compares very favourably with centres such as the Riverside Community Centre in Stratford St Andrew - perhaps one of the best available...and of course we undercut them slightly on price.

I am anxious that the BMA committee and Parish Council continues to maximise the potential afforded by business hirers, particularly as Local Authorities which have used The Blackbourne are very enthusiastic about the venue. Although I have now stood down from the BMA, I am happy to continue to advise or assist the committee

in finding these lucrative events, should they wish me to do so. It would be sad if the people with the vision to commission The Blackbourne now lack the imagination to maximise use. It could also prove expensive for Elmswell.

*from GSL Dave Hollings of Gardeners Walk*

**...special thanks...**

Recently we held our second Massive Jumble Sale at the Wesley Hall and raised £240 for our funds.

Special thanks go to our Parents Support Committee, The Methodist Church for the use of the Wesley Hall, The Baptist Church for the loan of tables, Barry Brough of Miko Coffee for the loan of the Coffee Machine, to Shirley our Scout Leader's mother in law for her sterling efforts making the teas and coffees, to Dave at the chippy, to Maggie Abercrombie, to Annie Coole, to Ann my wife for turning out on a day when she really wasn't well enough, to Eric and his ladies for sorting out the better quality items thus enabling us to increase our profit, and to all our parents for their support. A really big thank you must go to Jim Coole, our Scout Leader, who once again led from the front and pushed the whole project through, and carried on the effort to Sunday where the saleable leftovers were taken to the Woolpit Boot Sale to raise yet more for our funds.

Many thanks again and apologies if I've forgotten anybody.

---

# JOHN STURGEON

## PLUMBING & HEATING ENGINEER

---

All types of boilers installed and serviced.

Water softeners, showers, baths installed.

**Tel: (01449) 737507**

**Mobile: 07860 774027**

**DRINKSTONE BASED**

**CALOR APPROVED  
ESTABLISHED 1984**

**CORGI REGISTERED INSTALLER  
FREE QUOTATION**

As I'm sure you know, Carol Milward and myself were elected as District Councillors, in May, for Elmswell, Norton and Tostock. We will endeavour to do our best for the village at MSDC. In turn, we'll try to keep you in touch with any matters affecting Elmswell and, to that end, the Editors of this newsletter have been kind enough to provide us with a regular section in this publication.

So what's the story so far? Basically, most of the last few weeks has been taken up with getting familiar with the District Council and, not least, the jockeying for positions that has gone on given a change in the political make-up of the administration. Carol Milward has secured a place on the Council's Executive Committee which puts her at the heart of decision-making. This *has* to be good from Elmswell's point of view. She is also, though this may yet change, involved with the Northern Area Planning Control Committee - which includes Elmswell. As a newcomer, I've been tasked with the Economy Policy Panel and the Scrutiny Sub-Committee. When I've sussed out what they're about then you'll be the first to know!

In practical terms, the 'TwinBin Recycling' scheme continues to prove successful overall. If you have any specific problems or queries then please *do* contact the Support Team - telephone 01449 778678 or e-mail [recycling@midsuffolk.gov.uk](mailto:recycling@midsuffolk.gov.uk)



There have been concerns expressed about litter on the A14 (from Beyton to Sproughton). MSDC feels there is a need to educate the public in a bid to reduce the amount of litter thrown from vehicles as, apparently, the Highways Agency is not sympathetic to bins or signs in parking bays - and it isn't possible to erect them without the Agency's permission.

**Affordable housing** - this is a priority for MSDC and, I'd suggest, for Elmswell. MSDC has prepared draft Supplementary Planning Guidance to give direction to housing providers on how the Council's planning policies for encouraging affordable housing should be implemented. Parish councils have been invited to comment by 31 July.

**Ashfield Road** - the carriageway is to be resurfaced in October/November.

Finally, even though it's some way off, there *are* Elmswell residents who fall foul of the 'Woolpit Whiff'. I've had the pleasure of attending no less than three meetings already about this matter which continues to be the source of very protracted legal wranglings. A conclusion, however, seems as far off as ever.

Anyway, that's it for now. If you have any queries, comments, complaints, plaudits etc about MSDC then please contact Carol:

Carol Milward, 38 Pretzman Avenue, Bacton IP14 4NY (Tel: 01449 781810; e-mail: [carol.milward@midsuffolk.gov.uk](mailto:carol.milward@midsuffolk.gov.uk));

or myself

Doug Reed, Second Thoughts, Church Road, Elmswell IP30 9DY (Tel: 241009; e-mail: [doug.reed@midsuffolk.gov.uk](mailto:doug.reed@midsuffolk.gov.uk))

---

## PARISH COUNCIL MEETING

---

At the Ordinary June Meeting, held at Blackbourne on Monday 16th and attended by 10 members of the public, the following matters of interest were among those discussed.

**Public comment.** The Chairman, Cllr David Barker, pointed out that questions and comment from the public are now to be invited at the beginning of each of the 4 main sections of the meeting. These are based on the matters dealt with by the Planning Committee and the newly formed Advisory Committees which will cover, respectively, Finance & General Purposes (F&GP), Environment and Community Action. A further opportunity for the public to speak on general matters will be given towards the end of listed business.

**Finances.** The Clerk reported that, as widely anticipated, the administration of the Council is found to be in a mess and that there is little to be expected for some

time by way of a clear fiscal picture. The emergency measures taken by SALC under the last Administration to produce reliable financial figures are, it has transpired, only now allowing progress towards closing the books for the financial year 2001/2002. An Opening Balance to allow work on accounts up to March 2003 is not yet to hand, therefore current figures, from April 2003 to date will be based merely on income and expenditure until records have been checked, validated and inputted. Until then he advised that only essential expenditure could be considered. The Chairman confirmed the seriousness of the situation which had been inherited and warned that, if the worst case scenario were to be realised, an Interim Precept might have to be set.

**Framework.** The meeting accepted various recommendations made in a report from the Chairman of the F&GP Advisory Committee, Cllr Mike Schofield. This lays down the Advisory Committee structure, requires much fuller, more informative and more open Agendas, sets out guidelines for greater public participation in meetings and endorsed various initiatives to make the Parish Clerk more accessible both to councillors and to the public.

**Grants.** Given the uncertainty regarding the Council's financial position and the likely shortfall in available funds, it was decided that no grant aid could be given in the current financial year. Attempts are to be made to trace applications which have already been received and a notice is to be posted in the Newsletter explaining the situation.

**Footbridge.** The Chairman outlined the

**Part time**

**CARETAKER**

**needed at  
The Blackbourne  
community centre;**

**Varied duties,  
flexible hours.**

**Telephone 241841**

forward thinking which had, some years ago, enabled the greenspace at Crown Mill to be reserved as the site for a future footbridge over the railway line. It was agreed that the need for such a facility was increasing as the roads and the railway became busier. This had, it was reported, been pointed out in a recent 'Safely to School' exercise. There was no support for the last gasp initiative of the previous administration in trying to destroy the idea of a bridge by seeking to build a house on the site and but one voice suggesting the possibility of keeping all options open by pursuing the Planning Application for the house. Feelings, it was argued, are now more strongly in favour of this imaginative long term initiative and support should be indicated by sending the clear message to the village and to the Planners that the Council is not interested in the possible short term financial gain to be had from selling the site as yet another building plot. The Planning Application to the District Council had been on hold following public pressure and in the light of investigations, and subsequent guilty findings, by the Standards Board for England against two previous Parish Councillors who had not behaved properly in the matter. A proposal to withdraw the application succeeded by 8 votes to 1.

**Ashfield Road speed limit.** A letter of support is to go to Suffolk County Council which seeks to impose a 40 mph speed limit between Elmswell and Great Ashfield.

**Blackbourne nuisance.** The possibility of a barrier across the entrance to the car

park at Blackbourne is to be investigated in an attempt to curb unreasonable and unsafe behaviour on the part of young motorcyclists and motorists who pose a constant and dangerous nuisance by riding in and out of the site repeatedly and to no apparent purpose. Such actions, it was said, blight the lives of many nearby residents and put at risk the safety of young children.

**Broadband.** Council agreed to register with BT its interest in broadband enablement which would greatly enhance the local website infrastructure to the benefit of business, local employment and study & leisure users of the internet.

**Litter/doggle bins.** The Environment Advisory Committee is to look at the problems evident in the provision throughout the village, including the intermittent emptying of the bins over the period of change-over to the Twin-Bin system. Again, it was agreed, finances will probably not allow any initiatives involving other than minimal expenditure.

**Blackbourne Management Association.** A meeting is to be arranged to rationalise the relationship between the Council and the BMA which manages the Blackbourne on the Council's behalf for the community. It was agreed that much of the existing bureaucracy could be dispensed with and, consequently, money saved.

**Next meeting.** The date of the next meeting was agreed as Monday 21st July at 7.30 at the Blackbourne. The public are welcome and will be invited to speak.

**Peter Dow - Parish Clerk**

**The Parish Clerk's Office is on the industrial estate behind the Fox, right next to the railway line. It is open 9.00 - 5.00 weekdays and otherwise by arrangement.**

**Tel/Fax 244134**

**clerk@elmswellpc.freeserve.co.uk**

# What's On in Elmswell ?

To be included in our events diary make sure you send separate notification of your announcement.

## July

- 12 History Group, Long Shop Steam Museum, Leiston, 10.30am, visit to the museum
- 12 Family Disco, Blackbourne, ring 244692
- 20 "Celebrate". A mix of music, song and interviews organised by the Elmswell Churches, 3.00 pm at Crown Mill Green - All Welcome
- 26 Concert in St John's Church, 7.30pm
- 26-27 Fuchsia Festival, St John's Church

## August

- 3 Elmswell CC v Tendring Park. League. 2.15pm at The Blackbourne
- 17 Elmswell CC v Withersfield. League. 2.15pm at The Blackbourne.

## September

- 7 Autumn Fayre
- 11 History Group, St John's Church, 7.00pm, AGM followed by Tony Redman, The development of Suffolk churches, as shown by St John's, Elmswell
- 12-14 Friends' Festival of Art, Music, Flowers, St John's Church
- 14 Friends' Annual Service, 10.30am, St John's Church

## October

- 9 History Group, St John's Church, 7.30pm, Colin Cooke, The Bells of St John's
- 16 Village Quiz

## November

- 13 History Group, St John's Church, 7.30pm, Ashley Cooper, Three hundred years of countryside history

## December

- 11 History Group, St John's Church, 7.30pm, Johnny Stone, A history of hedgerows

## January 2004

- 8 History Group, St John's Church, 7.30pm, Gill Hawkins, The Murder in the Red Barn

## February 2004

- 12 History Group, St John's Church, 7.30pm Peter Driver, Suffolk follies and oddities

## March 2004

- 11 History Group, St John's Church, 7.30pm, David Alderton, The industrial heritage of East Anglia

## April 2004

- 8 History Group, The Blackbourne, 8pm, Dr Catherine Johns FSA, Late Roman treasure from Suffolk

## May 2004

- 13 History Group, St John's Church, 7.30pm, Monica Place, Mary Tudor, French Queen, Duchess of Suffolk.

*Tell us more -  
Tel 241841*