

Eighteen years of Parish Record....
.... Community News and the Community's Views.



The ELMSWELL Newsletter

NOVEMBER 2003

.... Your Parish Matters

Our cover picture shows ...

ELMSWELL PAST – but is it our Elmswell? *See page 33*



**Published by the Elmswell Amenities Association Reg. Charity No. 304879.
Delivered free to every household and to businesses in the community on
the first Friday of every month.**

A volunteer enterprise entirely supported by advertising.

PLEASE SUPPORT OUR ADVERTISERS.

**This Month's
"COMMENT"**

COMMENT

'Things,' as the good old boy said when he dropped his glass eye, 'are looking up.'

For those who care about wildlife, either encouraging or enjoying it, things of late do seem to have taken a turn for the better. The Elmswell Community Wood

group have set themselves the task of securing land on which to plant a woodland. The Primary School have established a tree nursery to help stock it. The Kiln Meadow Wildlife Area has been saved from extinction and Anglian Water are about to remove the overgrowth ready for the Volunteers to take over again. The village's hedges are being surveyed and mapped by 8 teams of volunteers. And we have a Footpath Officer – after a lapse of some 4 years there is the chance to once again be guided around the footpath network to encourage regular use.

And Dick Burch, for it is he, lead some 25 walkers on the inaugural trip a fortnight ago from the Village sign up Footpath 10, over the railway into Wetherden, Grove Lane, the Airfield and back to the Fox. A fresh faced young chap declared the distance to have been 4.65 miles, as measured by his electronic thingy. The Company at large promptly declared that he should buy the first round at the pub, his being clever and therefore not short of a bob or two. It was an excellent outing – to be reported in full, with maps, in our November edition.

But a couple of weeks can be a long time where wildlife's concerned. Tooth and claw can take a swift toll. As witness the Parish Clerk's office over last weekend. When the 'phone began to ring. Vandalism on a grand and organised scale was alleged. The railway embankment, the backdrop for some of the most interesting stretches of Dick's footpath walk was denuded. A rich and varied tangle of scrub and bush, of berries and brambles, of oak and ash – of habitat and of protection was gone. Swept away in a few hours of mechanical slaughter. Nothing left standing to provide food or shelter; nothing left lying to rot and nourish and

YOUR COMMENT INVITED... If you have a comment, a view, a statement - something to say about anything of concern to Elmswell - share it with our readers via the 'Comment' column or our 'letters to the Editor' feature c/o Gobblins, Station Road Industrial Estate. Please include your name and address and a telephone contact number - our next deadline is 26th November 2003.

protect. Everything chipped into a garden-centre mulch; tidied, neatened, controlled, sanitised and killed stone dead.

The Press was alerted. Radio, newspapers – all agreed. Terrible business...lets talk to Network Rail who, at the time of writing at least, are responsible.

Leaves on the line. National initiative. Hit squads. Service Standards. Customer care. No reasoning possible...why all the trees and bushes when only certain broad-leaf species cause the problem...why not stick to the 5 metre strip which was agreed to be necessary, why the whole bank, up to 15 metres deep, for miles...why not leave some natural debris as habitat?

All too late. Go and see. Access the footpath parallel with the railway parallel with Wetherden Road through the set-aside footpaths on Wetherden Road or from Lord's Bridge via Eastern Way or from Blackbourne. See how the line is exposed without its natural fence, how the snow will drift across it and how the kids will find their dangerous playground so much more accessible. And see how bare and unnatural lies a previously teeming world. A motorway for wildlife to travel avoiding the arid fields and ever growing deserts of development. Then pop back home and ring the Network Rail Help Line on 08457 114141. Perhaps they'll think again before next season.

And do come on the next footpath walk – meet at the Sign on Sunday morning, 11.00am, 16th November. Before it's too late.

The deadline for the next issue is 5.00 p.m. on Wednesday 26th November 2003. Copy to Gobblin's office on Station Road Industrial Estate or contact our Editors: Jean Barker 241135 or Peter Dow 241841. The Amenities Association, which publishes the Newsletter, will try to find space for all contributions, regardless of any point of view expressed, as long as space permits and providing that they are legal and that the writer's name and address are included.

Any views expressed or implied are not necessarily condoned or supported by the Association which offers, in the Newsletter, an impartial service to the community.

Advertising at the following rates. Please let us have an invoicing address with your copy:

Village Residents

Repeat ads - run for 6 months or more - per issue:

¼ page £15 per month ½ page £20 per month Full page £30 per month

One off ads:

¼ page £19 ½ page £24 Full page £36

Charitable, non-party political community groups based in Elmswell

¼ page £8 ½ page £11 Full page £16 Front Cover £22

Out of Village Advertisers

Repeat ads - run for 6 months or more - per issue:

¼ page £17 per month ½ page £22 per month Full page £33 per month

One off ads:

¼ page £21 ½ page £26 Full page £39

**PAYMENT STRICTLY
IN ADVANCE.
Cheques payable to:
ELMSWELL
AMENITIES
ASSOCIATION.**

**ILR
Photographs £10 extra.
Classified Ads:
30 words maximum £5
cash with order.**

Around and About ...

WETHERDEN PRE SCHOOL

Autumn News

Did you know, a spider has 8 eyes, a worm 10 hearts and a grasshopper's ears are on its knees? We learned this and much more last term when creepy crawlies was our topic. We even had a visit from 2 land snails (very slippery characters!) and some stick insects. The children put together some of their artwork and made a fabulous display entitled "creepy crawlies and itchy things" which was entered into the Wetherden Summer Fete's art competition. Our very own Nathan Clements and James Galt (both from Elmswell) came 1st and 2nd respectively and Nathan was awarded the Goslin Cup for the best overall child's art work entry. Well done you two!

This term we've already built a rocket and travelled into space and made hot air balloons to go on a journey with Miss Jolly

and her broolly, as part of our 'Transport and Journeys' topic.

The pre school now boasts a lovely planetarium listening room, made by the children - a bit dark, but very popular!

Over the next half term, we will be exploring trains, which will include a train trip to Bury St Edmunds and a visit to Activity World (t.b.c.). Other forms of transport to discover will be planes, cars and not forgetting Santa's Sleigh which will take us to Banham Zoo to help santa feed his reindeer.

We piloted on "Art & Craft and Story Time" class on Thursday afternoons. The staff worked hard and free of charge but were sad to hear that posters advertising the class in Elmswell were being burned or taken down. Due to lack of support this will not continue after this half term break. As with all small village pre schools, fundraising is a vital part of our survival. The committee would like to thank everyone who has supported the pre school over this past year with donations, time and buying tickets for various events. A special thanks goes to Chrissy and Tony Chapman for their on-going support and donation of the bouncy castle for our recent Open Days. If you missed the Open Days and would like to visit Wetherden Pre School, we are open Mondays, Tuesdays, Thursdays and Fridays 9am - 12 pm and welcome children aged 2½ years - 5 years. Vacancies are available, a warm welcome awaits you from Sandra and her staff.

Do just pop in or call 07971 827522.

And finally, for a change, our next fundraising event is a **Christmas Disco for 9-13 year olds. It will be at The Blackbourne, Friday 19th December, 7.30pm - 10pm. £3 per ticket** with snacks and soft drinks available.

There will be adequate adult supervision including off-duty police officers. Children **MUST be collected by 10pm by an adult

St John's Church - Elmswell

Autumn Fair

at The Blackbourne
on Saturday 15 November
at 2pm

*Cakes, Books, Bric a Brac,
Games, Competitions,
Raffles, Tombola,
Greetings Cards, Gifts,
Hand made Jewellery, etc.,
Children's Corner,
REFRESHMENTS*

ADMISSION FREE

Proceeds to Church Funds
For Information Telephone: 242099

Around and About cont'd., pg3

and no child will be allowed to walk home alone. **

Tickets will be available mid November from Elmswell Mace and Post Office or 07971 827522.

Keep older children off street corners! Buy your middle school aged children a ticket and help raise funds for Wetherden Under 5's Pre-School.

Sandra Gidney, Pre School Leader

E.A.D.S.

The Panto is ahead of us (definitely not "behind you") so please make a note in your diary for January 28, 29, 30 and 31. We look forward to entertaining you, your family and friends again at the Wesley Hall in Elmswell. Tickets will go on sale mid December - at the Post Office and The Mace. We are doing *Sleeping Beauty* a tale of true love and romance where good triumphs over evil and where you'll



have to come and find out the catch!

This year will see our biggest junior cast that the society has had in a production - it promises to be full of the usual fun, talent and surprises.

As always we are in need of help - particularly with material and articles for our costumes and props. At the moment we are collecting anything that glitters or shines - is furry or smooth. Do you have any sparkly clothes you no longer want? An odd pair of curtains you no longer hang? Any unused pieces of material gathering dust in the loft? If so we would be keen to recycle these items for you - please telephone Sue on 01359 259062, or if there is no answer please telephone Sarah on 01359 242342.

Wishing you all the best for the coming festive season and see you in January.

Susan Dey, Chair of E.A.D.S.

CATHOLIC PARISH OF OUR LADY, STOWMARKET

Parish Priest: Father Denys Lloyd,
The Presbytery,
29 Lockington Road,
Stowmarket IP14 1BQ
Tel: 01449-612946

MASSTIMES:

Saturdays (First Mass of Sunday),
Woolpit C of E Parish Church, 6pm

Sundays

Stowmarket (Our Lady's, Stricklands Road), 8.30am & 10.15pm

Wattisham Airfield Church, (first Sunday of each month), 12.15pm

Needham Market C of E Parish Church (second Sunday of each month), 12.15pm

Holy Days

Stowmarket (Our Lady's, Stricklands Road), 8am, 10am and 7.30pm

Weekday Services in the parish are listed at the front of the church at Our Lady's and in the weekly Newsletter. If you are unable to contact Fr Denys and need a Priest in a hurry, please telephone 01284-754358.

Wetherden Under Fives



Pre school (age 3-5) and
Rising 3's (age 2½-3)

Open:

Mondays, Tuesdays,
Thursdays and Fridays
9.00am - 12.00noon

A secure, happy place where
learning to socialise, share and
develop is fun.

We accept nursery grants.

Contact:

Sandra Gidney 07971 827522 or
Jo Jacob 0771 535 9405

Around and About cont'd., pg5

The Parish Representative in your area : Mrs Hilda Jackson, Holly Cottage, Long Thurlow, Badwell Ash IP31 3JB. Tel: 01359-259944.

ELMSWELL W.I.

A large number of members and visitors attended the October meeting of Elmswell WI. Looking back over the past weeks everyone agreed that the 70th birthday celebrations. The Autumn Council meeting in Bury St Edmunds and the group meeting at Thurston had been enjoyed by all who attended, Janet Sparrow gave an amusing and concise report of the Council meeting. The visit to Snape Maltings will be remembered with pleasure, especially standing on the stage and singing 'Jerusalem', we sounded terrific, the accoustics are so good.

We were all interested to hear from Sue Clements about the work of "Rethink Disability".

Jean Mason again won the monthly competition, there were some very colourful pumpkins, but hers was voted the winner.

November is the AGM of Elmswell WI, this will be followed by a demonstration of Christmas Crafts.

Jeanne Crook. Tel: 01359 241591

ELMSWELL BAPTIST CHURCH

Three thank you's. Firstly to the local scout/cub/beavers (and one brownie) for their participation in our harvest/parade service. It was great fun, and I am sure everyone can remember the names of all the parts of a flower. Secondly for my Dad and uncle for providing us with an indoor toilet. We shall at the start of November be celebrating our first flush. Thirdly to Jo Royle - enough said.

Also during the month of October Marion from our church has spent the month in China visiting various underground churches and helping to distribute bibles etc in what can be quite dangerous situations. We hope to welcome her back in November and hear all about it.

Now for November. I am glad to say that our CU club has doubled since the beginning of term and we now average around 19 with new ones arriving all the time. On 4th November we have our 2nd birthday party in which all the children are invited to bring a friend (that rules me out). Please do, it will be a great evening and a good introduction if you have not been before. It starts at 6pm and finishes at 7.30pm. On 8th November the CU Club and parents are off to Ipswich to have a good time and watch some enjoyable entertainment. I know what you're thinking but Ipswich are away so we shall be going to the Regent to enjoy Joseph and his Technicolour Dreamcoat. If you are going yourself at 5pm say hello to rows S and R, we'll be the quiet ones at the back. On November 29th I am sure we shall be entering a team for the cricket club quiz.



Rumours of Angels

The Elmswell Fellowship of Churches
presents

**A MUSICAL FOR THE
ADVENT SEASON
SUNDAY 30th NOVEMBER
at 3pm
at The Blackbourne**

**Tickets - Adults £2 Children £1
~ includes refreshments**

**Available from the Post Office,
the churches or telephone 240444**

Around and About cont'd., pg7

Make sure there are plenty of peanuts, and we shall try to get above 2nd this year (from last). You may as well bring a sleeping bag and stay over in the hall as the churches together are performing their musical on 30th at 3pm. You'd better make sure the hall is cleaned and all the bits of torn answer sheets from the bowls club are picked up!! On the 1st December - wait for it - we have the Ladies Friendship Group (with men invited) gathering for their yearly Christmas Nosh and Natter. The whole village is invited this year and if you are not all quizzed out by then, there will be a music quiz this year, by my good self and a proper musician.

More about that dreaded word that sends shivers up those allergic to shopping next month.

Finally a big thank you to Stephen and his wife for their first year of helping us out at Elmswell, I am really pleased that they are willing to stay around another year. You can contact either Tony or be forwarded on to Stephen by phoning 241541. Also if you are interested in coming to any of the above, especially the Nosh and Natter (for catering purposes) please phone the above number.

See you in December if not before.

Mark

GARDENING CLUB

October's meeting saw a good turnout, even though it was on the same nights as the Village Quiz.

Maurice, our chairman, introduced Mr Sharman who spoke to us on "Collecting Plants in the Wild", and he was a first class speaker. We were amazed to hear about the intricacies of collecting wild plants and subsequently their introduction to our gardens, and enjoyed seeing slides of the wild plants and their original locations.

The competition was an arrangement of seed heads and was won by Margaret Hitchens.



The November meeting on Thursday 20th is the AGM. Please come and support your Gardening Club and perhaps your special interest can be included in the future programme.

ELMSWELL FOOTBALL CLUB

Club Sponsors: Mirror Group Newspapers

First Aid Sponsors: Euro Food Machinery (Elmswell)

Match Day Sponsors: Harris Cuffaro Nichols (Solicitors, Old Harlow, Essex)

Summer School Sponsors: Wells Stitched Embroidery (Elmswell)

1st Team Sponsors: Wilsons Transport (Elmswell)

2nd Team Sponsors: Elmswell Fox

Match Ball Sponsors: Rota-Rod (Bob Barter), Travelstop (Elmswell), Stowmarket Golf Club, Tulipa Landscaping (Elmswell)



SPANISH



Can you order your
"cerveza, vino y tapas?"



WHY NOT LEARN?

**Phone Andrea Alderton
in Drinkstone
on 01449 736542**

Around and About cont'd., pg9

1st Team Manager: T Price. Assistant J Vickers.

2nd Team Manager: M Hart. Assistant T Ellis.

Under 14 Sponsors: Abbots Estate Agents (Manager P Case)

Match Ball Sponsor: W Jarvis (Landscaping Elmswell)

Under 11 Sponsors: D J Fishbar (Elmswell)

Over 35 Sponsors: C G Finch & Sons.

Monthly Draw October drawn by N Talbot

No 340	D Cady	£50
No 251	J Hayward	£35
No 63	M Sapsford	£25
No 134	J Reid	£15
No 108	S Harris	£15

First Team Results

20 September - Stag Tavern (Away)
Omnicup won 4-3. Scorers P Swallow 2, J Vickers 2.

27 September - Queens Head (Home) S J C won 5-0. Scorers P Swallow 2, J Vickers 2, M Peachey 1.

4 October - Coddendam Country Club (Away) lost 4-0.

11 October - Wenhaston (Home) lost 2-0.

18 October - St Clements (Away) won 2-0. Scorers J Vickers 1, T Burch 1.

25 October - Fornham St Martin (Away) S J C lost 5-0.

Sorry no Res results but not to hand at time of print.

Youth Teams

After a very successful tournament for our village teams in this year's tournament for our Under 10s and 11s we as a club would like to know as to why, when we had put in place managers, sponsors and leagues for these teams we are now unable to fulfill them as the boys are going to other villages to play. This has cost us £50 in fines.

Maybe some of the parents who bring their boys up for training on Wednesday nights, then take them elsewhere to play, would like to come to one of our monthly meetings (first Monday in every month) at The Fox and enlighten us.

Saying "our son wanted to go and play with his friend in another village", is the old saying. Why not get his friend to come and play in this village? or is his friend more dedicated to his village?

Maybe we should forget about running the summer school and let them go and train in the other villages. So come on you mums and dads! Come up to one of our meetings and let us know where we are going wrong and try and help us keep our good young lads playing for this village of Elmswell.

Anyone wishing to join the Football Club please telephone Barry Hayward on (01359) 240951. Training nights Wednesday nights Blackbourne at 18.15.

Compiled by H Mulley (01359) 240889

WOODWORKS

CARPENTRY & HOME IMPROVEMENT

- Quality work - interior / exterior
- Competitive rates
- Small jobs welcome

Call Steve Humphrey
on (01359) 241551
or mobile: 07879 868936



Around and About cont'd., p2 | 1

ELMSWELL CRICKET CLUB

Sponsored by Manvers Triumph



First, an unashamed plug for our **Entertainment Quiz** on November 29 - contact myself or Graham Newman 240846. Just £2 per person with up to six people allowed per team. Book now if you haven't already... As they say abroad somewhere, Da Entertainment Cquiz As Fun (DECAF).

Next, we have our AGM - at 8.00pm on December 2nd in Elmswell Library. It may be hard to believe but it's probably not quite as exciting as the quiz. No doubt, we'll have the usual financial crisis. Actually, it's more a tradition than a crisis as it occurs regularly at this time of year. After Christmas I could write in my pristine filofax pages for next November. "ECC to suffer financial crisis (practise grovelling...again). We tend to cruise for most of the season on a zero-type bank balance, probably much in the way money-launderers do (not, I hasten to add, that we're familiar with that activity). We act more as a conduit through which money passes on the way to the BMA, various cricket associations/leagues, makers of equipment, suppliers of weapons of mass destruction, barbecue merchants and, of course, distributors of alcoholic beverages. A combination of ignorance, forgetfulness and imaginative accounting usually sees us through.

The likes of Enron might have financial

officers involved in corruption. We, at least, are immune - basically because we have nothing worth corrupting. As far as building reserves is concerned, it's a little like trying to score runs on a Sunday then arriving at the other end of the wicket to find the umpire signalling leg byes... all afternoon. Come May and our margin for financial error will be especially slight and an informal policy of austerity operates. Second new ball? Why not just get a little more wear out of the first? After all, it's slight red isn't it?

So Stan King, our revered Hon. Treasurer, will once more report on the Club's finances. It's always a bit of a strain. We could fund our Club on the loose change in Tim Rice's pockets. But to do so we would have to find his dry cleaner, apply for a job, work our way up to a level of responsibility in the organisation so that we were trusted with Tim Rice's suits, then rifle his pockets in search of the copious coinage he doubtless possesses. And this plan fails on a number of levels - such as that none of us particularly like ironing. If we did, we wouldn't look like we do on a Sunday afternoon. Anyway, Stan's report will, as ever, sound like an inventory of Old Mother Hubbard's cupboard. Our financial limits seem perfectly endless. "The situation's a bit worrying" the Captain will say - which is worrying in itself. He normally will only intervene when the bar credit reaches three times consolidated revenue. But, as he invariably explains,

~~ **Novelty Cakes!** ~~

You create the idea - Let me create the cake!

Free Delivery within Elmswell

Jean Barker ~ 01359 241135

Cartoons ✓ Sports ✓ Animals ✓ Hobbies
Anything!...



Around and About cont'd., pg12

while having no money is merely a bummer, having insurance costs of £500 due at the same time is a major bummer indeed.

Perhaps we could apply for a grant? Or get an interest-free loan for a year? Yes, if we took out a £1,000 loan we could pay the insurance - we're geniuses again. Better still, we'd have money to spare - club jacuzzi, Scandinavian masseuse for match days... perhaps we could hire a professional player? A debate could ensue over whether Adam Gilchrist might be enticed to the village to replace Steve Jordan? On the other hand, reality bites. Hence, our quiz night.

This can make the difference between having next to no money, and no money at all - and that's quite a difference. I suggested several years ago now that we do this at a time when I'd failed to grasp the principle that those who suggest, do! Anyway, please come along. You'll make our Chairman happy. Our Treasurer will shower you with thanks for the income. Our waiters will satisfy your every demand...for drink...as long as you pay up-front. Our scorers will add everything up properly. You could win a raffle prize - Caribbean cruise for two, oriental silk carpet, magnum of Champagne (OK...perhaps that's an exaggeration) - but you'll derive tons of satisfaction when you reach into the recesses of your mind to answer the one question that nobody else can figure out. At least they won't be as tricky as this: *Where in London would you find a Scottish fishing village, an Eastern European country, a South American river and a city in central Russia?* Perhaps Mark (Elmswell not Wetherden) knows? I'm sure our scouting friends do?

Lastly, a big thanks to Dave Anderson for his assistance with our end-of-season pitch work. His help was invaluable and enabled several older players to go home with their backs aching...but in place!

Doug Reed (Tel 241009)

Elmswell CC Century Club

September Draw

£15 E Keeble (No 84), £10 G Newman (48), and £5 S Jordan (105)

October Draw

£15 P Basset (82), £10 J Bassett (86) [we couldn't believe it either!] and £5 A Barnsdale (10)

November Draw

£15 C Hewitt (3), £10 R Hatton (11), and £5 J Batten (83)

MSDChat

The last few weeks at MSDC have been



notable less for actual decisions than for the framing of proposals which directly or indirectly will impact upon Elmswell residents. If you use **Stowmarket car parks** then you could find significant changes being put into effect from next April. Of three options put to the Council's Economy Policy Panel, the Conservative members favoured that which would, potentially, generate the most income. The proposed new scale of charges has to go out for formal consultation but if approved it will mean big increases, e.g. up to 50% if you use the car park behind Asda. Worse still, if in living this side of Stowmarket you currently use the Bury Street car park (which is undoubtedly convenient) then you'll find it is scheduled to become a 'long stay' park and the minimum charge will be £1.00. We and other Lib Dem councillors are strongly against the proposals and intend fighting them all the way.

Mid Suffolk Leisure Centre is also in the spotlight. The provision of sport and recreation is a discretionary service for councils but, fortunately, there is no question of this not being offered. However, there are serious concerns about the costs involved in delivering the service with income levelling out, and ageing facilities and equipment requiring increased maintenance. Options for the future are to be considered as a matter of

Around and About cont'd., p215

urgency, with some sort of public/private arrangement a possible solution. As ever, we'll endeavour to keep you informed of progress.

Next, the Council's Scrutiny Sub-Committee (which reviews actions taken and policies adopted by the Council) received a report that **grounds maintenance** (including grass-cutting) services had been the subject of less complaints this year and so agreed to recommend no change to the present policy. This is another decision which we are exceedingly unhappy about, and not one that we support. Elmswell is a 'customer' of MSDC in this situation and the result of the decision is that the present frequency and quality of grass-cutting to open areas (The Blackbourne etc.), which is already unacceptable, will be unchanged. A better solution has to be found.

Finally, Carol and myself gave Andrew Good, Chief Executive of MSDC, a 'guided tour' of Elmswell recently - showing him all the key sites and areas of concern. During the visit he also met with representatives from the Parish Council. We believe he's gone away with a better understanding of the village as a result.

Should you need or like to contact us, then please do not hesitate:

Carol Milward, 38 Petyman Avenue,
Bacton IP14 4NY. Tel: 01449 781810; e-mail: carol.milward@midsuffolk.gov.uk; or myself

Doug Reed, Second Thoughts, Church Road, Elmswell P30 9DY. Tel: 241009; e-mail: doug.reed@midsuffolk.gov.uk

ELMSWELL TODDLER GROUP



Another busy month in the lives of Elmswell Toddlers goes by, but hopefully enjoyed by all. It started with the "Nearly New Sale". This was a great success with over £1,000 of items changing hands at bargain prices. The next "Nearly New Sale" will be held in March '04. A big

thank you to all the helpers on the day. On the 6th we visited the Elmswell Fire Station. Toddlers (and mothers too) enjoyed an afternoon exploring the Fire Station. The obvious attraction was the fire engine with the toddlers getting the opportunity to climb aboard. Many thanks to Elmswell's fire fighters for their time and hospitality. Another visit is planned for 19th November.

A visit to Ocean Playworld at Mid Suffolk Leisure Centre in Stowmarket on the 15th was a big hit with the youngsters. The next session there is on Monday 19th January 2004.

On the evening of the 15th a "Cheese & Wine" evening was hosted by Caroline. This was well attended and encouraged a few more mums to volunteer their help in the running of the Group. Thanks to Angie and Machaila for volunteering to manage the Tea and Craft rotas. If anyone else is interested in lending a helping hand, please contact Caroline or one of the Committee Members.

The following evening saw another social event for the grown ups, this time at Bingo in Bury. Congratulations to all the winners that night and better luck next time to all those who struggled to tell the difference between two little ducks and clickety click, not to mention the two fat ladies!

Don't forget the Christmas party on Sunday 14th December. Put your names down if you haven't already.

Elmswell Toddler Group meets every Monday 1.30-3pm and 10-11.30am at Wesley Hall. If you haven't already, wander down for a free trial session -

CLASSIFIED ADS

CHRISTMAS POULTRY AND BEEF - orders taken now for a limited number of traditionally reared Geese, Bronze Turkeys, Cobb Chickens and Angus x Beef. Tel: 01359 244244.

Around and About cont'd., p217

there's loads to do for babies, toddlers, parents, grandparents, aunts, uncles and carers - the more the merrier!

Claire Raffel, Committee Member

ST JOHN'S CHURCH, ELMSWELL. Remembrance Sunday will be on 9 November, the service will commence at 10.30am and will include the laying of wreaths by church and village representatives, following the two minutes' silence. On Armistice Day, 11 November the Church will be open for a short time of reflection and prayer, from 10.50am.

On 15 November at 2pm at The Blackbourne we shall hold our annual Autumn Fair - this is one of our main fund raising events for Church funds and we hope that you will join us. Admission is free and there will be cakes, greetings cards, gifts, games, competitions, raffles, tombola, refreshments, books, bric-a-brac, hand made jewellery, etc. etc.

The Friends of St John's Church, Elmswell

This year the Friends have commissioned a Christmas card which we are selling to raise funds for the Church fabric. The picture is the reproduction of a water-colour painting by Liz Nicholson and depicts the Church on a snowy night. These are available in packs of five cards at £2.50 a pack - from Jean Folkard (Tel: 242099) as are aprons, bookmarks and keyrings.

Unfortunately the 'Pies and Puds' Supper planned for 25 October had to be postponed. The winner of the Friends' Quiz was due to be announced at the Supper - so here are the results - First Prize £20 - Doug Reed, second prize £10 - Anthea Smith. Thanks to those who took part.

The Elmswell Fellowship of Churches The Barn Dance and Social Evening on Saturday 4 October at the Blackbourne with our own band and caller was such an overwhelming success! The big question on the night was - 'when's the next one?'. Watch this space.

Our next joint venture is an Advent Musical by Graham Kendrick - 'Rumours of Angels' on Sunday 30 November at 3pm at The Blackbourne. Members and friends from the three churches are taking part - the music is lovely! Tickets will be on sale at the Post Office or the churches or telephone 240444. Adults £2, Children £1; there will be refreshments and a warm welcome. Numbers are limited, so buy your tickets now to avoid disappointment.

Services, etc at St John's Church, Elmswell

Sunday 9 November

8.00am Holy Communion

10.30am Remembrance Sunday Service

Tuesday 11 November

10.50am Church open for Armistice Day

A short time of reflection and prayer



TaxAssist Direct

**The Tax and Accountancy Service for
Small Businesses and Taxpayers**

Self Assessment, Tax Returns, Annual Accounts, Book-Keeping,
Employed, Self-Employed or Starting a New Business

For a free initial discussion without obligation call

Clive Jenkins. Tel/Fax 01359 242284

Around and About cont'd., pg 18

Saturday 15 November

2.00pm Autumn Fair at The Blackbourne

Sunday 16 November

10.30am Holy Communion

Sunday 23 November

8.00am Holy Communion

10.30am Morning Prayer

Sunday 30 November

10.30am Holy Communion

3.00pm 'Rumours of Angels' at The Blackbourne

Fellowship of Churches Musical

Sunday 7 December

9.30am Family Service

11.00am Morning Prayer

12noon Holy Communion

Sunday School in the Church Room at

10.30am every Sunday except 1st in month

St John's Church Tower Floodlighting

A night's floodlighting costs £5. Please make cheques payable to "ST JOHN'S CHURCH, ELMSWELL"

October 2003 sponsorships not previously acknowledged

10 in loving memory of my dear daughter, Ruth Manning, on her Birthday. Lots of love, from Mum and family

24 in loving memory of Bernard Booth

25 in memory of my wife, Rita Bennett, on her Birthday

November 2003 Sponsorships

2 in loving memory of John Philip Parsk, a dearly loved Husband, Dad and Grandad

6 in loving memory of Dorothy May Nunn

11 in loving memory of Ena May Clover

12 in loving memory of Thomas Henry Manning

15 in memory of the 11th anniversary of the death of Wally Fraser

26 in memory of Margery Rose Cammell

28 in loving memory of Amy Pleasance

28 in memory of Evelyn Clark

All bookings and payments please to:-

Trevor Sadler, Abbots Warren, Church Road, Elmswell (Tel: 240908)

ELMSWELL MILLENNIUM HISTORY GROUP

The History Group meets on the second Thursday of the month at 7.30 pm in the Church Room (inside St John's Church), unless otherwise advertised (members £1, non-members £2.50). Those at our well-attended October meeting were informed and entertained by Colin Cooke talking about church bells in general and, particularly, those in the tower above us. His talk was illustrated by (hand)bell ringing, a working model of a bell in the Norman Tower in Bury St Edmunds, a video of a bell being made, and casts of the inscriptions on our bells, which are evidently pretty special.

The oldest, with a Latin inscription asking for the prayers of St Edmund (Sancte Edmunde ora pro nobis) was made in Bury between 1450 and 1530. Another is inscribed with the name and town of the bell-founder, as well as the date (Stephanus Tonni me fecit 1582, de Bury S. Edmundii). The tenor bell was cast at Thetford (John Draper made me 1616) and the treble at Bury (Robert Gurney made me 1670). The most recently made bell came from an Ipswich foundry (John Darbie made me 1677).

Colin's researches into the foundries and the families involved gave us a fascinating glimpse of the craft over an eventful couple of centuries spanning the Reformation, the Dissolution of the Monasteries and the Civil War, and his enthusiasm for his subject was contagious. We are greatly indebted to Jean and Derek Folkard for arranging such a treat for us.

The subject of Ashley Cooper's talk on Thursday 13 November is three hundred years of countryside history. Mr Cooper

Around and About cont'd., pg21

has written about life along the Suffolk-Essex border in books such as Heart of our History and The Long Furrow and, with his father, has built up a museum of ancient artefacts and more recent by-gones, housed in barns on their farm. On 11 December Johnny Stone, of the Mid-Suffolk Countryside Management Service, will trace the history of hedgerows.

Enquiries to Norman Kenyon on 01359 241569. www.elmswell-history.org.uk

LITTLE ACORNS

Children of Elmswell Primary School have been busy planting seeds in their very own tree nursery as part of the Elmswell Community Wood project.

The School has started a programme of activities to learn about trees - how they grow, how to look after them and the role they play in providing habitats for wildlife. All the activities are linked to the National Curriculum and the whole programme is overseen by the Green Light Trust Charity. Parents and children got together with members of the Elmswell Community Wood steering group to make the tree nursery and fill it with topsoil. The nursery is a raised bed made of new birchwood sleepers - a very sturdy construction which should last for many years.

After an exciting presentation all about trees and woodland, the children hunted around the school grounds for acorns and hazels and each came back with their own special seed to plant in the nursery. Next year they will watch over their seeds as they germinate and grow into seedlings. Eventually we hope they'll be able to plant their little trees into the community wood.

THANK YOU!

- To Hopkins Homes for the donation towards materials for the tree nursery.
- To R&D for donating and delivering the topsoil.
- To Richard Sylvester of Green Light Trust, members of ECW steering group and the school staff for helping with the school

presentation and seed planting.

- To everyone who helped with the construction.

Don't forget our AGM on Tuesday 18th November, 7.30 at the Blackbourne. Everyone is invited to come and find out how the project is progressing.

Mary Feeney, Tel: 241901

METHODIST NEWS

Women's Fellowship speakers at 2.45pm Tuesdays:

Nov 11 Mr Alan Newcombe

Nov 25 Capt. Philip Nield, Salvation Army

Dec 2 Mr John Bean

Dec 9 Carols and Mince Pies

The Exchange Club are off to Thursford Christmas spectacular on 18th November.

A coffee morning will be held on 20th November - this will be the last chance to join us for a coffee until we re-commence in march 2004. There will be a bargain sale of Christmas Cards, don't miss it!!!

Preachers appointed to lead our worship at 10.45am each Sunday

Nov 9 Revd. Peter Dainty

Nov 16 Mrs Maureen Newcombe

Nov 23 Mr Brian Clow

Nov 30 Revd. Stephen Yelland

Dec 7 Mr Gordon Steed

Dec 14 Mr Graeme Garden

We are planning further extensive improvements in the car park area of the church, and we hope this will take place in the next few weeks.

ELMSWELL SCOUT GROUP



First of all, we would like to ask members of the Gardening Club a favour. Is there anyone who could rotate the scout allotment with our help? This month we have been working steadily towards our International badge. So far we have visited Switzerland - a talk by a parent followed by cheese fondue; Holland - a display of badges and photos from

Around and About cont'd., pg23

previous scout visits, "walking the dykes" and frites and mayo; the USA - the "Gold Rush" with hot dogs and popcorn, and a Tour De France with a bike check. This should have been followed by Frogs' Legs and Escargots but the frogs had hibernated and there aren't many snails in Elmswell so instead we had hot chocolate and petits pains avec confiture d'abricots, 24 of which lasted all of two minutes. Each week we also take home questions on each country's history and geography and fill in a quiz, learning phrases such as Please, Thank you, and I'm sorry, I do not understand (!) in eight languages. It's Italy after half term, and no, we won't be having Spag Bol; the results don't bear thinking about - and that's only the leaders...

We had a good turn out for the Baptist Harvest Festival and would be very willing to act as a rent a crowd for the Cricket Club though cheering would naturally be extra. The camp was postponed until next Spring (brrr.) Next month we are attending the Remembrance Day Service at St John's, having a policewoman to etch our bikes and talk to us about drugs, and the moon will be coming to Elmswell.

On December 6 there will be the usual megajumble sale in the Methodist church hall from 11am to 2pm. Garages are already filling up fast. If you have any good quality items to donate, please would you ring 244290 or 242675 and we will collect them.

Down by the Beaver Dam

On October 11, four leaders and 13 beavers visited the Discovery centre at St Edmundsbury Cathedral. We told our host Helen who we were in a song. We learned about the cathedral's history, took part in a play about St Edmund and then followed his trail in the Edmund Story. After lunch and some time in the playground we did the Abbey Trail in the gardens with the help of John, the retired Head Verger and went back to the Centre for some craft work and songs. We then caught the bus

home, to be congratulated by the driver for being so well behaved.

The beavers were a credit to themselves and to the village. It was a most enjoyable day.

Squirrel (B.S.L.)

If any of your children would like to know more about Scouting, please phone Skip on 242675.

HELPING HAND CLUB

Our Harvest Supper was a very happy evening for all concerned. A super meal prepared by Tina and Sylvia was greatly enjoyed. Sincere thanks to them both for all their excellent service and hard work. This was followed by some superb entertainment by Elmswell's very own musical duo namely Helen and Graham Tilney whose choice of music and songs was a joy to the ear. I've had many requests from our members to see whether they



ELMSWELL COMMUNITY WOOD

Notice is given of the Annual General Meeting

to be held on
**Tuesday 18th November,
7.30 p.m. at the Blackbourne**

Nominations are invited for
the Steering Group.
Please submit nominations in
writing to the Chairman
by Tuesday 11th November

Everyone is welcome to attend to hear
how the project is progressing.
There will be refreshments and an
illustrated talk on veteran trees.

Around and About cont'd., pg25

would be willing to come and give us some more of the same at our Christmas party (time will tell). We all hope the answer will be yes. Our October 23 meeting was a great evening of slides of yesteryear Stowmarket. Ron Godbold took us back in time for a great evening of Nostalgia. So good to see the steam trains in the station and all the lovely old shops that are no longer there.

Until next month. **Best wishes, Stan**

AMENITIES ASSOCIATION

At a recent meeting of the Trustees, in recognition of the agreement of the Parish Council to terms which allowed the settlement of the County Court case which had been in train for many months, it was agreed that a grant of £15,000 be made to the Council towards the Blackbourne Project, specifically to offset some of the build cost of the new bowls pavilion.

It was also decided that the money which

is currently invested as the proceeds from the sale of part of the Trust property at Cooks Road should be only used to further the development at Blackbourne in a significant way, such as towards a further major phase of development to accommodate a wider range of activities. This is in line with the original and long held view of Trustees over several years. Any project would have to accord with the Charitable Objects of the Association and would need the consent of the Charity Commission. Accordingly, a multi-purpose facility would have to result, although there was common agreement that facilities which were of benefit to the young people of the village deserved priority. It was agreed that a letter should go to the Parish Council suggesting a joint exercise towards adopting a scheme towards which Amenities funds might be pledged as 'pump priming' to attract further grant aid.

Come along and celebrate with us at a

TARTS & TRAMPS

NEW YEARS DANCE

at Harris Social Club, Elmswell

December 31st 2003

8pm - 12.15am

bar disco buffet raffle

tickets £5.00

Tickets from: Val 01359 241708
Richard 01359 270917

Profits to BHF

Letters to the Editors

Letter to Ed from Marion and John Petchey and Gertie Wallace

... a great success ...

We held another Country and Western at the Blackbourn. Once again it was a great success £425 was raised for F5 Ward, West Suffolk Hospital. We are having another Charity Dance at Wyverstone Village Hall new Year's Eve. All welcome. Thanks to all who supported us and gave draw prizes. (tel: 240513).

Letter to Ed from Louise Waters of The Suffolk Helpline

Drugs and alcohol concerns?

If you live with, know of someone, or are affected by someone else's use of drugs or alcohol there is local, free and confidential service for advice, information and emotional support.

The Suffolk Helpline is open Monday to Friday 10am to 6pm. (An answer phone is available out of hours). We are here to help those coping with a family member, friend, partner or anyone else's drug and /or alcohol use.

For young people our service is expanded to cover any concern they might have about their own use of drugs or alcohol.

We can provide details of the services available in the Suffolk area as well as providing weekly support through our Families and Carers Community Support Service which aims to help improve coping skills and develop awareness and insight into drug and alcohol use.

There is no need to feel isolated or alone, for further information contact the Suffolk help line on free phone 0808 800 11 22.

From the Fayre Organisers

... **Thank You's From Terry Southgate** ...

I would like to say sorry to the Helpers I forgot to mention after the Fayre.

Travel Stop for sponsoring the draw for the 9th year running, that adds up to quite a lot of money over that length of time. So if you need a holiday next year, give them a call (see their advert on back cover).

The next one I forgot was a new company just started out but still found a lot of time to help out. Dave Anderson Light Haulage &

A.L.W. Electrical Contractor

All Commercial &
Residential Electrical
work undertaken by
experienced and
qualified engineers.

Ring now for a
competitive quotation:
**01359 241677 or
07887 614902**

Courier Service. Dave is the man with a van if you need one.

How could I forget little Elliott and Isabelle Stribling, they were running from one corner to the other of the playing field picking up rubbish left by others. Thank you to you two for looking after your Mum and Dad.

Letter to Ed from Jeremy Crook of Ellington, Cambridgeshire

... try to get on with each other...

Despite having moved away from the village your publication is always read during visits to my mother who still lives in Elmswell.

I have fond memories of the village, and can only express disappointment at the persistent political wranglings and personal attacks that are published monthly for all to read.

You may choose not to print this letter - if you do my message to all concerned is grow up! Elmswell has an awful lot going for it, shops, schools, Blackborne, etc, etc, etc.

Enjoy the village and try to get on with each other.

Letter to Ed from Connexions

Free support service for Elmswell teenagers

If you're aged 13 - 19 then Connexions is here for you.

Whatever you want to do, there are things to be sorted out. Of course you will get advice from all kinds of people such as your parents, carers, or teachers. But sometimes you need independent or specialist advice and this is where Connexions can help. And it's all FREE! If you have extra needs we can help you till you are 25.

Our specially-trained Personal Advisers and Recruitment Advisers can help you with next steps at school, college or training, getting a job, sorting out housing and money, or personal issues which may be just getting in the way. If we can't sort things out then we will find someone who can, and support you though it.

Ring our Freephone number to find out where you can meet an adviser, somewhere convenient for you. Personal Advisers work in all schools and colleges - ask at reception where you can find them. You can also talk to an adviser by dropping into one of our Connexions Centres, emailing or phoning us.

Our website, www.thesource.me.uk has masses of information about school, college, training and employment choices, as well as personal issues. You can even webchat with an adviser in complete confidentiality. If you register with the site you can also look up the latest job vacancies near where you live.

We also want young people to help us plan and design our services. Getting involved will help you make friends, gain confidence, and learn lots about yourself. You can help us with managing our website, designing publications, recruiting and training new staff or re-designing our premises, as well as lots of other fun things. Just give us a call!

You can find out more if you check out www.connexionssuffolk.org.uk, Freephone 0800 085 4448, Email enquiries@connexionssuffolk.org.uk or drop in at our Connexions Centre at 43 St Andrews Street South, Bury St. Edmunds, IP11 3PH. Tel: 01284 768493.

Letter to Ed from Woolpit Health Centre

'Out of Hours' Arrangements - changes from 1st December 2003

The Doctors in this practice are joining the local GP Co-operative from the 1st December 2003. The GP Co-operative covers the 'out of hours' calls for local Health Centres and has been providing good quality care for a number of years.

These arrangements only apply when the surgery is closed from 6.30pm - 8.15am weekdays and from 12 noon on Saturday until 8.15am Monday, and on Bank Holidays. Normal daytime surgery working hours are unaffected.

The duty doctor to cover 'out of hours' calls may not be one of the doctors from this surgery but they will always be an experienced local GP.

The duty doctors on call are based at Stowe Health, Violet Hill, Stowmarket and Northgate Business Centre, next to Swan Surgery, Bury St. Edmunds. You will be asked to attend the nearest base to you if medical attention is needed. If you are too ill to travel a doctor will visit.

Therefore if the surgery is closed and you have an URGENT medical problem please telephone:- **SUFFOLK DOCTORS ON CALL 01473 299622**

This emergency number can be heard by phoning the surgery on 01359 240298 outside of normal working hours.

Letter to Ed from Sheila Baldwin, Prescribing Adviser, Central Suffolk NHS

Central Suffolk Medicines Amnesty

Central Suffolk PCT is holding a Medicines Amnesty from 10th to 22nd November when members of the public will be invited to return all unwanted, unused and out of date medicines to their local pharmacy or dispensing doctor's surgery for safe disposal. Unwanted and unused medication can be dangerous if taken inadvertently. The cost of this waste could amount to thousands of pounds each year in Central Suffolk, which would otherwise be spent within our local NHS on improving services.

From 10th to 22nd November 2003 you are invited to clear out all those unwanted, unused, out of date, pills, medicines etc.

Return them to your local pharmacy or dispensing doctor's surgery to dispose of them safely.

MOWERMAN LTD GARDEN MACHINERY

SALES - SERVICE - SPARES - CYLINDER GRINDING - NEW & USED MOWERS
RIDE-ONS - STRIMMERS - HEDGERS - ROTOVATORS - GARDEN TRACTORS, ETC

**FREE LOCAL DELIVERY • HIGHLY COMPETITIVE RATES
24-HOUR ANSWER SERVICE**

Aidan Kendall, MOWERMAN LTD, Blacksmith Road, Cotton. Tel: 01449 781157

Our Cover Picture Shows

A horse and cart...the latter bearing the name, 'Thurlow, Elmswell. It comes from a postcard recently acquired by Paul Peachey who has a fine collection of cards of Elmswell. This is a new one to him, and he would appreciate your help in identifying it as belonging to our village (rather than Elmswell, Yorkshire), naming the two gentlemen and identifying the horses – are they Suffolk Punches? Two other cards will be featured in coming months, but Paul is always on the lookout for more, particularly of the Fire Station, the old School, the old Police Station and the Railway Station. The majority of Pauls collection of about 110 cards have been placed on the Elmswell Millennium History Group website at www.elmswell-history.org.uk, and he can be contacted on 241517. Do give him a call if you can help with the picture, or if you have any cards which he might not yet have seen.

More nominees for a mention in the DECAF Rolling Roll of Honour ...

- ✿ Janet Baker - often seen litterpicking at Bunkers Hill
- ✿ Polly Finch - seldom seen without a bag full of other people's litter
- ✿ Jean Barker - sometimes seen in her pinnie litterpicking along School Road
- ✿ 'Fergie' Whatling - keeping Eastern Way clear of rubbish
- ✿ Gerald Curtis & the Milyard family for keeping Newson's Corner tidy
- ✿ Ray Eyres for keeping his corner immaculate
- ✿ John McAteer of Elmswell Contractors for removing the old street sign post at Cooks Road corner (long posts, big digger!)
- ✿ Bob Barter of Roto Rod for the use of his skip

**Let Roy Finch know on 241344 of other nominees - or to join in yourself...
DECAF - Driving Elmswell's Community Activities Forward**

Elmswell takes delivery of its latest fire appliance.



Elmswell fire station has just taken delivery of its latest fire engine; this replaces our previous Volvo that has gone to a station that has fewer calls than we do.

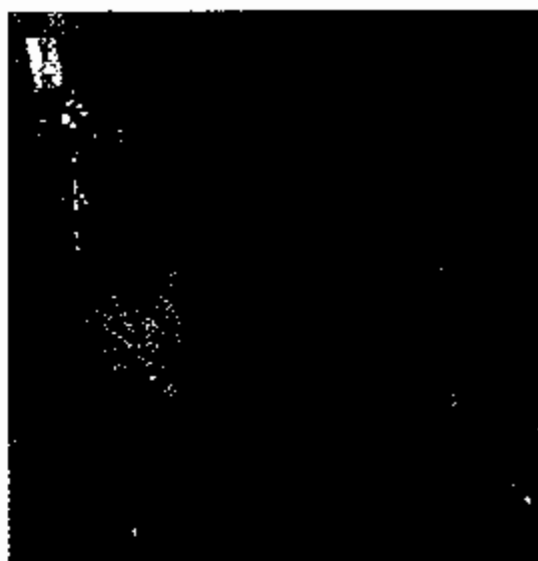
This 'Y' registered vehicle was previously based in Bury St Edmunds where it has been replaced by one of the most modern fire engines available in the country today.

Elmswell fire station receives an average of 250 calls per year. These can be anything from a road accident, chimney fire, major incident and even a horse stuck in a ditch. This 3 year old machine with its state of the art equipment will ensure that we will be able to deal with any incident that we are faced with in our own 'patch' and as back-up to our neighbouring stations. Our patch covers Elmswell's surrounding villages from Badwell Ash to Bacton, and Norton to Felsham.

Elmswell

Champion Golfer

2003



A delighted David Bicknell holds up the trophy.

On a sunny warm October day at Stowmarket Golf Club the golfers of Elmswell gathered for the inaugural championship to discover just who was the best golfer in the village for 2003. The competition organised by Paul Peachey and Ian Duncan was well supported both by the players and later in the evening by their partners at the presentation meal held at the club.

David Bicknell won the Championship trophy with 35 Stableford points from 7/8th of his 21 handicap. The shot of the day was on the toughest hole on the course stroke index 1 12th hole where he delicately chipped in from behind the green, almost certainly, the shot that won the competition.

David Robinson took second place on count-back from Ian Duncan with 34 points. David Bicknell picked the nearest the pin on the 2nd hole just edging out Joan Hunter who had also hit a tremendous shot over the river. Club Professional Duncan Burl won the longest drive on the tough 17th by just concentrating on hitting the fairway while everybody else opened up their shoulders to end up in the rough.

Controversy raged at the 18th hole, where the players gathered around the final green and watched from the balcony, with last tee shot of the day Ian Duncan put his ball much closer to the flag than Alan Crouch but was just on the fringe and therefore just off of the green losing out to the jubilant Alan. Amid the noisy banter the spectators didn't realise that David Bicknell was left with a testing putt that would eventually let him claim the distinction of Champion Elmswell Golfer 2003.

Many thanks to every one that attended, to all that supplied some super prizes and a special thanks to Ken & Joan Beale who donated a case of wine and didn't even play.

The championship trophy sponsored jointly by Falcon Promotions and CNB, was presented to David Bicknell by the newly elected President of the Society, Eric Peachey.

Any body wishing to compete in next years competition planned for Friday 1st October 2004 please contact Ian Duncan on 01359 244537 or Paul Peachey on 01359 244007.

Amenities Association

Village Quiz 2003



from l. to r. – David Wright, Janet Metcalfe, Pauline Last, Mike Last and Chris Last - Archimedes' Principals

There was a definite air of determination this year. Archimedes Principals, last years victors and with a line-up redolent of earlier victorious quiz superstars, were not going to win.

They did! But it was closer than ever before, fewer than 10 points in it with and 2 teams tying for 3rd place and two equal just one point behind them. Breathtaking stuff, particularly at the end when the scoring system threw a tantrum and refused to give the answers that really mattered.

In the end, as pictured, our winners celebrated their liquid success and retained the Muriel King Cup. The cash prizes to the best placed community groups went to :

St Johns Church £50.00,

Cricket Club £25.00,

Over The Hill Mob (Elmswell School PTA) £25.00.

Peter & Brig Edmonds set the questions, John Ibbetson kept score with technical support from Doug Reed, John Reed was Questionmaster, Paddy Butcher laid on the P.A., Muriel King arranged the team booking and organised her own team of caterers to lay on the excellent interval buffet, Peter Dow helped a bit and David Barker, Roy Finch & Peter Edmonds waited table.

Next years event will be on a Saturday in October. Watch your Newsletter for further details.

PARISH COUNCIL - GRANT AID POLICY

The Council has responded to the call for a simpler approach to grant aiding village causes by drawing up a new Policy.

The form on which application must be made has also been made much easier to deal with. Further details are available from the Parish Clerk on 244134.

Objectives

1. To provide funding for local organisations to purchase items of equipment.
2. To provide pump priming for local organisations to commence projects.
3. To provide assistance with running costs for local organisations in exceptional and non-recurring circumstances.

Recipients

Any club or bona fide organisation based in Elmswell is able to apply, together with any organisation based outside the village, but which provides services for Elmswell residents.

1. All applications must be made on the Parish Council pro forma.
2. All applications must be made before expenditure is committed.
3. All applications must be forwarded to the Parish Clerk for scrutiny by the Council's Finance & General Purposes Advisory Committee and recommendation to a full meeting of the Parish Council.
4. Grant aid applications will routinely be sought in April and October and considered at the next available F & GP meeting. Only in exceptional circumstances will application be considered at other times.
5. Grants will not be paid to individuals.
6. All bids will be acknowledged and processed as quickly as possible.

Limits

1. There will be no limit placed either on the amount of each application or the amount awarded to any one organisation.
2. No organisation will be able to make more than 2 applications in any 12 month period.
3. Grants awarded must only be used for the purposes approved.

Award Criteria

Each application will be judged solely on its individual merits and whether it meets the simple criteria outlined in this policy. In addition, Councillors may consider the following criteria when judging applications:

1. Who will benefit from the grant? How many people will benefit?
2. The financial situation of the applicant's organisation and their ability to fund raise.
3. The size of the Council's budget in relation to the size of the bid.
4. The non-profit making status of the organisation.

PARISH COUNCIL MEETING

The Ordinary October Council meeting was held at The Blackbourne on Monday 20th. 16 Members of the Public were in attendance and the following were amongst the matters discussed.

District Council Cllr Mrs Carol Milward and Cllr Doug Reed, our Ward Members at Mid Suffolk, reported on various matters. The Parish Council's choice of the naming of the new development of flats adjacent to the railway line, 'The Granary', has been adopted by the MSDC Executive. It was confirmed that the shortfall in Affordable Housing units in Mid Suffolk is running at 360 per annum. This is reflected in Elmswell, and Planning Committee site visits are to be encouraged wherever appropriate to view Planning Applications in the village. These Applications have, in the recent past, been viewed in isolation to the detriment of the overall result for the village. In a response to a question from Cllr. Mrs. Feeney Cllr. Mrs Milward confirmed that the Housing Needs Survey from which the Affordable Housing figures are reached, is in the public domain. In response to a question from Cllr. Hawes, Cllr. Mrs. Milward was unable to confirm that there was any plan to council tax as applied to pensioners Cllr. Reed confirmed that the Household Waste Strategy is currently being reviewed, that parking charges in Stowmarket look set to increase and that consideration is to be given to possible public/private partnership at the Stowmarket Leisure Centre which is running in deficit.

Web site Cllr. Alan Hall confirmed that Messrs. cnb.co.uk.ltd had not adequately satisfied the Council's formal instructions regarding the web-site which was commissioned by the previous Administration at a cost of £2,000. Much

of the misleading and factually incorrect material remains and the disclaimer, distancing the Council from the contents, has been only partially installed. The Clerk was asked to write to Mr Ian Duncan, the Company's Chief Executive who had, as a local resident, been a member of the Parish Council working Party which had originated and advised on the scheme, to seek his help in ensuring that his Company immediately fulfils the Council's stated requirements within the terms of the Contract.

Grant Aid It was agreed that the Application from the Luncheon Club for a grant of £200, which had been made some 18 months ago, should be met in full. The careful husbandry of the last 6 months having allowed for the identification of funds which might be used for grant aiding village initiatives, a new Grant Aid Policy was tabled by Cllr Mike Schofield and unanimously agreed. Together with a simple one-page application form it removes the unnecessary bureaucracy of the previous system which had deterred many applicants. The details are to be advertised in the Newsletter.

Standards Board The meeting noted a further letter from David Ruffley MP from which it concluded that he had taken offence because the Parish Council disagreed with his view regarding the recent legislation which had set up the Standards Board for England (SBE) to oversee the propriety of Parish Council

activities. The Chairman expressed the opinion that the Parish Council's letter answering Mr Ruffley's original Press Release on the matter accurately reflected what had been agreed at the last meeting and that he considered that that Mr. Ruffley was possibly being disingenuous in his confusion between the 'registration' and the 'declaration' of Councillors' interests. Cllr. Mrs. Feeney supported this view, pointing out that the two words had very specific meanings in the relevant legislation and quoted from a press release issued by the SBE in response to similar criticism from Mr. Ruffley's colleague Mr. Ian Duncan Smith to the effect that the 'action of some are damaging their own Councils and damaging local democracy as a whole'. Cllr Feeney, who has herself recently been cleared by the SBE against accusations brought by the previous Council Vice Chairman, Mr Tony Clark, pointed out the invaluable outcome which had resulted from the Board's finding against and disqualification from Office of the previous Chairman, Ronald Curry in saving the village's footbridge site at Crown Mill. It was agreed that the matter might best be left to lie.

BMA Agreement The Chairman explained the framework within which the draft Agreement between the Council and the Blackbourne Management Association had been drawn up in consultation with BMA members. The document seeks to put the relationship between the two bodies on a more sensible and workable footing than had previously maintained and after discussion it was agreed that the document should go forward towards adoption.

Planning results The Meeting noted the granting of Planning Permission for the erection of a chalet bungalow to the rear of Longlands in Spong Lane off Church

Road to which the Parish Council had objected. Mid Suffolk's reasons for disagreeing with the Parish Council view were noted. The granting of Permission for an extension at 3 School Road for the purpose of running a small catering business, personal to the Applicant, was also noted.

Planning Applications Councillors raised no objection to proposals for:

- a) the refurbishment of an outbuilding to form an annexe to Willow House in School Road;
- b) details pertaining to the erection of a one and half storey domestic dwellings on land to rear of 8, Hawk End Lane;
- c) a conservatory at 19, Warren Close;
- d) a porch extension at The Links, Church Road ;
- e) the retention of two non illuminated ten metre high house development boards, A14 east bound at Elmswell and A14 west bound at Woolpit on behalf of Hopkins Homes.

However, after considering an Application for the amendment of the turning area and erection of play house in the front garden of Osprey House in Hawk End Lane, Councillors urged the District Council Planning Committee to visit this site and consider the application in the light of the professional advice available to them regarding the adequacy of the space which would remain, with particular regard to the fact that recent permission at Rose Field, immediately adjacent , and the current proposal for the Last House, immediately opposite, will inevitably impose further strain on the highway infrastructure. In any event Councillors felt that this turning area should be clearly signed as such and left available for public use at all times.

Councillors also urged rejection of the application for the erection of two

detached dwellings on part of the garden land at Bonanza in Spong lane, off Church Road, for reasons which they had already given in respect of similar recent Applications, i.e.:

1. Spong Lane is unmetalled, narrow, unclassified and unadopted with no footways or public highway areas for turning. It is single-track road which serves as an access for large agricultural vehicles and machinery. It cannot, safely, take further traffic and the situation regarding emergency access gives considerable cause for concern.
2. Spong Lane is a well-used Public Footpath giving access to Kiln Meadow Wildlife Area which can only be approached on foot. There is already dangerous conflict between vehicles and pedestrians which can only be exacerbated should the lane be required to service further development such as is proposed here.
3. There is the danger of vehicles having to back on to Church Road to allow on-coming vehicles to leave Spong Lane. The proposal is, for this and other reasons as already detailed, in direct conflict with the Local Plan Policy T10 regarding highway safety.
4. The proposal, if permitted, would set a precedent attracting further similar Applications from properties served by Spong Lane and having large gardens, compounding the problems instanced above. Outstanding applications would result in a total of 9 dwellings served by Spong Lane which originally only provided access to 4 houses.

Affordable Housing Cllr. Mary Feeney reported on the recent ACRE/ SALC Social Inclusion Conference which had included a workshop on Affordable Housing. She confirmed that the Planning

Committee had decided to approach the Rural Housing Enabler from ACRE to come and speak to them and Greg Dodds of Mid Suffolk District Council is also to be invited. She reiterated her fear that the framework soon to be adopted by Mid Suffolk District Council defining the Affordable Housing concessions to be required of developers would leave Elmswell effectively no better off.

Youth Working Party Cllr. Tracy Murphy tabled a report on the Youth Working Party meeting held on 23rd September. She confirmed that the strategy which she intended to adopt was that of steady progress rather than headlong rush and that the main outcome of this meeting had been the setting up of the next meeting to be held 11th November and to which various youth professionals had been invited.

Library Nuisance Recent problems caused by young people gathering at the Memorial Library site creating intimidating nuisance and leaving litter and some very expensive damage behind them were highlighted in a letter from a near neighbour. The matter was referred to the amenities Association and to the Police.

Next meeting The next ordinary Council Meeting is scheduled for Monday 17th November at 7.30 at Blackbourne. The public are welcome and have several opportunities to speak throughout the meeting.

Peter Dow
Parish Clerk

What's On in Elmswell ?

To be included in our events diary make sure you send separate notification of your announcement.

November

- 8 Elmswell School PTA Firework night, 6.30pm
- 13 History Group, St John's Church, 7.30pm, Ashley Cooper, Three hundred years of countryside history
- 15 Autumn Fair (St John's Church) at the Blackbourne, 2.00pm
- 29 7.30pm, Entertainment Quiz at The Blackbourne organised by Elmswell Cricket Club - proceeds shared with the Elmswell Community Wood. Contact Doug Reed - Tel 241009.
- 30 Musical - 'Rumours of Angels' - at the Blackbourne, 3.00pm

December

- 11 History Group, St John's Church, 7.30pm, Johnny Stone, A history of hedgerows
- 19 Christmas Disco, 9-13 year olds, The Blackbourne, 7.30-10pm, £3. Tel: 07971 827522

January 2004

- 8 History Group, St John's Church, 7.30pm, Gill Hawkins, The Murder in the Red Barn
- 28, 29, 30 & 31 E.A.D.S. Pantomime Sleeping Beauty, 7.30pm, matinee on

Saturday. The Wesley Methodist Hall, Elmswell. Tickets from PO mid December.

February 2004

- 12 History Group, St John's Church, 7.30pm Peter Driver, Suffolk follies and oddities

March 2004

- 11 History Group, St John's Church, 7.30pm, David Alderton, The industrial heritage of East Anglia

April 2004

- 8 History Group, The Blackbourne, 8pm, Dr Catherine Johns FSA, Late Roman treasure from Suffolk

May 2004

- 13 History Group, St John's Church, 7.30pm, Monica Place, Mary Tudor, French Queen, Duchess of Suffolk.

June 2004

- 10 History Group, St John's Church, 7.30pm, Nick Sign, Education in East Anglia c.1550-c.1700

Tell us more - Tel 241841